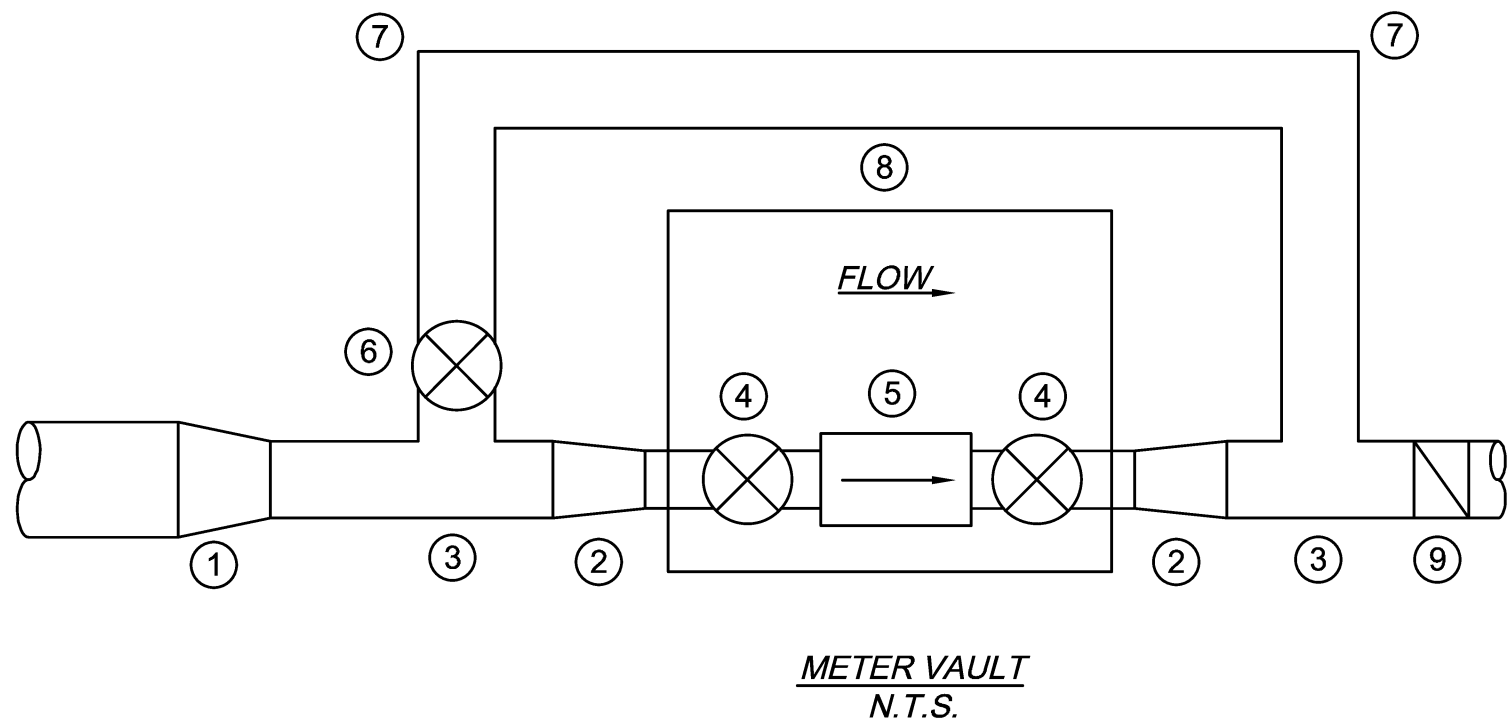
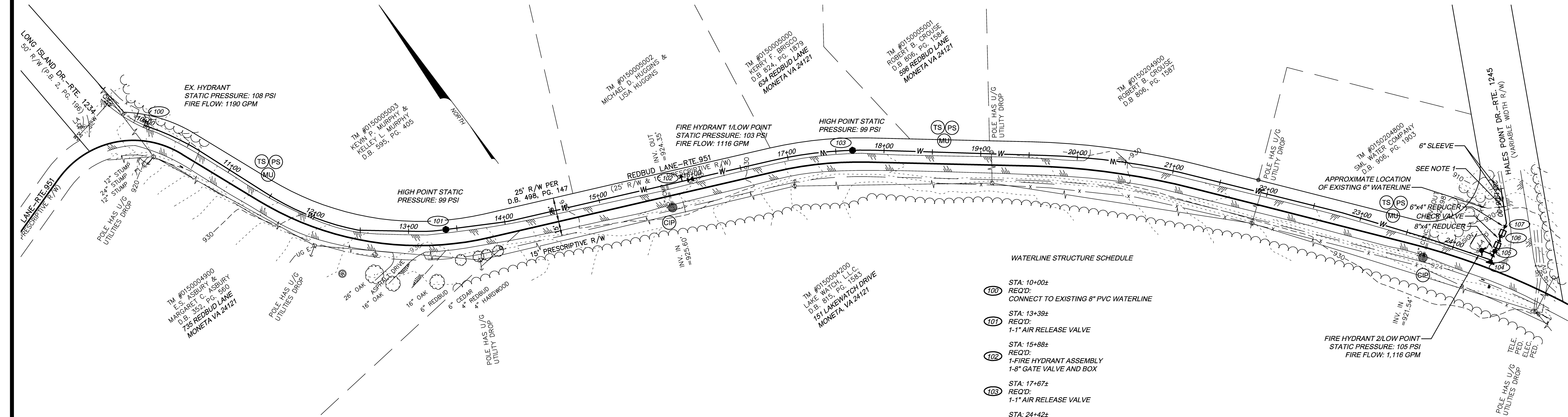


Jul 16, 2014 - 1:16pm V:\LandProjects\20130063\dwg\AsBuilt-Waterline Design.dwg



- ① 6" X 4" REDUCER
- ② 4" X 3" REDUCER
- ③ 4" X 4" TEE
- ④ 3" GATE VALVE WITH HANDWHEEL
- ⑤ 3" SENSUS OMNI C2 METER WITH STRAINER
- ⑥ 4" GATE VALVE AND BOX
- ⑦ 4" 90° BEND
- ⑧ MASTER METER VAULT
SEE DETAIL W-7
- ⑨ 4" CHECK VALVE W/ PRECAST VALVE VAULT

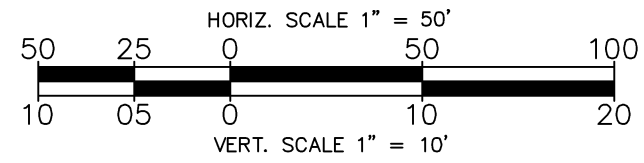
ALL FITTINGS WITH RESTRAINED JOINTS

WATERLINE STRUCTURE SCHEDULE

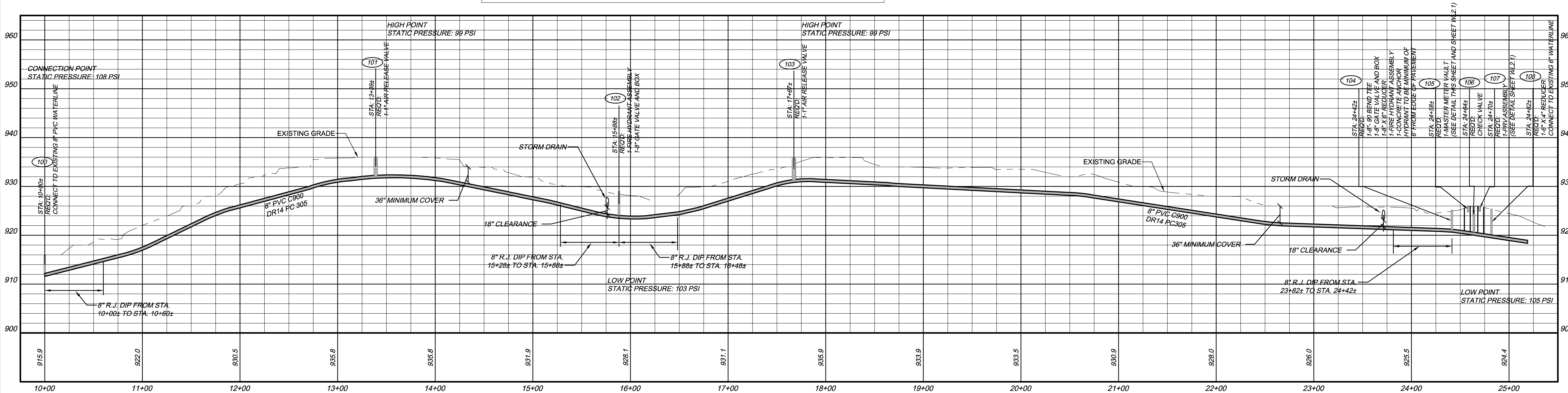
- STA: 10+00±
REQ'D:
CONNECT TO EXISTING 8" PVC WATERLINE
- STA: 13+39±
REQ'D:
1-1" AIR RELEASE VALVE
- STA: 15+88±
REQ'D:
1-FIRE HYDRANT ASSEMBLY
1-8" GATE VALVE AND BOX
- STA: 17+67±
REQ'D:
1-1" AIR RELEASE VALVE
- STA: 24+42±
REQ'D:
1-8" 90 BEND TEE
1-8" GATE VALVE AND BOX
1-8" X 6" REDUCER
1-FIRE HYDRANT ASSEMBLY
1-CONCRETE ANCHOR
HYDRANT TO BE MINIMUM OF
6' FROM EDGE OF PAVEMENT
- STA: 24+58±
REQ'D:
1-MASTER METER VAULT
(SEE DETAIL THIS SHEET AND SHEET WL2.1)
- STA: 24+64±
REQ'D:
CHECK VALVE
- STA: 24+70±
REQ'D:
1-PRV ASSEMBLY
(SEE DETAIL SHEET WL2.1)
- STA: 24+82±
REQ'D:
1-6" X 4" REDUCER
CONNECT TO EXISTING 6" WATERLINE

NOTES:

1. AFTER INSTALLATION OF NEW WATERLINE, DISCONNECT AND PLUG THE BRANCH OF THE EXISTING WATERLINE LEADING TO THE TANK AND ABANDON IN PLACE.
2. EXISTING HALES POINT WATER LINE IS SCHEDULE 40 PVC.



PROFILE INFORMATION TAKEN FROM RECORD DRAWINGS



HALES POINT WATERLINE

3	7/14/14	AS-BUILTS
2	9/5/13	WVWA COMMENTS
1	8/16/13	REVIEW AGENCY COMMENTS

WATERLINE DESIGN-ASBUILT FOR HALES POINT WATER SYSTEM FRANKLIN COUNTY, VIRGINIA

PROJECT NO. 20130063
G.L. NO. 298-04-A1.3
FILE NO. G-13930
DATE: 6/14/13
DRAWN BY: WCH
CHECKED BY: BLC



1973 - 2013
40
YEARS OF
EXCELLENCE

SHEET NO.
WL 1.0

HURT & PROFFITT
2524 LANGHORNE ROAD
LYNCHBURG VA 24501
800.242.4906 TOLL FREE
434.847.7796 MAIN
434.847.0047 FAX
ENGINEERING • SURVEYING • LAND DEVELOPMENT • ENVIRONMENTAL
GEOTECHNICAL • CONSTRUCTION TESTING & INSPECTION • CULTURAL RESOURCES