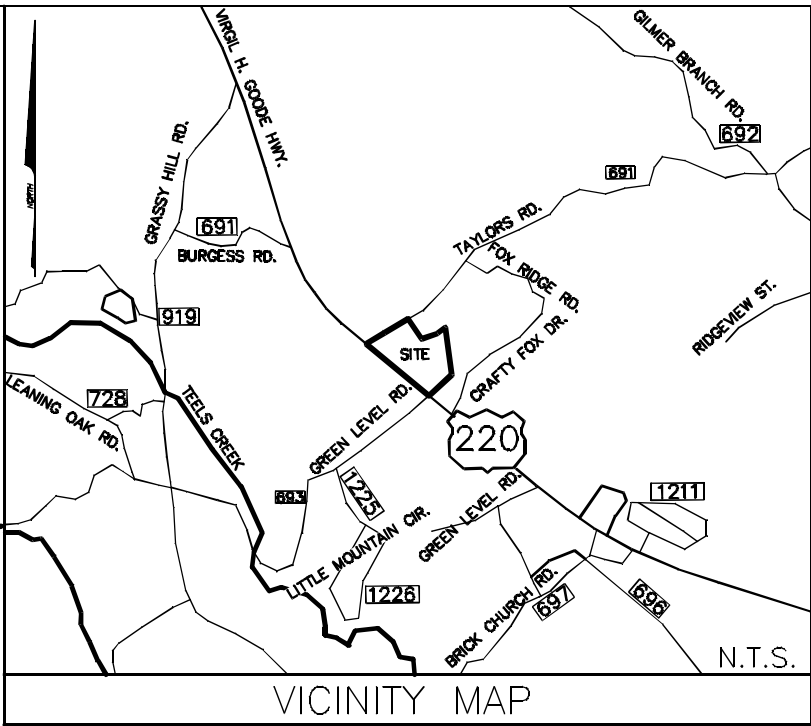


1. THIS PLAT HAS BEEN PREPARED FROM AN ACTUAL FIELD SURVEY AS PER DATE OF THIS PLAT AND THERE ARE NO READILY APPARENT EASEMENTS OR ENCROACHMENTS EXCEPT AS SHOWN.
2. THIS PLAT HAS BEEN PREPARED WITHOUT THE BENEFIT OF A TITLE REPORT AND THEREFORE, DOES NOT NECESSARILY SHOW ALL ENCUMBRANCES ON THE PROPERTY.
3. THE AREA SHOWN HEREON IS NOT LOCATED IN A 100 YEAR FLOOD HAZARD ZONE PER FEMA FLOOD MAP 51067C185C EFFECTIVE 12-16-2008.

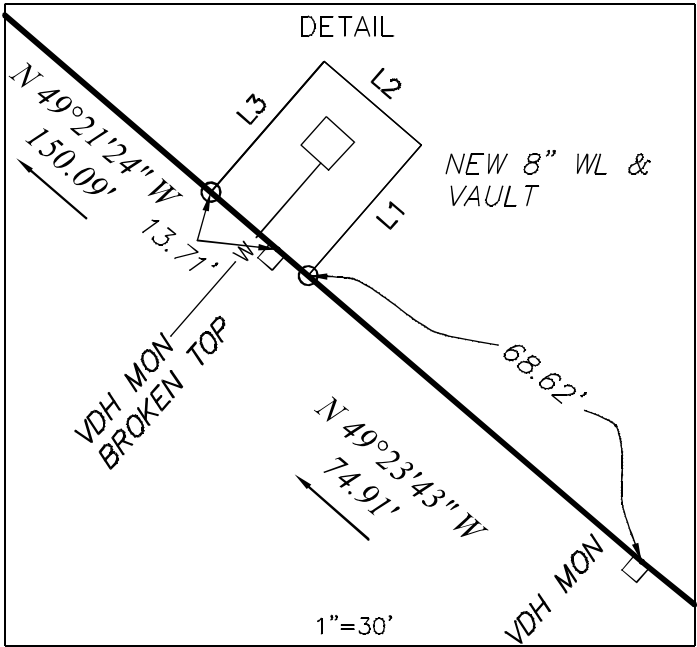


LINE	BEARING	DISTANCE
L1	N 40°56'46" E	27.00'
L2	N 49°22'08" W	20.00'
L3	S 40°56'46" W	27.00'

CURVE	DELTA ANGLE	RADIUS	ARC LENGTH	CHORD BEARING	CHORD LENGTH
C1	17°38'59"	693.02'	213.48'	N 70°07'58" E	212.64'

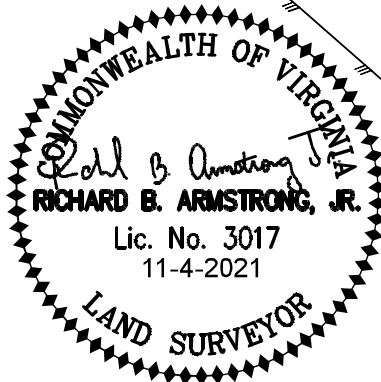
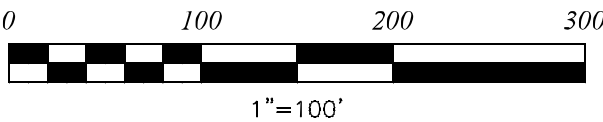
AYERS PROPERTIES, LLC.
DB 932 PG 698
DB 932 PG 704 (MAP)
TAX #0370004000

NEW PUBLIC UTILITY EASEMENT
FOR WATERLINE & VAULT
SEE DETAIL



LEGEND

- HIGHWAY MONUMENT
- COMPUTED POINT
- /// EDGE OF PAVEMENT



ARMSTRONGANDASSOCIATES.NET
ARMSTRONGLANDSURVEYING@GMAIL.COM

DRAWN BY: JBT DATE: 11-4-2021 PROJECT #200119

PLAT SHOWING
NEW PUBLIC UTILITY EASEMENT FOR
AYERS PROPERTIES, LLC.
FRANKLIN COUNTY, VIRGINIA