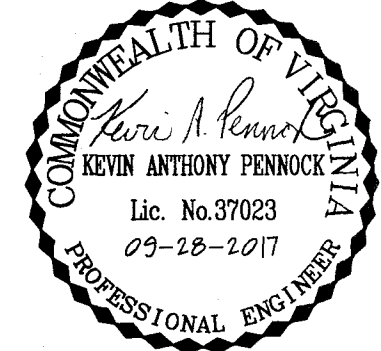
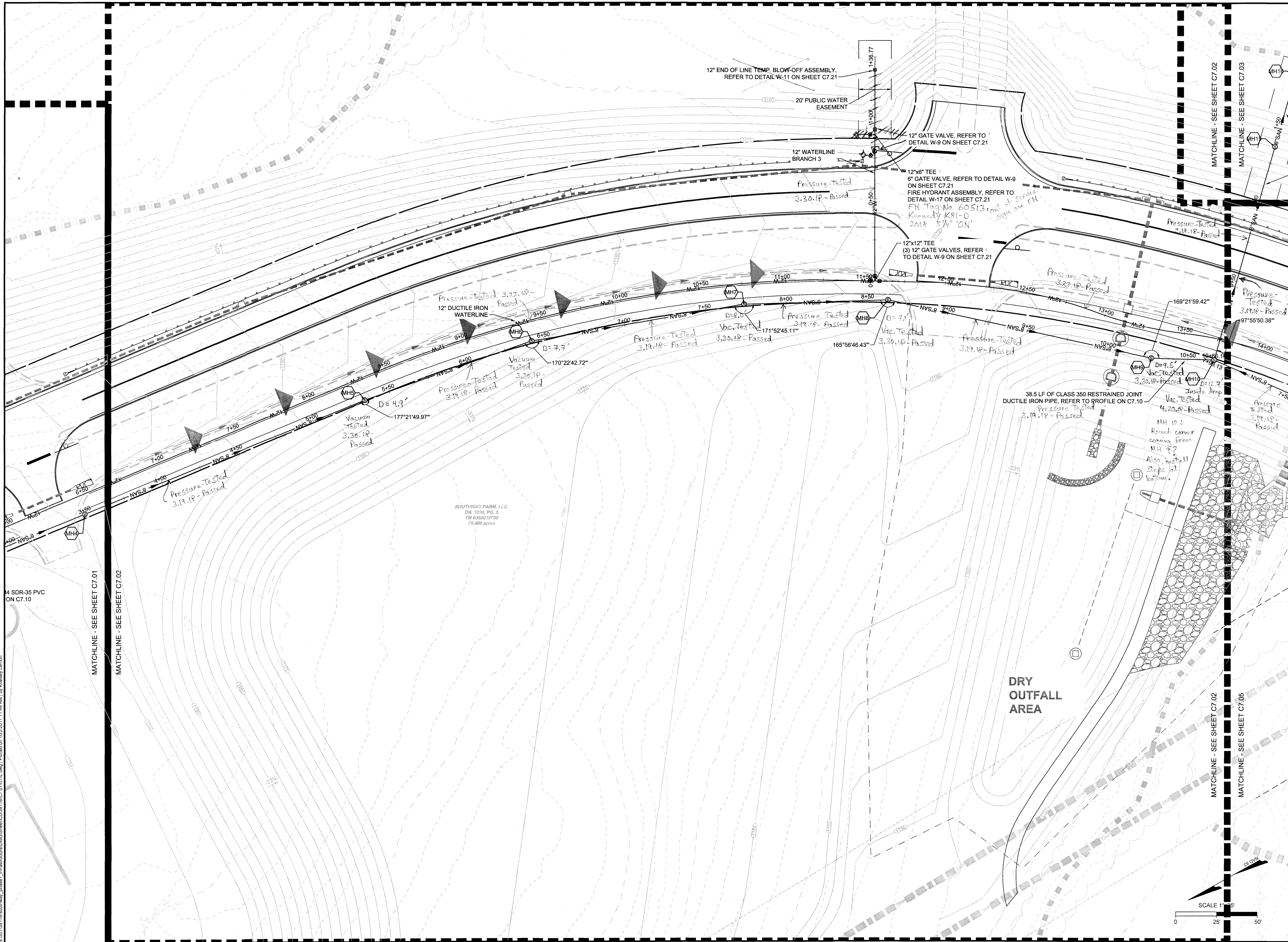


s:\03\130715-southway\_phase1\_infrastructure\DWG\Sheet\CD\9175-C7-01-JUTL.dwg | Printed on: 10/2/2017 11:49 AM | by: Kristine Lemon



THIS DRAWING PREPARED AT THE	
CORPORATE OFFICE	
1001 Boulders Parkway, Suite 300   Richmond, VA 23225	
TEL 804.200.6500 FAX 804.500.1016 www.timmons.com	
YOUR VISION ACHIEVED THROUGH OURS.	
DATE	07/14/2017
ISSUE FOR BID	
07/14/2017	ADDENDUM NO. 3
08/04/2017	ADDENDUM NO. 4
08/09/2017	ADDENDUM NO. 4
08/21/2017	ADDENDUM NO. 8
09/15/2017	REVISIONS PER VDOT COMMENTS
09/28/2017	REVISIONS PER COUNTY FOR BORROW AREA

DRAWN BY	D.O.
DESIGNED BY	R.S.
CHECKED BY	K.P.
SCALE	1" = 25'

**TIMMONS GROUP**

SUMMIT VIEW BUSINESS PARK PHASE 1

FRANKLIN COUNTY, VA

WATER & SEWER PLAN

JOB NO. 39176

SHEET NO. C7.02

These plans and associated documents are the exclusive property of TIMMONS GROUP and may not be reproduced in whole or in part and shall not be used for any purpose whatsoever, inclusive, but not limited to construction, bidding, and/or construction staking without the express written consent of TIMMONS GROUP.