

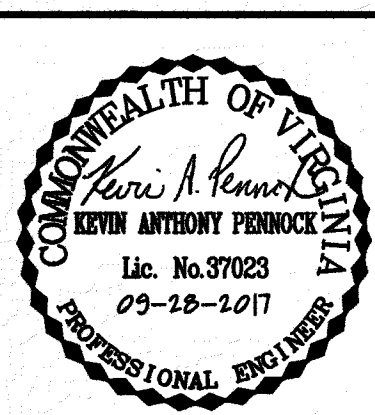
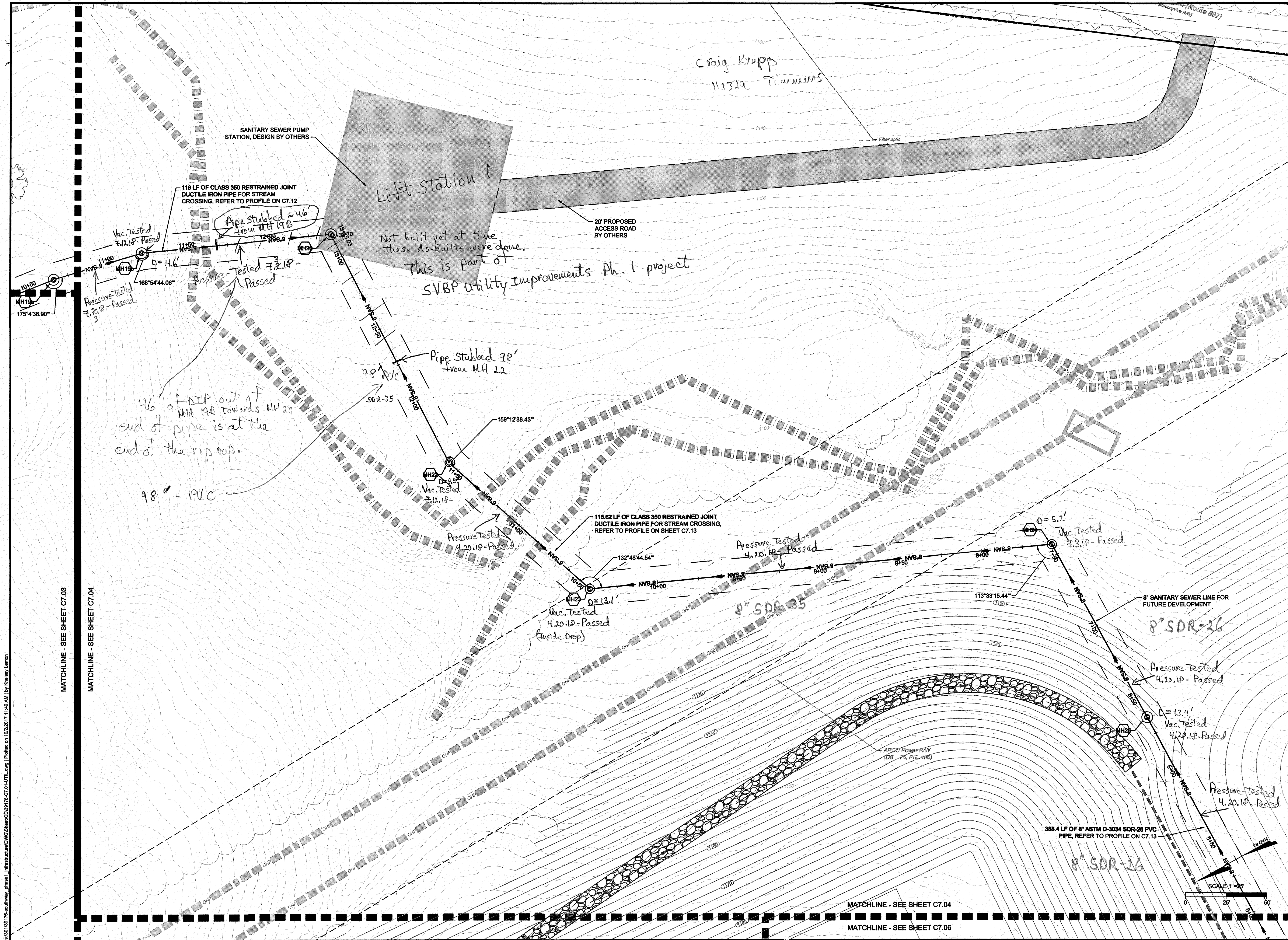
s:\30139176-southway\_phase1\_infrastructure\DWG\Sheet\39176-C7-01-UTL.dwg | Plotted on 10/22/2017 11:49 AM | by Khlesley Lemon

MATCHLINE - SEE SHEET C7.03

MATCHLINE - SEE SHEET C7.04

MATCHLINE - SEE SHEET C7.04

MATCHLINE - SEE SHEET C7.06



THIS DRAWING PREPARED AT THE  
1001 Builders Park  
Suite 300 | Richmond, VA 23225  
TEL 804.200.6500 FAX 804.560.1016 www.timmons.com

YOUR VISION ACHIEVED THROUGH OURS.

DATE		REVISION DESCRIPTION
07/14/2017	08/04/2017	ISSUE FOR BID
08/04/2017	08/04/2017	ADDENDUM NO. 3
08/09/2017	08/09/2017	ADDENDUM NO. 4
08/21/2017	08/21/2017	ADDENDUM NO. 8
09/13/2017	09/13/2017	REVISIONS PER VDOT COMMENTS
09/28/2017	09/28/2017	REVISIONS PER COUNTY FOR BORROW AREA
DATE		
07/14/2017		

DRAWN BY  
D.O.  
DESIGNED BY  
R.S.  
CHECKED BY  
K.P.  
SCALE  
1" = 25'

# TIMMONS GROUP

SUMMIT VIEW BUSINESS PARK PHASE 1  
FRANKLIN COUNTY, VA  
WATER & SEWER PLAN

JOB NO.  
39176  
SHEET NO.  
C7.04

These plans and associated documents are the exclusive property of TIMMONS GROUP and may not be reproduced in whole or in part and shall not be used for any purpose whatsoever, inclusive but not limited to construction, bidding, and/or construction staking without the express written consent of TIMMONS GROUP.