

SUMMIT VIEW BUSINESS PARK PHASE II

NORTH RURAL DEVELOPMENT OVERLAY DISTRICT BOONE MAGISTERIAL DISTRICT FRANKLIN COUNTY, VIRGINIA

SHEET INDEX

COVER SHEET	1
ALIGNMENT & SURVEY DATA SHEET	1A
FUTURE ACCESS ROAD	1B
TYPICAL SECTIONS	2
GENERAL NOTES	2A
ROADSIDE DEVELOPMENT	2B
STORMWATER & BMP NOTES AND DETAIL SHEETS	2C(1) - 2C(10)
EROSION AND SEDIMENT CONTROL NOTES	2D
EROSION AND SEDIMENT CONTROL DETAILS	2E(1) - 2E(2)
EROSION AND SEDIMENT CONTROL SHEETS	2F(1) - 2F(4)
EXCESS MATERIAL FILL AREA - OPTION A (BASE BID)	2F(5) - 2F(19)
EXCESS MATERIAL FILL AREA - OPTION B (ALTERNATE BID)	2F(20) - 2F(21)
DRAINAGE AREA MAP	2G
PAVEMENT MARKING & SIGNING PLAN	2H
SIGN SCHEDULE	2J
MAINTENANCE OF TRAFFIC PLAN	2K
PLAN SHEETS	3, 4
PROFILE SHEETS	3A - 3B, 4A
ENTRANCE PROFILES	4B
SIGHT DISTANCE PROFILES	3C, 4C
STORM SEWER PROFILES	5 - 5A
UTILITY NOTES AND DETAILS	6(1) - 6(2)
WATER & SEWER PLANS AND PROFILES	6(3) - 6(7)
LIGHTING PLANS	7(1)
CONDUIT PLANS	7(2) - 7(3)
LANDSCAPE PLANS	8(1) - 8(5)
WVVA PLANS FOR ACCESS ROAD TO PUMP STATION #2	14
CROSS SECTIONS	XS-1 - XS-28
TOTAL NUMBER OF SHEETS	98

FUNCTIONAL CLASSIFICATION AND TRAFFIC DATA

SUMMIT VIEW PHASE 2
GS-7 URBAN COLLECTOR STREET - 35 MPH MINIMUM DESIGN
SPEED (35 MPH POSTED SPEED)
2016 ADT = N/A
2036: ADT = 9,700, T(%) = 10%

FUNCTIONAL CLASSIFICATION AND TRAFFIC DATA

VIRGIL H GOODE HIGHWAY (ROUTE 220)
GS-5 URBAN PRINCIPAL ARTERIAL STREET - 60 MPH MINIMUM
DESIGN SPEED (55 MPH POSTED SPEED)
2016 ADT = 24,000
2036: ADT = 29,000, T(%) = 12%

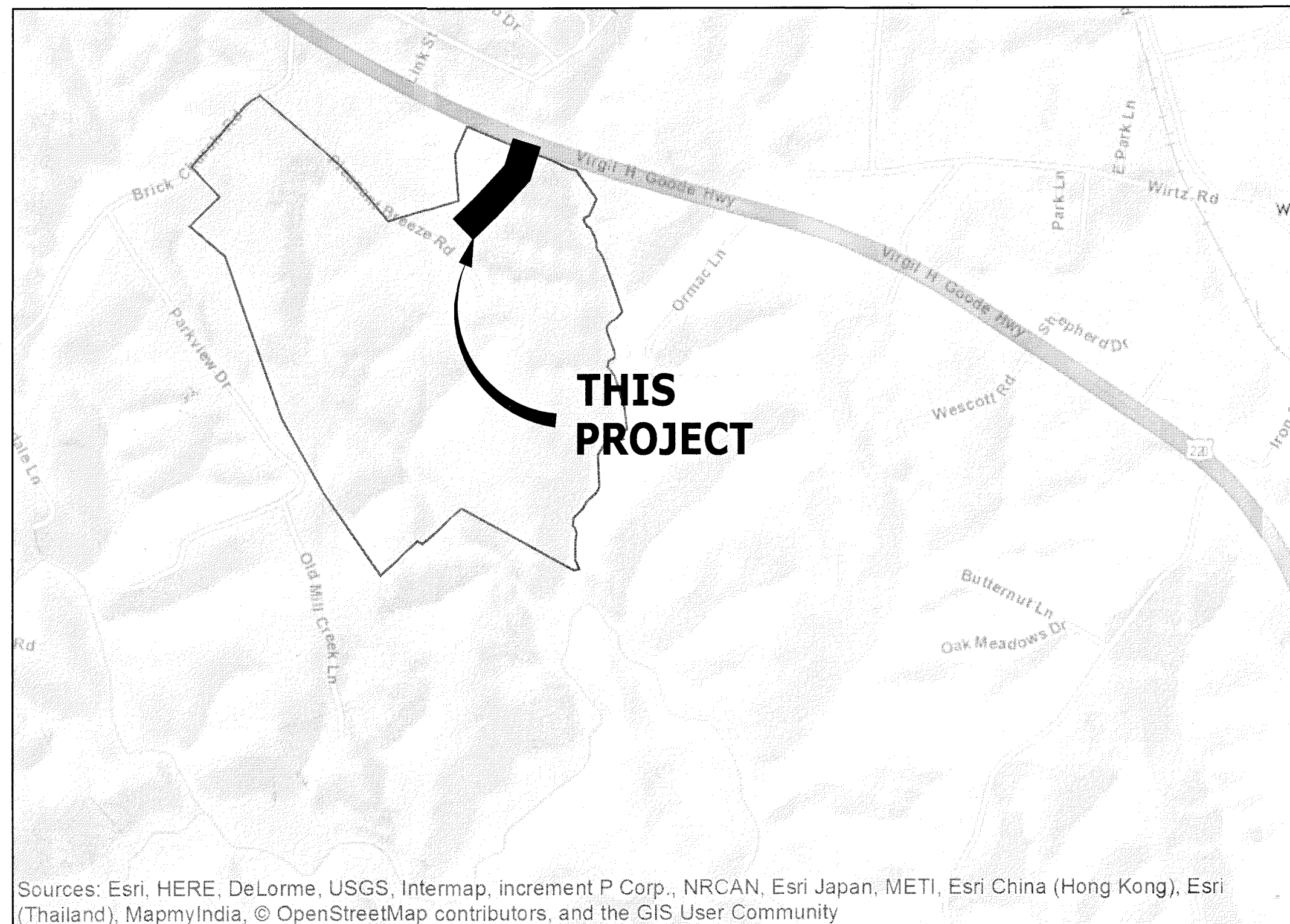
SEE PLAN AND PROFILE SHEETS FOR HORIZONTAL AND VERTICAL
CURVE DESIGN SPEED.

All curves are to be superelevated, transitioned and widened in accordance with
VDOT Standards TC-5.11ULS, except where otherwise noted.

This project is to be constructed in accordance with the Department's 2016 Road and
Bridge Specifications, 2016 Road and Bridge Standards (Including Updates), 2009
MUTCD, 2011 Virginia Supplement to the MUTCD, 2011 Virginia Work Area Protection
Manual, Revision 1, and as amended by the contract provisions and the complete
electronic PDF version of the plan assembly.

REVISIONS

DATE	SHEET NUMBERS	DATE	SHEET NUMBERS
06/13/18	ALL SHEETS		
08/29/18	ALL SHEETS		
10/3/18	ALL SHEETS		



Sources: Esri, HERE, DeLorme, USGS, Intermap, increment P Corp., NRCAN, Esri Japan, METI, Esri China (Hong Kong), Esri
(Thailand), MapmyIndia, © OpenStreetMap contributors, and the GIS User Community

VICINITY MAP

SCALE: 1" = 1,000'

OWNER

COUNTY ECONOMIC DEVELOPMENT
1255 FRANKLIN STREET, SUITE 112
ROCKY MOUNT, VA 24151
CONTACT: MICHAEL BURNETTE
PHONE: (540) 483-3030
E-MAIL: michael.burnette@franklincountyva.gov

ENGINEER

TIMMONS GROUP
1001 BOULDERS PARKWAY, SUITE 300
RICHMOND, VIRGINIA 23225
CONTACT: CRAIG KRUPP
PHONE: (804)200-6378
E-MAIL: craig.krupp@timmons.com

SITE LOCATION INFORMATION

LATITUDE AND LONGITUDE

37°04'26.21"N, 79°54'28.97"W

FEMA PANEL NUMBER & EFFECTIVE DATE

51067C0185C - UNINCORPORATED AREA
DECEMBER 16, 2008

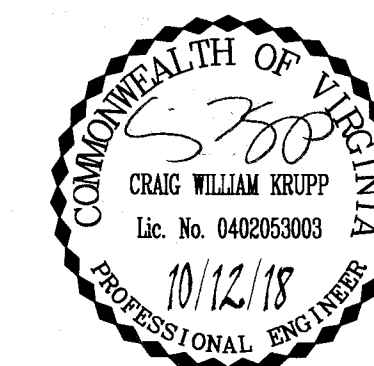
NAME OF RECEIVING

CHANNELWATERS

BLACKWATER RIVER - MADCAP CREEK

VAHU6 & HUC12

RU22 & 030101010503



THIS DRAWING PREPARED AT THE
CORPORATE OFFICE
1001 Boulders Parkway, Suite 300 | Richmond, VA 23225
TEL 804.200.6300 FAX 804.560.1016 www.timmons.com

YOUR VISION ACHIEVED THROUGH OURS.

Site Development | Residential | Infrastructure | Technology

DATE	REVISION DESCRIPTION
06/13/18	PER COUNTY AND VDOT COMMENTS
08/29/18	PER COUNTY AND VDOT COMMENTS
03/30/18	

DRAWN BY
MRF
DESIGNED BY
CWK
CHECKED BY
CMK
SCALE
N/A

CONSTRUCTION PLANS 10/12/18

MOT ACCREDITATION: ANYONE SUBMITTING A MAINTENANCE OF TRAFFIC PLAN
SHALL ALSO SUBMIT THE ACCREDITATION NUMBER FOR TAKING THE VDOT
ADVANCED TRAFFIC CONTROL TRAINING.
- MELVIN FLEMING: # 032715028 (EXP. 03/31/2019)

QUALITY ASSURANCE STATEMENT

A Quality Control and Assurance review has been performed on this document
in accordance with the Timmons Group Quality Plan. The undersigned states that
this document has been checked and reviewed in a manner commensurate with
the level of detail for the type of submittal indicated below.

Project Manager: S. Krupp Date: 10/12/18
CONSTRUCTION PLANS
Type of Submittal

DISTURBED AREA: 33.84 ACRES (1,474,005 SF)
NEW IMPERVIOUS AREA: 2.86 ACRES (124592.1 SF)
TOTAL PROJECT AREA: 34.04 ACRES (1,482,565 SF)

Water and Sewer
installed by Jack S. Clair
Per FR and Contractor Red line
Water Materials
12" and 6" DI US Pipe
Water gate Dabos American Flow Control
Sewer Materials
8" & 6" SDR-26 National Pipe
Manholes CP+P

APPROVED
Franklin County
Planning & Zoning

by: _____
date: _____

APPROVED
Franklin County
Planning & Community Development
Stormwater Management
Signature: Ronald Wilson
Date: 10-16-18

Responsible Land Disturber Certificate:

RLD # _____

Name _____

STANDARD FRANKLIN COUNTY CONSTRUCTION NOTES

1. FRANKLIN COUNTY CASE #15529.
2. THE FRANKLIN COUNTY DEPARTMENT OF PLANNING AND COMMUNITY DEVELOPMENT MUST BE NOTIFIED IN WRITING FIVE (5) BUSINESS DAYS PRIOR TO COMMENCING WITH CONSTRUCTION TO SCHEDULE A PRE-CONSTRUCTION MEETING. SEE THE SEQUENCE OF CONSTRUCTION FOR DETAILS. FAILURE TO DO SO CONSTITUTES A VIOLATION OF THE APPROVED PLANS.
3. THE REGISTERED LAND DISTURBER (RLD) OR THEIR SITE REPRESENTATIVE WILL BE REQUIRED TO MAINTAIN AND UPDATE THE STORMWATER POLLUTION PREVENTION PLAN (SWPPP) AS NECESSARY. THE SWPPP MUST REMAIN AVAILABLE FOR INSPECTION AT ALL TIMES.
4. THE FRANKLIN COUNTY DEPARTMENT OF PLANNING AND COMMUNITY DEVELOPMENT EROSION AND SEDIMENT CONTROL/STORMWATER MANAGEMENT (ESC/SWM) SITE INSPECTOR MUST BE NOTIFIED IN WRITING FORTY-FOUR (48) HOURS IN ADVANCE OF THE CONSTRUCTION OF ANY CRITICAL COMPONENTS OF ALL ESC/SWM INSTALLATIONS (AND NOTED DATES IN THE SWPPP).
5. FRANKLIN COUNTY DEPARTMENT OF PLANNING AND COMMUNITY DEVELOPMENT RESERVES THE RIGHT TO ALTER THESE PLANS, DURING THE CONSTRUCTION PHASE AND AS FIELD CONDITIONS MAY WARRANT. CHANGES TO THE CONSTRUCTION PLANS MUST HAVE FRANKLIN COUNTY APPROVAL TO THE WORK BEING DONE (AND NOTED CHANGES DATES) WILL BE ADDED TO THE SWPPP.
6. APPROVAL OF THESE PLANS BY FRANKLIN COUNTY DEPARTMENT OF PLANNING AND COMMUNITY DEVELOPMENT IS NOT A REPRESENTATION, GUARANTEE OR WARRANTY OF ANY KIND AND SHALL CREATE NO LIABILITY UPON THE COUNTY, ITS OFFICIALS OR EMPLOYEES.
7. APPROVED PLANS REMAIN VALID FOR THE CURRENT 2014 VIRGINIA DEPARTMENT OF ENVIRONMENTAL QUALITY PERMIT CYCLE ONLY (5 YEAR PERMIT CYCLE).
8. WHERE APPLICABLE, AN AS-BUILT/RECORD PLAN SHALL BE PROVIDED TO THE FRANKLIN COUNTY DEPARTMENT OF PLANNING AND COMMUNITY DEVELOPMENT WITHIN SIXTY (60) DAYS AFTER COMPLETION OF CONSTRUCTION FOR APPROVAL. THE ESC/SWM SURETY (LETTER OF CREDIT, PERFORMANCE BOND, OR ESCROW ACCOUNT) WILL NOT BE FULLY RELEASED UNTIL ALL ITEMS HAVE BEEN APPROVED AS CONSTRUCTED.

RECEIVED OCT 16 2018

Contractor As-Built 10.16.19 K. Winslow

TIMMONS GROUP

SUMMIT VIEW BUSINESS PARK PHASE II

BOONE DISTRICT - FRANKLIN COUNTY - VIRGINIA

COVER SHEET

JOB NO.
41271

SHEET NO.
1