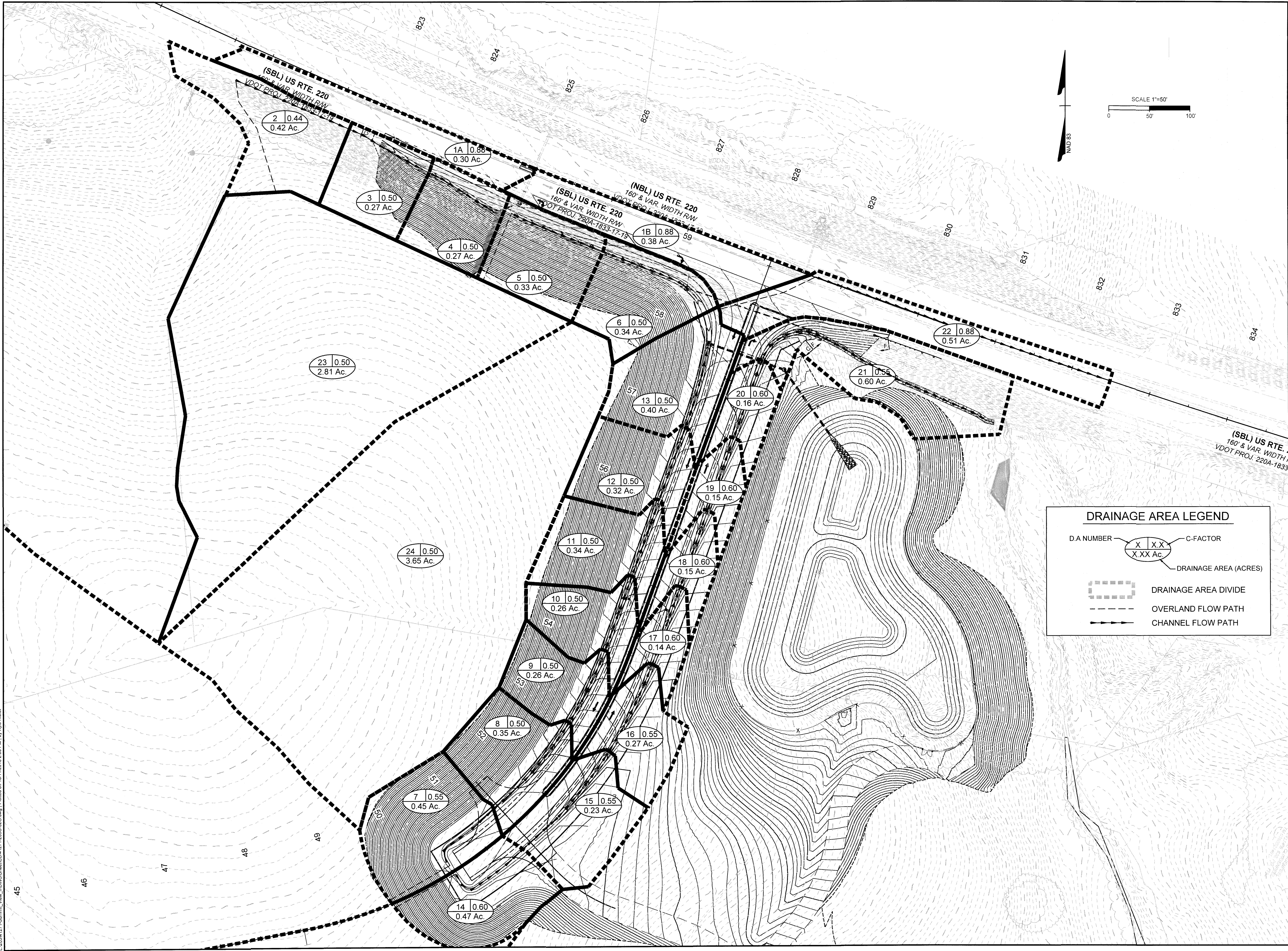


L:\2034\4271-Summit_View_JDWG\Sheet\CD\41271-203C-02G.dwg | Plotted on 10/11/2018 2:30 PM | by Kyle Riblett



DRAINAGE AREA LEGEND

D.A. NUMBER

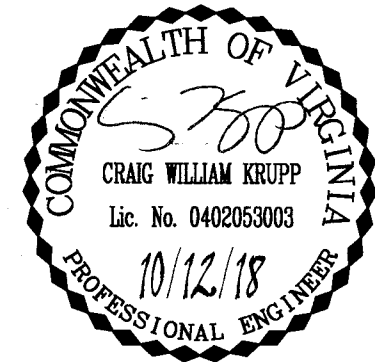
X	X	X
X	XX	Ac.

 C-FACTOR

DRAINAGE AREA DIVIDE

OVERLAND FLOW PATH

CHANNEL FLOW PATH



THIS DRAWING PREPARED AT THE
CORPORATE OFFICE
1001 Builders Parkway, Suite 300 | Richmond, VA 23225
TEL 804-200-6500 FAX 804-560-1016 www.timmons.com

YOUR VISION ACHIEVED THROUGH OURS.

Site Development | **Residential** | **Infrastructure** | **Technology**

DATE	REVISION DESCRIPTION
06/13/18	PER COUNTY AND VDOT COMMENTS
08/29/18	PER COUNTY AND VDOT COMMENTS
10/03/18	PER COUNTY AND VDOT COMMENTS

DRAWN BY: MRF
DESIGNED BY: CWK
CHECKED BY: CMK
SCALE: 1"=50'

TIMMONS GROUP

SUMMIT VIEW BUSINESS PARK PHASE II
BOONE DISTRICT - FRANKLIN COUNTY - VIRGINIA
ACCESS ROAD DRAINAGE AREA MAP

JOB NO.
41271
SHEET NO.
2G

These plans and associated documents are the exclusive property of TIMMONS GROUP and may not be reproduced in whole or in part and shall not be used for any purpose whatsoever, inclusive, but not limited to construction, bidding, and/or construction staking without the express written consent of TIMMONS GROUP.