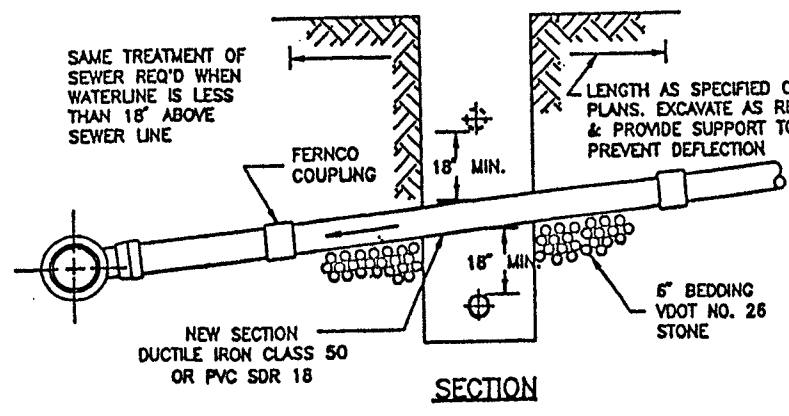
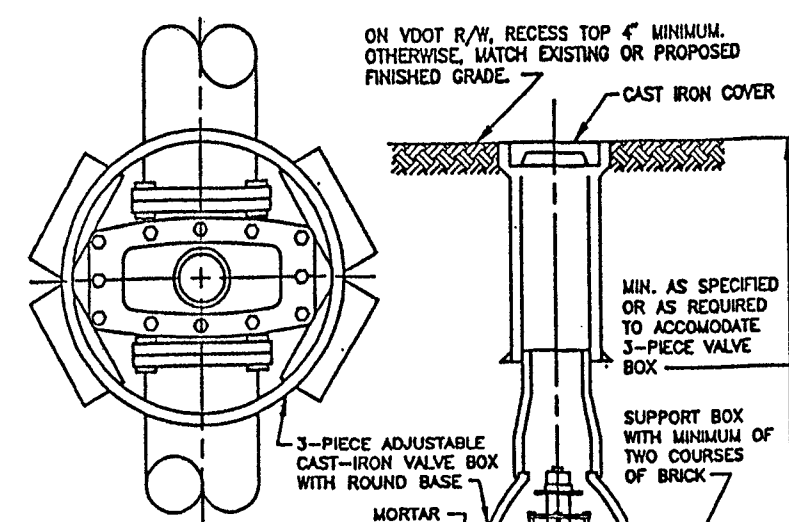


PLAN

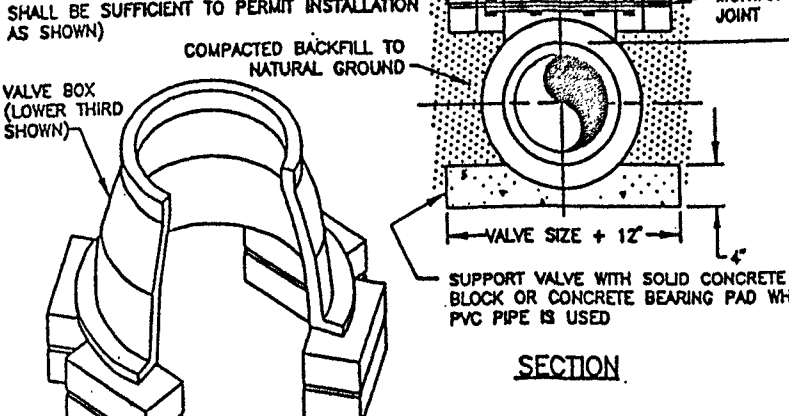


SECTION

WATERLINE - SANITARY SEWER CROSSING



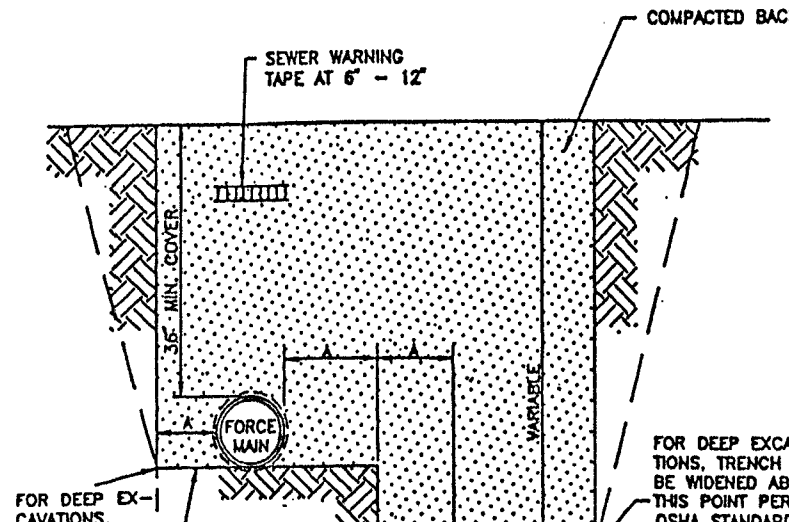
PLAN



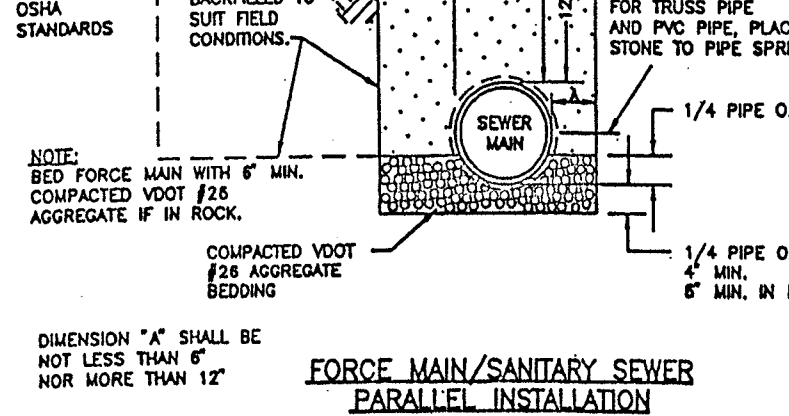
SECTION

VALVE BOX INSTALLATION

ISOMETRIC VIEW

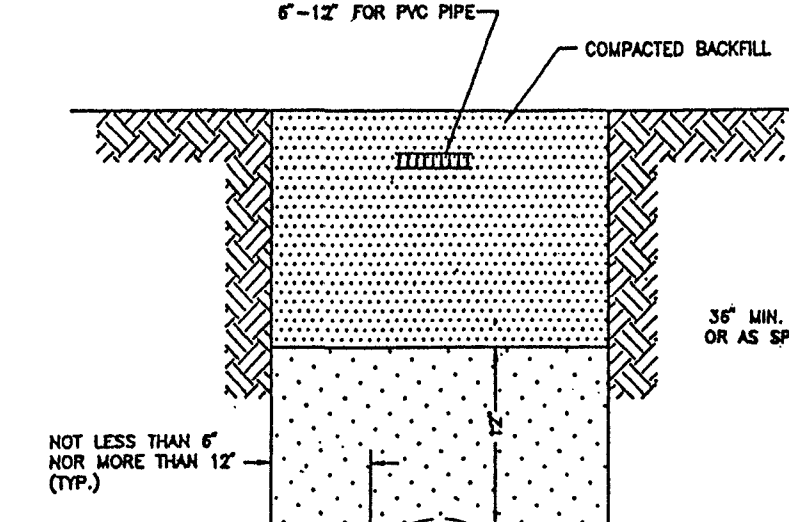


PLAN

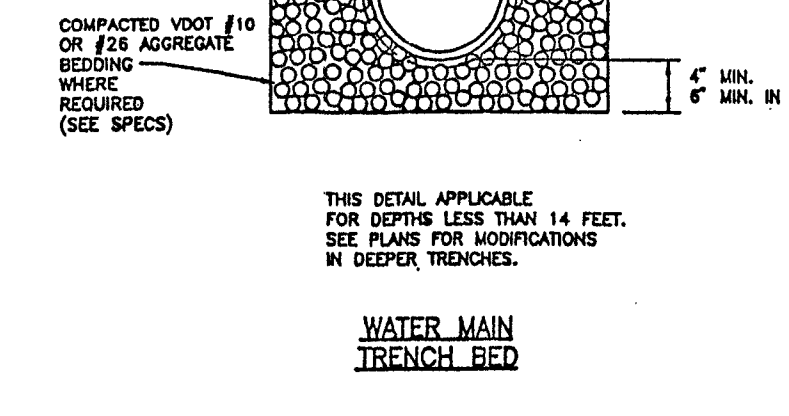


SECTION

FORCE MAIN/SANITARY SEWER PARALLEL INSTALLATION TRENCH BED

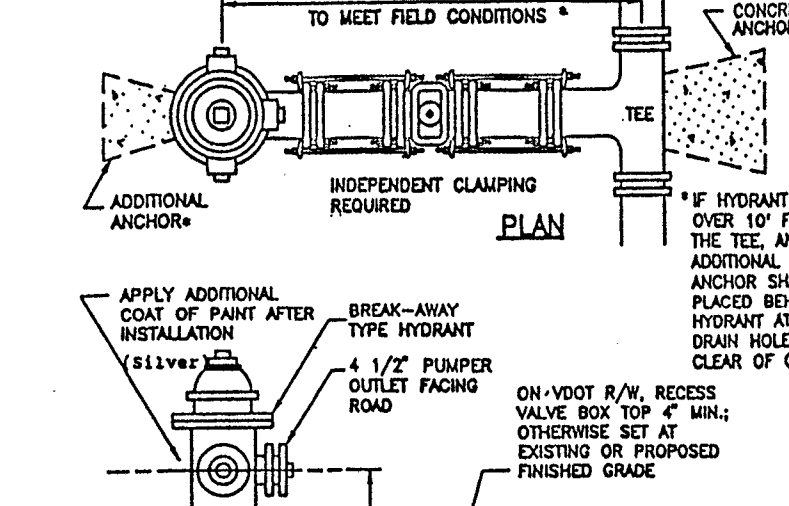


PLAN

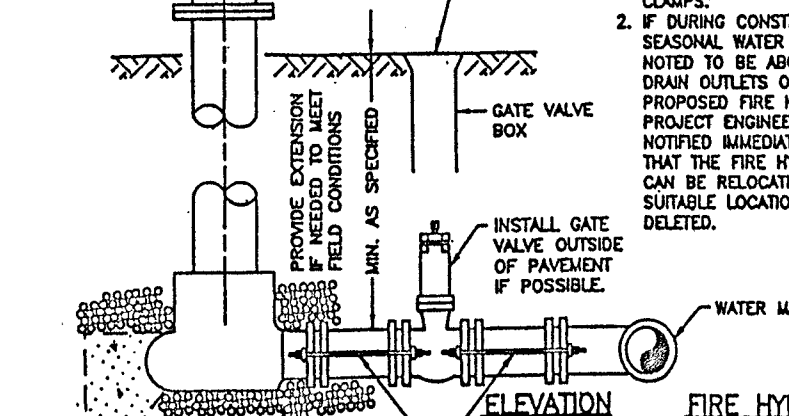


SECTION

WATER MAIN TRENCH BED

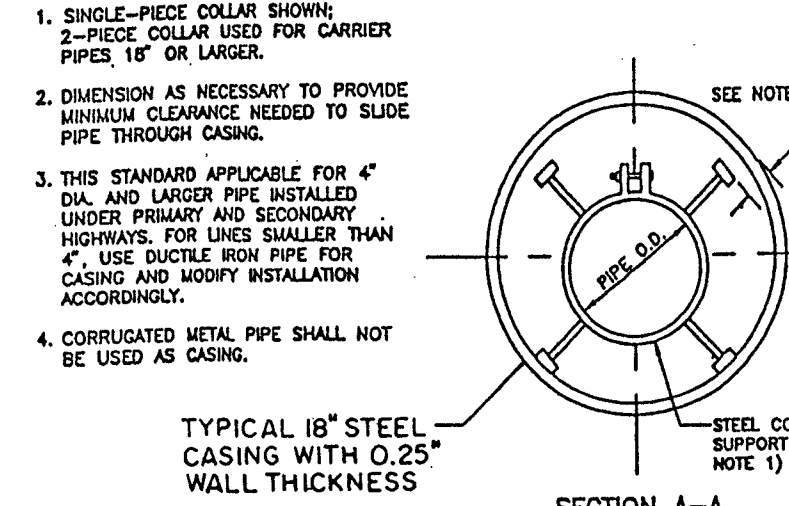


PLAN

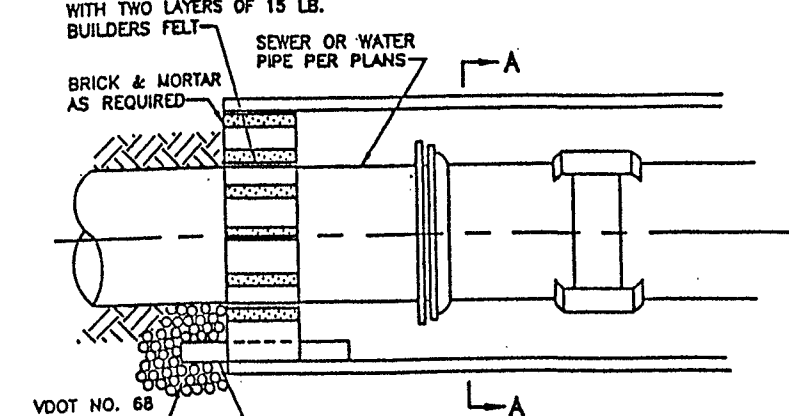


SECTION

FIRE HYDRANT INSTALLATION

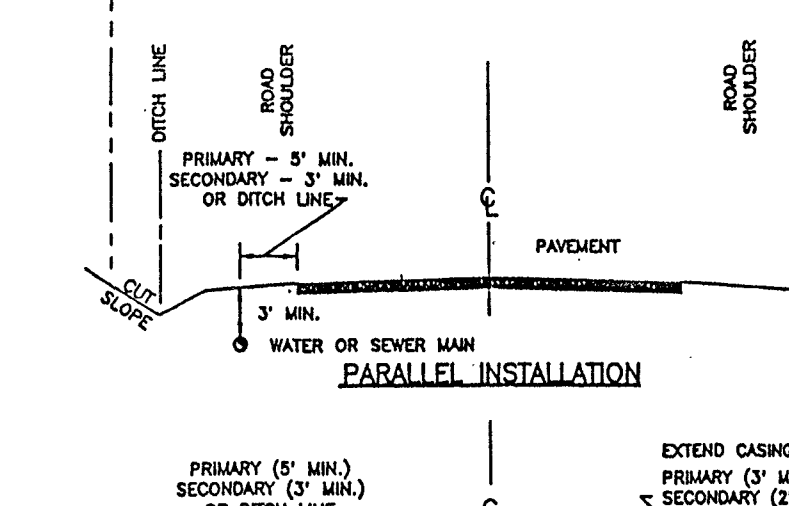


PLAN

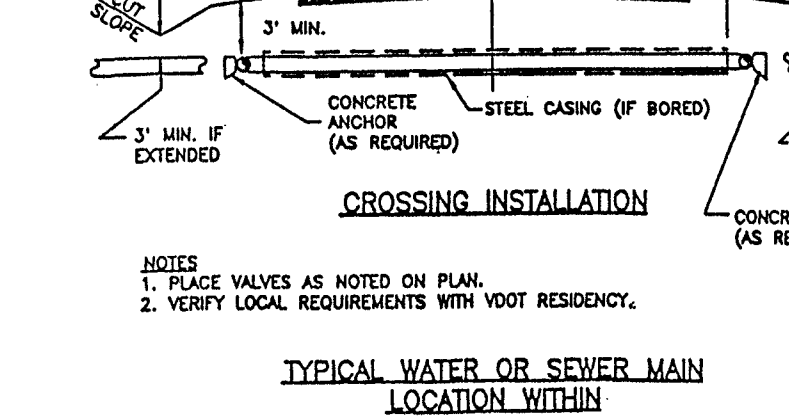


SECTION A-A

TYPICAL 18" STEEL CASING WITH 0.25" WALL THICKNESS

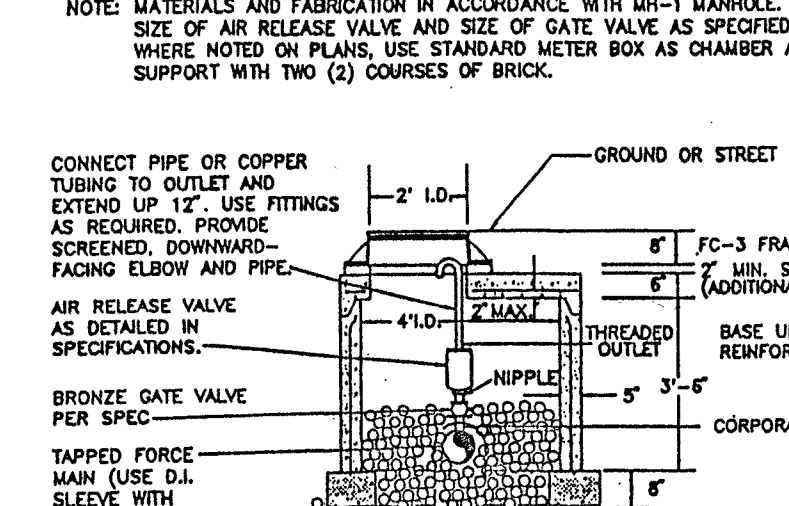


PLAN

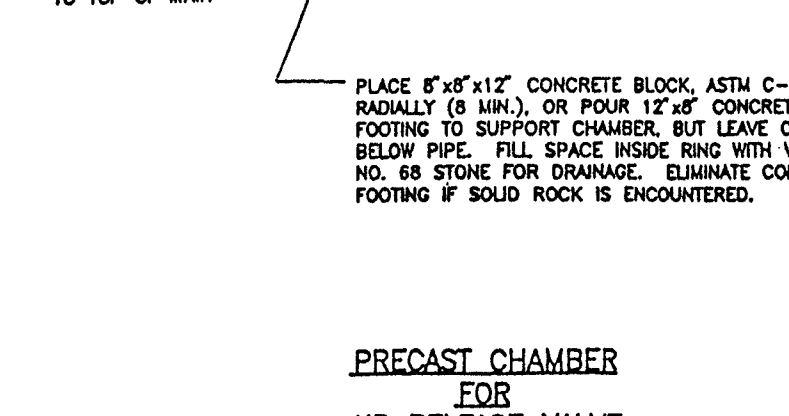


SECTION

TYPICAL WATER OR SEWER MAIN LOCATION WITHIN V-DITCH RIGHT-OF-WAY



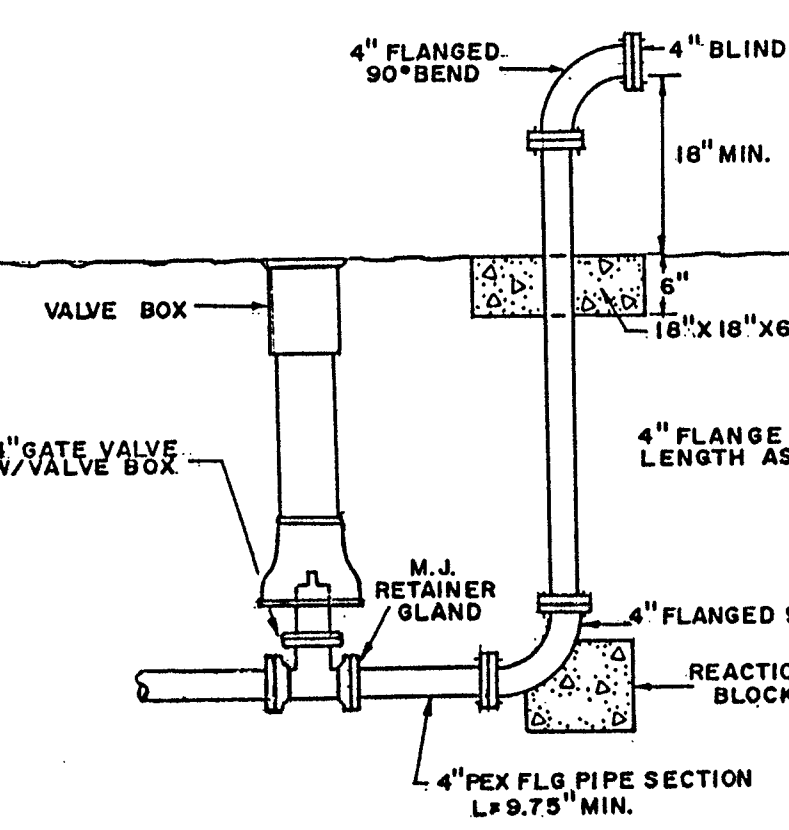
PLAN



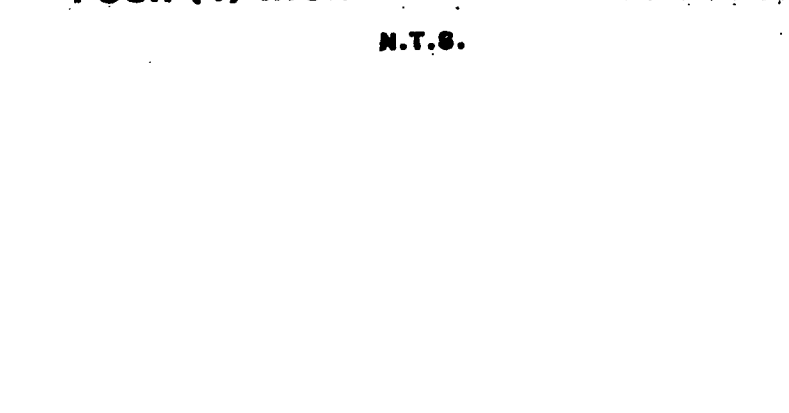
SECTION

PRECAST CHAMBER FOR AIR RELEASE VALVE

THE FIRE HYDRANT IS NOT REQUIRED TO BE INSTALLED AT THIS TIME. CONTRACTOR TO INSTALL PLUG JUST PAST VALVE.



PLAN



SECTION

FOUR (4) INCH BLOW OFF ASSEMBLY

THE FIRE HYDRANT IS NOT REQUIRED TO BE INSTALLED AT THIS TIME. CONTRACTOR TO INSTALL PLUG JUST PAST VALVE.

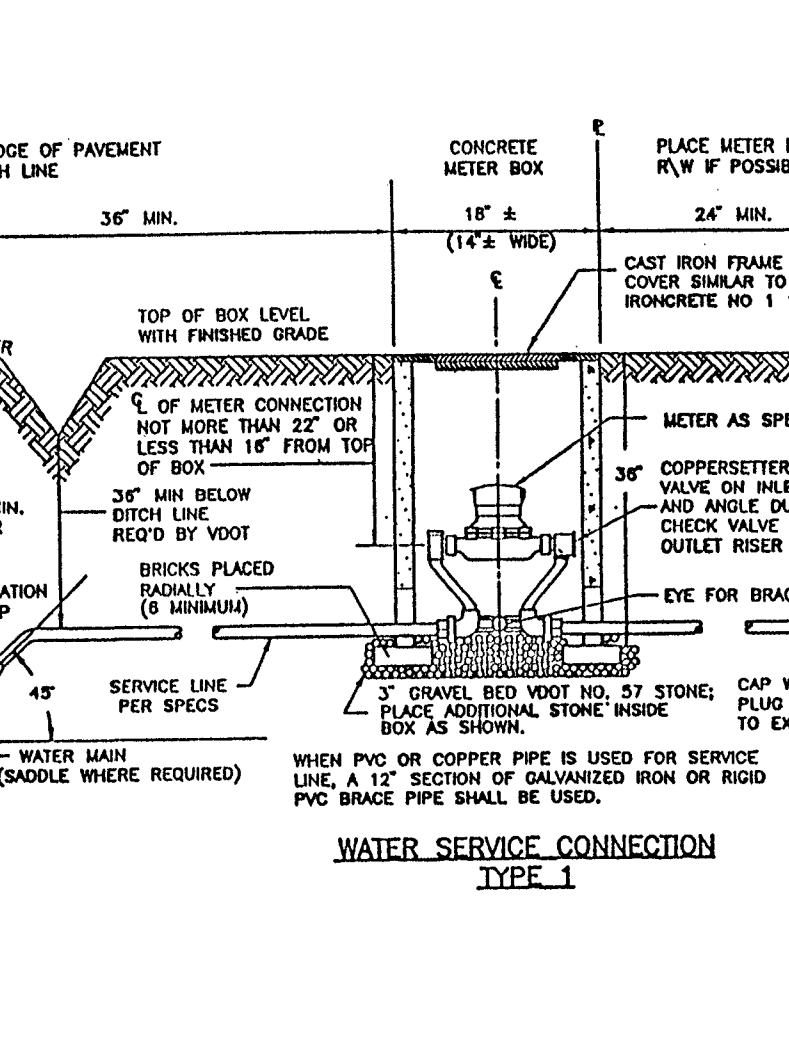


PLAN



SECTION

WATER SERVICE CONNECTION TYPE 1

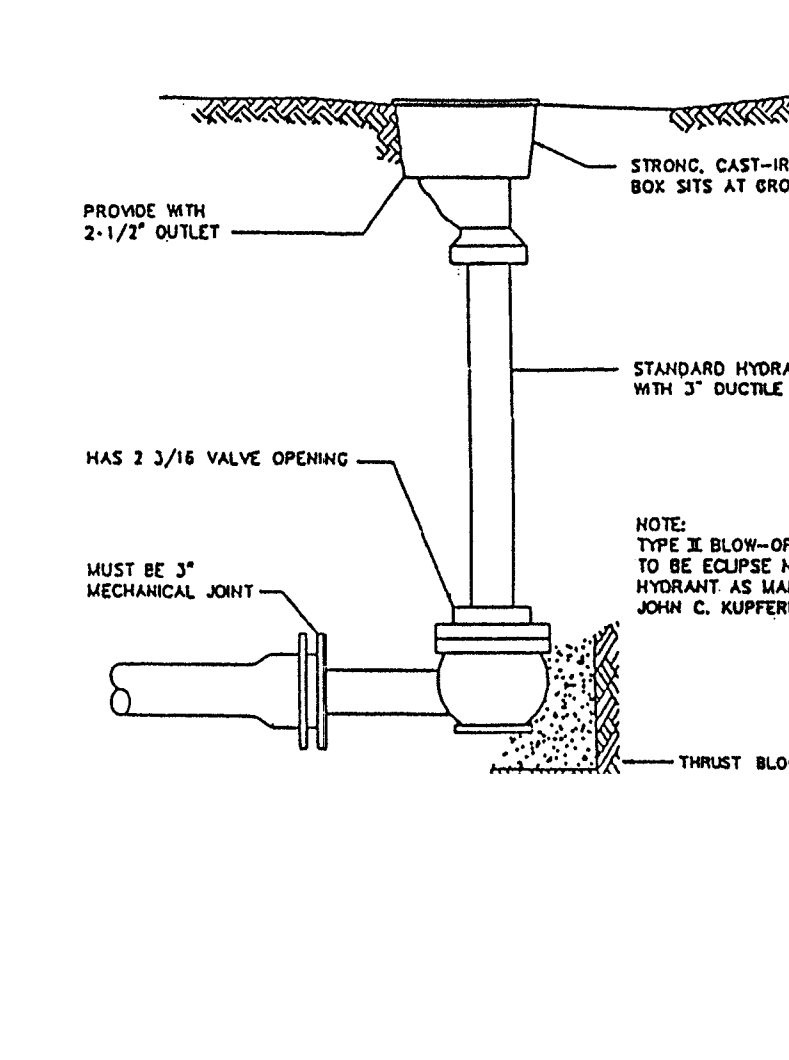


PLAN

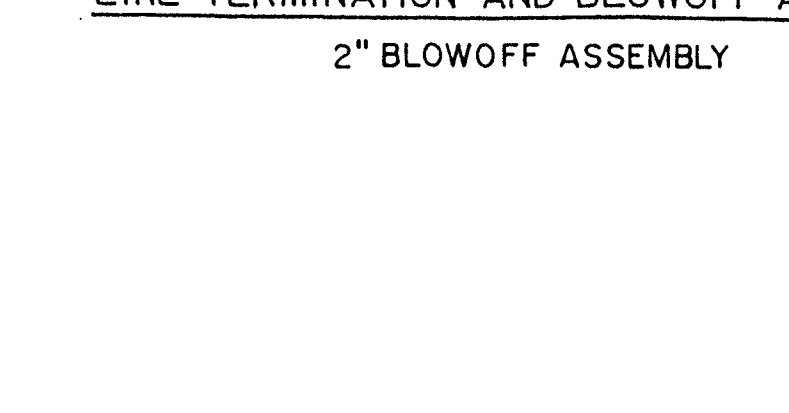


SECTION

WATER SERVICE CONNECTION TYPE 1



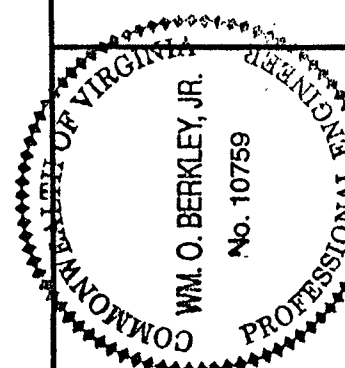
PLAN



SECTION

LINE TERMINATION AND BLOWOFF ASSEMBLY 2" BLOWOFF ASSEMBLY

BERKLEY HOWELL & ASSOC., P.C.
ENGINEERS • SURVEYORS • PLANNERS
306 ENTERPRISE DRIVE, SUITE C
FOREST, VIRGINIA 24551
PH: (434) 395-7548 FAX: (434) 395-6178



THE RETREAT
WATER SYSTEM
UNION HALL DISTRICT FRANKLIN CO., VA.

MISC. DETAILS

DATE: 10-1-02

TECHNICIAN:

CHECKED BY:

REVISIONS

NO.	DATE
1	2-26-03

SCALES AS SHOWN

PROJ. NO. 020097 DIV.

SHEET NO. 14 OF 16

DRAWING NO.

SURVEY DATUM USED:

FIELDBOOK IDENTIFICATION:

VIEWS TO CREATE THIS DRAWING:

MANUSCRIPT DRAWING NUMBER: