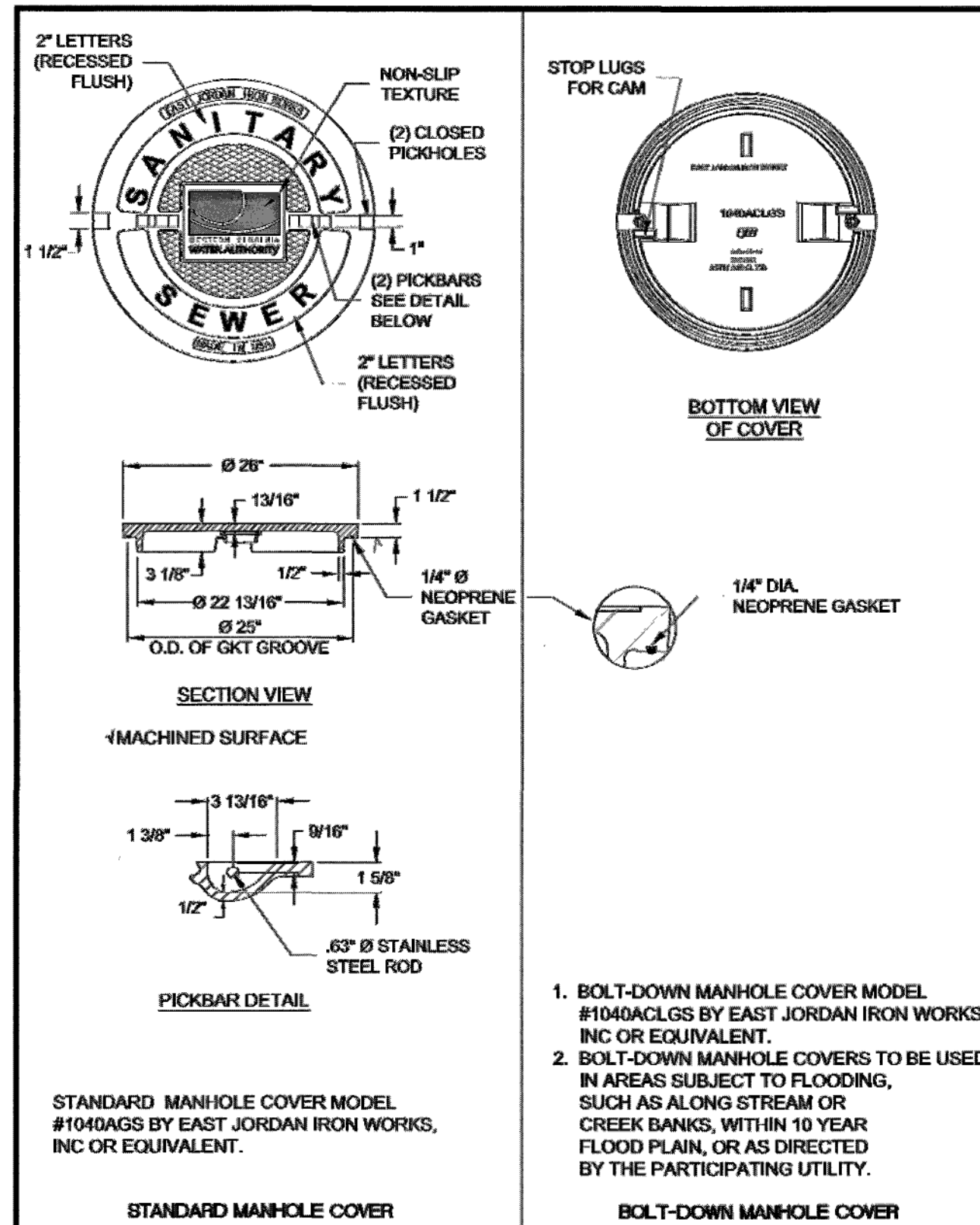
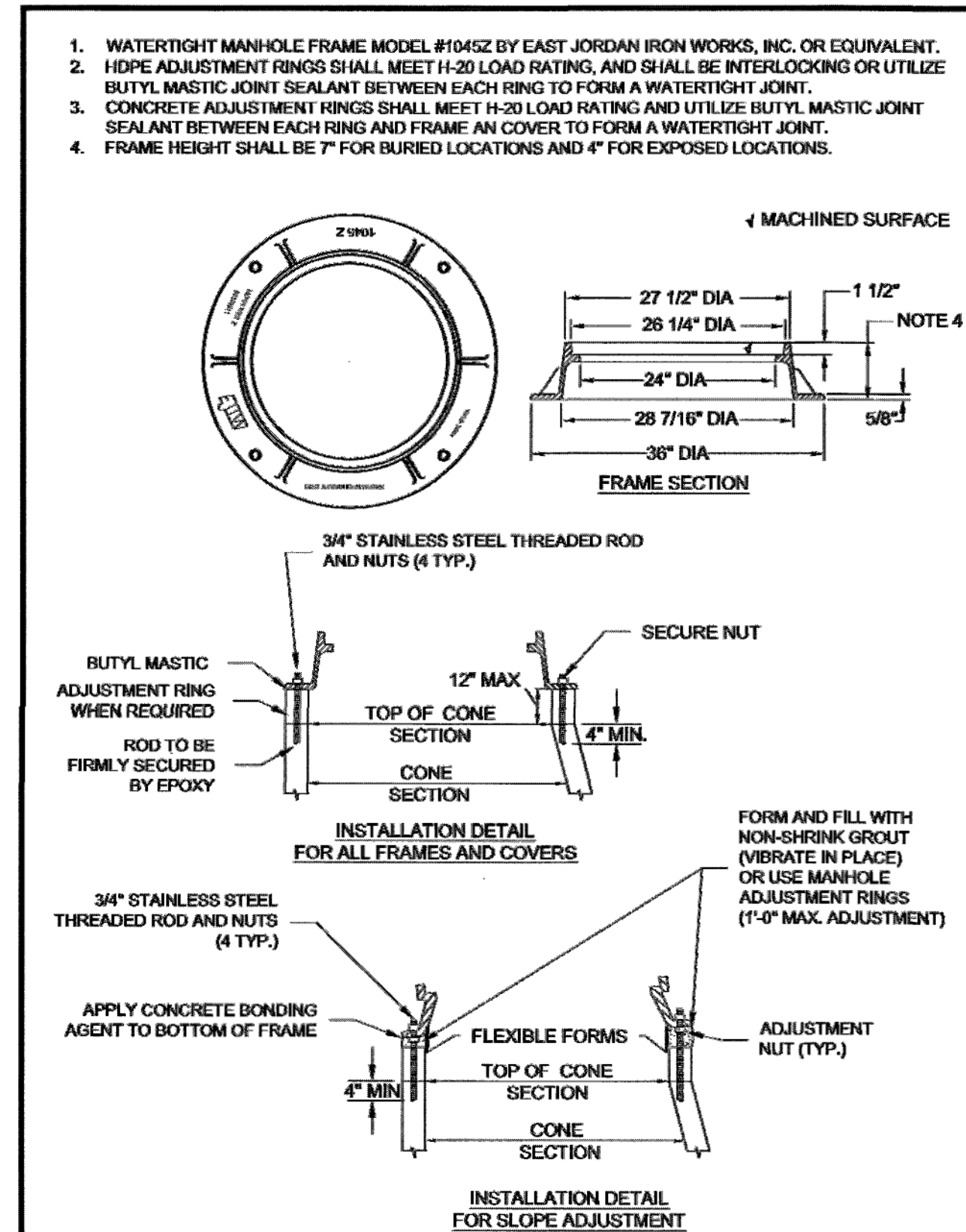


-

S-6



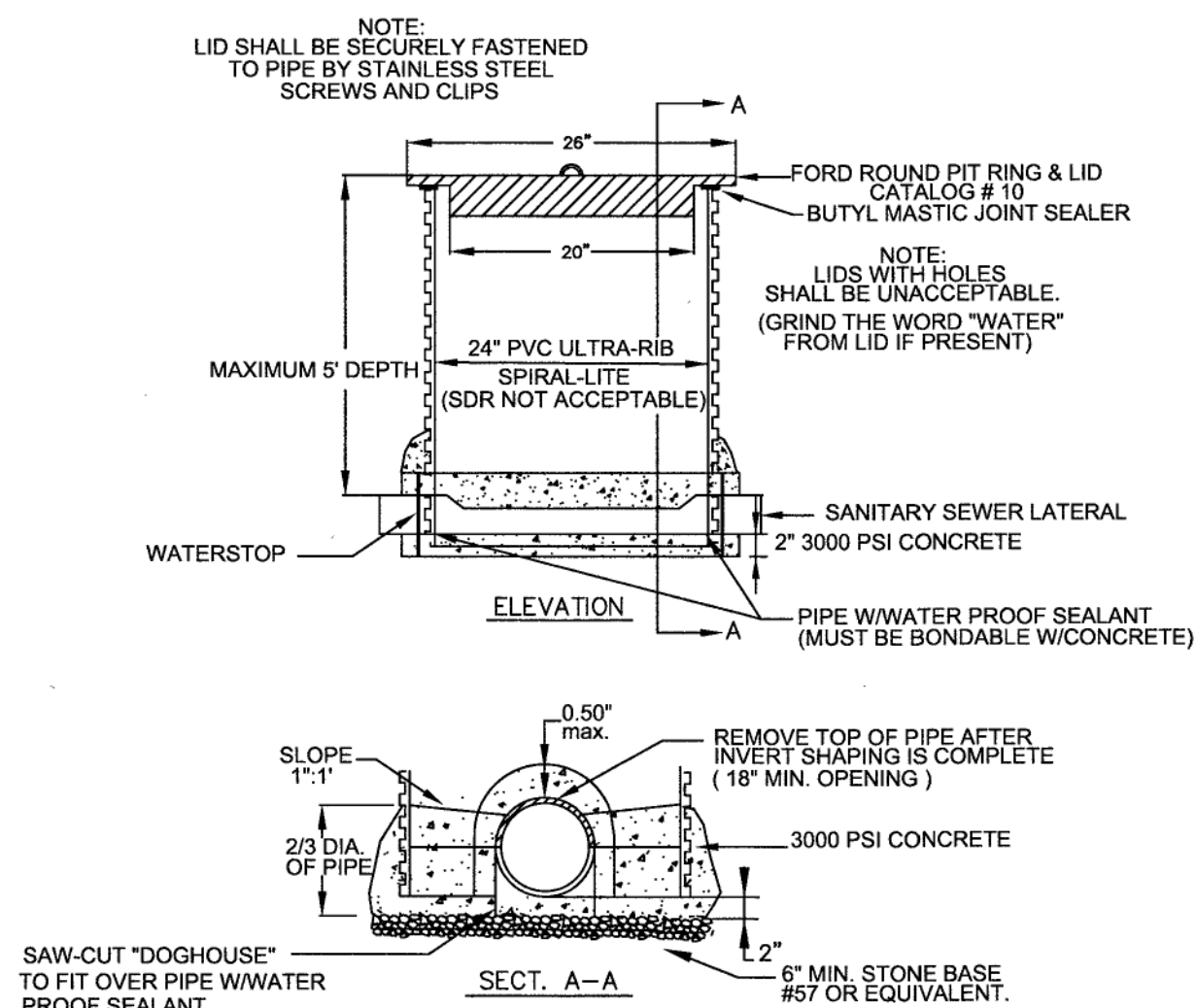
S-5



S-4

-
- ADJUSTMENT RINGS IF NECESSARY
(1" MAX ADJUSTMENT)
SEE FRAME & COVER DETAILS
- BUTYL MASTIC JOINT SEALER OR GASKETS
MEETING ASTM C443 AND ASTM C1244 TESTING
STANDARD (NO MORTAR)
- MINIMUM SLOPE FOR
SERVICE CONNECTION
4"=14" PER 1'-0"
6"=18" PER 1'-0"
- PRECAST HOLE
WITH FLEXIBLE
BOOT & STAINLESS
STEEL BAND
- SERVICE
CONNECTION
- 2'-0"
- ARE REQUIRED)
- ECCENTRIC CONE
HEIGHT VARIES
- 1'-4" Max.
- 4'-0"
- 5" Min.
(Typ.)
- RISER
SECTIONS
HEIGHT VARIES
- BASE
HEIGHT VARIES
- 6" MIN.
- SLOPE BENCH
1/4" PER 1'-0"
- MANHOLE WITH
PRECAST INVERT
- STONE BASE (6" MIN. DEPTH)
#57 OR EQUIVALENT

S-1

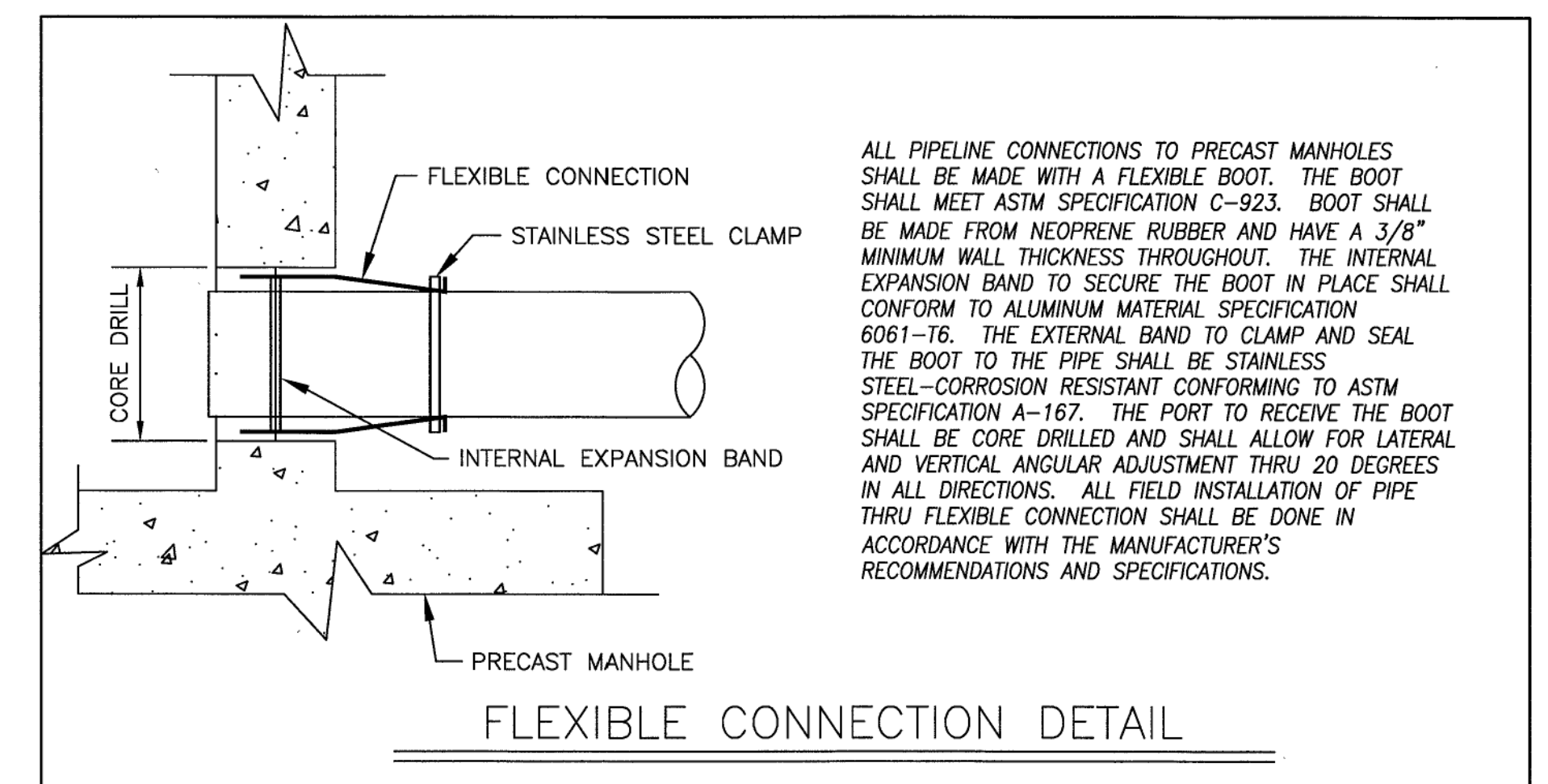


4. 2' DIA. CONCRETE WELL CASING
3000 PSI MAY BE SUBSTITUTED
FOR ULTRA-RIB PIPE. ANY VERT.
JOINTS IN THE CASING PIPE MUST
BE BY BELL & SPIGOT
CONNECTION WITH MASTIC.

S-07

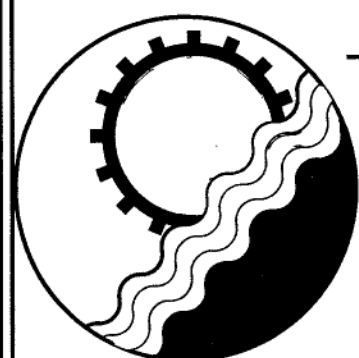
-
- The technical drawings illustrate the dimensions and components of a scum tank. The **ELEVATION** view shows a rectangular tank with a total length divided into two sections: $\frac{2}{3}$ LENGTH and $\frac{1}{3}$ LENGTH. The left section contains an "AIR SCUM VOLUME" and is 1' high. The right section is 1' high and contains a "6\" PVC TEES" and an "8\" pipe vent". The tank is connected to a "4\" MIN. PVC" line on the left and a "4\" MIN. PVC" line on the right. The **PLAN** view shows the tank's footprint with a "VARIABLE" length and a "3' MINIMUM" width. It features three "ACCESS PORT" circles and a "4\" PIPE VENT" on the right side. The drawing is labeled "DRAWING NOT TO SCALE".

01/01/14



-

COMMONWEALTH OF VIRGINIA
 Robert H. Wampler, Jr.
 ROBERT H. WAMPLER, JR.
 Lic. No. 34713
 7/9/94



20 S. ROANOKE ST., PO BOX 619
FINCASTLE, VIRGINIA 24090
540.473.1253 FAX: 540.473.1254

| | | |
|------------------|--|----------------|
| Drawn WWVA | FRIENDSHIP HEALTH AND REHAB CENTER SOUTH | NO SCALE |
| Designed WWVA | | DATE: 7/9/14 |
| Checked WWVA | SANITARY SEWER DETAILS ROANOKE COUNTY, VIRGINIA | PROJECT: 13106 |
| Approved WWVA | | 19 |