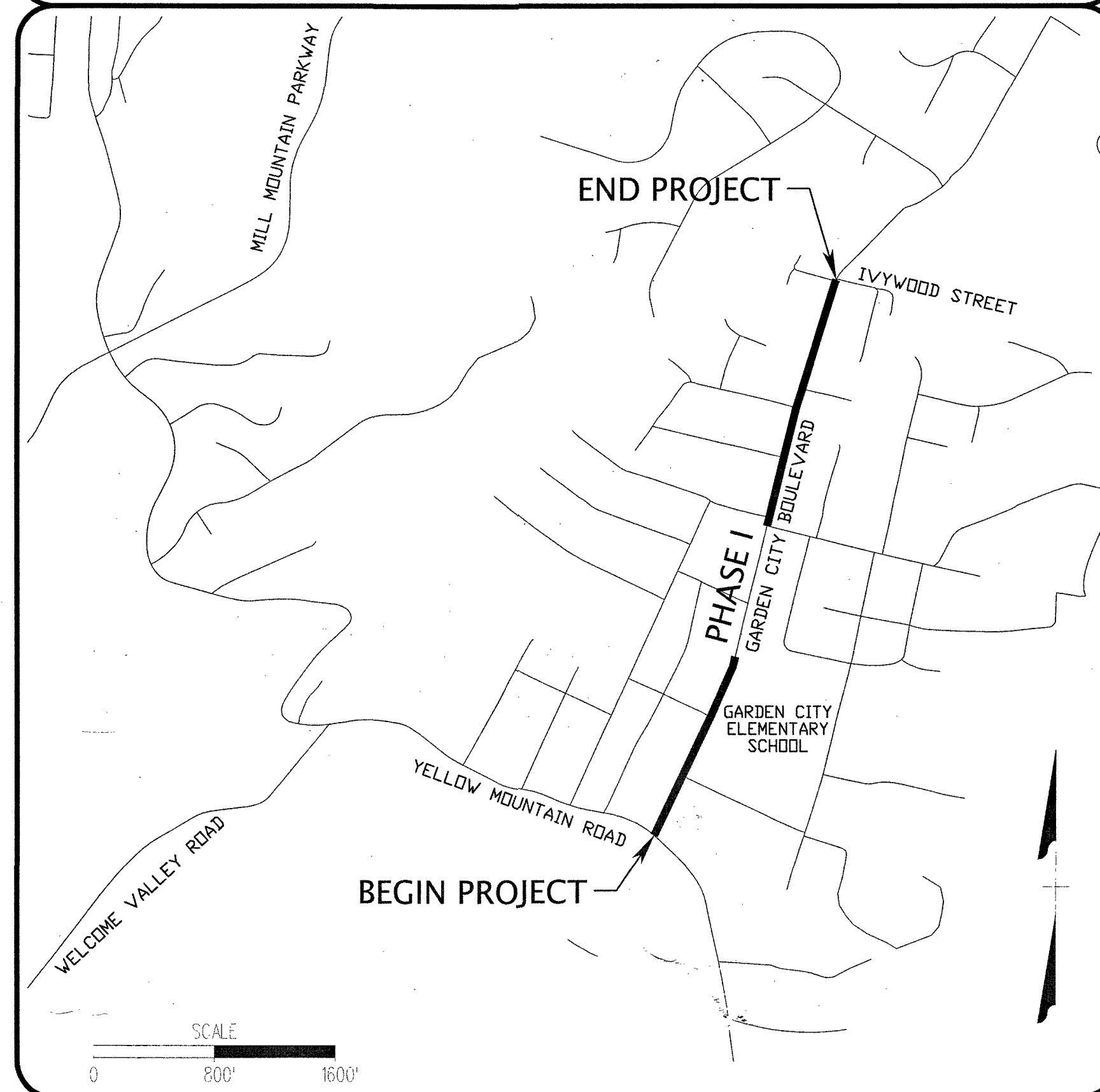


RECEIVED  
FEB 20 2015  
CITY OF ROANOKE  
PLANNING BUILDING & DEVELOPMENT

## PROJECT LOCATION MAP



NOTICE: ALL LANDOWNERS, DEVELOPERS AND CONTRACTORS

FAILURE TO COMPLY WITH THE CONSTRUCTION PROCEDURE REQUIREMENTS LISTED BELOW MAY RESULT IN THE COSTLY REMOVAL OF STRUCTURES, TIME DELAYS OR THE ISSUANCE OF A STOP WORK ORDER.  
CONSTRUCTION PROCEDURE REQUIREMENTS

1. RIGHT-OF-WAY EXCAVATION PERMIT - PRIOR TO THE COMMENCEMENT OF ANY DIGGING, ALTERATION OR CONSTRUCTION WITHIN THE PUBLIC RIGHT-OF-WAY (STREETS, ALLEYS, PUBLIC EASEMENTS), A RIGHT-OF-WAY EXCAVATION PERMIT SHALL BE OBTAINED BY THE CONTRACTOR FROM THE CITY OF ROANOKE.
2. LAND DISTURBANCE PERMIT - AN APPROVED EROSION AND SEDIMENT CONTROL PLAN FOR ANY BORROW/FILL SITES ASSOCIATED WITH THE PROJECT MUST BE SUBMITTED PRIOR TO THE ISSUANCE OF A LAND DISTURBANCE PERMIT.
3. PLANS AND PERMITS - A COPY OF THE PLANS AS APPROVED BY THE CITY (SIGNED BY THE PROPER CITY OFFICIALS) AND ALL PERMITS ISSUED BY THE CITY SHALL BE AVAILABLE AT THE CONSTRUCTION SITE AT ALL TIMES OF ONGOING CONSTRUCTION.
4. LOCATION OF UTILITIES - THE CONTRACTOR SHALL VERIFY THE LOCATION OF ALL EXISTING UTILITIES PRIOR TO THE COMMENCEMENT OF ANY CONSTRUCTION.
5. CONSTRUCTION ENTRANCE - THE CONTRACTOR SHALL INSTALL AN ADEQUATE CONSTRUCTION ENTRANCE FOR ALL CONSTRUCTION RELATED EGRESS FROM THE SITE. SIZE AND COMPOSITION OF CONSTRUCTION ENTRANCE SHALL BE AS SHOWN ON THE PLANS.
6. STREETS TO REMAIN CLEAN - IT SHALL BE THE RESPONSIBILITY OF THE CONTRACTOR TO INSURE THAT THE PUBLIC STREET ADJACENT TO THE CONSTRUCTION ENTRANCE REMAINS FREE OF MUD, DIRT, DUST, AND/OR ANY TYPE OF CONSTRUCTION MATERIALS OR LITTER AT ALL TIMES.
7. BARRICADES/DITCHES - THE CONTRACTOR SHALL MAINTAIN THE INTEGRITY OF ALL EXCAVATED DITCHES AND SHALL FURNISH AND ENSURE THAT ALL BARRICADES PROPER AND NECESSARY FOR THE SAFETY OF THE PUBLIC ARE IN PLACE.
8. WATER, SEWER AND PAVEMENT REPLACEMENT - CONSTRUCTION OF POTABLE WATER, SANITARY SEWER AND THE REPLACEMENT OF PAVEMENT SHALL BE IN ACCORDANCE WITH APPROVED STANDARDS AND SPECIFICATIONS OF THE WESTERN VIRGINIA WATER AUTHORITY AND THE CITY OF ROANOKE.
9. APPROVED PLANS/CONSTRUCTION CHANGES - ANY CHANGE OR VARIATION FROM CONSTRUCTION DESIGN AS SHOWN ON THE OFFICIALLY APPROVED PLANS SHALL BE APPROVED BY THE EROSION AND SEDIMENT CONTROL AGENT PRIOR TO SAID CHANGES OR VARIATION IN CONSTRUCTION BEING MADE.
10. FINAL ACCEPTANCE/CITY - THE OWNER OR DEVELOPER SHALL FURNISH THE CITY OF ROANOKE'S PLANNING BUILDING AND DEVELOPMENT DEPARTMENT WITH A FIELD SURVEYED FINAL CORRECT SET OF AS-BUILT PLANS OF THE NEWLY CONSTRUCTED STORM DRAIN AND/OR STORMWATER MANAGEMENT FACILITIES PRIOR TO FINAL ACCEPTANCE AND ISSUANCE OF A CERTIFICATE OF OCCUPANCY BY THE CITY. AS-BUILT PLANS SHALL BE PROVIDED IN THE STATE PLANE VIRGINIA SOUTH COORDINATE SYSTEM, NAD 1983, FIPS 4502 FEET, US SURVEY FEET, DATUM NA 83, IN THE FORM OF 1 PAPER COPY AND 1 DIGITAL AUTOCAD FILE.
11. CONTRACTOR SHALL CALL MISS UTILITY AT 811 AND PROVIDE THE REQUIRED INFORMATION PRIOR TO EXCAVATION AND IN ACCORDANCE WITH THE UTILITY DAMAGE PREVENTION ACT.
12. CONTRACTOR SHALL NOTIFY ROANOKE GAS 48 HOURS IN ADVANCE OF WORKING NEAR GAS LINES AND MAKING ADJUSTMENTS TO GAS APPURTENANCES. CONTACT LARRY NICHOLS AT 540-793-4496.
13. NO MORE THAN 500 LINEAR FEET OF TRENCH MAY BE OPENED AT ONE TIME.

**WR&A** WHITMAN, REQUARDT  
& ASSOCIATES, LLP  
1700 KRAFT DRIVE, SUITE 1200  
BLACKSBURG, VA 24060



OFFICE OF THE CITY ENGINEER  
215 CHURCH AVENUE, SW  
ROOM 350  
ROANOKE, VIRGINIA 24011-1587  
PHONE: (540) 853-2731  
FAX: (540) 853-1364  
ENGINEER@ROANOKEVA.GOV

### UTILITY CONTACT NUMBERS:

APPALACHIAN POWER COMPANY  
40 FRANKLIN ROAD, SW  
ROANOKE, VA 24100  
800-956-4237

WESTERN VIRGINIA WATER AUTHORITY  
601 S. JEFFERSON STREET, SUITE 200  
ROANOKE, VA 24011  
540-853-5700

COX BUSINESS  
5400 FALLOWWATER LAKE, SW  
ROANOKE, VA 24018  
540-777-4753

ROANOKE GAS COMPANY  
519 KIMBALL AVENUE  
ROANOKE, VA 24015  
540-777-4427

APPROXIMATE DISTURBED PROJECT AREA = 0.39 AC = 16880 SF  
APPROXIMATE NET PROJECT IMPERVIOUS AREA REDUCTION = 0.08 AC = 3480 SF

ON-STREET PARKING SPACES PROVIDED = 40

## PROJECT NAME

SAFE ROUTES TO SCHOOL  
GARDEN CITY BOULEVARD

TAX MAP 9999998

PLAN NUMBER: 6764

VDOT PROJECT NUMBER: U000-128-R58, P101, M501

VDOT UPC: 105745

CITY PLANNING NUMBER: CP140018

FEDERAL PROJECT NUMBER: N/A

REVISION BY	DESCRIPTION:	DATE
REVISION BY	DESCRIPTION:	DATE

## INDEX OF SHEETS

TITLE SHEET	CS
EXISTING CONDITIONS / DEMOLITION PLANS	C1-C3
TYPICAL SECTIONS	C4
EROSION & SEDIMENT CONTROL MINIMUM	C5A
STANDARD NOTES	
E & S CONTROL NARRATIVE AND E & S NOTES	C5B
E&SC PLAN VIEWS	C6-C11
PLAN & PROFILE VIEWS	C12-C17
DRIVEWAY PROFILES	C18-C20
ALIGNMENT DATA	D1
DETAILS	D2-D3
TRANSPORTATION MANAGEMENT PLAN (PHASE I)	T1
MAINTENANCE OF TRAFFIC PLANS (PHASE I)	T2-T4
SIGNING AND PAVEMENT MARKING PLAN (PHASE I)	T5
TRANSPORTATION MANAGEMENT PLAN	T6
MAINTENANCE OF TRAFFIC PLANS	T7-T14
SIGNING AND PAVEMENT MARKING PLANS	T15-T17

## APPROVED FOR CONSTRUCTION

PARKS AND GREENWAYS PLANNER

DATE

DIRECTOR OF PARKS AND RECREATION

DATE

ASSISTANT CITY MANAGER OF COMMUNITY DEVELOPMENT

DATE

### DEVELOPMENT PLAN APPROVED

Agent, Planning Commission *[Signature]* Date 8/13/15  
Development Engineer *[Signature]* Date 8/13/15  
Zoning Administrator *[Signature]* Date 8/13/15  
Any changes to this approved plan must be coordinated with the Agent to the Planning Commission and revisions approved prior to construction.

SHEET NUMBER: CS

SAFE ROUTES TO SCHOOL  
GARDEN CITY BOULEVARD

CHARLES CRUSH  
AS-BUILT