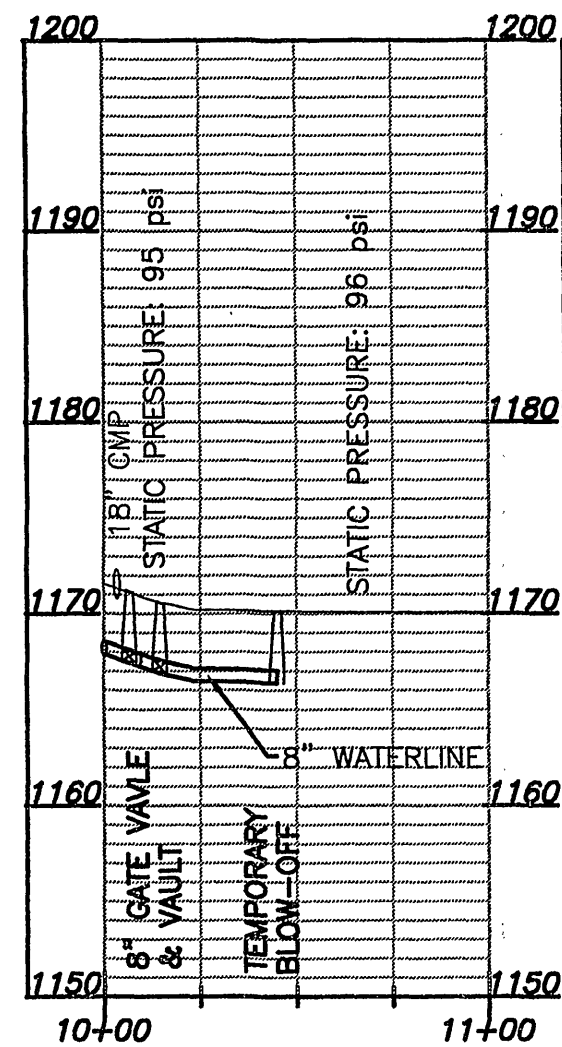
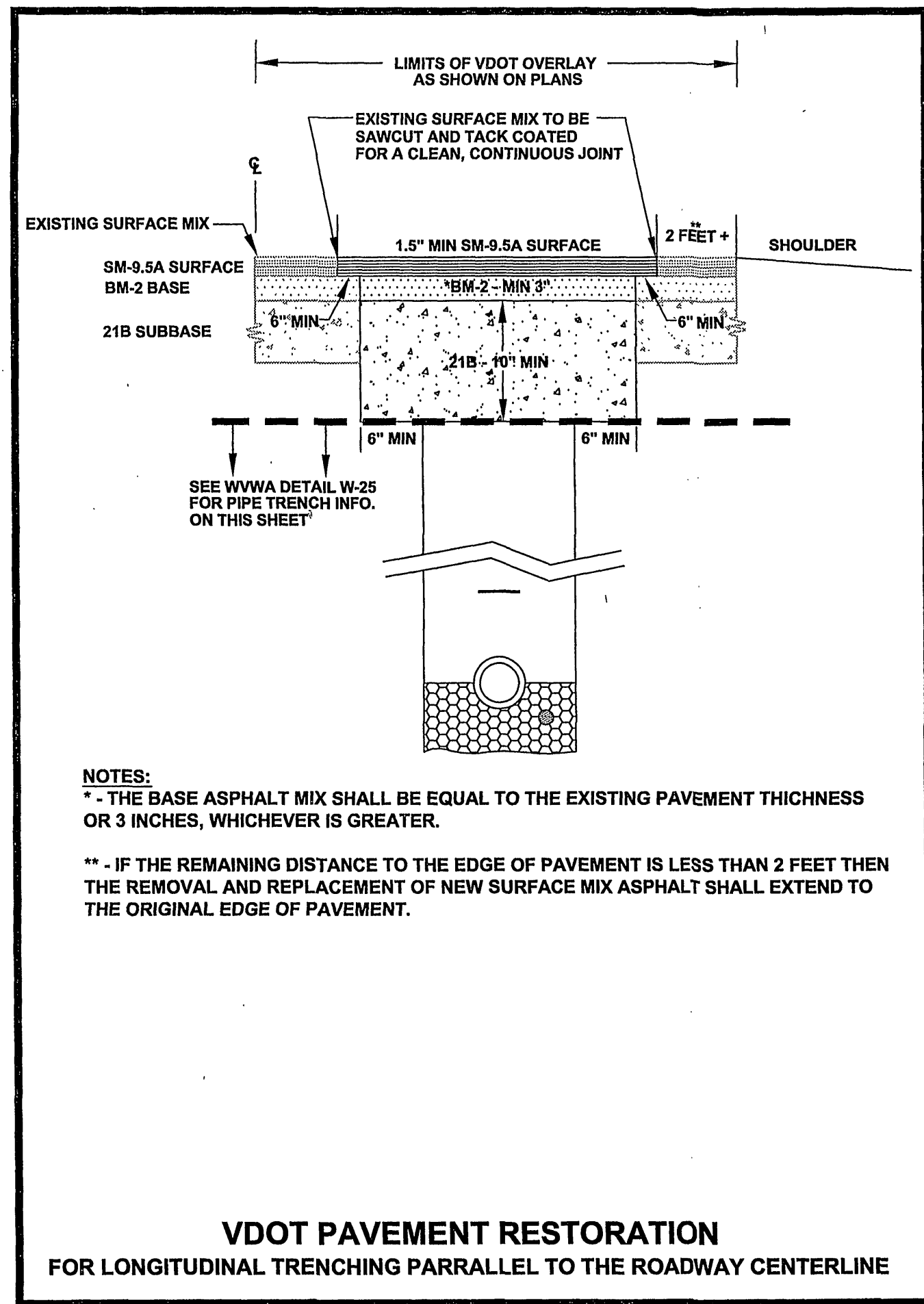


### SHELBY DR WATERLINE STUB-OUT

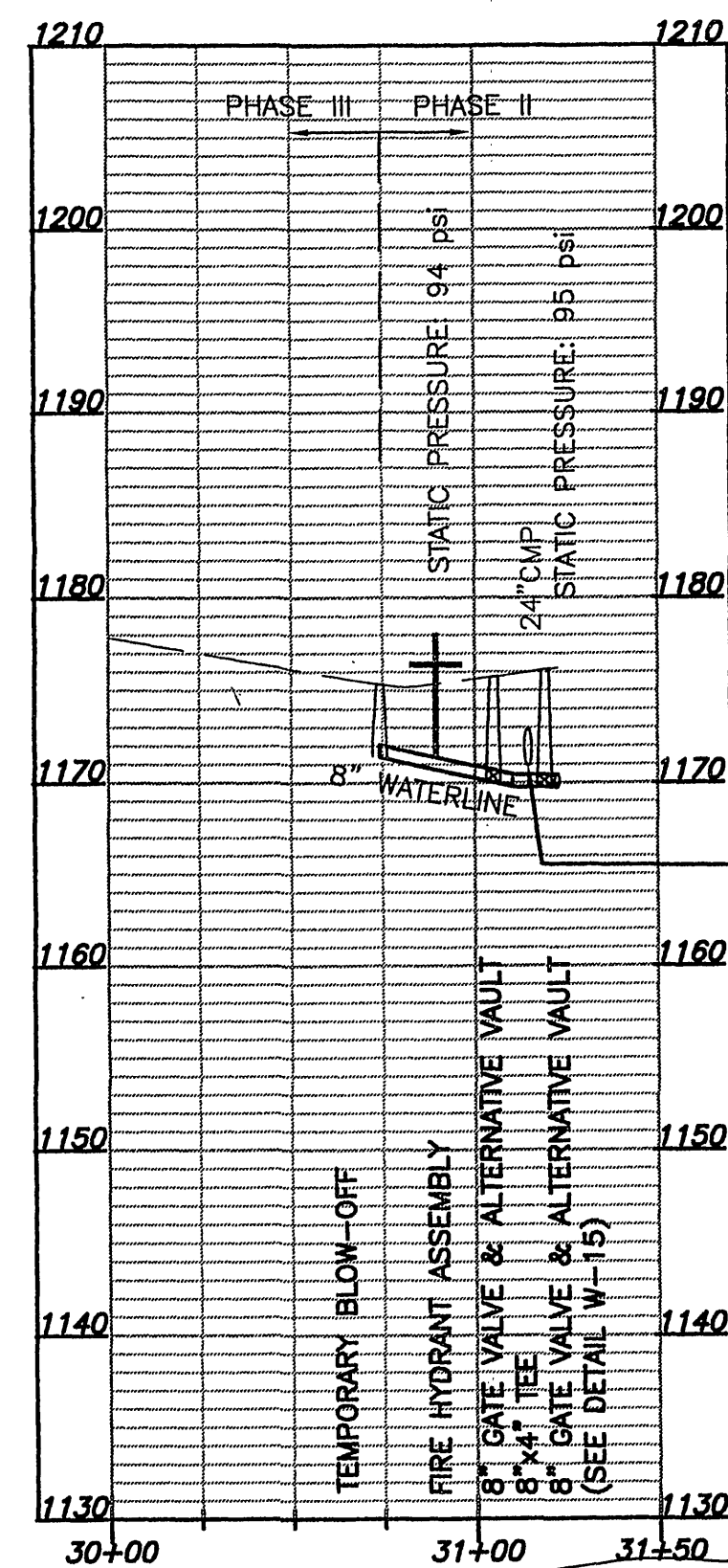


CONTRACTOR TO MAINTAIN A MINIMUM OF 18" OF VERTICAL SEPARATION BETWEEN WATER AND SEWER LINES. IT IS DESIRABLE THAT THE WATER LINE CROSSES ABOVE THE SEWER LINE OR SEWER LATERAL.

ALL SERVICES CONNECTED TO SHELBY LANE WATERLINE WILL BE REQUIRED TO HAVE A PRESSURE REDUCING VALVE (PRV) INSTALLED ON THE WATER SERVICE LATERAL AS SHOWN IN DETAIL W-02.



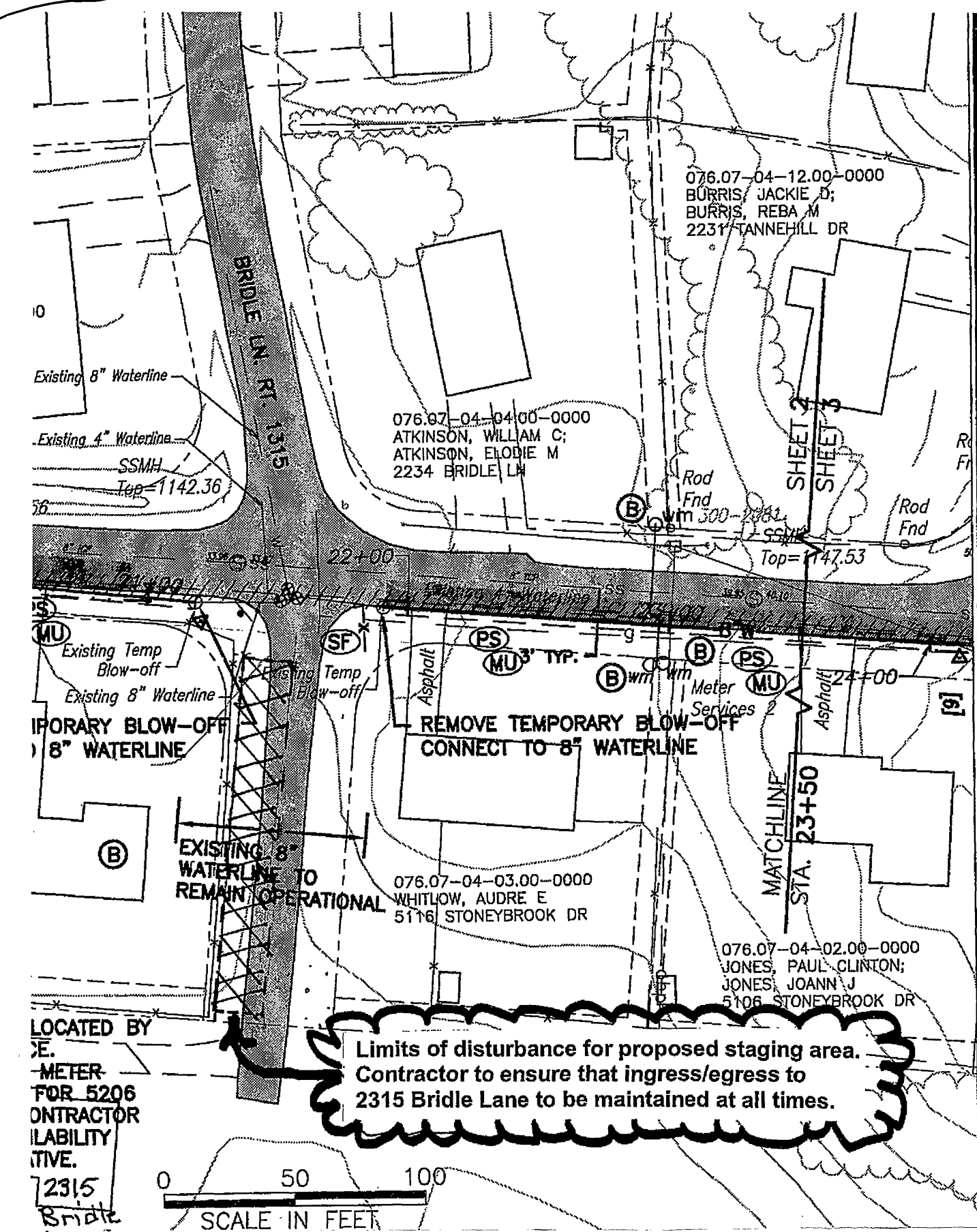
### SORREL LN WATERLINE STUB-OUT



ALL SERVICES CONNECTED TO SORREL LANE WATERLINE WILL BE REQUIRED TO HAVE A PRESSURE REDUCING VALVE (PRV) INSTALLED ON THE WATER SERVICE LATERAL AS SHOWN IN DETAIL W-02.

CONTRACTOR TO MAINTAIN A MINIMUM OF 18" OF VERTICAL SEPARATION BETWEEN WATER AND SEWER LINES. IT IS DESIRABLE THAT THE WATER LINE CROSSES ABOVE THE SEWER LINE OR SEWER LATERAL.

CONTRACTOR TO ENSURE A MINIMUM SEPARATION OF 2' FROM EXISTING STORM DRAINAGE PIPE.



ANDERSON & ASSOCIATES, INC.

ANDERSON & ASSOCIATES, INC.

Professional Design Services

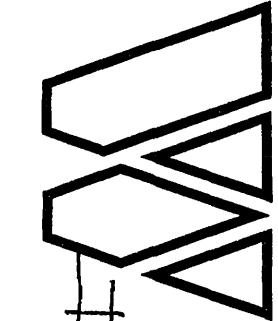
www.andassoc.com

VA - NC - TN - WV

100 Ardmore St.

Blacksburg, Va. 24060

540-552-5592



PROJECT DETAILS V  
GLEN HEATHER FARMS AREA  
WATER LINE REPLACEMENTS  
PHASE II

Designed By: TFB

Drawn By: CBD/LTB

Checked By: JKD

Date: 13 JAN 2010

Revised: 01 FEB 2010  
09 APR 2010  
22 JUN 2010  
09 JUL 2010

Scale:

Plan #: 27379-002

Sheet: 12 OF 12