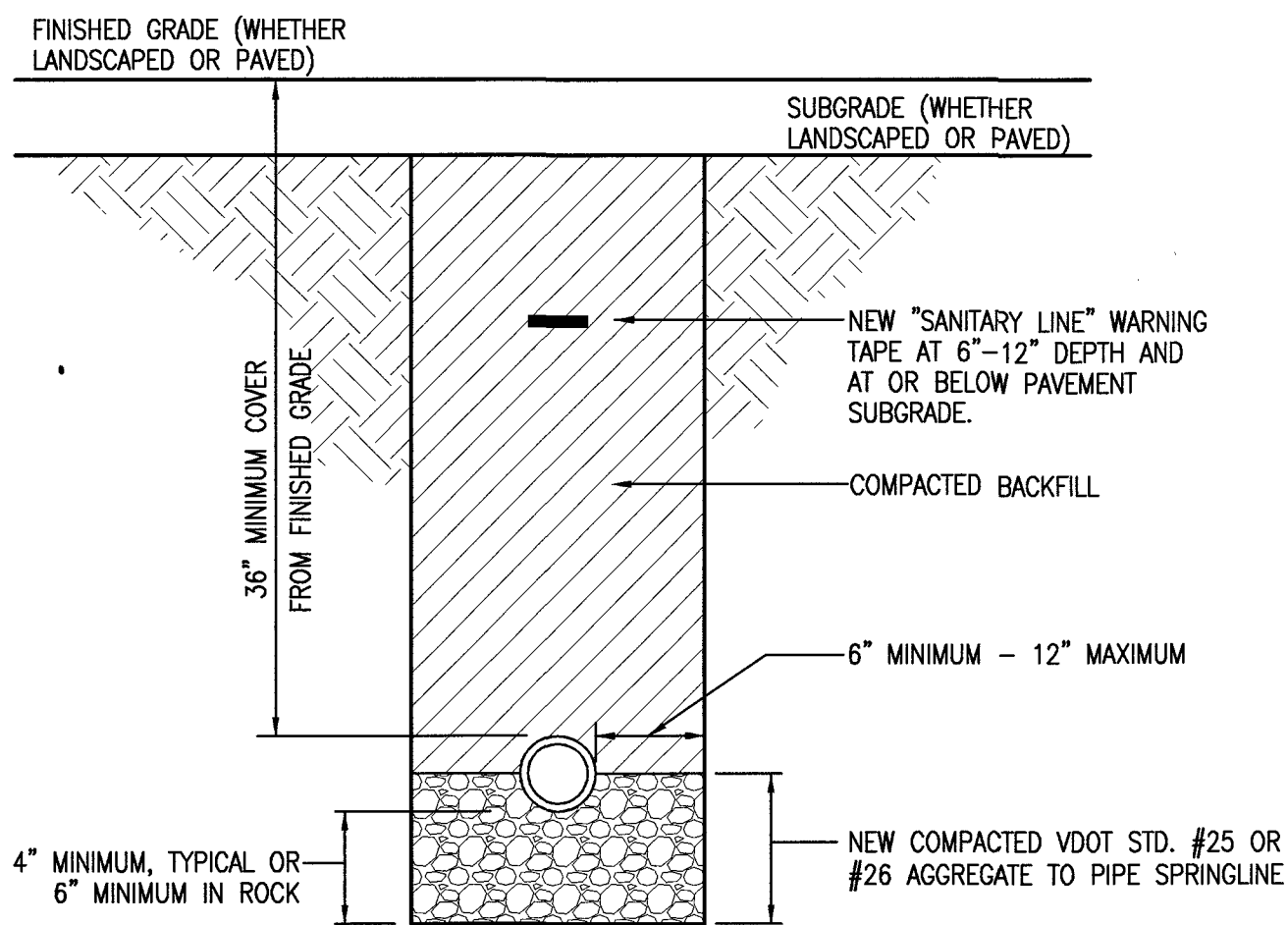


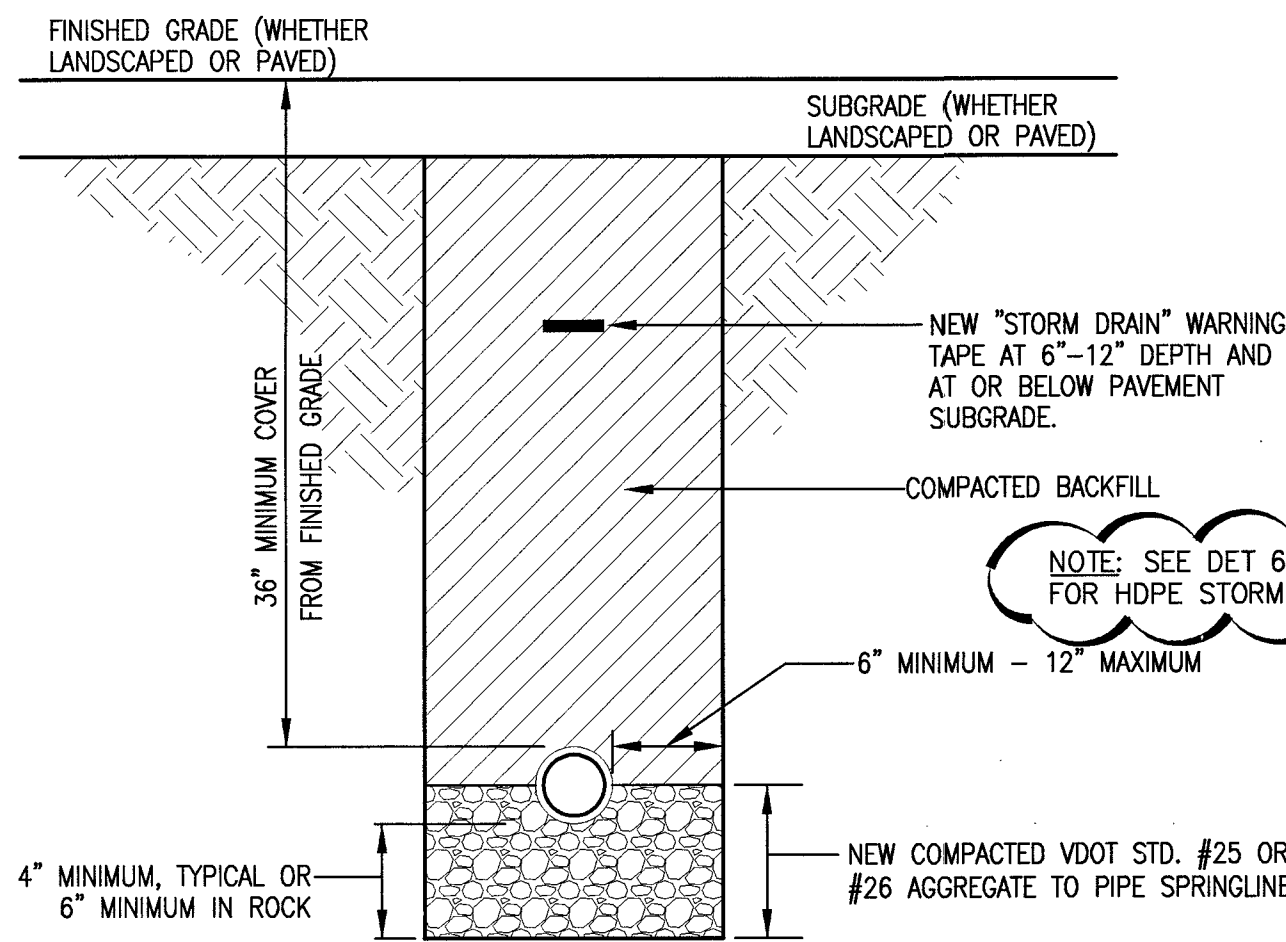
NEW WATER LINE TRENCH SECTION
40
C106 C504 NO SCALE

UNLESS DEFINED ELSEWHERE BY SPECS (BOUND OR ON PLAN SHEETS), BACKFILL SHALL BE AS APPROVED BY THE GEOTECHNICAL ENGINEER.



NEW SANITARY LINE TRENCH SECTION
NO SCALE

UNLESS DEFINED ELSEWHERE BY SPECS (BOUND OR ON PLAN SHEETS), BACKFILL SHALL BE AS APPROVED BY THE GEOTECHNICAL ENGINEER.

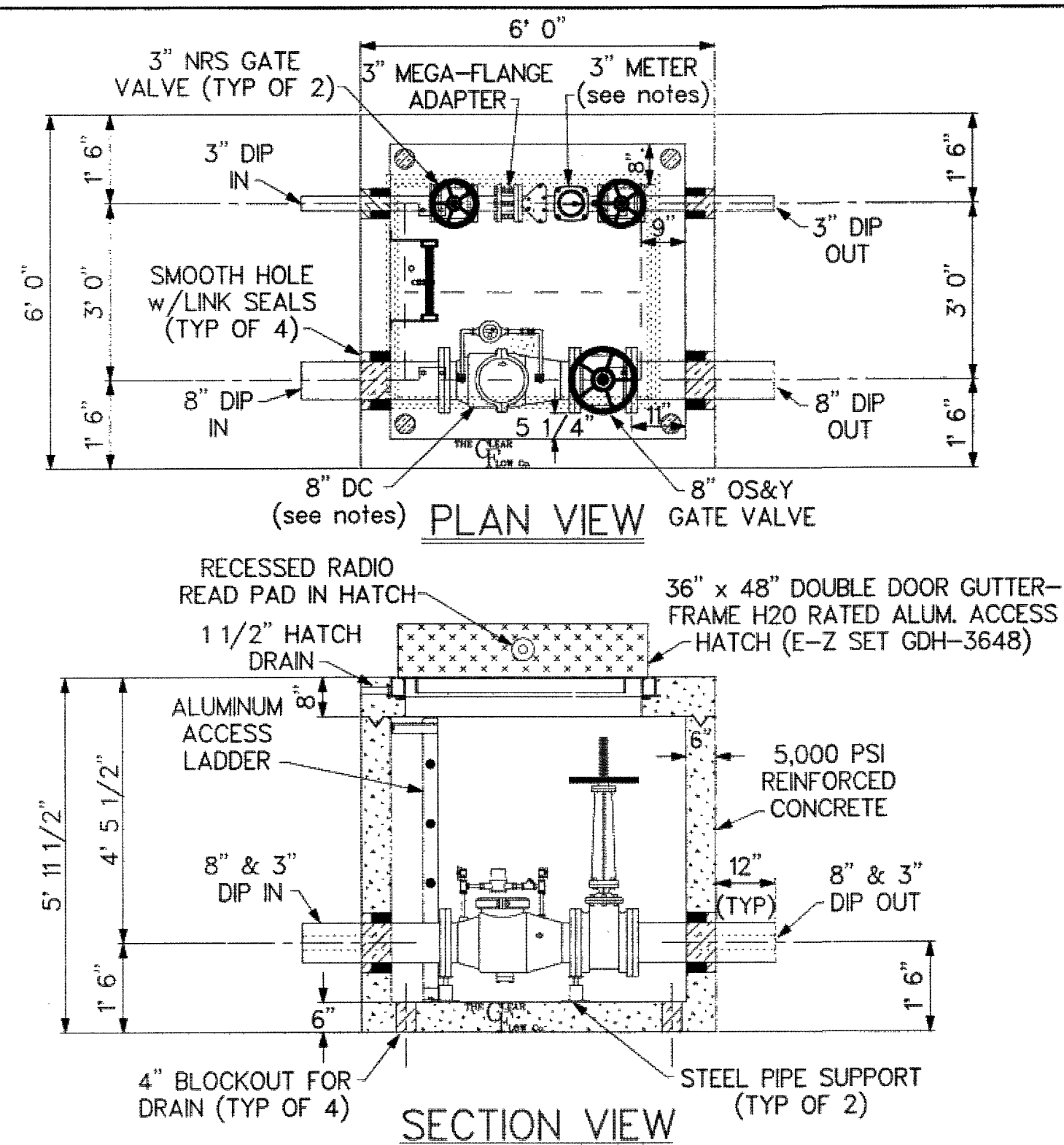


NEW STORM LINE TRENCH SECTION
NO SCALE

UNLESS DEFINED ELSEWHERE BY SPECS (BOUND OR ON PLAN SHEETS), BACKFILL AND SELECT BACKFILL SHALL BE AS APPROVED BY THE GEOTECHNICAL ENGINEER.

POST INDICATOR VALVE INSTALLATION
41
C106 C504 NO SCALE

NOTE: REFER TO SPECIFICATIONS FOR PROCEDURE AND NOTIFICATION FOR ANY INTERRUPTION IN WATER SERVICE.

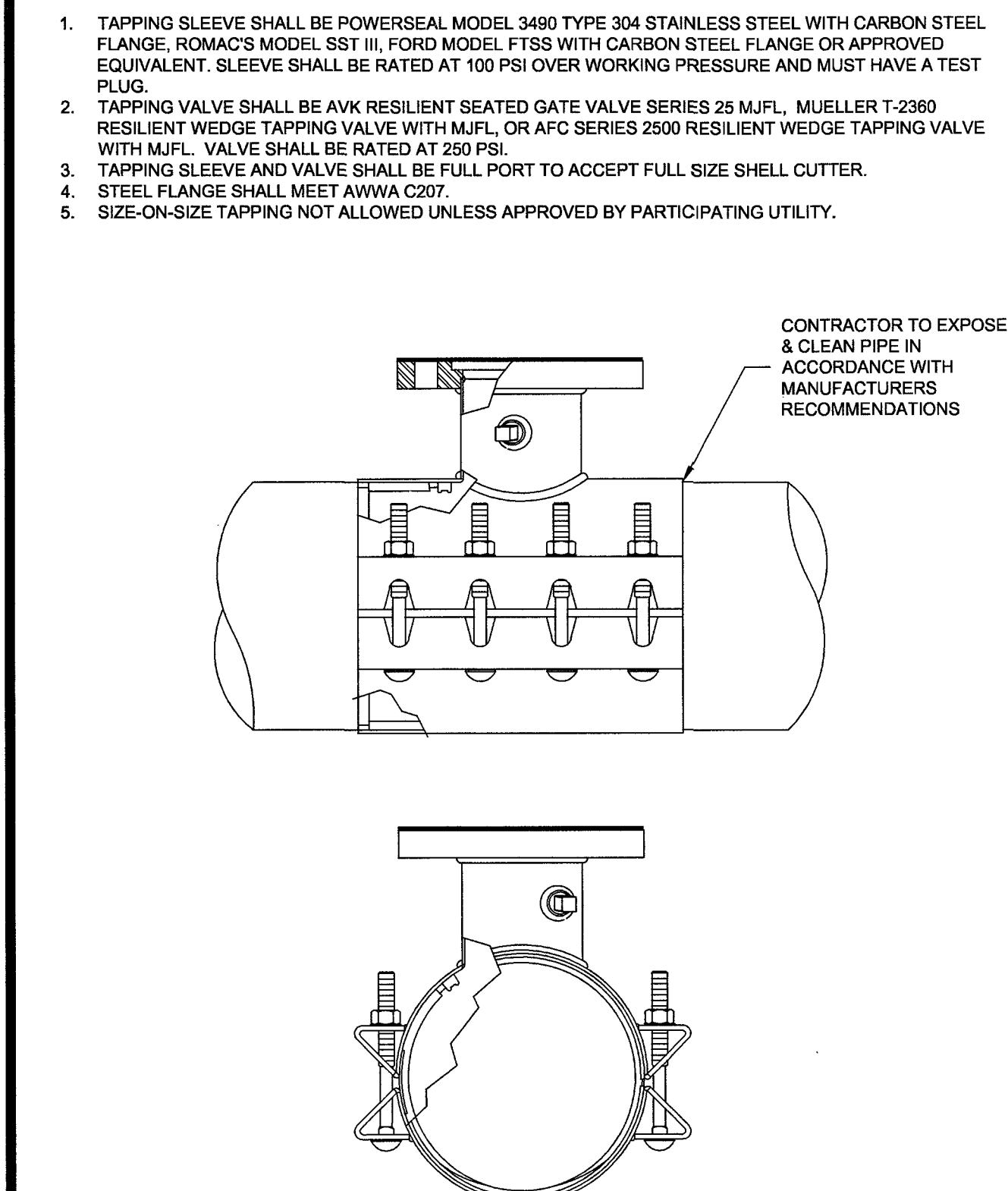


- NOTES:
1. CLEAR FLOW VAULT SHIPPED ASSEMBLED WEIGHING APPROX. 16,000 LBS.
 2. 8" WILKINS 310DAL SINGLE CHECK DETECTOR ASSEMBLY w/OS&Y GATE VALVE
 3. 3" METER SUPPLIED TO CLEAR FLOW BY THE WESTERN VA WATER AUTHORITY

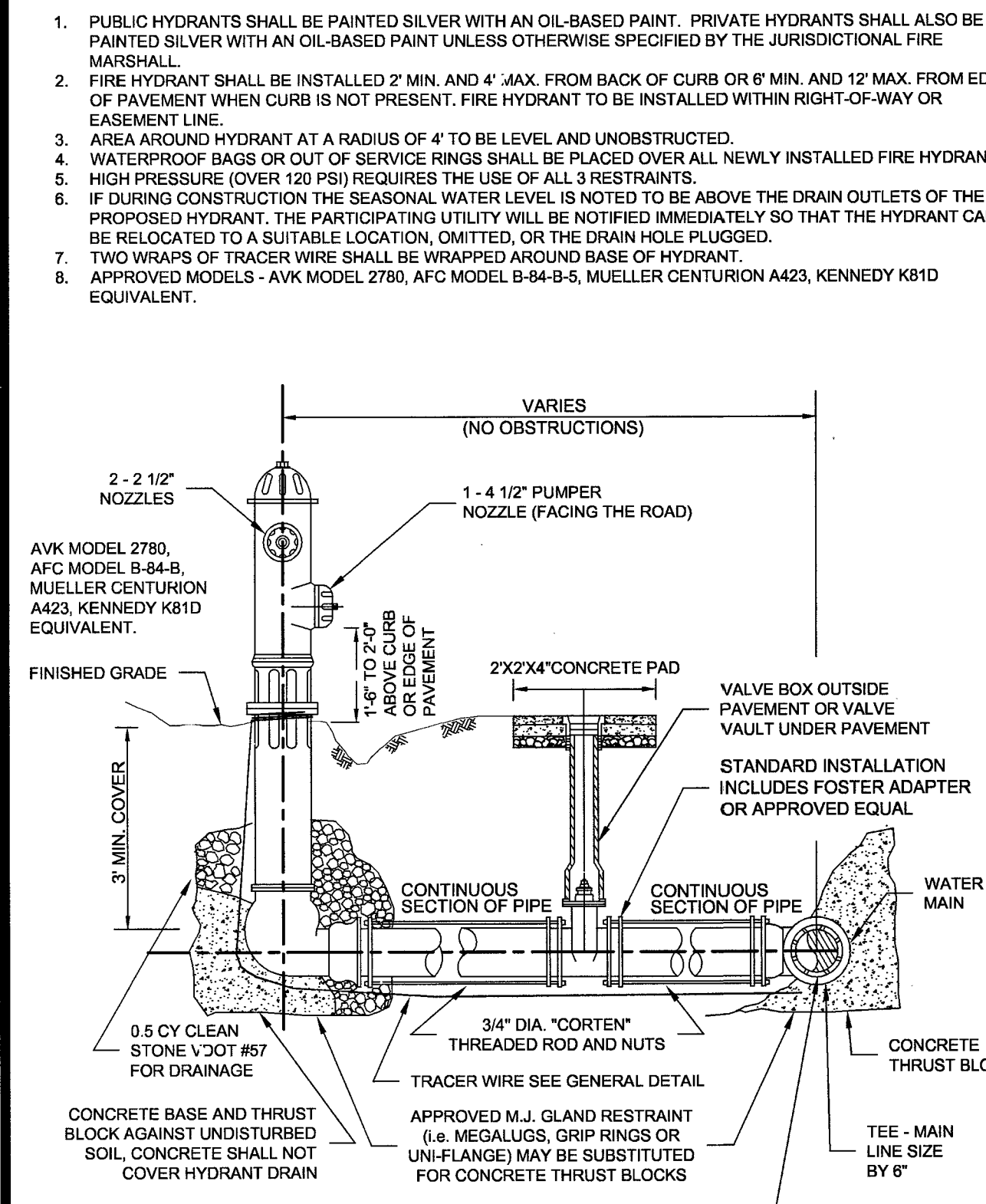
DESIGN	STEVEN I. GORDON	ROANOKE COUNTY, VIRGINIA
DRAWN	STEVEN I. GORDON	
REVISIONS	DATE	
1. 1/2" HATCH DRAIN	10/09/10	
2. 1/2" HATCH DRAIN	10/09/10	
3. 1/2" HATCH DRAIN	10/09/10	
4. 1/2" HATCH DRAIN	10/09/10	
5. 1/2" HATCH DRAIN	10/09/10	
6. 1/2" HATCH DRAIN	10/09/10	
7. 1/2" HATCH DRAIN	10/09/10	
8. 1/2" HATCH DRAIN	10/09/10	
9. 1/2" HATCH DRAIN	10/09/10	
10. 1/2" HATCH DRAIN	10/09/10	
11. 1/2" HATCH DRAIN	10/09/10	
12. 1/2" HATCH DRAIN	10/09/10	
13. 1/2" HATCH DRAIN	10/09/10	
14. 1/2" HATCH DRAIN	10/09/10	
15. 1/2" HATCH DRAIN	10/09/10	
16. 1/2" HATCH DRAIN	10/09/10	
17. 1/2" HATCH DRAIN	10/09/10	
18. 1/2" HATCH DRAIN	10/09/10	
19. 1/2" HATCH DRAIN	10/09/10	
20. 1/2" HATCH DRAIN	10/09/10	
21. 1/2" HATCH DRAIN	10/09/10	
22. 1/2" HATCH DRAIN	10/09/10	
23. 1/2" HATCH DRAIN	10/09/10	
24. 1/2" HATCH DRAIN	10/09/10	
25. 1/2" HATCH DRAIN	10/09/10	
26. 1/2" HATCH DRAIN	10/09/10	
27. 1/2" HATCH DRAIN	10/09/10	
28. 1/2" HATCH DRAIN	10/09/10	
29. 1/2" HATCH DRAIN	10/09/10	
30. 1/2" HATCH DRAIN	10/09/10	
31. 1/2" HATCH DRAIN	10/09/10	
32. 1/2" HATCH DRAIN	10/09/10	
33. 1/2" HATCH DRAIN	10/09/10	
34. 1/2" HATCH DRAIN	10/09/10	
35. 1/2" HATCH DRAIN	10/09/10	
36. 1/2" HATCH DRAIN	10/09/10	
37. 1/2" HATCH DRAIN	10/09/10	
38. 1/2" HATCH DRAIN	10/09/10	
39. 1/2" HATCH DRAIN	10/09/10	
40. 1/2" HATCH DRAIN	10/09/10	
41. 1/2" HATCH DRAIN	10/09/10	
42. 1/2" HATCH DRAIN	10/09/10	
43. 1/2" HATCH DRAIN	10/09/10	
44. 1/2" HATCH DRAIN	10/09/10	
45. 1/2" HATCH DRAIN	10/09/10	
46. 1/2" HATCH DRAIN	10/09/10	
47. 1/2" HATCH DRAIN	10/09/10	
48. 1/2" HATCH DRAIN	10/09/10	
49. 1/2" HATCH DRAIN	10/09/10	
50. 1/2" HATCH DRAIN	10/09/10	
51. 1/2" HATCH DRAIN	10/09/10	
52. 1/2" HATCH DRAIN	10/09/10	
53. 1/2" HATCH DRAIN	10/09/10	
54. 1/2" HATCH DRAIN	10/09/10	
55. 1/2" HATCH DRAIN	10/09/10	
56. 1/2" HATCH DRAIN	10/09/10	
57. 1/2" HATCH DRAIN	10/09/10	
58. 1/2" HATCH DRAIN	10/09/10	
59. 1/2" HATCH DRAIN	10/09/10	
60. 1/2" HATCH DRAIN	10/09/10	
61. 1/2" HATCH DRAIN	10/09/10	
62. 1/2" HATCH DRAIN	10/09/10	
63. 1/2" HATCH DRAIN	10/09/10	
64. 1/2" HATCH DRAIN	10/09/10	
65. 1/2" HATCH DRAIN	10/09/10	
66. 1/2" HATCH DRAIN	10/09/10	
67. 1/2" HATCH DRAIN	10/09/10	
68. 1/2" HATCH DRAIN	10/09/10	
69. 1/2" HATCH DRAIN	10/09/10	
70. 1/2" HATCH DRAIN	10/09/10	
71. 1/2" HATCH DRAIN	10/09/10	
72. 1/2" HATCH DRAIN	10/09/10	
73. 1/2" HATCH DRAIN	10/09/10	
74. 1/2" HATCH DRAIN	10/09/10	
75. 1/2" HATCH DRAIN	10/09/10	
76. 1/2" HATCH DRAIN	10/09/10	
77. 1/2" HATCH DRAIN	10/09/10	
78. 1/2" HATCH DRAIN	10/09/10	
79. 1/2" HATCH DRAIN	10/09/10	
80. 1/2" HATCH DRAIN	10/09/10	
81. 1/2" HATCH DRAIN	10/09/10	
82. 1/2" HATCH DRAIN	10/09/10	
83. 1/2" HATCH DRAIN	10/09/10	
84. 1/2" HATCH DRAIN	10/09/10	
85. 1/2" HATCH DRAIN	10/09/10	
86. 1/2" HATCH DRAIN	10/09/10	
87. 1/2" HATCH DRAIN	10/09/10	
88. 1/2" HATCH DRAIN	10/09/10	
89. 1/2" HATCH DRAIN	10/09/10	
90. 1/2" HATCH DRAIN	10/09/10	
91. 1/2" HATCH DRAIN	10/09/10	
92. 1/2" HATCH DRAIN	10/09/10	
93. 1/2" HATCH DRAIN	10/09/10	
94. 1/2" HATCH DRAIN	10/09/10	
95. 1/2" HATCH DRAIN	10/09/10	
96. 1/2" HATCH DRAIN	10/09/10	
97. 1/2" HATCH DRAIN	10/09/10	
98. 1/2" HATCH DRAIN	10/09/10	
99. 1/2" HATCH DRAIN	10/09/10	
100. 1/2" HATCH DRAIN	10/09/10	

CLEAR FLOW
By AMERICAST
210 STONE SPRING ROAD
HARRISONBURG, VA 22801
(540) 434-2130
REF. NO. GLENVAR HS-WVWA DCBx3

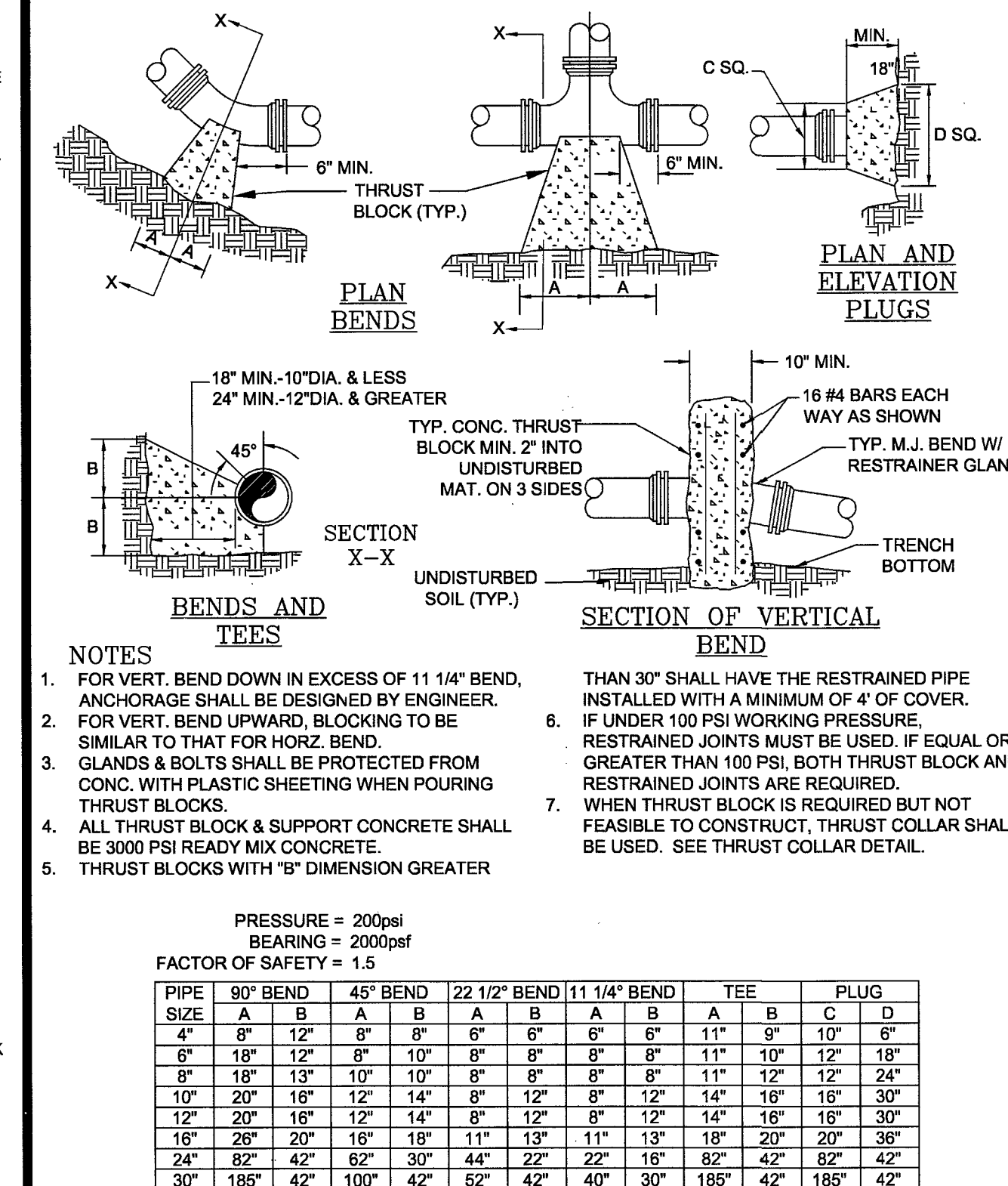
WATER VAULT - DETAIL
43
C106 C504 NO SCALE



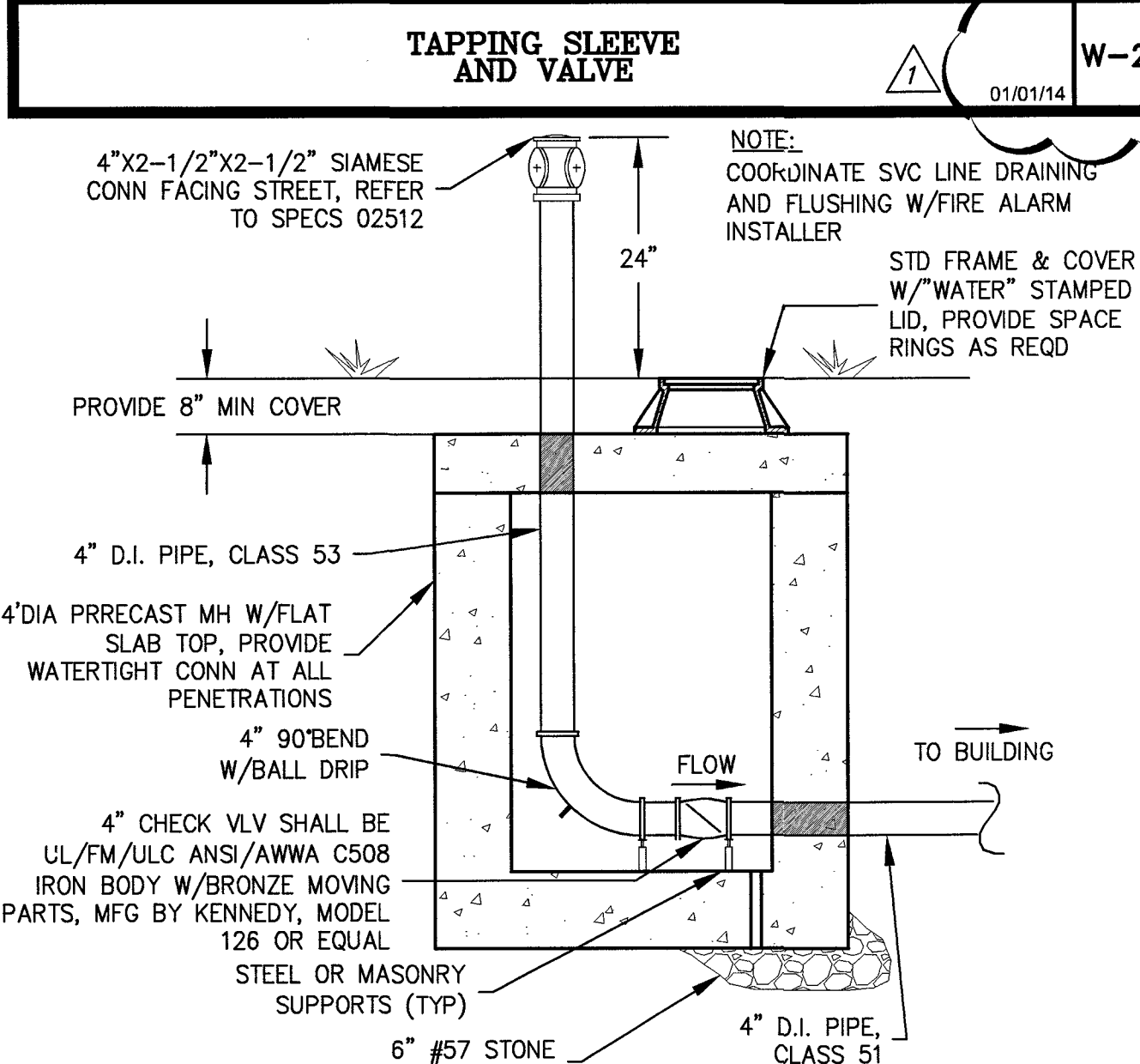
WESTERN VIRGINIA REGIONAL - CONSTRUCTION DETAIL
TAPPING SLEEVE AND VALVE
W-21
01/01/14



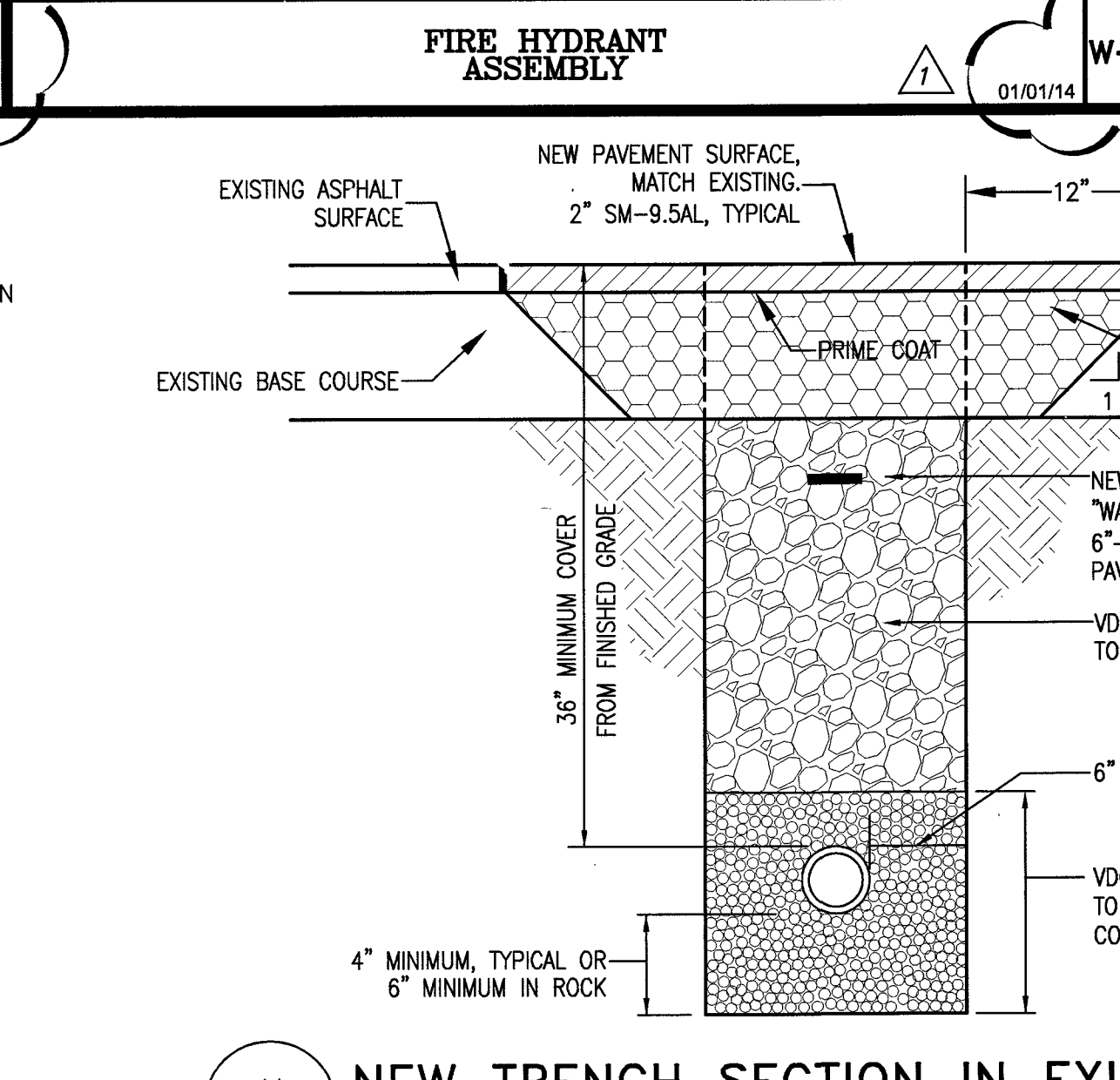
WESTERN VIRGINIA REGIONAL - CONSTRUCTION DETAIL
FIRE HYDRANT ASSEMBLY
W-17
01/01/14



WESTERN VIRGINIA REGIONAL - CONSTRUCTION DETAIL
THRUST BLOCK REQUIREMENTS
W-18
01/01/14



42 FIRE DEPT CONNECTION DETAIL
C106 C504 NO SCALE

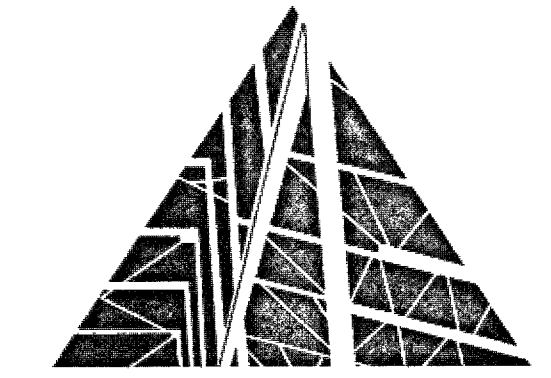


44 NEW TRENCH SECTION IN EXISTING PAVEMENT
C107 C504 NO SCALE

UNLESS DEFINED ELSEWHERE BY SPECS (BOUND OR ON PLAN SHEETS), BACKFILL SHALL BE AS APPROVED BY THE GEOTECHNICAL ENGINEER.

KEY PLAN

GENERAL NOTES



10 CHURCH AVE SE, PLAZA SUITE 1 ROANOKE, VIRGINIA 24011 540.342.6001

GLENVAR HIGH SCHOOL RENOVATIONS & ADDITIONS

ROANOKE COUNTY

VA DOE PROJECT#:80-61-00-101

SPECTRUM DESIGN PROJECT NO. 13054



DATE: 06 APRIL 2014
DESIGN ARCHITECT: CZV
PROJECT ARCHITECT: MF
CHECKED BY: DATE: 05/14/14
REVISIONS: NUMBER 1
COUNTY REVIEW #1

SHEET TITLE

UTILITY DETAILS

C504

J:\13054\Civil\DWG\13054 Details.dwg, Plotted: Jun 09, 2014 - 4:40pm

APPROVED