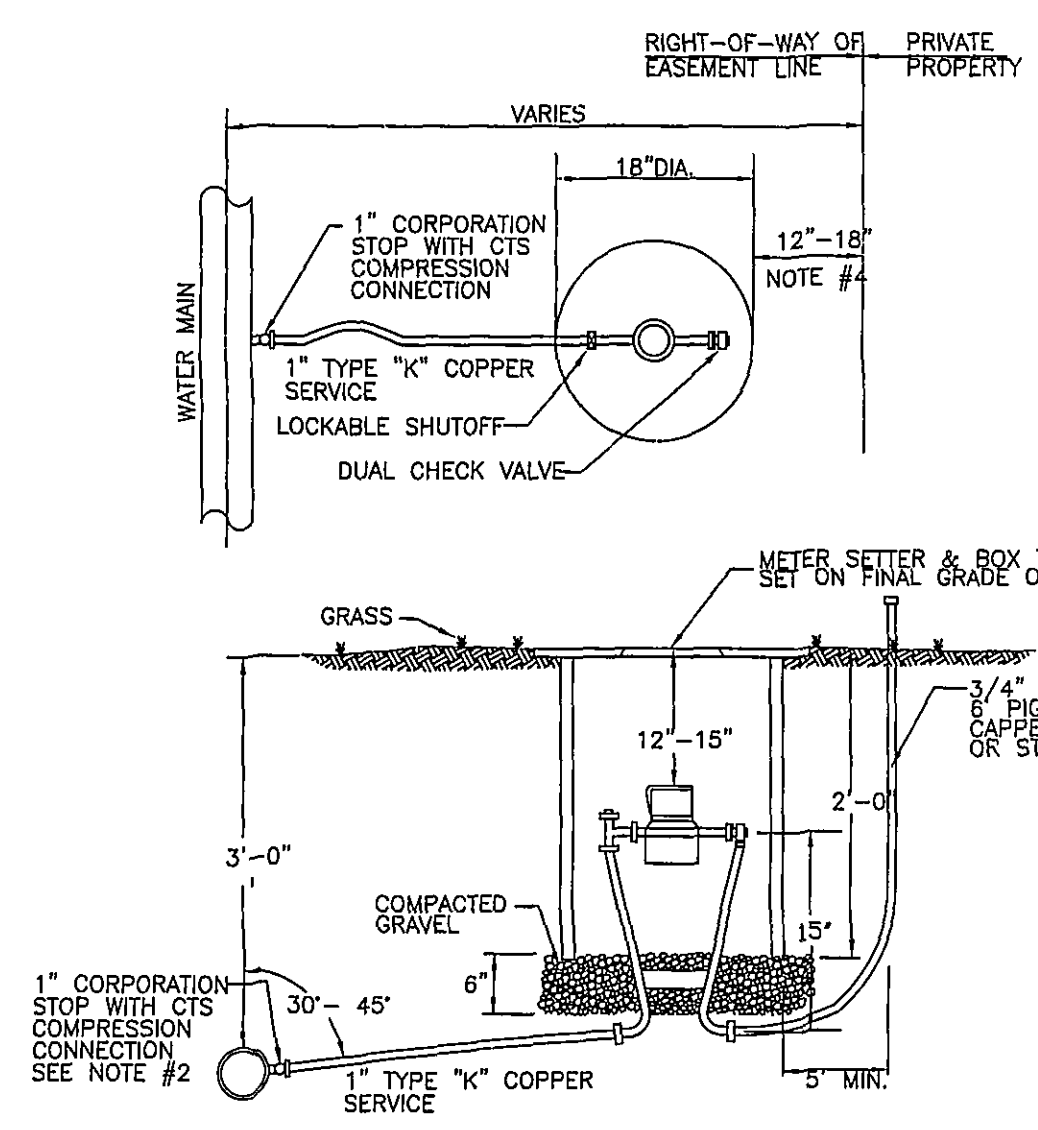
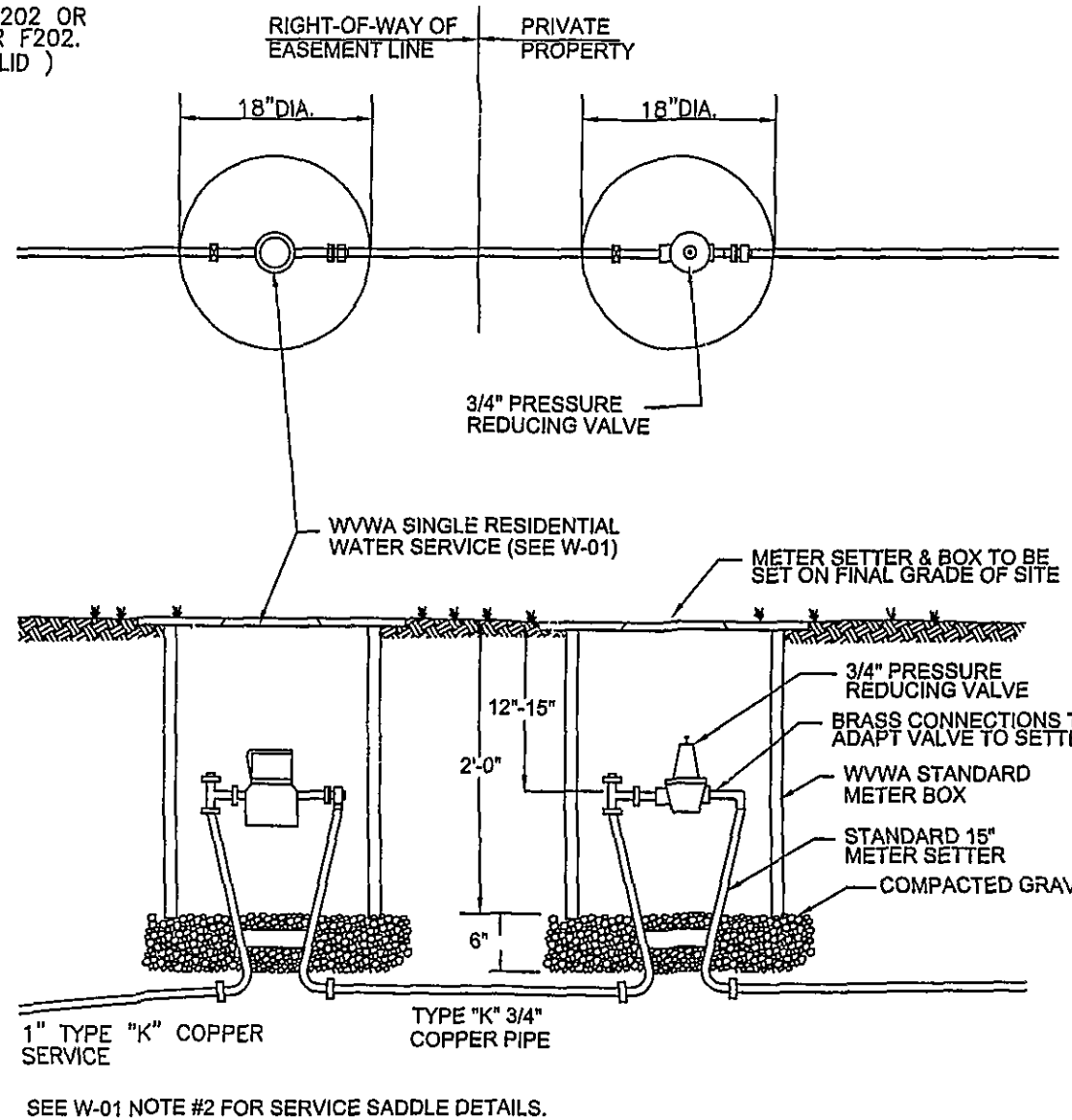


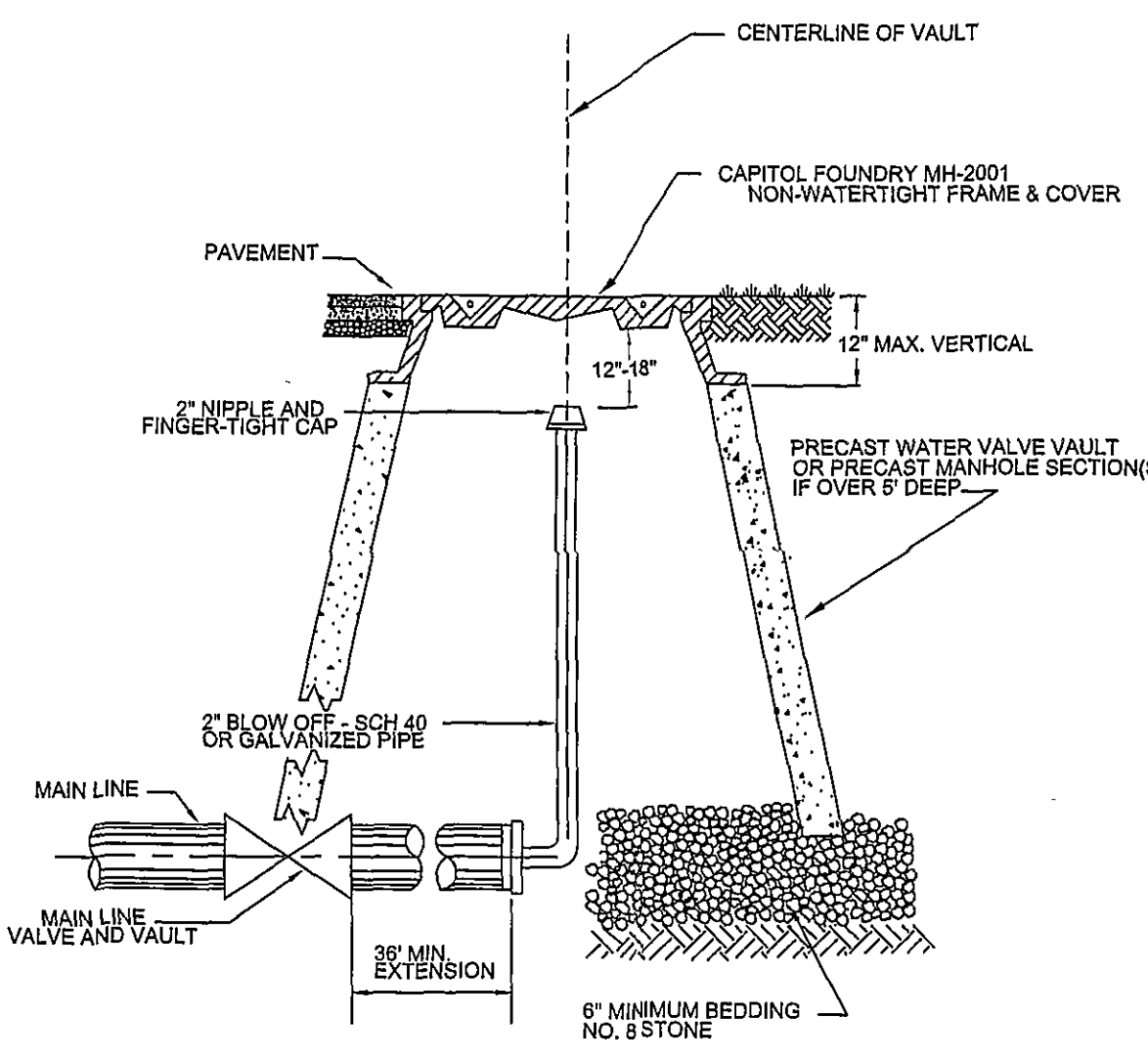
1. SETTER TO BE A.Y. McDONALD #20-215 WDL33, FORD VBHH72-15W-1133 OR APPROVED EQUAL.
2. SADDLES MUST BE USED WITH ALL PLASTIC & CLASS 50 DUCTILE IRON PIPE. SERVICE SADDLES SHALL BE USED IN ACCORDANCE WITH SECTION 2666 OF THE WATER STANDARDS. SERVICE SADDLES FOR PLASTIC PIPE SHALL BE: POWERSEAL 3417 OR 3412AS, ROMAC 202S, OR 306, OR FORD METER FS202 OR FS303. FOR DUCTILE IRON PIPE USE THE ABOVE OR POWERSEAL 3413, ROMAC 202 OR FORD METER F202.
3. METER BOX MUST BE MID-STATES PLASTICS, INC. PLASTIC BOX WITH FORD A32-T (ELECTRONIC READ LID) OR A.Y. McDONALD MODEL 74M32C-TO CAST IRON BASE & COVER OR APPROVED EQUAL.
4. WHENEVER SIDEWALK EXISTS OR IS PROPOSED, MODIFY METER LOCATION AS DIRECTED.
5. CORPORATION STOP MUST BE FORD F1000-4-6 OR APPROVED EQUAL.



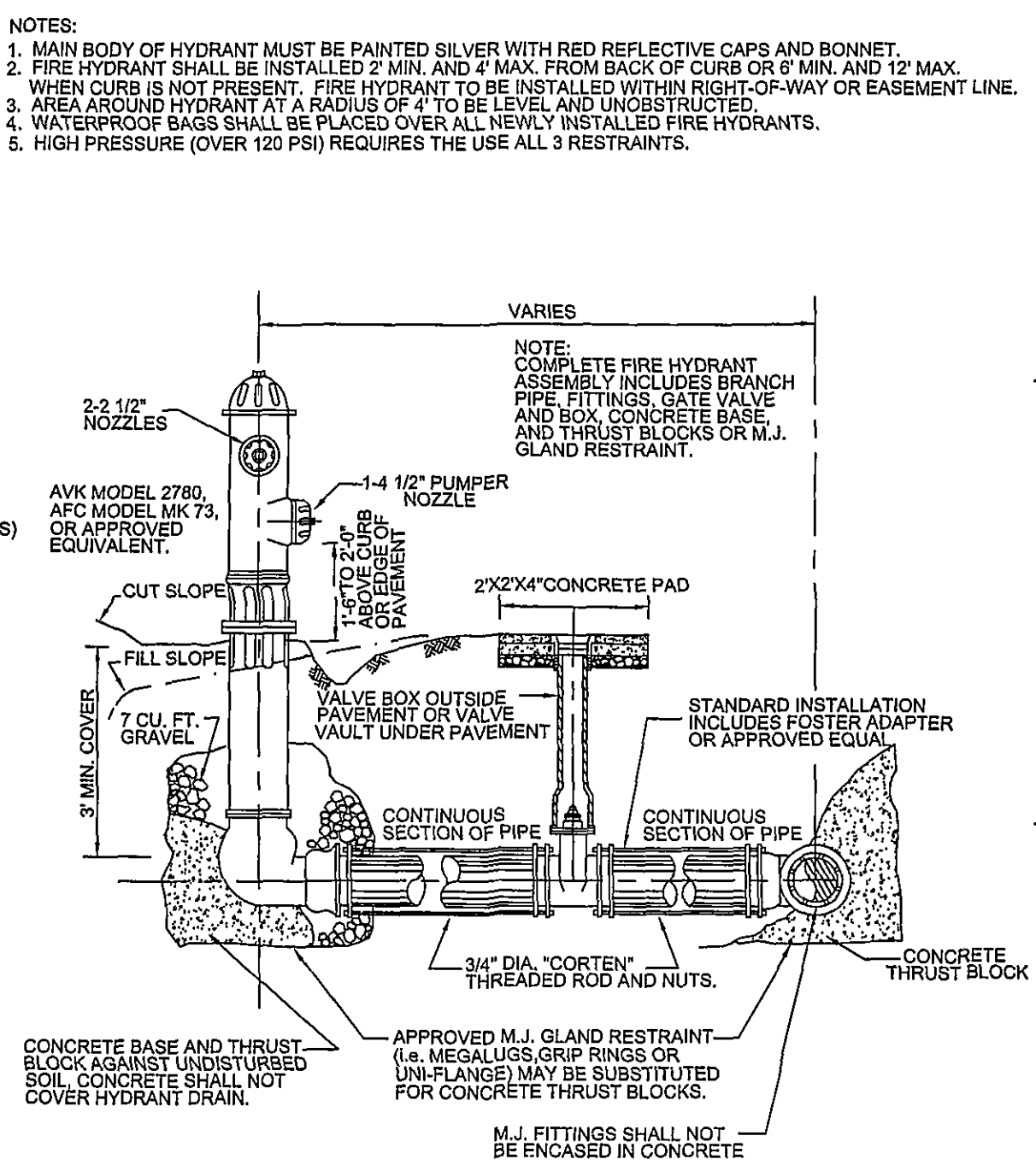
TYPE "A"
SINGLE RESIDENTIAL
WATER SERVICE
(LINE PRESSURE UNDER 80 PSI)



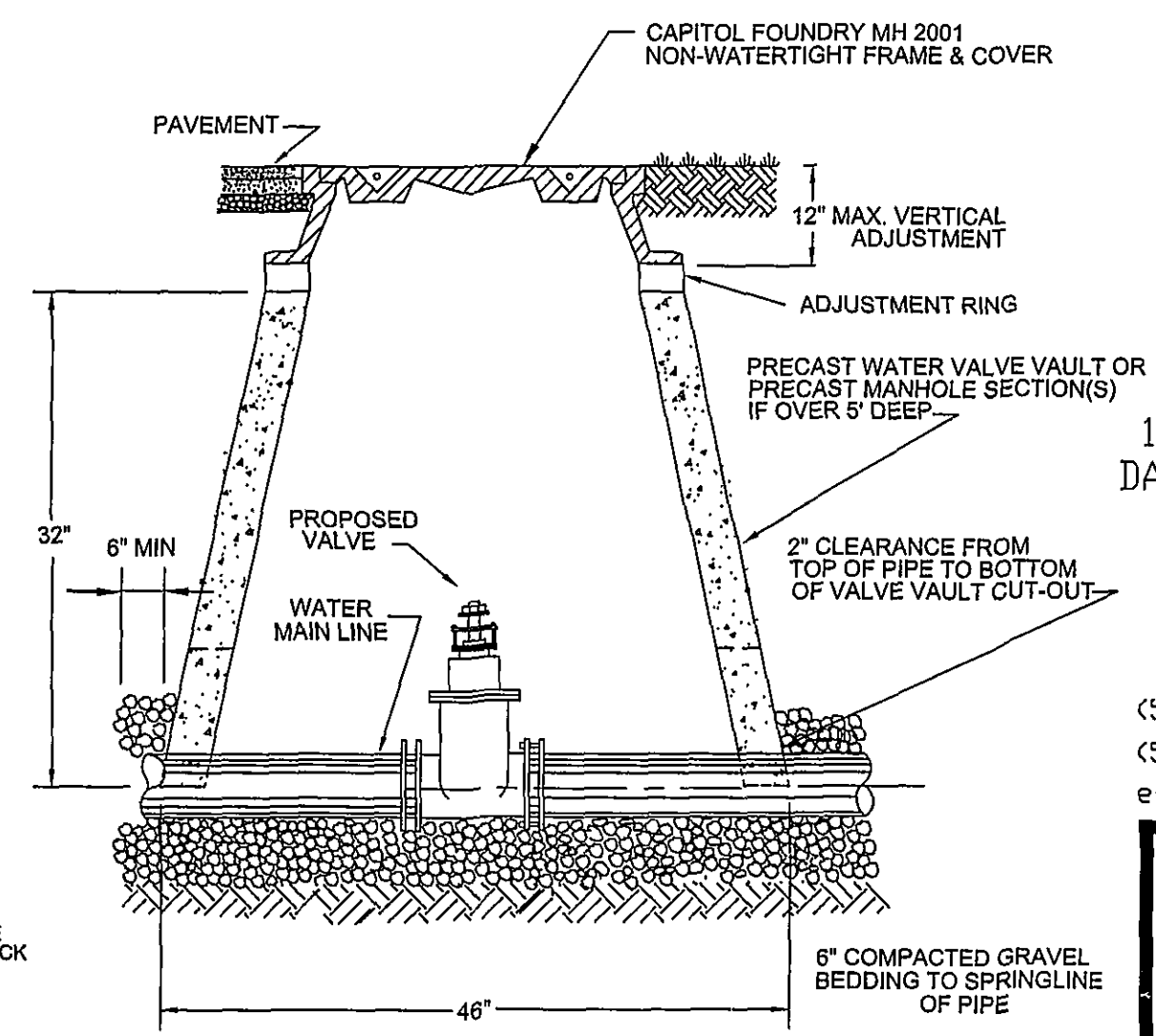
TYPE "B"
SINGLE RESIDENTIAL
WATER SERVICE
(LINE PRESSURE UNDER 80 TO 120 PSI)



BLOW-OFF ASSEMBLY
FOR MAIN LINE
TEMPORARY TERMINATION

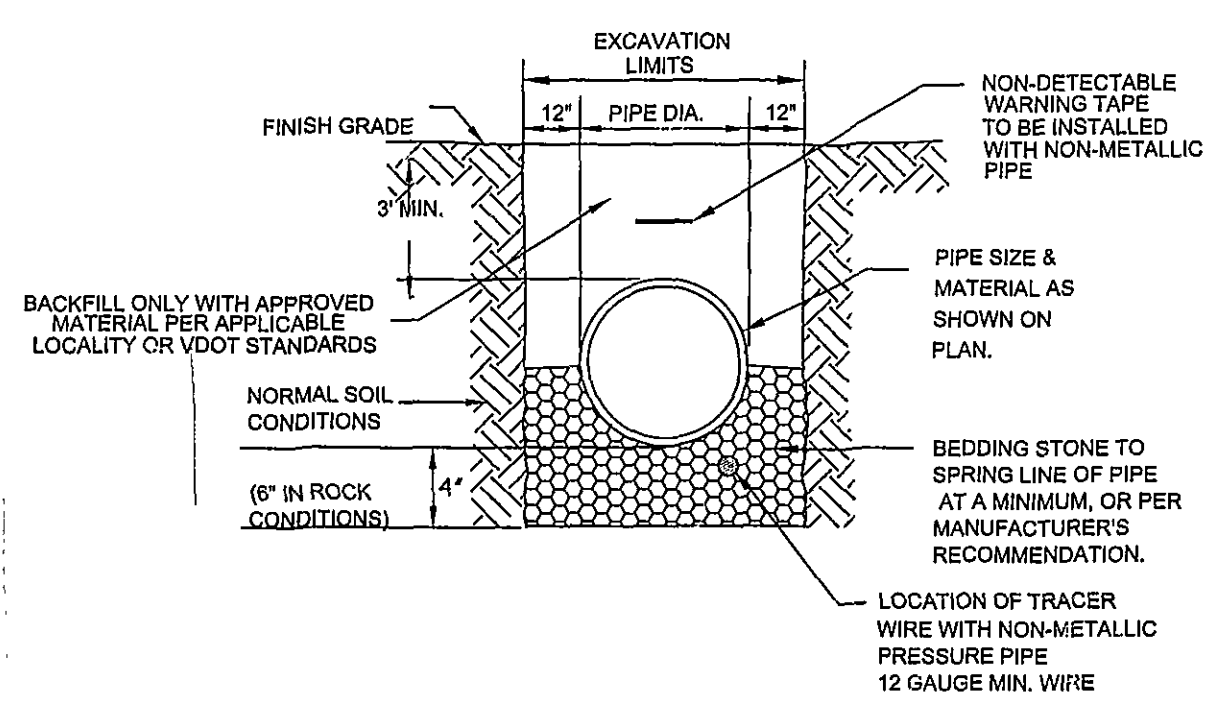


FIRE HYDRANT
ASSEMBLY

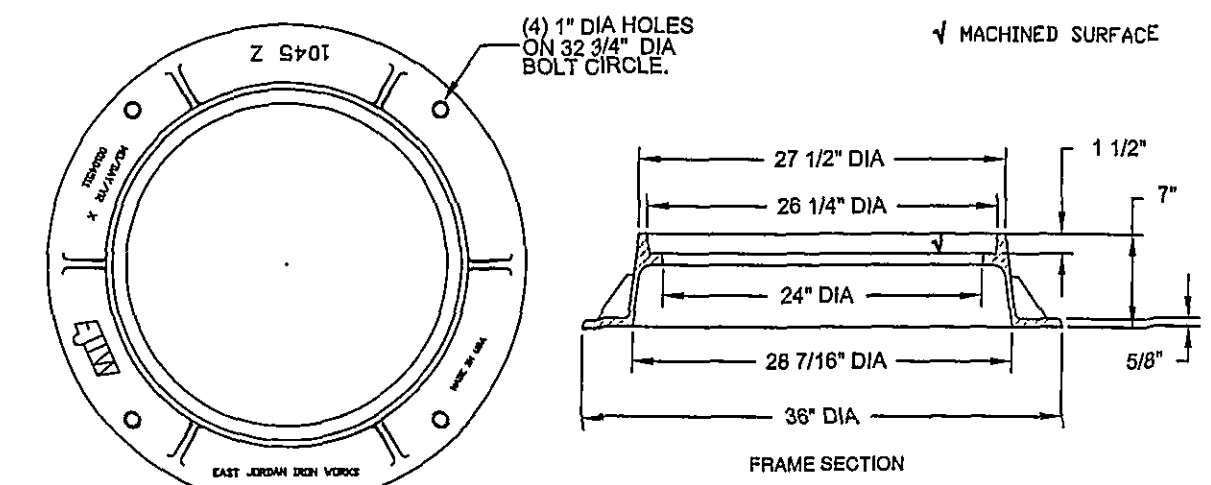


WATER LINE VALVE
INSTALLATION

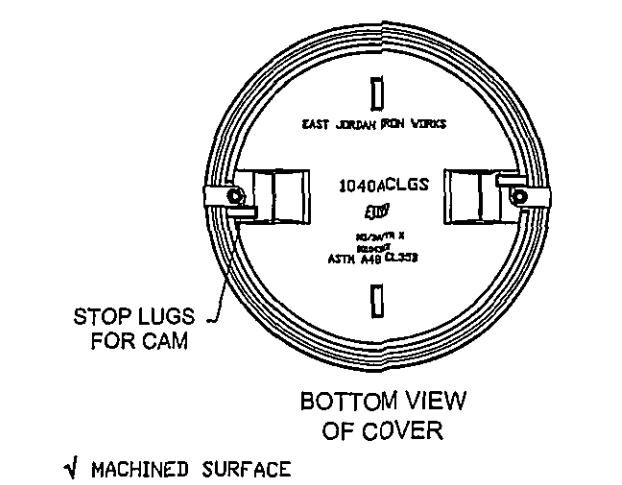
- NOTES:
1. BEDDING, HAUNCHING AND INITIAL BACKFILL CONSTRUCTION SHALL BE IN ACCORDANCE WITH MANUFACTURER'S RECOMMENDATION.
 2. WHEN INSTALLING NON-METALLIC PIPE, NON-DETECTABLE WARNING TAPE SHALL BE BURIED AT A MINIMUM 6" BELOW GRADE AND APPROXIMATELY 12" TO 18" ABOVE NON-METALLIC PIPE. IT SHALL BE 3 TO 5 MILS IN THICKNESS AND INSTALLED CONTINUOUS FROM VALVE BOX TO VALVE BOX OR MANHOLE TO MANHOLE.
 3. ALL PVC PIPE SHALL BE BEDDED IN COMPACTED GRANULAR MATERIAL WHICH SHALL BE CRUSHED STONE MEETING VDOT STANDARDS FOR GRADUATION 67 OR 68 STONE.
 4. IN AREAS NOT SUBJECTED TO VEHICULAR TRAFFIC, BEDDING STONE AND FILL SHALL BE PLACED IN 10" LIFTS AND SHALL BE COMPACTED TO AT LEAST 90% OF MAXIMUM DENSITY AS DETERMINED BY ASTM D 698.
 5. ALL SEWER LINE PIPE SHALL BE BEDDED IN COMPACTED GRANULAR MATERIAL. BEDDING REQUIREMENTS FOR DUCTILE WATER LINE ARE DEPENDENT ON MANUFACTURER'S BEDDING CRITERIA.



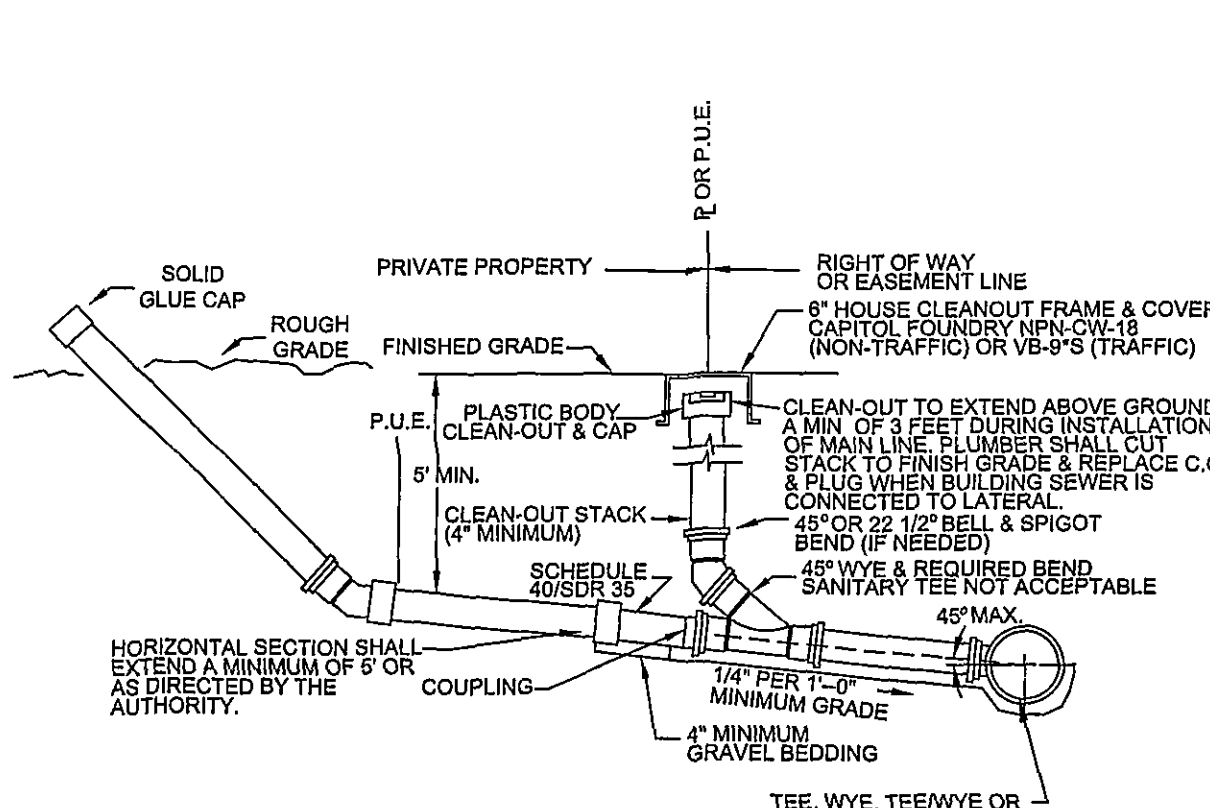
BEDDING AND BACKFILL
OUTSIDE OF PAVED AREAS



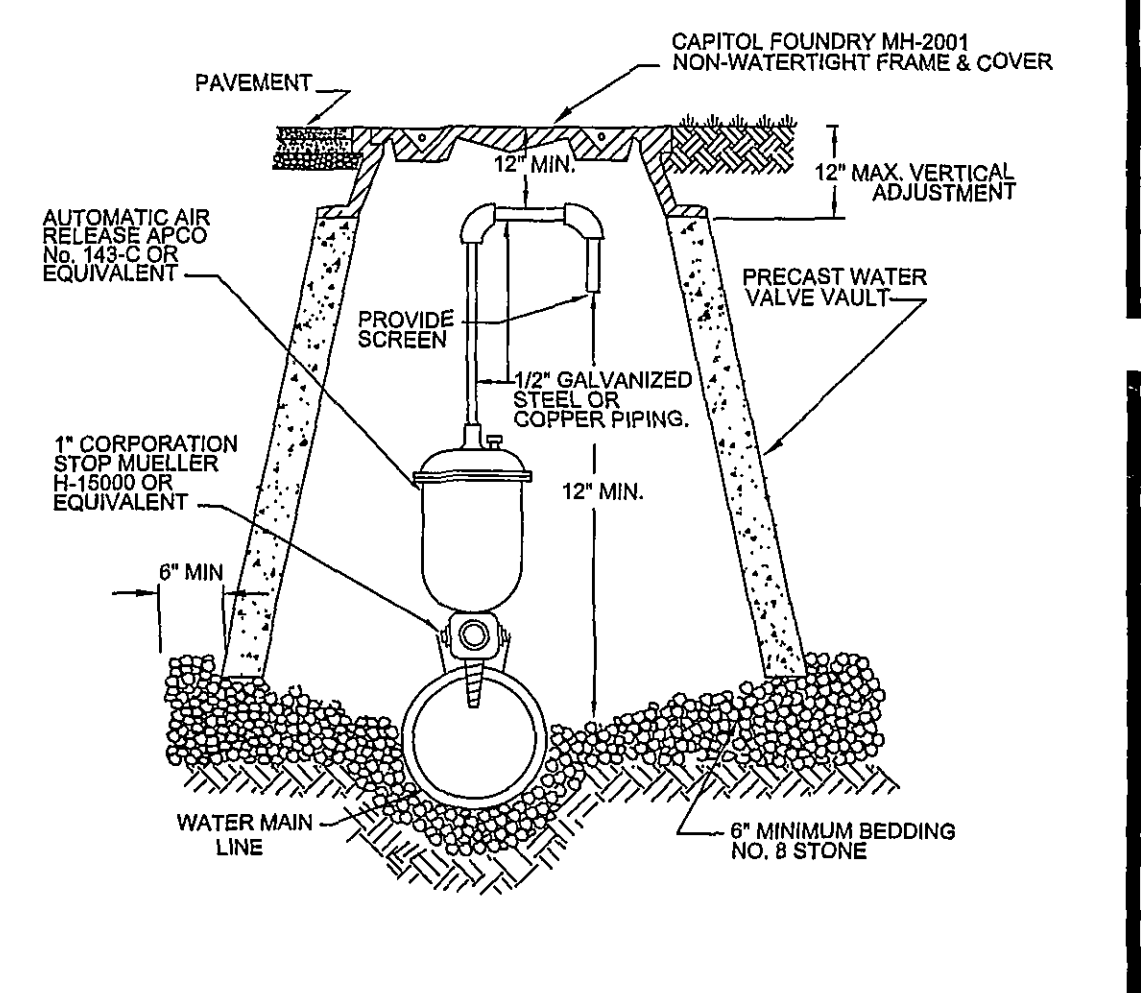
WATERTIGHT
MANHOLE FRAME



WATERTIGHT
MANHOLE COVER



SANITARY SEWER LATERAL



AUTOMATIC AIR
RELEASE ASSEMBLY

- NOTES:
1. BOLT-DOWN MANHOLE COVER MODEL #1040ACLS BY EAST JORDAN IRON WORKS, INC. OR EQUIVALENT.
 2. BOLT-DOWN MANHOLE COVERS TO BE USED IN AREAS SUBJECT TO FLOODING, SUCH AS ALONG STREAM OR CREEK BANKS, OR AS DIRECTED BY THE AUTHORITY.

BOLT-DOWN MANHOLE COVER