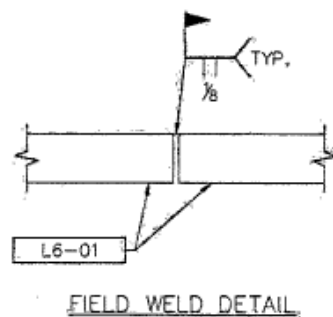
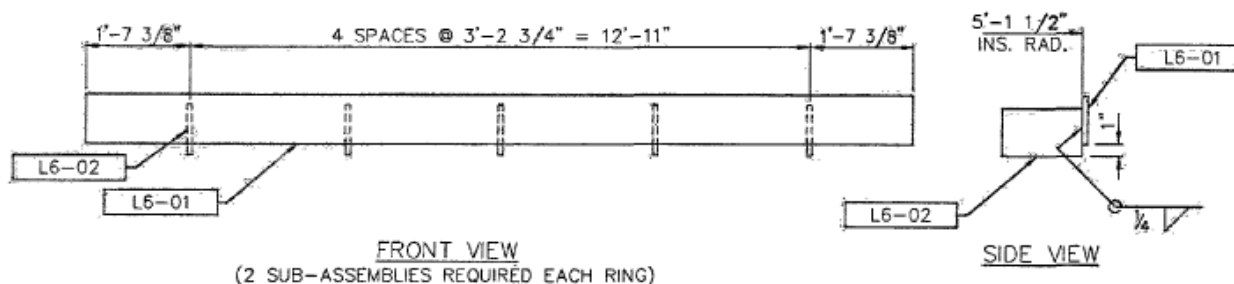


SHIPPING ITEM	QTY.	PC. MK.	QTY.	MATERIAL REQ'D.	DESCRIPTION	UNIT WT.
L6-UR-09	2			EXTERIOR UTILITY RING		100
		L6-01	1	FB 3/8" x 4" x 16'-1 3/4" LG.	RING	
		L6-02	5	FB 3/8" x 4" x 7" LG.	RING BRACE	



**AS BUILT**

**NOTES:**

1. MAXIMUM WORKING LOAD = 500 LBS. (CONDITIONAL\*)
2. COMPLETE INSPECTION SHALL BE PERFORMED PRIOR TO USE OF RING. IN THE EVENT ANY TYPE OF DAMAGE HAS OCCURRED TO THE RING, SUPPORTS, OR CONNECTIONS, USE OF SAME SHALL BE PROHIBITED.



TITLE: EXTERIOR UTILITY RING FOR 9'-1" DIA. PEDESTAL/RISER

DRAWING NO.: L6