

w:\drawings\1995\195359\eng\195359comp.dwg 9/5/95 9:59am 195359comp.dwg 12/1/01

EROSION & SEDIMENT CONTROL MEASURES (ALSO SEE SHEET 6 OF 14)

PROJECT DESCRIPTION:
THIS PROJECT IS LOCATED OFF COTTON HILL ROAD IN ROANOKE COUNTY, APPROXIMATELY 14.8 ACRES OF LAND WILL BE DISTURBED WITH THIS PROJECT.
THIS PROJECT CONSISTS OF GRADING FOR A FUTURE SUBDIVISION INCLUDING ROAD AND LOT GRADING. SOME STORM DRAIN WILL ALSO BE INSTALLED TO MANAGE DRAINAGE.

EXISTING SITE CONDITIONS:
THE SITE IS SLIGHTLY SLOPED AND DRAINS TO TWO NATURAL WATERCOURSES CROSSING THE SITE TO THE NORTH.

ADJACENT AREAS:
COTTON HILL ROAD BORDERS THE SITE TO THE NORTH AND WEST. THE AREAS TO THE WEST OF THE SITE ARE LARGE RESIDENTIAL TRACTS. THE PROPERTIES TO THE SOUTH OF THE SITE ARE LARGE RESIDENTIAL TRACTS AND BLUE RIDGE PARKWAY.

OFF-SITE AREAS:
NO OFF-SITE BORROW OR FILL SITES ARE EXPECTED TO BE ASSOCIATED WITH THIS PROJECT.

SOILS:

170	EMVAD FINE SANDY LOAM, 7 TO 10% SLOPES	SHRUB-SHELL
SYMBOL	EROSION POTENTIAL	PERMEABILITY
170	HIGH	MODERATE
SOIL LAYER COMPOSITION		
SURFACE LAYER:	0 TO 3 INCHES, DARK BROWN FINE SANDY LOAM	
SUBSURFACE LAYER:	3 TO 5 INCHES, YELLOWISH BROWN FINE SANDY LOAM	
SUBSOIL:	5 TO 12 INCHES, STRONG BROWN SANDY CLAY LOAM	
	15 TO 31 INCHES, YELLOWISH BROWN SANDY CLAY LOAM	
	31 TO 44 INCHES, RED, YELLOWISH RED, AND VERY PALE BROWN SANDY CLAY LOAM	
	44 TO 80 INCHES, STRONG BROWN SAPROLITE THAT CRUMBLES TO SANDY LOAM	

170	EMVAD FINE SANDY LOAM, 15 TO 20% SLOPES	SHRUB-SHELL
SYMBOL	EROSION POTENTIAL	PERMEABILITY
170	HIGH	MODERATE
SOIL LAYER COMPOSITION		
SURFACE LAYER:	0 TO 3 INCHES, DARK BROWN FINE SANDY LOAM	
SUBSURFACE LAYER:	3 TO 5 INCHES, YELLOWISH BROWN FINE SANDY LOAM	
SUBSOIL:	5 TO 12 INCHES, STRONG BROWN SANDY CLAY LOAM	
	15 TO 31 INCHES, YELLOWISH BROWN SANDY CLAY LOAM	
	31 TO 44 INCHES, RED, YELLOWISH RED, AND VERY PALE BROWN SANDY CLAY LOAM	
	44 TO 80 INCHES, STRONG BROWN SAPROLITE THAT CRUMBLES TO SANDY LOAM	

260	HAVERHILL FINE SANDY LOAM, 7 TO 10% SLOPES	SHRUB-SHELL
SYMBOL	EROSION POTENTIAL	PERMEABILITY
260	HIGH	MODERATE
SOIL LAYER COMPOSITION		
SURFACE LAYER:	0 TO 4 INCHES, DARK BROWN FINE SANDY LOAM	
SUBSURFACE LAYER:	4 TO 8 INCHES, BROWN FINE SANDY LOAM	
SUBSOIL:	8 TO 15 INCHES, STRONG BROWN LOAM	
	15 TO 24 INCHES, YELLOWISH RED CLAY LOAM	
	24 TO 43 INCHES, RED CLAY	
	43 TO 61 INCHES, RED AND YELLOWISH RED CLAY LOAM	
	61 TO 81 INCHES, RED, BROWNISH YELLOW, AND WHITE SANDY CLAY LOAM	

CERTAIN AREAS:
IT IS CRITICAL THAT THE EROSION AND SEDIMENT CONTROL MEASURES BE MAINTAINED TO PREVENT ANY SEDIMENT FROM REACHING THE ADJACENT STREAMS AND ACROSS COTTON HILL ROAD.

GENERAL STANDARDS:
ALL EROSION AND SEDIMENT CONTROL PRACTICES AND PROCEDURES SHALL BE IN ACCORDANCE WITH THE LATEST EDITION OF THE VIRGINIA EROSION AND SEDIMENT CONTROL HANDBOOK.

MINIMUM STANDARDS:
SEE DEVS MINIMUM STANDARDS LISTED ON THE ROANOKE COUNTY DETAIL SHEET.

EROSION AND SEDIMENT CONTROL MEASURES:

STANDARD AND SPECIFICATION 3.02 - CONSTRUCTION ENTRANCE (CE):
A TEMPORARY CONSTRUCTION ENTRANCE SHALL BE INSTALLED WHERE THE CONSTRUCTION ACCESS ROAD LEAVES EXISTING PAVEMENT. DURING WET WEATHER CONDITIONS, DRIVERS OF CONSTRUCTION VEHICLES WILL BE REQUIRED TO WASH THEIR WHEELS BEFORE ENTERING THE STREET. WHEN CONSTRUCTION VEHICLES MUST ENTER DISTURBED AREAS, THE TIRES OF THE VEHICLE SHALL BE MANUALLY CLEANED PRIOR TO LEAVING THE SITE, IF NECESSARY.

STANDARD AND SPECIFICATION 3.03 - CONSTRUCTION ROAD STABILIZATION (CRS):
CONSTRUCTION ROAD STABILIZATION IS TO BE INSTALLED AS SOON AS ROAD SUBGRADES ARE ESTABLISHED IN ORDER TO REDUCE EROSION AND PREVENT REBOUND OF ROAD BEDS.

STANDARD AND SPECIFICATION 3.04 - SILT FENCE (SF):
SILT FENCE SHALL BE INSTALLED AT THE LOWER EDGE OF DISTURBED AREAS AS SHOWN ON THE PLAN. TWO TYPES OF SILT FENCE ARE SHOWN ON THE PLAN IN ACCORDANCE WITH MOST STANDARDS. THE TALLER FENCE IS SPECIFIED AS SILT FENCE, "SF". A SHORTER FENCE IS SPECIFIED AS FILTER BARRIER, "FB".

STANDARD AND SPECIFICATION 3.07 - STORMWATER CONVEYANCE CHANNEL (SCC):
STORMWATER CONVEYANCE CHANNELS SHALL BE INSTALLED AS SHOWN ON THE PLAN.

STANDARD AND SPECIFICATION 3.08 - OUTLET PROTECTION (OP):
OUTLET PROTECTION SHALL BE INSTALLED AS SHOWN ON THE PLAN.

STANDARD AND SPECIFICATION 3.09 - GRAVEL CHECK DAM (CD):
GRAVEL CHECK DAMS SHALL BE INSTALLED TO MINIMIZE SEDIMENT LAUNCH RUNOFF FROM EXISTING THE SITE.

STANDARD AND SPECIFICATION 3.10 - TOPSOILING (TS):
TOPSOIL SHALL BE STRIPPED FROM AREAS TO BE GRADED AND STOCKPILED FOR FUTURE USE. TOPSOIL STOCKPILES SHALL BE PROTECTED BY SILT FENCE INSTALLED ALONG THE DOWNHILL SLOES AROUND THE STOCKPILE. TOPSOIL SHALL BE UNIFORMLY SPREAD OVER DISTURBED AREAS PRIOR TO PERMANENT SEEDING.

STANDARD AND SPECIFICATION 3.11 - TEMPORARY SEEDING MIXTURE (TS):
THE TEMPORARY SEEDING MIXTURE SHALL BE APPLIED TO ALL AREAS TO BE GRADED, BUT NOT FINISH GRADED DURING THE INITIAL PHASE OF CONSTRUCTION. SHALL BE SEEDING WITH FAST GERMINATING, TEMPORARY VEGETATION IMMEDIATELY FOLLOWING GRADING, OR INSTALLATION OF A TEMPORARY MEASURE. SEE ALSO MINIMUM STANDARDS.

STANDARD AND SPECIFICATION 3.12 - PERMANENT SEEDING MIXTURE (PS):
PERMANENT SEEDING SHALL BE INSTALLED ON ALL DISTURBED AREAS OF THE SITE NOT OTHERWISE STABILIZED.

STANDARD AND SPECIFICATION 3.13 - MULCHING (MU):
ALL DISTURBED AREAS SHALL BE INSTALLED WITH MULCHING. STRAW MULCH SHALL BE APPLIED AT A RATE OF TWO TONS PER ACRE AND ANCHORED WITH 700 LBS PER ACRE OF FIBER MULCH OVER THE SEEDING AREA.

MAINTENANCE:
ALL EROSION AND SEDIMENT CONTROL MEASURES SHALL BE INSPECTED WEEKLY AND AFTER EVERY RUNOFF PRODUCING RAINFALL. A LOG OF DATES AND INSPECTIONS SHALL BE KEPT. ANY DEFICIENCIES THAT ARE FOUND SHALL BE CORRECTED IMMEDIATELY. ACCUMULATED SEDIMENT AT DOWNHILL MEASURES SHALL BE REMOVED.

ALL OTHERS: SHALLS, AND NATURAL WATERCOURSES DOWNSTREAM OF THIS PROJECT SHALL BE FIELD INSPECTED DURING AND AFTER CONSTRUCTION BY THE RD TO ENSURE COMPLIANCE WITH DOTS MS-16. IF EROSION OR SCOUR IS OCCURRING THE DEVELOPER SHALL BE RESPONSIBLE FOR ALL CORRECTIVE MEASURES.

THE OWNER'S INSPECTOR SHALL INSPECT STATE WATERS ADJACENT TO PERMETER CONTROLS DURING EACH INSPECTION. MAINTENANCE MEASURES SHALL BE IMPLEMENTED IMMEDIATELY BASED ON INSPECTION RESULTS.

EROSION AND SEDIMENT CONTROL MEASURES SHALL BE MAINTAINED UNTIL AFTER ALL DISTURBED AREAS HAVE BEEN PERMANENTLY STABILIZED AND THEN TEMPORARY MEASURES PROPERLY REMOVED.

STORM WATER MANAGEMENT CONSIDERATION:
THIS PLAN ONLY SHOWS GRADING FOR FUTURE DEVELOPMENT OF A SUBDIVISION. FUTURE PLANS WILL INDICATE NEW IMPERVIOUS AREAS. WHILE CHARACTER OF THE SURFACES WITHIN THE DRAINAGE SHEDS WILL NOT RESULT IN A SIGNIFICANT INCREASE IN RUNOFF, DRAINAGE PATTERNS HAVE CHANGED. CALCULATIONS HAVE BEEN COMPLETED TO ENSURE COMPLIANCE WITH MS-16.

20-1: UNDER OVERSIGHT MEASURES, ALL VERTICINE AND STRUCTURAL EROSION AND SEDIMENT CONTROL PRACTICES SHALL BE CONSTRUCTED AND MAINTAINED ACCORDING TO MINIMUM GRADING AND SPECIFICATIONS OF THE VIRGINIA EROSION AND SEDIMENT CONTROL HANDBOOK AND MINIMUM REGULATIONS IN 905-40-40 EROSION AND SEDIMENT CONTROL REGULATIONS.

20-2: THE PLAN APPROVAL AUTHORITY MUST BE NOTIFIED ONE WEEK PRIOR TO THE ONSET OF CONSTRUCTION. CONSTRUCTION OF ONE WEEK PRIOR TO THE COMPLETION OF LAND DISTURBANCE ACTS, AND ONE WEEK PRIOR TO THE FINAL INSPECTION.

20-3: ALL EROSION AND SEDIMENT CONTROL MEASURES ARE TO BE PLACED PRIOR TO OR AS THE FIRST STEP IN CONSTRUCTION.

20-4: A COPY OF THE APPROVED EROSION AND SEDIMENT CONTROL PLAN AND MAINTENANCE AS WELL AS A COPY OF THE LAND DISTURBANCE ACTS SHALL BE MAINTAINED ON THE SITE AT ALL TIMES DURING THE CONSTRUCTION AND MAINTENANCE PHASES OF THE PROJECT.

20-5: PRIOR TO CONSTRUCTION AND MAINTENANCE OF THE LAND DISTURBANCE ACTS, THE CONTRACTOR SHALL SUBMIT A SUPPLEMENTARY EROSION CONTROL PLAN TO THE OTHER FOR REVIEW AND APPROVAL BY THE PLAN APPROVAL AUTHORITY.

20-6: THE CONTRACTOR IS RESPONSIBLE FOR INSTALLATION OF ANY ADDITIONAL EROSION CONTROL MEASURES NECESSARY TO PREVENT EROSION AND MAINTENANCE AS WELL AS A COPY OF THE LAND DISTURBANCE ACTS SHALL BE MAINTAINED ON THE SITE AT ALL TIMES DURING THE CONSTRUCTION AND MAINTENANCE PHASES OF THE PROJECT.

20-7: ALL DISTURBED AREAS ARE TO BE GRADED TO APPROVED SEDIMENT CONTROL MEASURES AT ALL TIMES DURING THE CONSTRUCTION AND MAINTENANCE PHASES OF THE PROJECT. THE CONTRACTOR SHALL SUBMIT A SUPPLEMENTARY EROSION CONTROL PLAN TO THE OTHER FOR REVIEW AND APPROVAL BY THE PLAN APPROVAL AUTHORITY.

20-8: DURING CONSTRUCTION OPERATIONS, WATER SHALL BE PUMPED INTO AN APPROVED FLOODING DEVICE. THE CONTRACTOR SHALL SUBMIT A SUPPLEMENTARY EROSION CONTROL PLAN TO THE OTHER FOR REVIEW AND APPROVAL BY THE PLAN APPROVAL AUTHORITY.

20-9: THE CONTRACTOR SHALL SUBMIT A SUPPLEMENTARY EROSION CONTROL PLAN TO THE OTHER FOR REVIEW AND APPROVAL BY THE PLAN APPROVAL AUTHORITY.

20-10: THE CONTRACTOR SHALL SUBMIT A SUPPLEMENTARY EROSION CONTROL PLAN TO THE OTHER FOR REVIEW AND APPROVAL BY THE PLAN APPROVAL AUTHORITY.

20-11: THE CONTRACTOR SHALL SUBMIT A SUPPLEMENTARY EROSION CONTROL PLAN TO THE OTHER FOR REVIEW AND APPROVAL BY THE PLAN APPROVAL AUTHORITY.

20-12: THE CONTRACTOR SHALL SUBMIT A SUPPLEMENTARY EROSION CONTROL PLAN TO THE OTHER FOR REVIEW AND APPROVAL BY THE PLAN APPROVAL AUTHORITY.

20-13: THE CONTRACTOR SHALL SUBMIT A SUPPLEMENTARY EROSION CONTROL PLAN TO THE OTHER FOR REVIEW AND APPROVAL BY THE PLAN APPROVAL AUTHORITY.

20-14: THE CONTRACTOR SHALL SUBMIT A SUPPLEMENTARY EROSION CONTROL PLAN TO THE OTHER FOR REVIEW AND APPROVAL BY THE PLAN APPROVAL AUTHORITY.

20-15: THE CONTRACTOR SHALL SUBMIT A SUPPLEMENTARY EROSION CONTROL PLAN TO THE OTHER FOR REVIEW AND APPROVAL BY THE PLAN APPROVAL AUTHORITY.

20-16: THE CONTRACTOR SHALL SUBMIT A SUPPLEMENTARY EROSION CONTROL PLAN TO THE OTHER FOR REVIEW AND APPROVAL BY THE PLAN APPROVAL AUTHORITY.

20-17: THE CONTRACTOR SHALL SUBMIT A SUPPLEMENTARY EROSION CONTROL PLAN TO THE OTHER FOR REVIEW AND APPROVAL BY THE PLAN APPROVAL AUTHORITY.

20-18: THE CONTRACTOR SHALL SUBMIT A SUPPLEMENTARY EROSION CONTROL PLAN TO THE OTHER FOR REVIEW AND APPROVAL BY THE PLAN APPROVAL AUTHORITY.

GENERAL EROSION AND SEDIMENT CONTROL MEASURES

20-1: UNDER OVERSIGHT MEASURES, ALL VERTICINE AND STRUCTURAL EROSION AND SEDIMENT CONTROL PRACTICES SHALL BE CONSTRUCTED AND MAINTAINED ACCORDING TO MINIMUM GRADING AND SPECIFICATIONS OF THE VIRGINIA EROSION AND SEDIMENT CONTROL HANDBOOK AND MINIMUM REGULATIONS IN 905-40-40 EROSION AND SEDIMENT CONTROL REGULATIONS.

20-2: THE PLAN APPROVAL AUTHORITY MUST BE NOTIFIED ONE WEEK PRIOR TO THE ONSET OF CONSTRUCTION. CONSTRUCTION OF ONE WEEK PRIOR TO THE COMPLETION OF LAND DISTURBANCE ACTS, AND ONE WEEK PRIOR TO THE FINAL INSPECTION.

20-3: ALL EROSION AND SEDIMENT CONTROL MEASURES ARE TO BE PLACED PRIOR TO OR AS THE FIRST STEP IN CONSTRUCTION.

20-4: A COPY OF THE APPROVED EROSION AND SEDIMENT CONTROL PLAN AND MAINTENANCE AS WELL AS A COPY OF THE LAND DISTURBANCE ACTS SHALL BE MAINTAINED ON THE SITE AT ALL TIMES DURING THE CONSTRUCTION AND MAINTENANCE PHASES OF THE PROJECT.

20-5: PRIOR TO CONSTRUCTION AND MAINTENANCE OF THE LAND DISTURBANCE ACTS, THE CONTRACTOR SHALL SUBMIT A SUPPLEMENTARY EROSION CONTROL PLAN TO THE OTHER FOR REVIEW AND APPROVAL BY THE PLAN APPROVAL AUTHORITY.

20-6: THE CONTRACTOR IS RESPONSIBLE FOR INSTALLATION OF ANY ADDITIONAL EROSION CONTROL MEASURES NECESSARY TO PREVENT EROSION AND MAINTENANCE AS WELL AS A COPY OF THE LAND DISTURBANCE ACTS SHALL BE MAINTAINED ON THE SITE AT ALL TIMES DURING THE CONSTRUCTION AND MAINTENANCE PHASES OF THE PROJECT.

20-7: ALL DISTURBED AREAS ARE TO BE GRADED TO APPROVED SEDIMENT CONTROL MEASURES AT ALL TIMES DURING THE CONSTRUCTION AND MAINTENANCE PHASES OF THE PROJECT. THE CONTRACTOR SHALL SUBMIT A SUPPLEMENTARY EROSION CONTROL PLAN TO THE OTHER FOR REVIEW AND APPROVAL BY THE PLAN APPROVAL AUTHORITY.

20-8: DURING CONSTRUCTION OPERATIONS, WATER SHALL BE PUMPED INTO AN APPROVED FLOODING DEVICE. THE CONTRACTOR SHALL SUBMIT A SUPPLEMENTARY EROSION CONTROL PLAN TO THE OTHER FOR REVIEW AND APPROVAL BY THE PLAN APPROVAL AUTHORITY.

20-9: THE CONTRACTOR SHALL SUBMIT A SUPPLEMENTARY EROSION CONTROL PLAN TO THE OTHER FOR REVIEW AND APPROVAL BY THE PLAN APPROVAL AUTHORITY.

20-10: THE CONTRACTOR SHALL SUBMIT A SUPPLEMENTARY EROSION CONTROL PLAN TO THE OTHER FOR REVIEW AND APPROVAL BY THE PLAN APPROVAL AUTHORITY.

20-11: THE CONTRACTOR SHALL SUBMIT A SUPPLEMENTARY EROSION CONTROL PLAN TO THE OTHER FOR REVIEW AND APPROVAL BY THE PLAN APPROVAL AUTHORITY.

20-12: THE CONTRACTOR SHALL SUBMIT A SUPPLEMENTARY EROSION CONTROL PLAN TO THE OTHER FOR REVIEW AND APPROVAL BY THE PLAN APPROVAL AUTHORITY.

20-13: THE CONTRACTOR SHALL SUBMIT A SUPPLEMENTARY EROSION CONTROL PLAN TO THE OTHER FOR REVIEW AND APPROVAL BY THE PLAN APPROVAL AUTHORITY.

20-14: THE CONTRACTOR SHALL SUBMIT A SUPPLEMENTARY EROSION CONTROL PLAN TO THE OTHER FOR REVIEW AND APPROVAL BY THE PLAN APPROVAL AUTHORITY.

20-15: THE CONTRACTOR SHALL SUBMIT A SUPPLEMENTARY EROSION CONTROL PLAN TO THE OTHER FOR REVIEW AND APPROVAL BY THE PLAN APPROVAL AUTHORITY.

20-16: THE CONTRACTOR SHALL SUBMIT A SUPPLEMENTARY EROSION CONTROL PLAN TO THE OTHER FOR REVIEW AND APPROVAL BY THE PLAN APPROVAL AUTHORITY.

20-17: THE CONTRACTOR SHALL SUBMIT A SUPPLEMENTARY EROSION CONTROL PLAN TO THE OTHER FOR REVIEW AND APPROVAL BY THE PLAN APPROVAL AUTHORITY.

20-18: THE CONTRACTOR SHALL SUBMIT A SUPPLEMENTARY EROSION CONTROL PLAN TO THE OTHER FOR REVIEW AND APPROVAL BY THE PLAN APPROVAL AUTHORITY.

20-19: THE CONTRACTOR SHALL SUBMIT A SUPPLEMENTARY EROSION CONTROL PLAN TO THE OTHER FOR REVIEW AND APPROVAL BY THE PLAN APPROVAL AUTHORITY.

20-20: THE CONTRACTOR SHALL SUBMIT A SUPPLEMENTARY EROSION CONTROL PLAN TO THE OTHER FOR REVIEW AND APPROVAL BY THE PLAN APPROVAL AUTHORITY.

20-21: THE CONTRACTOR SHALL SUBMIT A SUPPLEMENTARY EROSION CONTROL PLAN TO THE OTHER FOR REVIEW AND APPROVAL BY THE PLAN APPROVAL AUTHORITY.

20-22: THE CONTRACTOR SHALL SUBMIT A SUPPLEMENTARY EROSION CONTROL PLAN TO THE OTHER FOR REVIEW AND APPROVAL BY THE PLAN APPROVAL AUTHORITY.

20-23: THE CONTRACTOR SHALL SUBMIT A SUPPLEMENTARY EROSION CONTROL PLAN TO THE OTHER FOR REVIEW AND APPROVAL BY THE PLAN APPROVAL AUTHORITY.

20-24: THE CONTRACTOR SHALL SUBMIT A SUPPLEMENTARY EROSION CONTROL PLAN TO THE OTHER FOR REVIEW AND APPROVAL BY THE PLAN APPROVAL AUTHORITY.

20-25: THE CONTRACTOR SHALL SUBMIT A SUPPLEMENTARY EROSION CONTROL PLAN TO THE OTHER FOR REVIEW AND APPROVAL BY THE PLAN APPROVAL AUTHORITY.

20-26: THE CONTRACTOR SHALL SUBMIT A SUPPLEMENTARY EROSION CONTROL PLAN TO THE OTHER FOR REVIEW AND APPROVAL BY THE PLAN APPROVAL AUTHORITY.

20-27: THE CONTRACTOR SHALL SUBMIT A SUPPLEMENTARY EROSION CONTROL PLAN TO THE OTHER FOR REVIEW AND APPROVAL BY THE PLAN APPROVAL AUTHORITY.

20-28: THE CONTRACTOR SHALL SUBMIT A SUPPLEMENTARY EROSION CONTROL PLAN TO THE OTHER FOR REVIEW AND APPROVAL BY THE PLAN APPROVAL AUTHORITY.

20-29: THE CONTRACTOR SHALL SUBMIT A SUPPLEMENTARY EROSION CONTROL PLAN TO THE OTHER FOR REVIEW AND APPROVAL BY THE PLAN APPROVAL AUTHORITY.

20-30: THE CONTRACTOR SHALL SUBMIT A SUPPLEMENTARY EROSION CONTROL PLAN TO THE OTHER FOR REVIEW AND APPROVAL BY THE PLAN APPROVAL AUTHORITY.

20-31: THE CONTRACTOR SHALL SUBMIT A SUPPLEMENTARY EROSION CONTROL PLAN TO THE OTHER FOR REVIEW AND APPROVAL BY THE PLAN APPROVAL AUTHORITY.

20-32: THE CONTRACTOR SHALL SUBMIT A SUPPLEMENTARY EROSION CONTROL PLAN TO THE OTHER FOR REVIEW AND APPROVAL BY THE PLAN APPROVAL AUTHORITY.

20-33: THE CONTRACTOR SHALL SUBMIT A SUPPLEMENTARY EROSION CONTROL PLAN TO THE OTHER FOR REVIEW AND APPROVAL BY THE PLAN APPROVAL AUTHORITY.

20-34: THE CONTRACTOR SHALL SUBMIT A SUPPLEMENTARY EROSION CONTROL PLAN TO THE OTHER FOR REVIEW AND APPROVAL BY THE PLAN APPROVAL AUTHORITY.

20-35: THE CONTRACTOR SHALL SUBMIT A SUPPLEMENTARY EROSION CONTROL PLAN TO THE OTHER FOR REVIEW AND APPROVAL BY THE PLAN APPROVAL AUTHORITY.

20-36: THE CONTRACTOR SHALL SUBMIT A SUPPLEMENTARY EROSION CONTROL PLAN TO THE OTHER FOR REVIEW AND APPROVAL BY THE PLAN APPROVAL AUTHORITY.

20-37: THE CONTRACTOR SHALL SUBMIT A SUPPLEMENTARY EROSION CONTROL PLAN TO THE OTHER FOR REVIEW AND APPROVAL BY THE PLAN APPROVAL AUTHORITY.

20-38: THE CONTRACTOR SHALL SUBMIT A SUPPLEMENTARY EROSION CONTROL PLAN TO THE OTHER FOR REVIEW AND APPROVAL BY THE PLAN APPROVAL AUTHORITY.

20-39: THE CONTRACTOR SHALL SUBMIT A SUPPLEMENTARY EROSION CONTROL PLAN TO THE OTHER FOR REVIEW AND APPROVAL BY THE PLAN APPROVAL AUTHORITY.

20-40: THE CONTRACTOR SHALL SUBMIT A SUPPLEMENTARY EROSION CONTROL PLAN TO THE OTHER FOR REVIEW AND APPROVAL BY THE PLAN APPROVAL AUTHORITY.

20-41: THE CONTRACTOR SHALL SUBMIT A SUPPLEMENTARY EROSION CONTROL PLAN TO THE OTHER FOR REVIEW AND APPROVAL BY THE PLAN APPROVAL AUTHORITY.

20-42: THE CONTRACTOR SHALL SUBMIT A SUPPLEMENTARY EROSION CONTROL PLAN TO THE OTHER FOR REVIEW AND APPROVAL BY THE PLAN APPROVAL AUTHORITY.

20-43: THE CONTRACTOR SHALL SUBMIT A SUPPLEMENTARY EROSION CONTROL PLAN TO THE OTHER FOR REVIEW AND APPROVAL BY THE PLAN APPROVAL AUTHORITY.

20-44: THE CONTRACTOR SHALL SUBMIT A SUPPLEMENTARY EROSION CONTROL PLAN TO THE OTHER FOR REVIEW AND APPROVAL BY THE PLAN APPROVAL AUTHORITY.

20-45: THE CONTRACTOR SHALL SUBMIT A SUPPLEMENTARY EROSION CONTROL PLAN TO THE OTHER FOR REVIEW AND APPROVAL BY THE PLAN APPROVAL AUTHORITY.

20-46: THE CONTRACTOR SHALL SUBMIT A SUPPLEMENTARY EROSION CONTROL PLAN TO THE OTHER FOR REVIEW AND APPROVAL BY THE PLAN APPROVAL AUTHORITY.

20-47: THE CONTRACTOR SHALL SUBMIT A SUPPLEMENTARY EROSION CONTROL PLAN TO THE OTHER FOR REVIEW AND APPROVAL BY THE PLAN APPROVAL AUTHORITY.

20-48: THE CONTRACTOR SHALL SUBMIT A SUPPLEMENTARY EROSION CONTROL PLAN TO THE OTHER FOR REVIEW AND APPROVAL BY THE PLAN APPROVAL AUTHORITY.

20-49: THE CONTRACTOR SHALL SUBMIT A SUPPLEMENTARY EROSION CONTROL PLAN TO THE OTHER FOR REVIEW AND APPROVAL BY THE PLAN APPROVAL AUTHORITY.

20-50: THE CONTRACTOR SHALL SUBMIT A SUPPLEMENTARY EROSION CONTROL PLAN TO THE OTHER FOR REVIEW AND APPROVAL BY THE PLAN APPROVAL AUTHORITY.

20-51: THE CONTRACTOR SHALL SUBMIT A SUPPLEMENTARY EROSION CONTROL PLAN TO THE OTHER FOR REVIEW AND APPROVAL BY THE PLAN APPROVAL AUTHORITY.

20-52: THE CONTRACTOR SHALL SUBMIT A SUPPLEMENTARY EROSION CONTROL PLAN TO THE OTHER FOR REVIEW AND APPROVAL BY THE PLAN APPROVAL AUTHORITY.

20-53: THE CONTRACTOR SHALL SUBMIT A SUPPLEMENTARY EROSION CONTROL PLAN TO THE OTHER FOR REVIEW AND APPROVAL BY THE PLAN APPROVAL AUTHORITY.

20-54: THE CONTRACTOR SHALL SUBMIT A SUPPLEMENTARY EROSION CONTROL PLAN TO THE OTHER FOR REVIEW AND APPROVAL BY THE PLAN APPROVAL AUTHORITY.

20-55: THE CONTRACTOR SHALL SUBMIT A SUPPLEMENTARY EROSION CONTROL PLAN TO THE OTHER FOR REVIEW AND APPROVAL BY THE PLAN APPROVAL AUTHORITY.

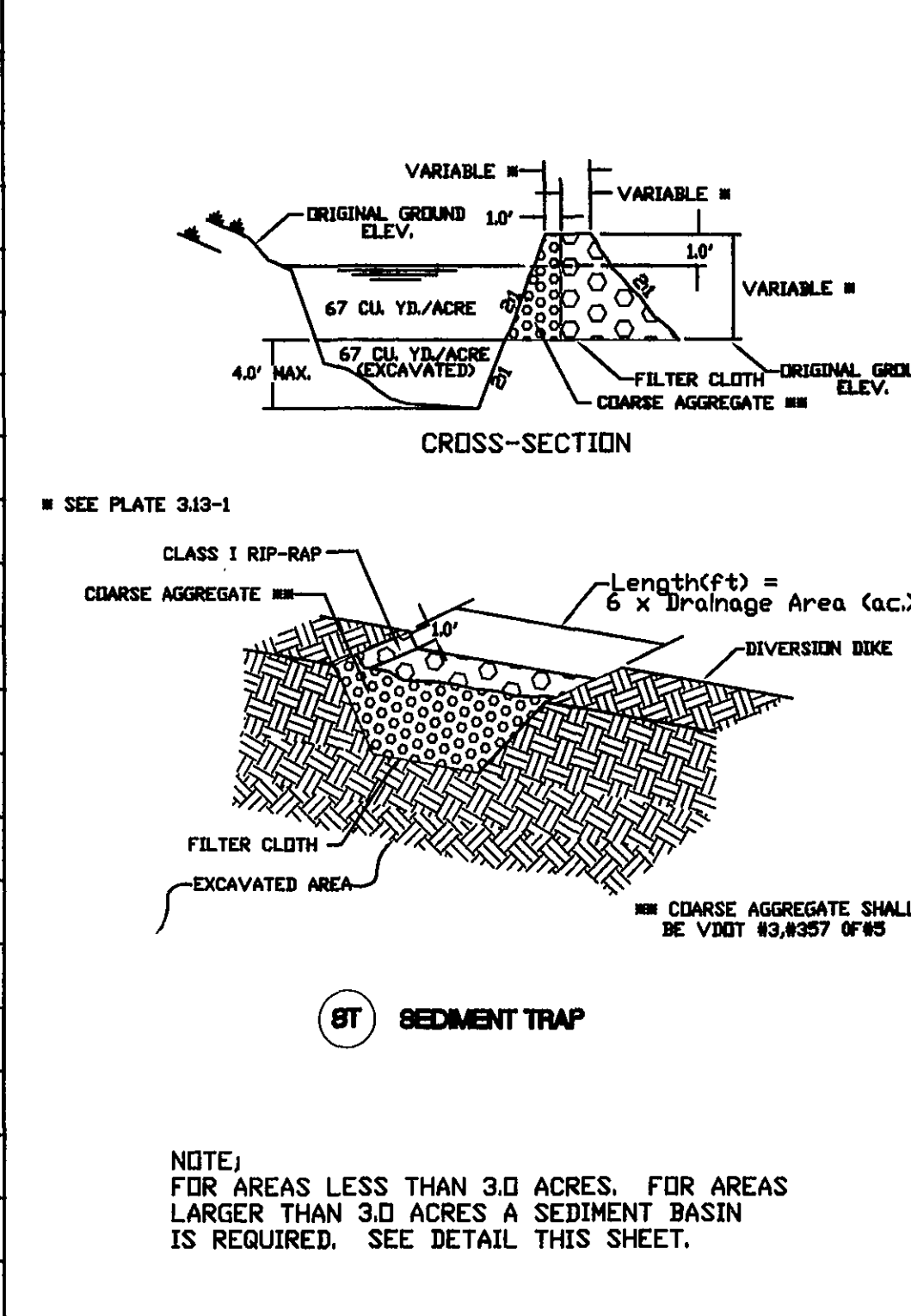
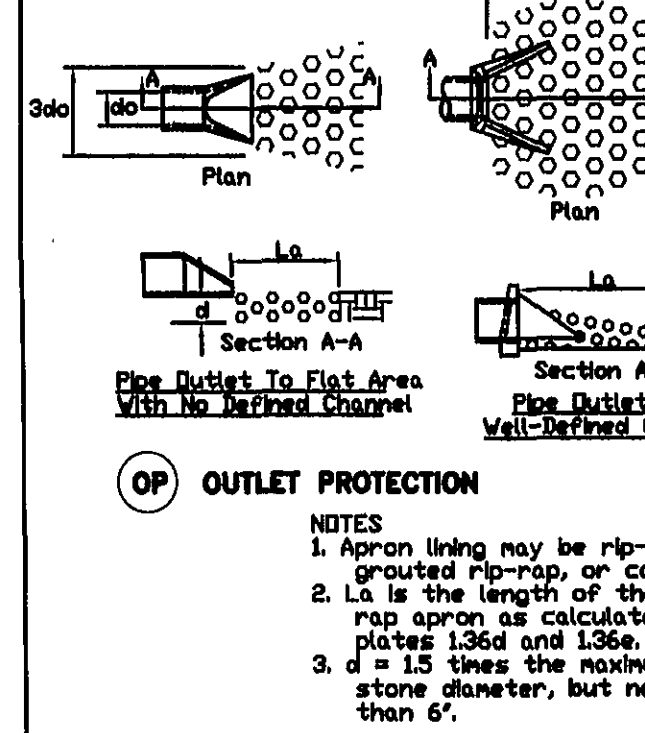
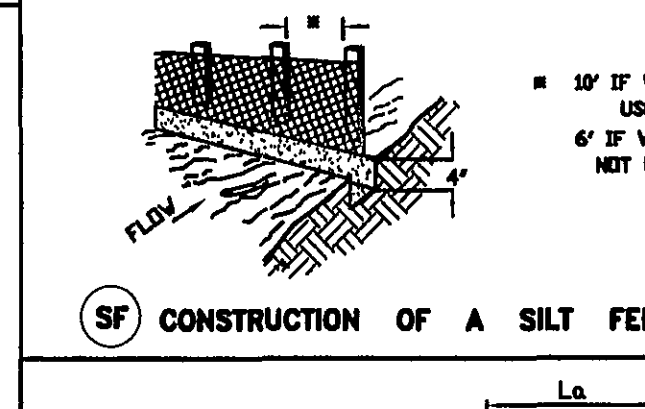
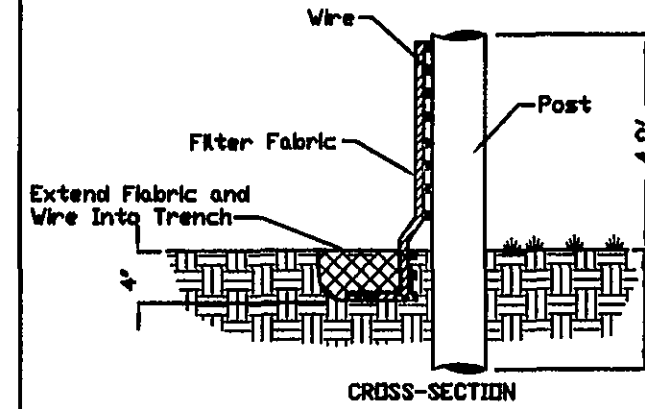
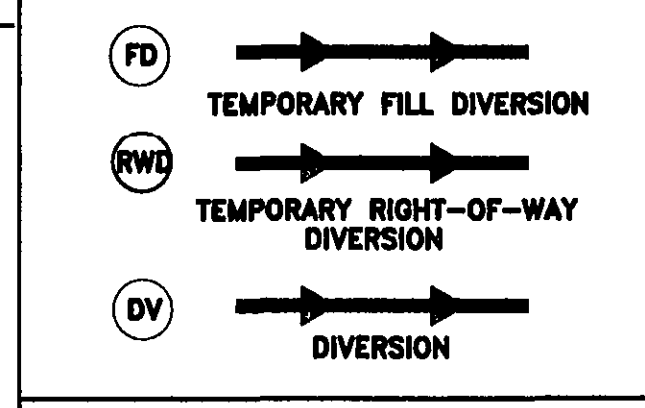
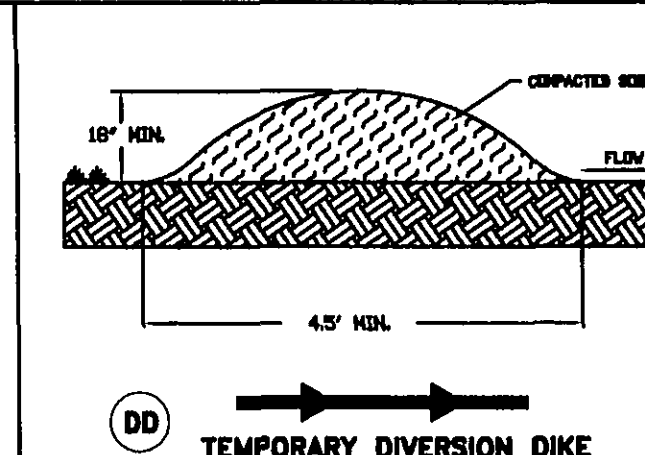
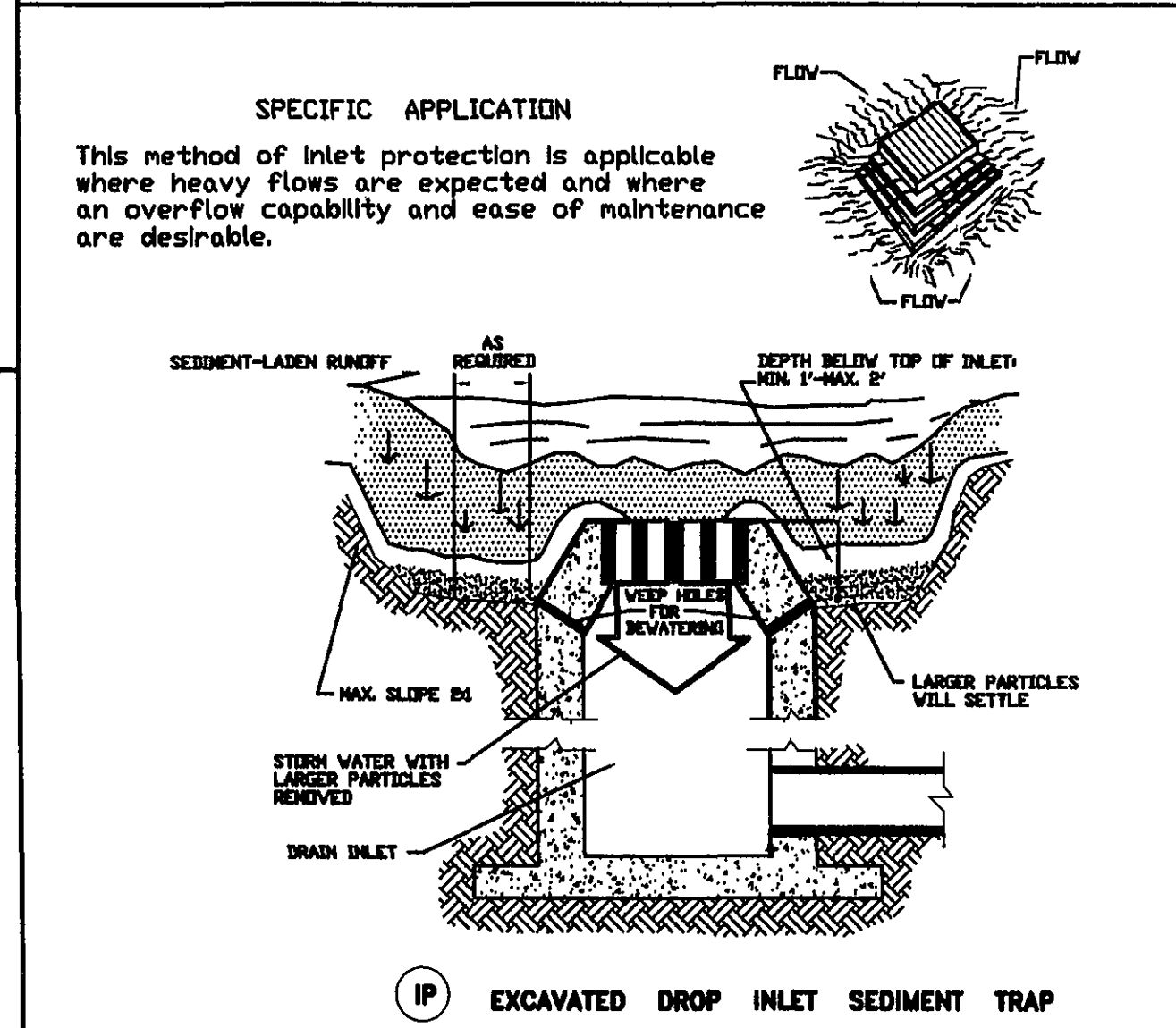
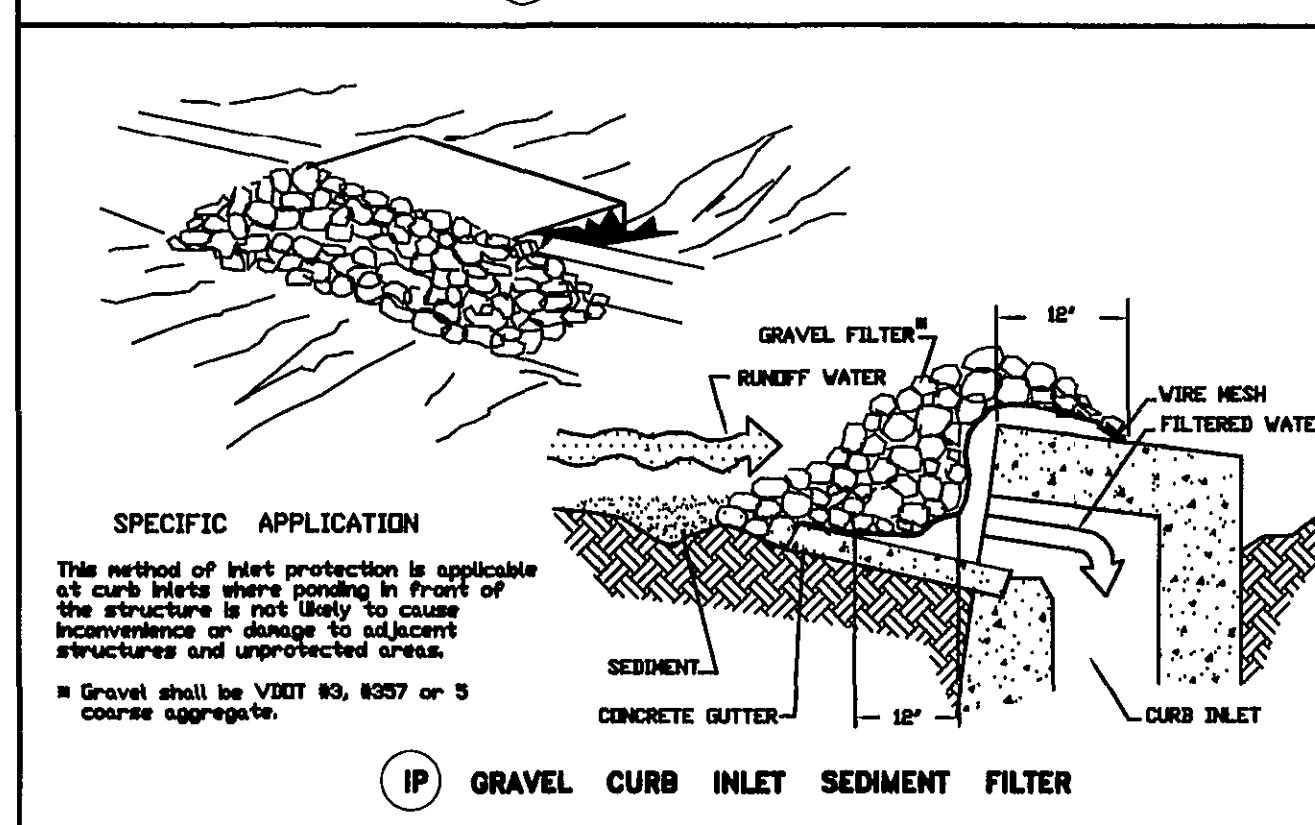
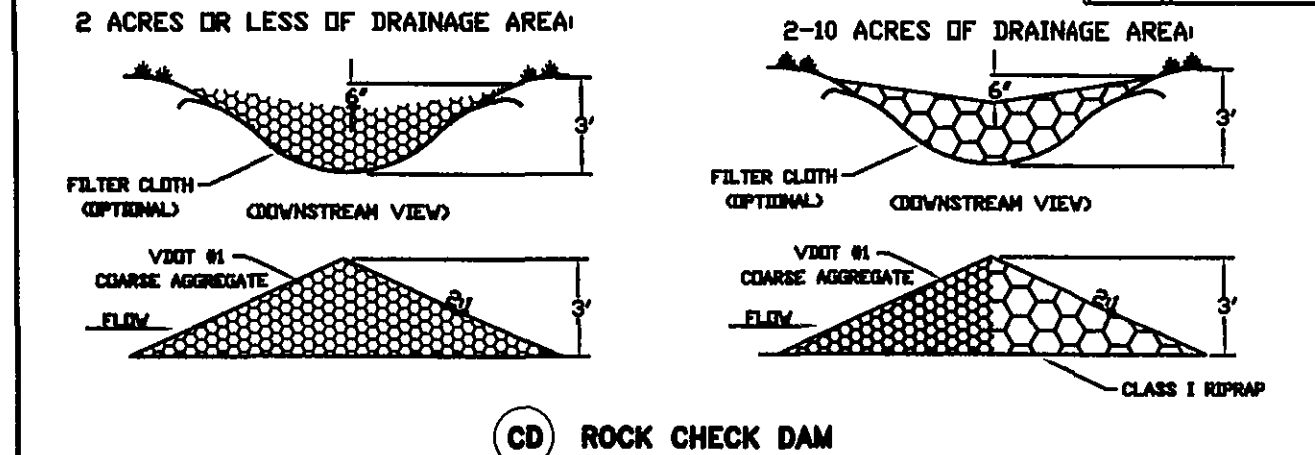
20-56: THE CONTRACTOR SHALL SUBMIT A SUPPLEMENTARY EROSION CONTROL PLAN TO THE OTHER FOR REVIEW AND APPROVAL BY THE PLAN APPROVAL AUTHORITY.

20-57: THE CONTRACTOR SHALL SUBMIT A SUPPLEMENTARY EROSION CONTROL PLAN TO THE OTHER FOR REVIEW AND APPROVAL BY THE PLAN APPROVAL AUTHORITY.

20-58: THE CONTRACTOR SHALL SUBMIT A SUPPLEMENTARY EROSION CONTROL PLAN TO THE OTHER FOR REVIEW AND APPROVAL BY THE PLAN APPROVAL AUTHORITY.

20-59: THE CONTRACTOR SHALL SUBMIT A SUPPLEMENTARY EROSION CONTROL PLAN TO THE OTHER FOR REVIEW AND APPROVAL BY THE PLAN APPROVAL AUTHORITY.

NO.	TITLE	KEY	SYMBOL	NO.	TITLE	KEY	SYMBOL
3.01	SAFETY FENCE	SAF	—	3.20	ROCK CHECK DAMS	CD	—
3.02	TEMPORARY GRAVEL CONSTRUCTION ENTRANCE	CE	—	3.21	LEVEL SPREADER	LS	—
3.03	CONSTRUCTION ROAD STABILIZATION	CRS	—	3.22	VEGETATIVE STREAMBANK STABILIZATION	VS	—
3.04	STRAW BALE BARRIER	STB	—	3.23	STRUCTURAL STREAMBANK STABILIZATION	SS	—
3.05	SILT FENCE	SF	—	3.24	TEMPORARY VEHICULAR STREAM CROSSING	VSC	—
3.06	BRUSH BARRIER	BB	—	3.25	UTILITY STREAM CROSSING	USC	—
3.07	STORM DRAIN INLET PROTECTION	IP	—	3.26	DEWATERING STRUCTURE	DS	—
3.08	CULVERT INLET PROTECTION	CIP	—	3.27	TURBIDITY CURTAIN	TC	—
3.09	TEMPORARY DIVERSION DIKE	DD	—	3.28	SUBSURFACE DRAIN	SD	—
3.10	TEMPORARY FILL DIVERSION	FD	—	3.29	SURFACE ROUGHENING	SR	—
3.11	TEMPORARY RIGHT-OF-WAY DIVERSION	RWD	—	3.30	TOPSOILING	TD	—
3.12	DIVERSION	DV	—	3.31	TEMPORARY SEEDING	TS	—
3.13	TEMPORARY SEDIMENT TRAP	ST	—	3.32	PERMANENT SEEDING	PS	—
3.14	TEMPORARY SEDIMENT BASIN	SB	—	3.33	SODDING	SD	—
3.15	TEMPORARY SLOPE DRAIN	TSB	—	3.34	BERMUDA GRASS AND ZOYSIAGRASS ESTABLISHMENT	ZS	—
3.16	PAVED FLUME	PF	—	3.35	MULCHING	MU	—
3.17	STORMWATER CONVEYANCE CHANNEL	SCC	—	3.36	SOIL STABILIZATION BLANKETS AND MATTING	SB	—
3.18	OUTLET PROTECTION	OP	—	3.37	TREES, SHRUBS, VINES AND GROUND COVERS	VEG	—
3.19	RIPRAP	RR	—	3.38	TREE PRESERVATION AND PROTECTION	TP	—
				3.39	DUST CONTROL	DC	—



TEMPORARY SEDIMENT TRAP DATA						
STRUCTURE	DRAINAGE AREA (ACRES)	STORAGE (C.Y.)		WEIR LENGTH (FT.)	WEIR HEIGHT (FT.)	BERM HEIGHT (FT.)
		REQ'D	DESIGN			
1	1.8 AC.	241 C.Y.	W=123 C.Y.	11'	1.3'	2'
			D=127 C.Y.			
		TOP OF WET 87' X 27' - 1.7' DEEP				
		TOP OF DRY 92' X 32' - 1.3' DEEP				
2	1.2 AC.	158 C.Y.	W=80 C.Y.	7'	1.6'	2'
			D=80 C.Y.			
		TOP OF WET 84' X 14' - 2.7' DEEP				
		TOP OF DRY 89' X 19' - 1.6' DEEP				