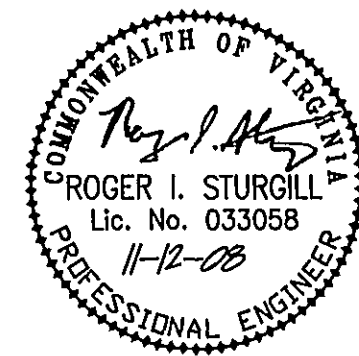
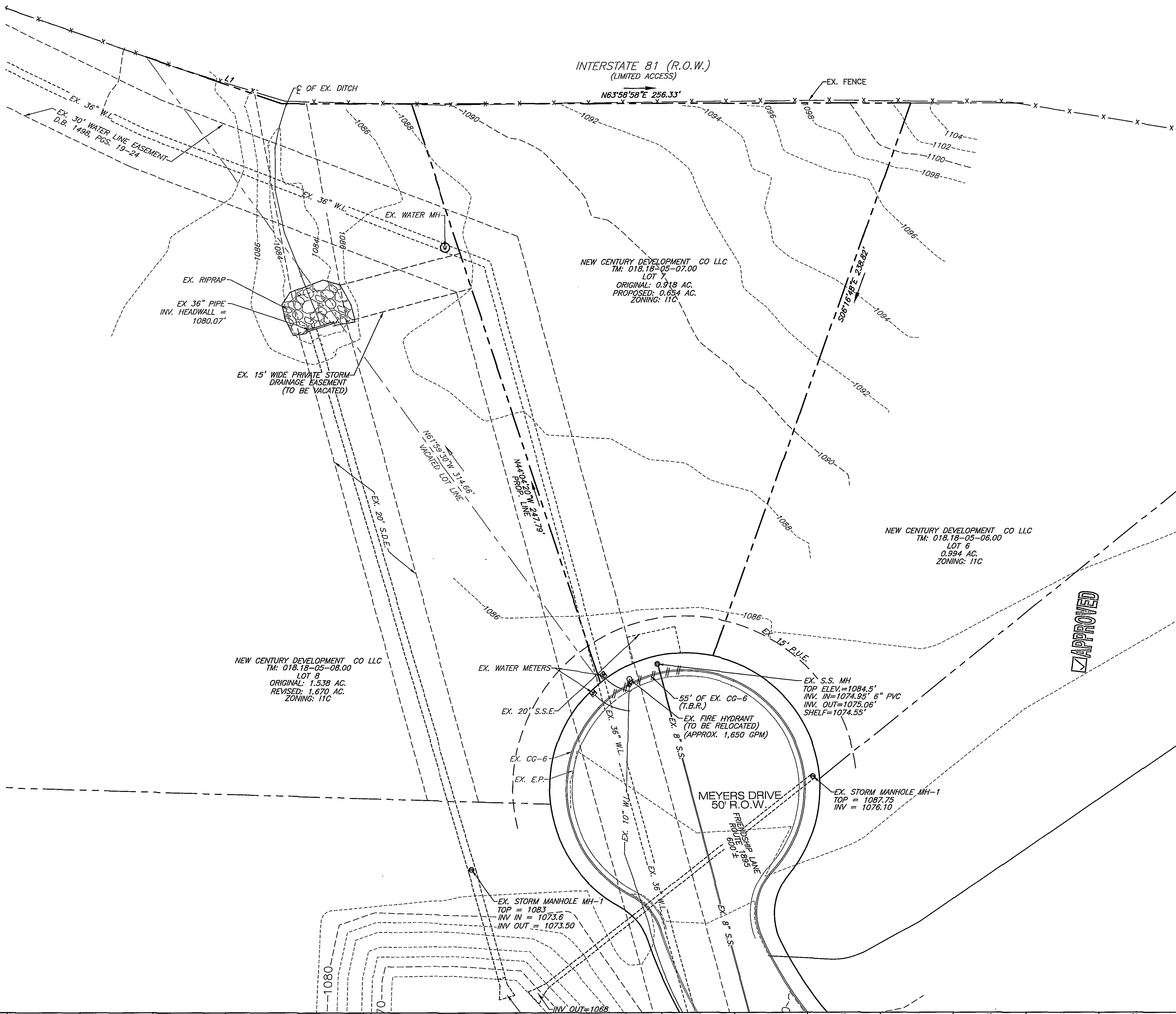


DEMOLITION NOTES

1. DEMOLITION SHALL INCLUDE, UNLESS OTHERWISE NOTED ON DRAWINGS, REMOVAL OF EXISTING OBJECTS OR IMPROVEMENTS, WHETHER INDICATED ON THE DRAWINGS OR NOT, THAT WOULD IN THE OPINION OF THE OWNER, PREVENT OR INTERFERE WITH THE PROGRESS OR COMPLETION OF THE PROPOSED WORK.
2. PERMITS, FEES AND LICENSES SHALL BE SECURED AND PAID FOR BY THE CONTRACTOR, INCLUDING DISPOSAL CHARGES AS REQUIRED.
3. WORK SHALL COMPLY WITH THE REQUIREMENTS OF THE GOVERNING AUTHORITIES IN DEMOLITION OF EXISTING PAVEMENT, CURBS AND GUTTERS, DRAINAGE STRUCTURES AND UTILITIES AS MAY BE REQUIRED.
4. ALL EXISTING UTILITIES TO ANY BUILDINGS SHOWN TO BE RAZED SHALL BE DISCONNECTED AND PLUGGED OR CAPPED AS REQUIRED BY THE COUNTY.
5. CONTRACTOR SHALL SAW-CUT ALL JOINTS WHERE EXISTING CURBING, PAVEMENT AND SIDEWALK IS TO BE DEMOLISHED AND NEW CONSTRUCTION JOINS THE EXISTING.
6. ALL EXISTING CURBING, CONCRETE SIDEWALK, ENTRANCES, BUILDING FOUNDATIONS AND TREES AND BRUSH THAT ARE DEMOLISHED SHALL BE REMOVED FROM THE SITE AND DISPOSED OF BY THE CONTRACTOR, BUILDING DEBRIS, ETC. SHALL NOT BE USED AS FILL MATERIAL ON THE SITE.
7. MAKE ARRANGEMENTS, BEFORE INITIATING DEMOLITION, FOR RELOCATING, DISCONNECTING, REROUTING, ABANDONING, OR SIMILAR ACTION AS MAY BE REQUIRED RELATIVE TO UTILITIES AND OTHER UNDERGROUND PIPING, TO PERMIT WORK TO PROCEED WITHOUT DELAY. ARRANGEMENTS SHALL BE MADE IN ACCORDANCE WITH REGULATIONS OF AUTHORITIES OF UTILITIES MENTIONED, SUCH AS OVERHEAD AND UNDERGROUND POWER AND TELEPHONE LINES AND EQUIPMENT, GAS PIPING, STORM SEWERS, SANITARY SEWERS, OR WATER PIPING. CONTRACTOR SHALL NOT USE WATER WHEN IT MAY CREATE HAZARDOUS OR OBJECTIONABLE CONDITIONS, SUCH AS ICE, FLOODING AND/OR POLLUTION.
8. CONDUCT OPERATIONS TO PREVENT DAMAGE TO ADJACENT BUILDINGS, STRUCTURES, OTHER FACILITIES, OR INJURY TO PERSONS.
9. PROMPTLY REPAIR DAMAGES CAUSED TO ADJACENT FACILITIES BY DEMOLITION OPERATIONS AT NO COST TO THE OWNER.
10. MAINTAIN EXISTING UTILITIES INDICATED TO REMAIN, KEEP IN SERVICE, AND PROTECT AGAINST DAMAGE DURING DEMOLITION OPERATIONS. PREVENT INTERRUPTION OF EXISTING UTILITIES SERVING OCCUPIED OR USED FACILITIES, EXCEPT WHEN AUTHORIZED IN WRITING BY AUTHORITIES HAVING JURISDICTION. PROVIDE TEMPORARY SERVICES DURING INTERRUPTIONS TO EXISTING UTILITIES AS ACCEPTABLE TO GOVERNING AUTHORITIES.
11. USE WATER SPRINKLING AND OTHER SUITABLE METHODS TO LIMIT DUST AND DIRT RISING AND SCATTERING IN AIR TO LOWEST PRACTICAL LEVEL.
12. COMPLY WITH GOVERNING REGULATIONS PERTAINING TO ENVIRONMENTAL PROTECTION.



PLANNERS • ARCHITECTS
ENGINEERS • SURVEYORS

1208 Corporate Circle
Roanoke, Virginia 24018
Phone: 540/772-9580
FAX: 540/772-8050

16871 City View Drive
Suite 200
Midlothian, Virginia 23113
Phone: 804/794-0871
FAX: 804/794-2835

680 Technology Park Drive
Suite 200
Glen Allen, Virginia 23060
Phone: 804/693-0132
FAX: 804/693-0138

448 Pappas Ferry Road, NW
Christiansburg, Virginia 24073
Phone: 540/881-4290
FAX: 540/881-4291

1681 Commerce Road
Suite 401
Verona, Virginia 24482
Phone: 540/248-3220
FAX: 540/248-3221

HANNABASS & ROWE GARAGE
EX. CONDITIONS & DEMO PLAN
COUNTY OF ROANOKE, VIRGINIA

DRAWN BY: BTC
DESIGNED BY: BTC
CHECKED BY: SMH
DATE: 6-13-08
REVISIONS:
7-28-08
8-25-08
9-12-08
11-12-08

SCALE: 1"=20'
SHEET NO.
C-2
JOB NO.
R0800146.00