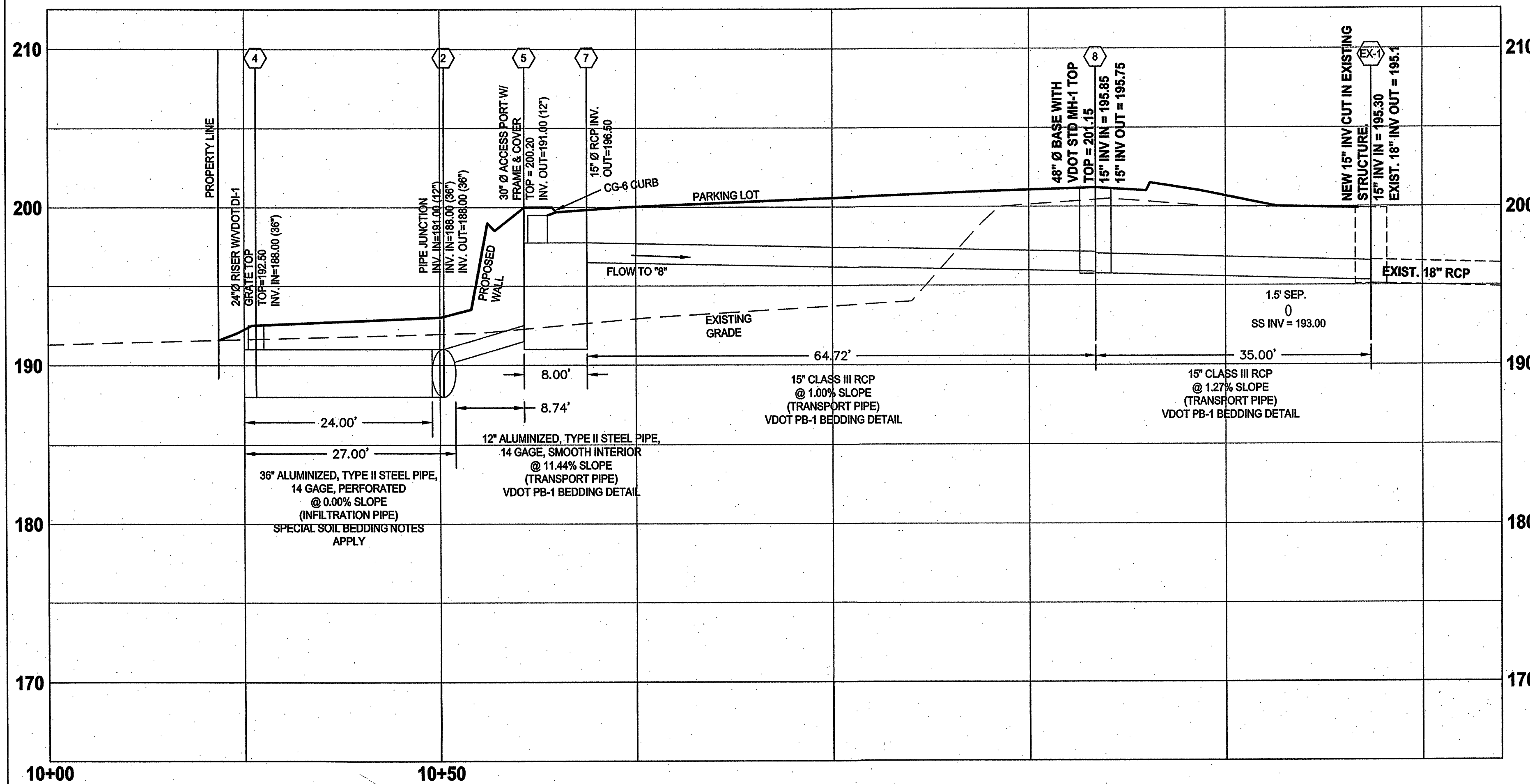


INFILTRATION PIPE PROFILE

RUN #1 THROUGH #3

SCALES: HORIZ: 1" = 10'; VERT: 1" = 5'



INFILTRATION & STORM PIPE PROFILE

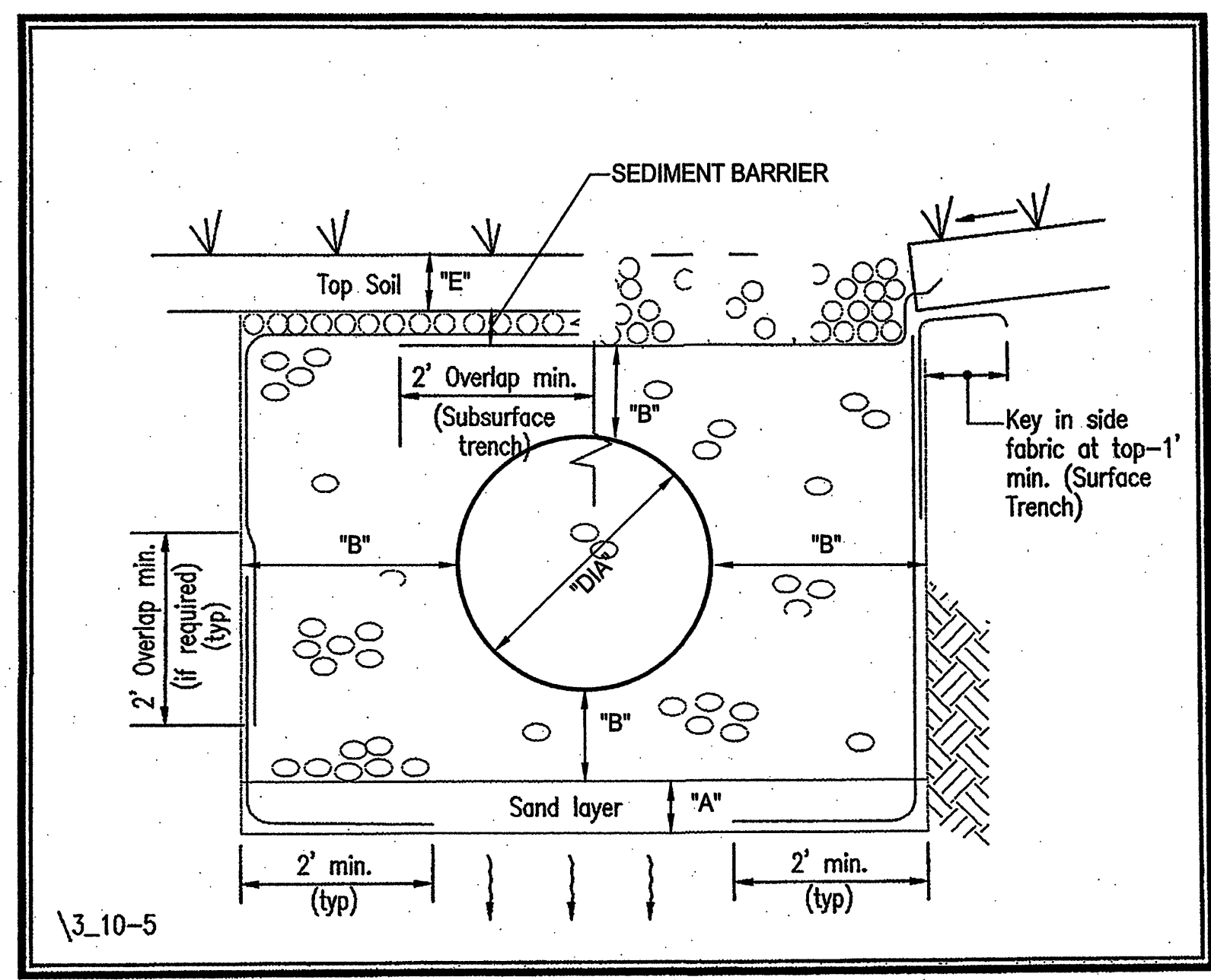
RUN #4 TO #2 TO #5, #7 TO #8 TO EX-1

SCALES: HORIZ: 1" = 10'; VERT: 1" = 5'

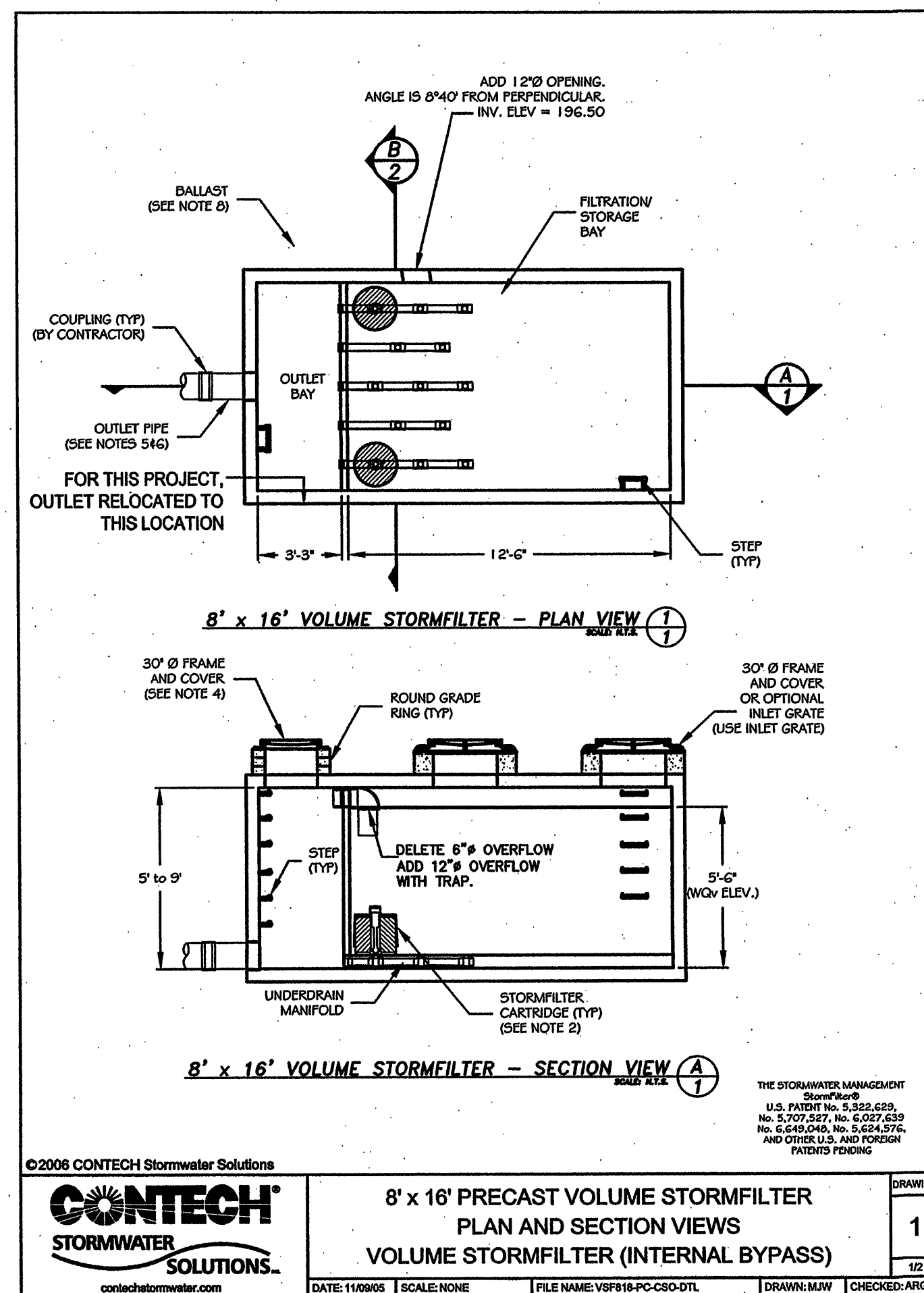
INFILTRATION TRENCH INSTALLATION NOTES

- KEEP UPSTREAM AREAS FROM FLOWING TO INFILTRATION TRENCH DURING THE INSTALLATION OF THE INFILTRATION TRENCH. FOR THIS PROJECT, INSTALL DIVERSION DIKE UPSTREAM OF SITE TO DIRECT FLOW AROUND TRENCH AREA.
- EXCAVATE TO BOTTOM OF TRENCH. FOR THIS PROJECT, THE EXCAVATION ELEVATION IS 186.33.
- SCARIFY BOTTOM OF TRENCH TO AVOID SMOOTHING OF SOIL OR SHEARING OF SOIL.
- PLACE 8-INCH LIFT OF SAND SUCH THAT NO COMPACTION OF SAND OCCURS. FOR THIS PROJECT, USE BACKHOE.
- TRIM TREE ROOTS FROM EDGES OF TRENCH SO THAT ROOTS DO NOT PENETRATE FILTER FABRIC.
- INSTALL FILTER FABRIC SO THAT NO VOIDS EXIST BETWEEN THE EXCAVATED TRENCH AND THE FILTER FABRIC. KEY FILTER FABRIC INTO SAND AS SHOWN ON DETAIL BELOW.
- CUT FABRIC TO ALLOW FOR 2" MINIMUM OVERLAP IN NECESSARY AREAS.
- PLACE BOTTOM DEPTH OF VDOT #1 OPEN GRADED STONE PER DEPTH "B" SHOWN IN CHART. STONE SHALL BE PLACED IN 1 LIFT TO AVOID MIXING OF STONE AND SOILS, AND TO LIMIT COMPACTION.
- LIGHTLY COMPACT STONE WITH PLATE COMPACTORS.
- INSTALL "DIA" SIZED PIPE USING THE MINIMUM DIMENSIONS AS SHOWN FOR "B", "C", AND "DIA". PLACE VDOT #1 OPEN GRADED STONE IN 8" LIFTS AND COMPACT BETWEEN SPRING LINES.
- PROVIDE DIM "B" FOR STONE COVER OVER PIPE.
- FOLD FILTER FABRIC OVER TOP AND OVERLAP WHERE NECESSARY.
- PLACE GEOTECH SEDIMENT BARRIER OVER TOP OF FILTER FABRIC AND COVER WITH SMALL DEPTH OF VDOT #57 STONE TO HOLD IN PLACE.
- PLACE MINIMUM DEPTH OF 6" OF TOPSOIL. NOTE: PLACE TOPSOIL FROM SEDIMENT BARRIER TO DESIRED FINISHED GRADE TO PROMOTE GROWTH OF VEGETATION AND LANDSCAPING.
- CONTRACTOR SHALL INSTALL "INFILTRATION" LANDSCAPING AND MONITOR AREA TO INSURE GOOD STAND OF DENSE TURF AND LANDSCAPE.

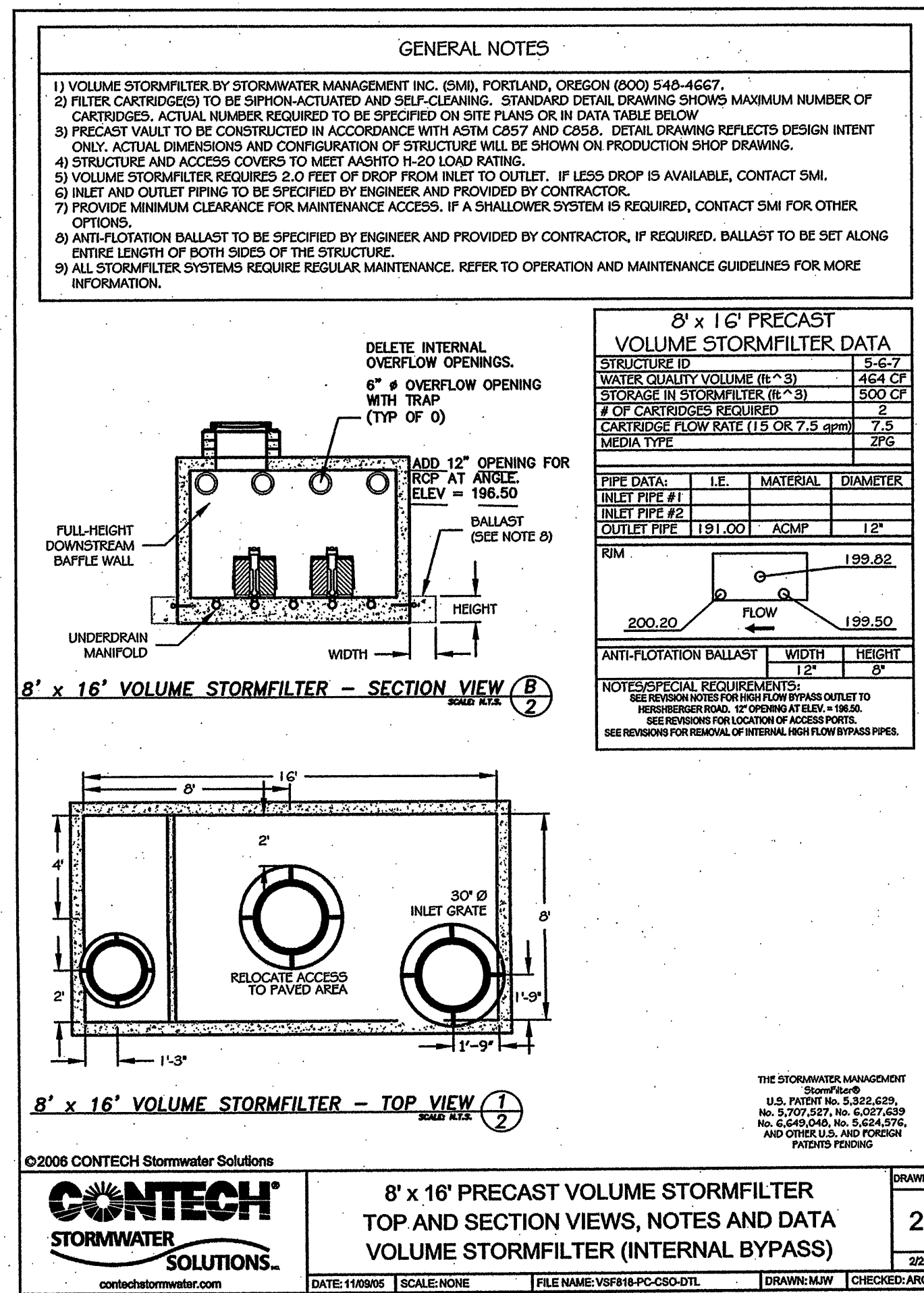
SYMBOL	DESCRIPTION	DIMENSION (IN)
A	SAND DEPTH	8
B	STONE BEYOND PIPE	12
C	DIST. BETWEEN PIPES	N/A
DIA	PIPE DIAMETER	36
E	MINIMUM TOPSOIL DEPTH	6



INFILTRATION TRENCH BACKFILL
NO SCALE



©2006 CONTECH Stormwater Solutions
CONTECH STORMWATER SOLUTIONS
8' x 16' PRECAST VOLUME STORMFILTER
PLAN AND SECTION VIEWS
VOLUME STORMFILTER (INTERNAL BYPASS)
DATE: 11/06/06 SCALE: NONE FILE NAME: VSP18-PC-CSD-DTL DRAWN: M/W CHECKED: A/RG



©2006 CONTECH Stormwater Solutions
CONTECH STORMWATER SOLUTIONS
8' x 16' PRECAST VOLUME STORMFILTER
TOP AND SECTION VIEWS, NOTES AND DATA
VOLUME STORMFILTER (INTERNAL BYPASS)
DATE: 11/06/06 SCALE: NONE FILE NAME: VSP18-PC-CSD-DTL DRAWN: M/W CHECKED: A/RG

parker
DESIGN GROUP
ENGINEERS • SURVEYORS • PLANNERS • LANDSCAPE ARCHITECTS
816 Boulevard
Salem, Virginia 24153
Phone: 540-387-1153
Fax: 540-389-5767
www.parkerdg.com

These documents are the property of Parker Design Group (PDG) and may not be reproduced or used without the express permission of PDG. Any reuse of these documents without authorization of PDG will be at the sole risk of the individual or entity utilizing said documents.

Paul J. Brown
PROFESSIONAL ENGINEER
PAUL J. BROWN
Lic. No. 036148
4-30-2006

Comprehensive Site Plan for
Star City Developers, Inc.
Hersherberger Station
Hersherberger Road, N.W.
City of Roanoke, Virginia

REVISIONS:

NO.	DATE	DESCRIPTION
1		Address City of Roanoke Comments PJB 4-5-08
2		Address City of Roanoke Comments PJB 4-5-08
3		Address City of Roanoke Comments PJB 4-5-08

DESIGNED BY: MFV
DRAWN BY: MFV
CHECKED BY: PJB
SCALE: As Shown
DATE: 27 February 2008

SHEET TITLE:
Storm Profiles & Details

C07
07 OF 08
PROJECT NUMBER:
08-0022-02