

AP 49339

DESIGN FEATURES RELATING TO CONSTRUCTION OR TO REGULATION AND CONTROL OF TRAFFIC MAY BE SUBJECT TO CHANGE AS DEEMED NECESSARY BY THE DEPARTMENT.

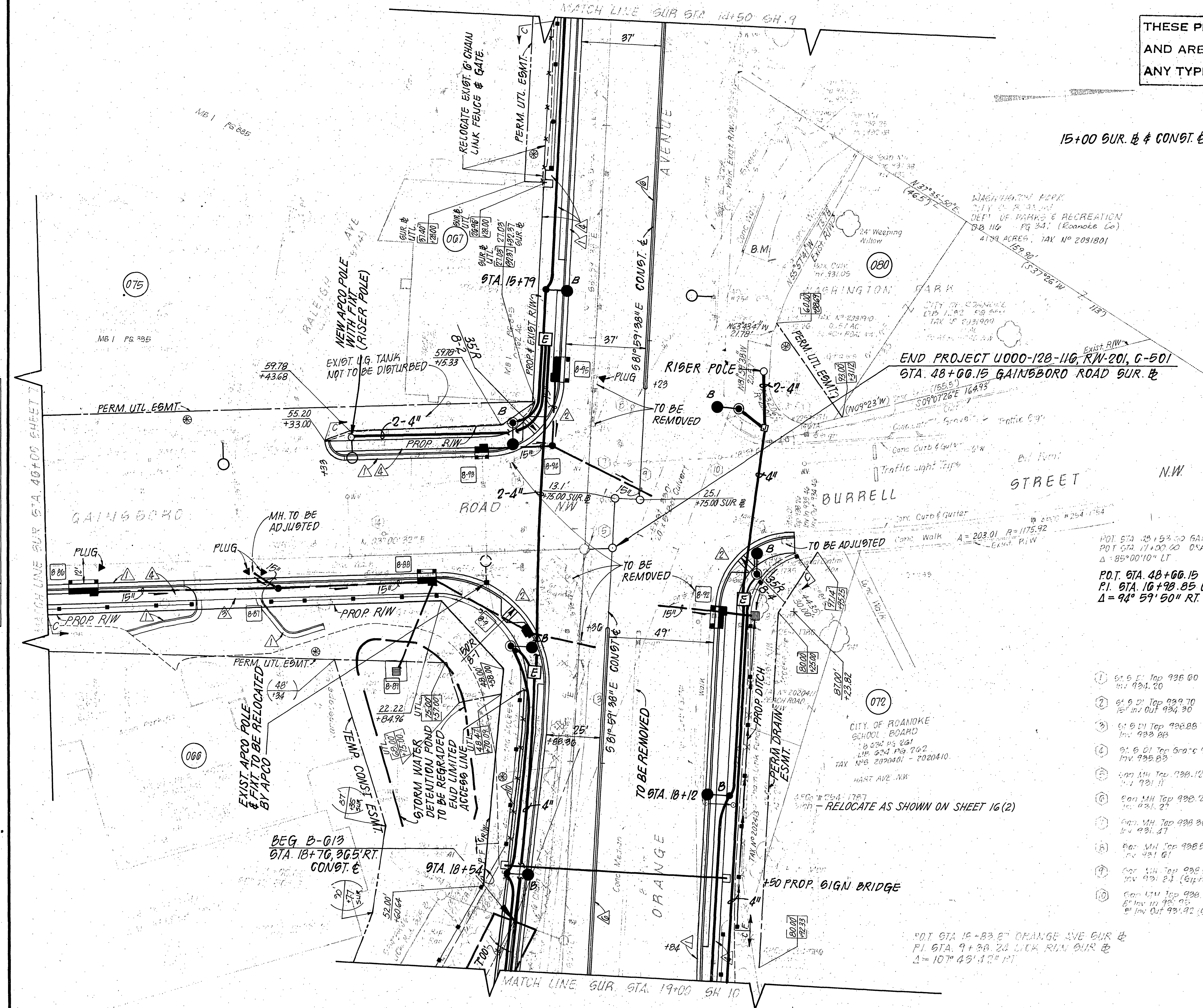
REVISED	FWA NUMBER	STATE	FEDERAL AID PROJECT	ROUTE	STATE PROJECT	SHEET NO.
	3	VA			U000-128-116, RW-201 C-501	13(B)

SUPERVISED BY G. T. ROGERSON, JR. (VDOT)
 DESIGNED BY MATTERN & CRAIG - (MICHAEL S. AGEE)

DATE	BY	REVISIONS

THESE PLANS ARE UNFINISHED AND ARE NOT TO BE USED FOR ANY TYPE OF CONSTRUCTION.

LEGEND	
	STD. CG-6 CURB & GUTTER
	STD. CG-12 CURB CUT RAMP
	STD. CG-92 ENTRANCE GUTTER
	VAR. WIDTH x 4" GEM. CONC. SIDEWALK
	STD. M9-1 RAISED CONC. MEDIAN STRIP
	DRAINAGE STRUCTURE NO.
	CURVE DATA
	STD. FE-CL CHAIN LINK FENCE
	TEMPORARY SILT BARRIER
	INLET PROTECTION
	PERM. UTIL. EASEMENT FOR APPALACHIAN POWER CO.



P.O.T. STA. 10+75.00 ORANGE AVE. CONGT & BK. 12' OFFSET RT. Δ = 90° RT.
 P.O.T. STA. 10+75.00 ORANGE AVE. CONGT & AHD.

P.O.T. STA. 48+54.00 GAINBORO RD. SUR. & P.I. STA. 10+98.85 ORANGE AVE. CONGT & Δ = 94° 59' 50" RT.

- | | |
|---|-----------------------------------|
| ① 6' 6" Top 936.60
Inv. 934.20 | ⑪ 6' 6" Top 936.05
Inv. 934.75 |
| ② 6' 6" Top 939.70
Inv. 934.30 | ⑫ 6' 6" Top 934.18
Inv. 929.80 |
| ③ 6' 6" Top 938.88
Inv. 933.88 | ⑬ 6' 6" Top 938.70
Inv. 933.00 |
| ④ 6' 6" Top 936.28
Inv. 935.83 | ⑭ 6" 6" Top 938.55
Inv. 931.40 |
| ⑤ 6" 6" Top 938.12
Inv. 931.11 | |
| ⑥ 6" 6" Top 938.27
Inv. 931.21 | |
| ⑦ 6" 6" Top 938.30
Inv. 931.47 | |
| ⑧ 6" 6" Top 938.50
Inv. 931.61 | |
| ⑨ 6" 6" Top 938.51
Inv. 931.81 (61' min.) | |
| ⑩ 6" 6" Top 938.04
Inv. 931.95
⑩ Inv. 931.92 (61' min.) | |

REFERENCES	SHEET
CONGT & PROFILE (ORANGE AVE.)	8A
ENTRANCE PROFILE	8A

