

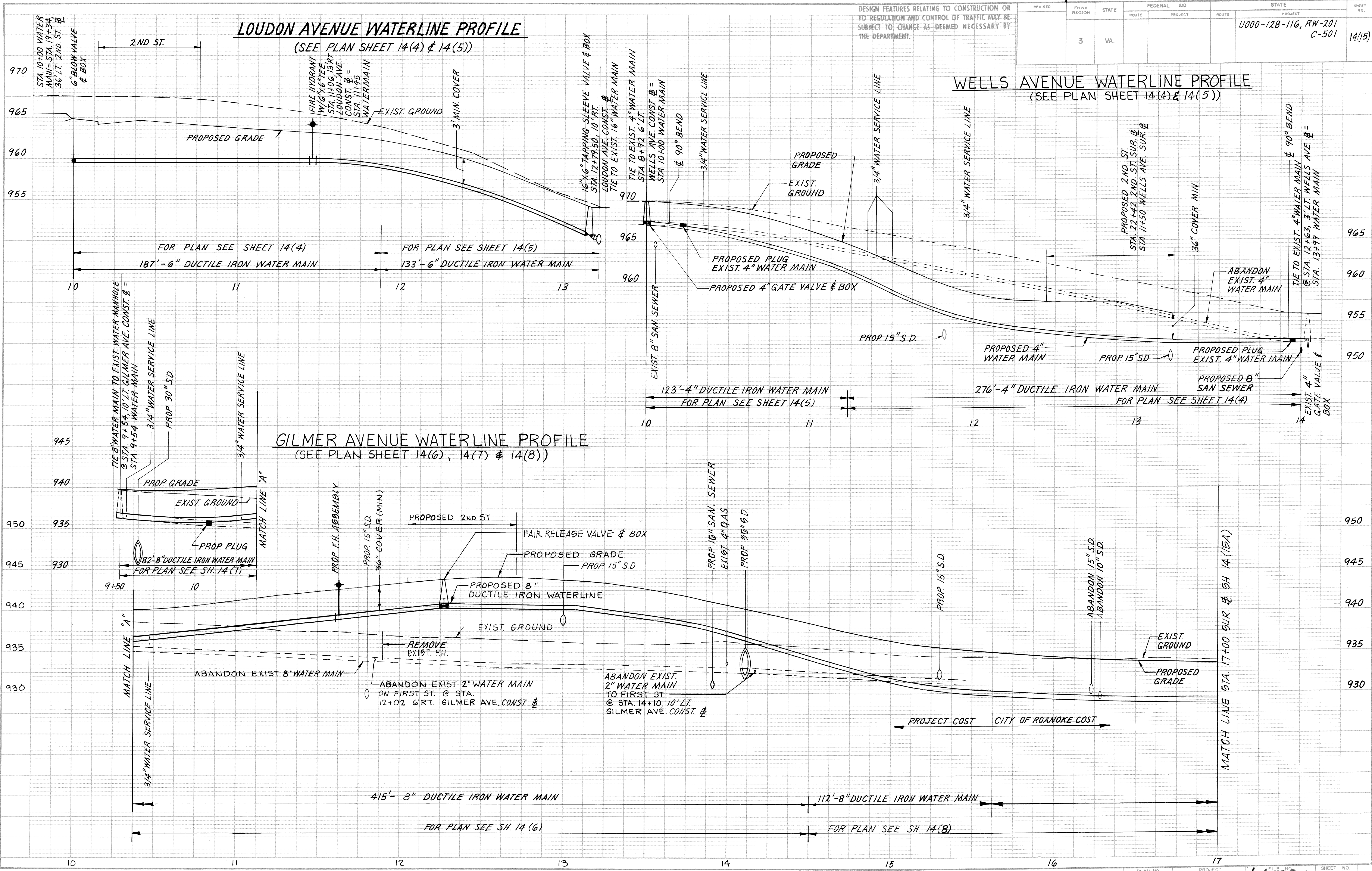
DESIGN FEATURES RELATING TO CONSTRUCTION OR TO REGULATION AND CONTROL OF TRAFFIC MAY BE SUBJECT TO CHANGE AS DEEMED NECESSARY BY THE DEPARTMENT.

REVISED	FHWA REGION	STATE	FEDERAL AID ROUTE	PROJECT	ROUTE	STATE PROJECT	SHEET NO.
	3	VA.				0000-128-116, RW-201 C-501	14(15)

LOUDON AVENUE WATERLINE PROFILE
(SEE PLAN SHEET 14(4) & 14(5))

WELLS AVENUE WATERLINE PROFILE
(SEE PLAN SHEET 14(4) & 14(5))

GILMER AVENUE WATERLINE PROFILE
(SEE PLAN SHEET 14(6), 14(7) & 14(8))



SUPERVISED BY **G. T. ROGERSON, JR. (VDOT)**
 DESIGNED BY **MATTERN & CRAIG - (MICHAEL S. AGEE)**

DATE	BY	REVISION