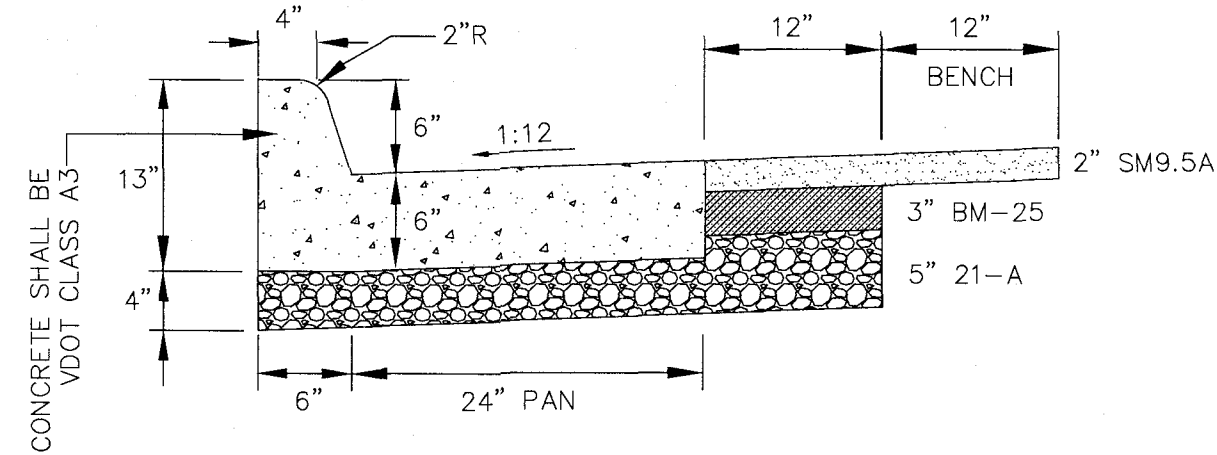
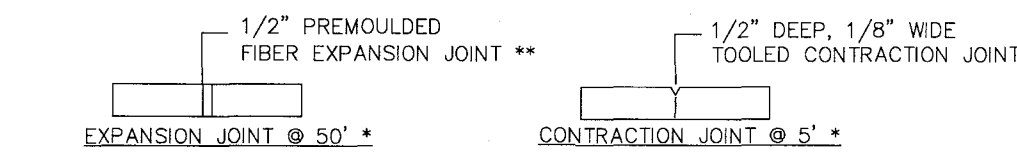


TYPICAL SIDEWALK with PLANTING STRIP

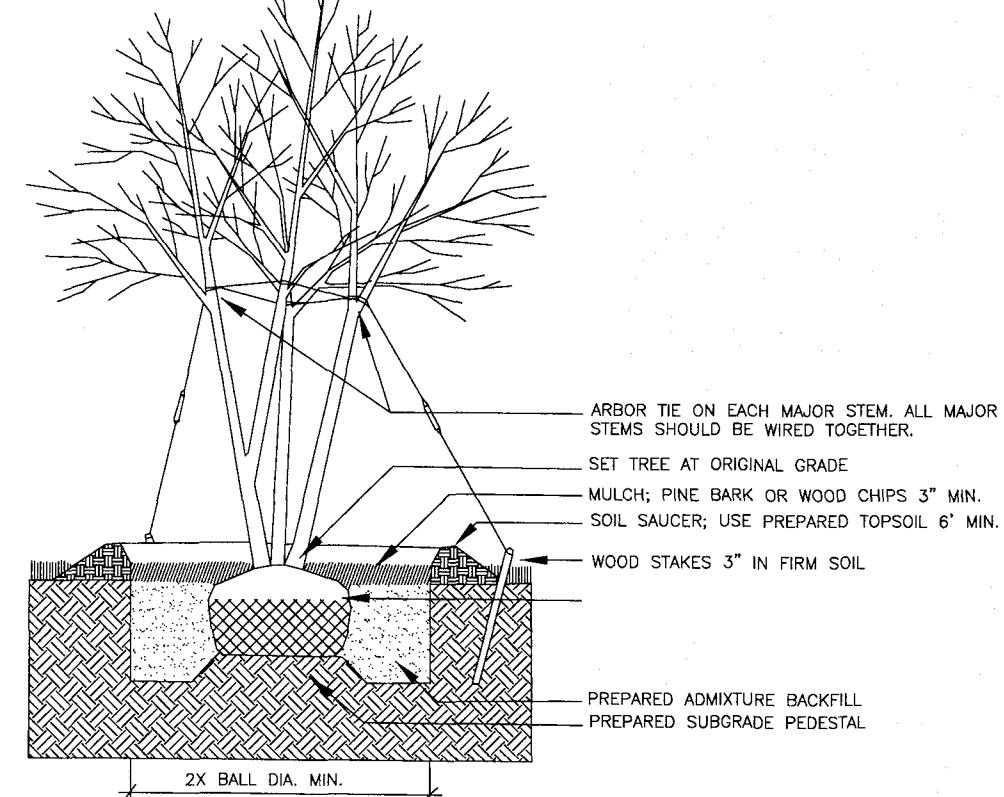
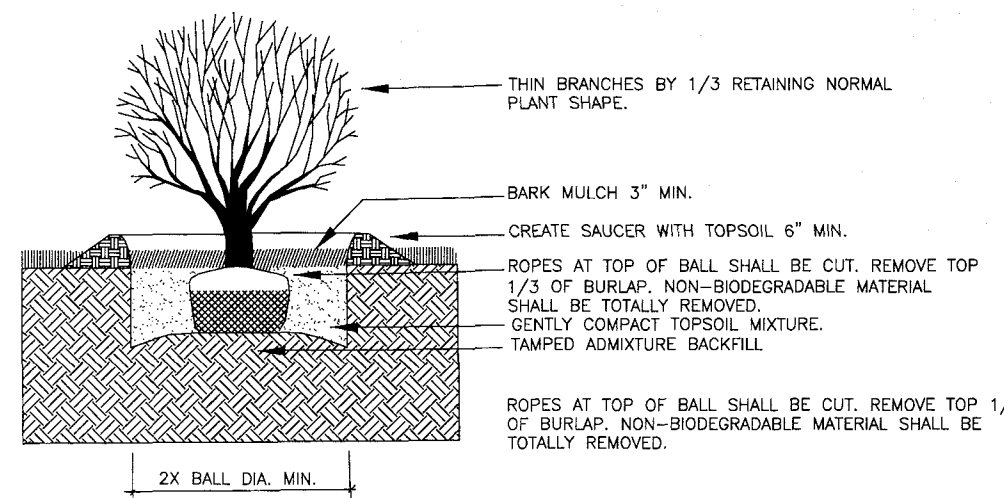
TYPICAL SIDEWALK without PLANTING STRIP

CITY OF ROANOKE PUBLIC SIDEWALK AND JOINT DETAILS



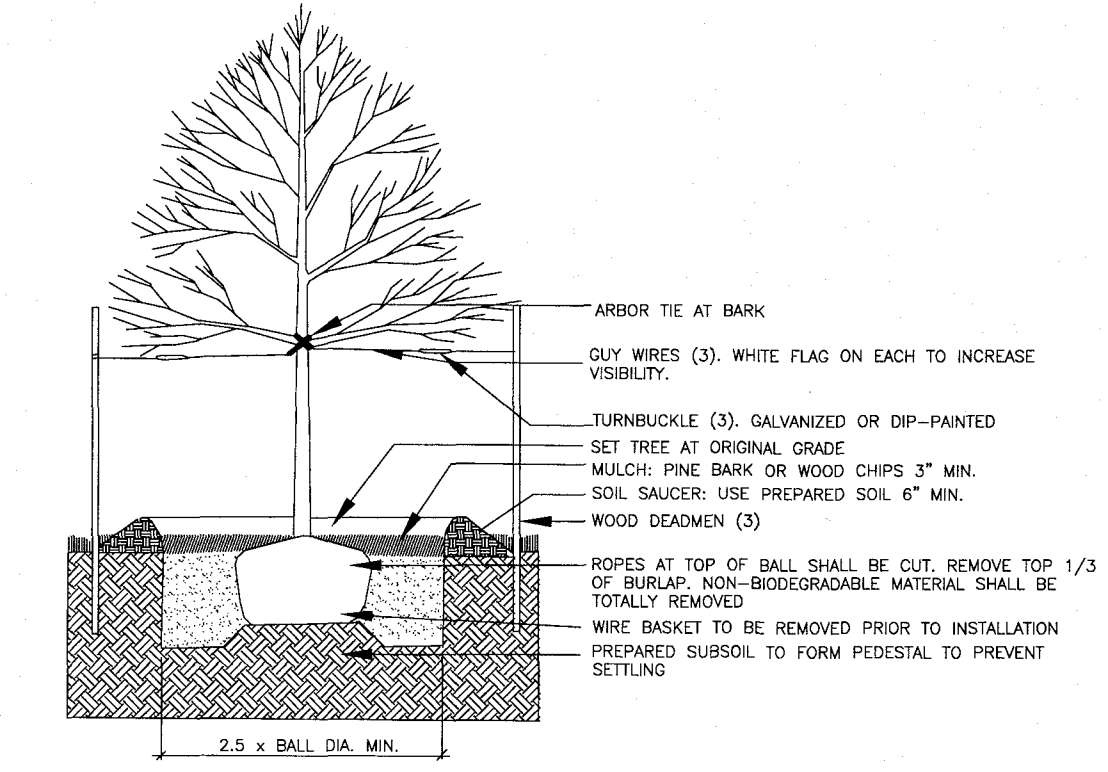
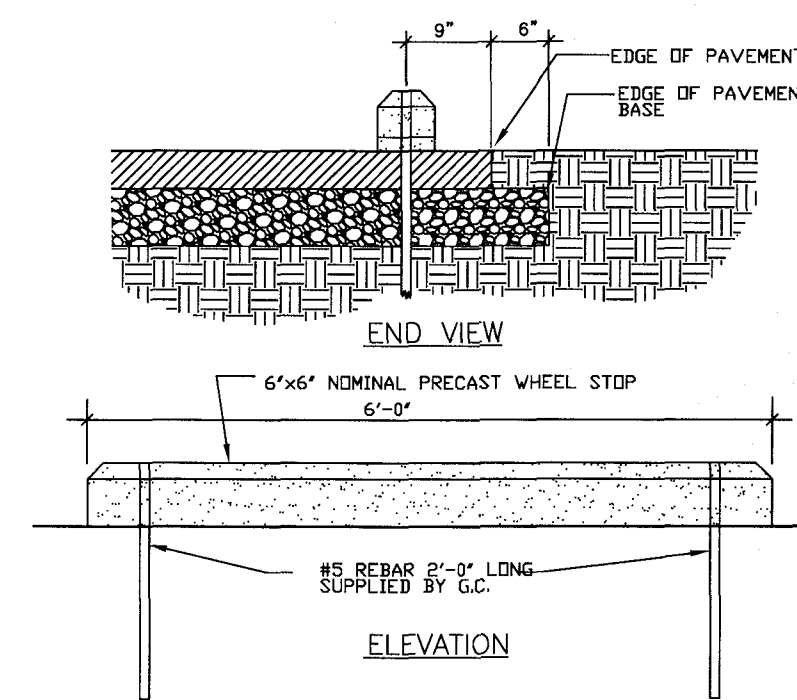
GENERAL NOTES:

1. ASPHALT RESTORATION SHOWN IN DETAILS IS FOR NON STRIPED ROADWAYS. FOR ROADWAYS WITH DOUBLE YELLOW STRIPING, (2) 3" COMPACTED LIFTS OF BM-25 BASE ASPHALT IS REQUIRED UNDER THE 2" SURFACE LAYER. DEPENDENT ON THE TOTAL EXTENTS OF ASPHALT RESTORATION, THERE MAY BE FURTHER ASPHALT RESTORATION REQUIREMENTS. REFERENCE THE LATEST REVISION OF THE CITY OF ROANOKE RIGHT OF WAY EXCAVATION AND RESTORATION STANDARDS.
2. ALL CONCRETE SHALL BE VDOT A3 WITH VDOT NO. 57 AGGREGATE EXCEPT FOR ENTRANCES WHICH SHALL BE VDOT A3 HIGH EARLY.
3. ALL 21-A BASE STONE SHALL BE COMPACTED TO 95% MAXIMUM DRY DENSITY WITHIN ±2% OPTIMUM MOISTURE CONTENT.
4. PROVIDE STRAIGHT, CLEAN SAWCUTS FOR NEW WORK ALONG ALL EXISTING CONCRETE AND ASPHALT ITEMS SUCH AS STREETS, SIDEWALKS, AND DRIVEWAYS. METAL FORMS IN GOOD CONDITION SHALL BE USED. ASPHALT SHALL NOT BE USED AS A FORM FOR NEW CONCRETE WORK.
5. DRIVEWAY RESTORATION SHALL MATCH EXISTING SURFACE TYPE (ASPHALT, GRAVEL, CONCRETE, ETC.) CONTRACTOR SHALL ENSURE A SMOOTH TRANSITION FOR VEHICULAR TRAFFIC.
6. FOR AREAS WHERE EXISTING CURB AND/OR SIDEWALK EXIST, REMOVE EXISTING ITEMS TO THE NEAREST JOINT.



SHRUB PLANTING DETAIL

MULTI-STEM PLANTING DETAIL



CONCRETE BUMPER BLOCK DETAIL

DEC. TREE PLANTING DETAIL