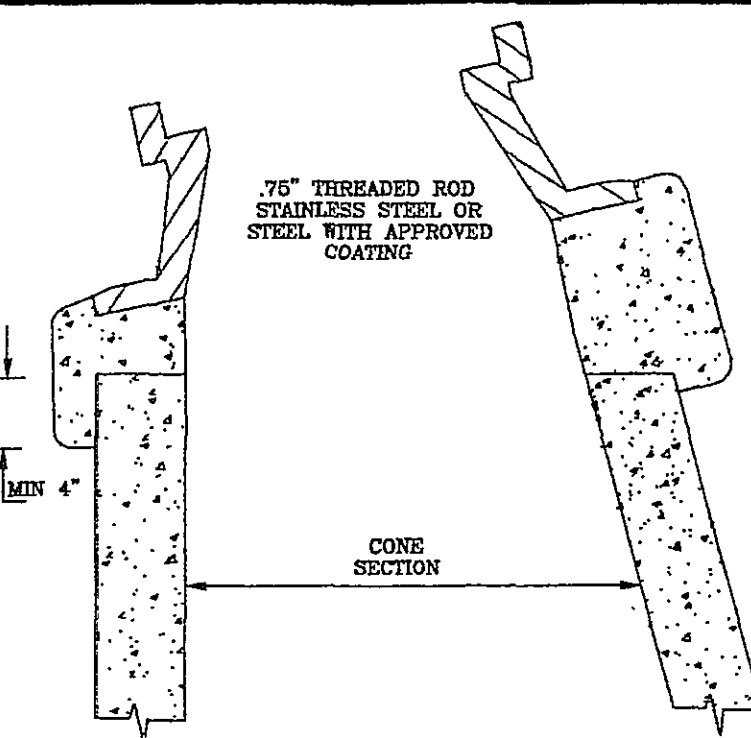


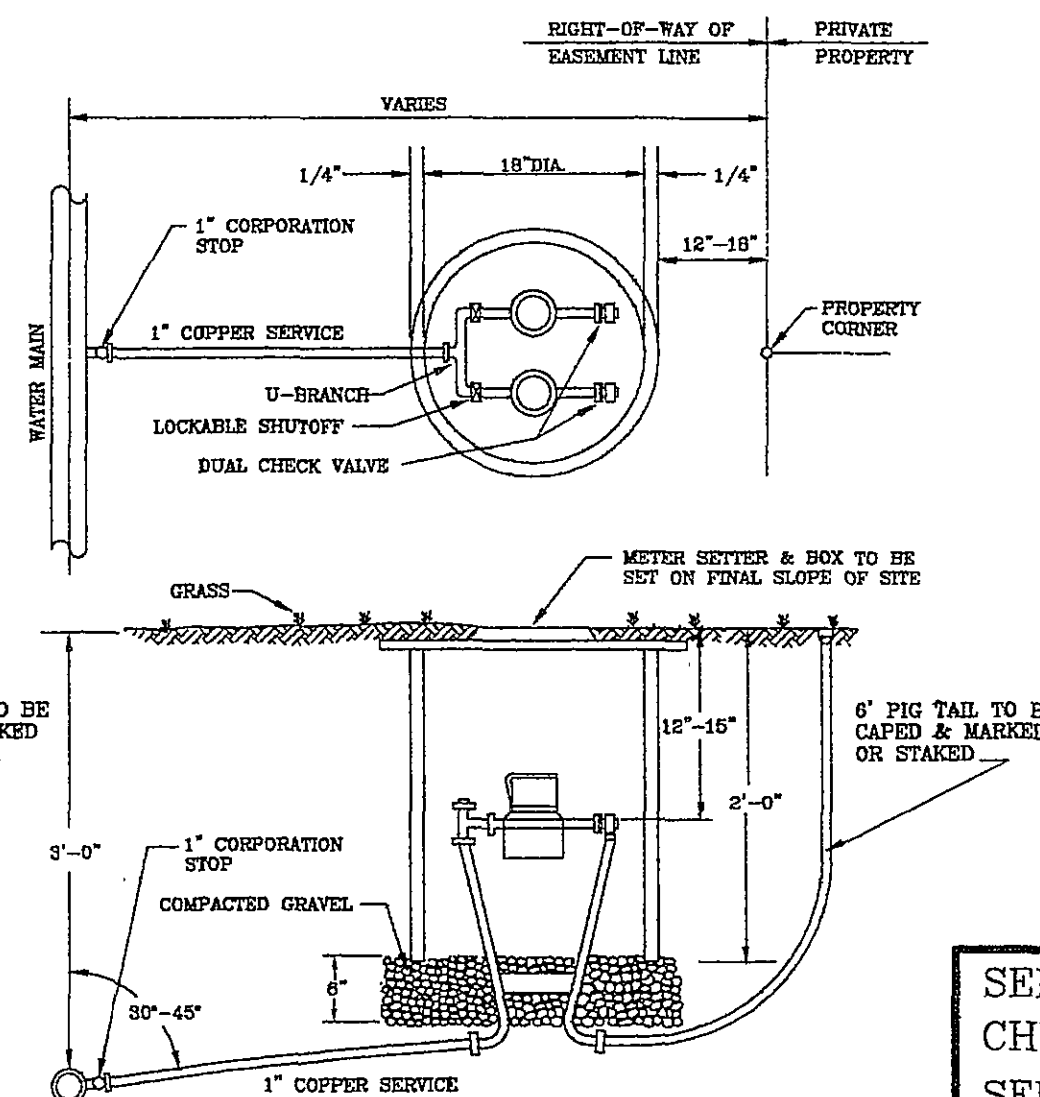
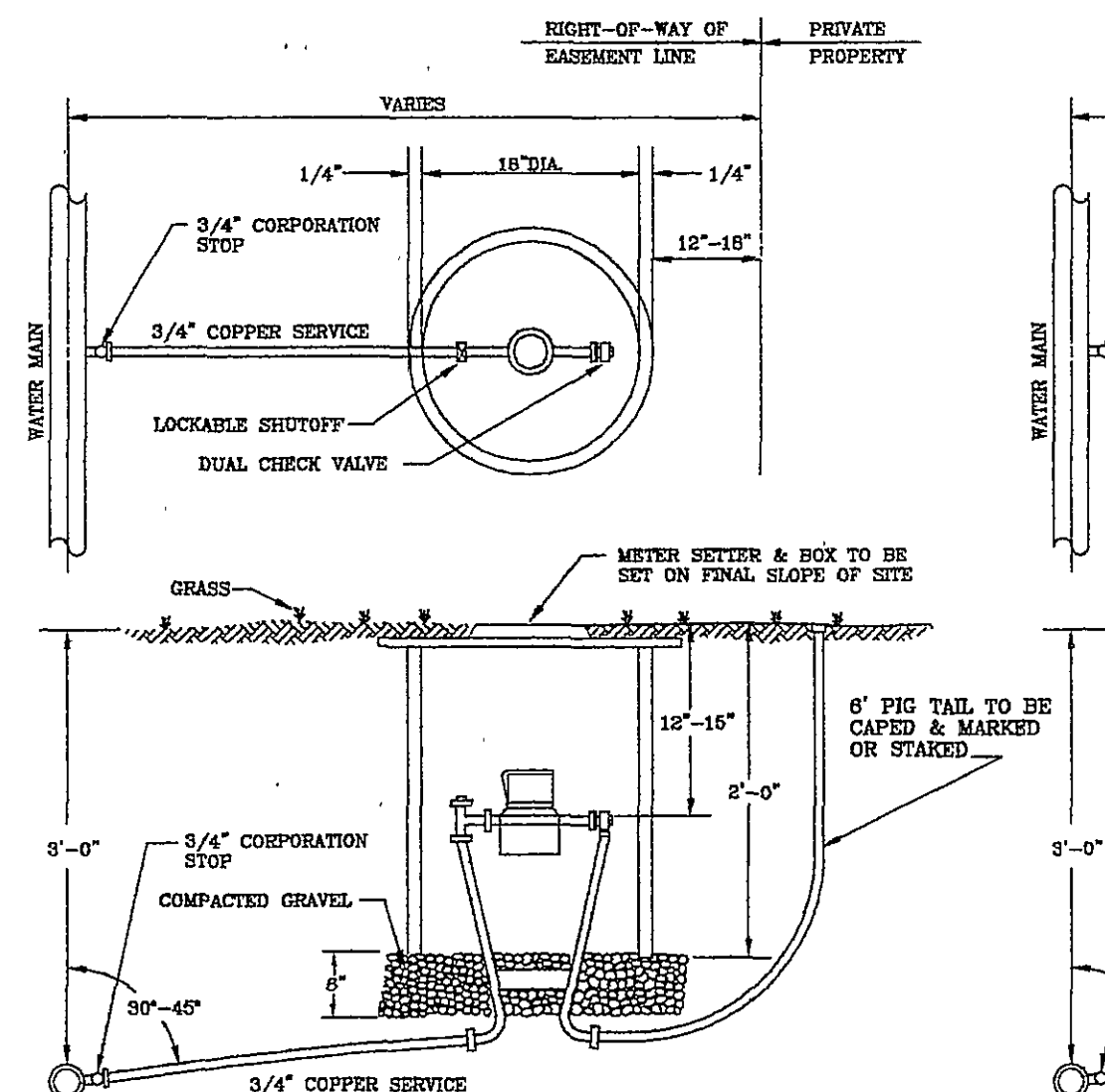
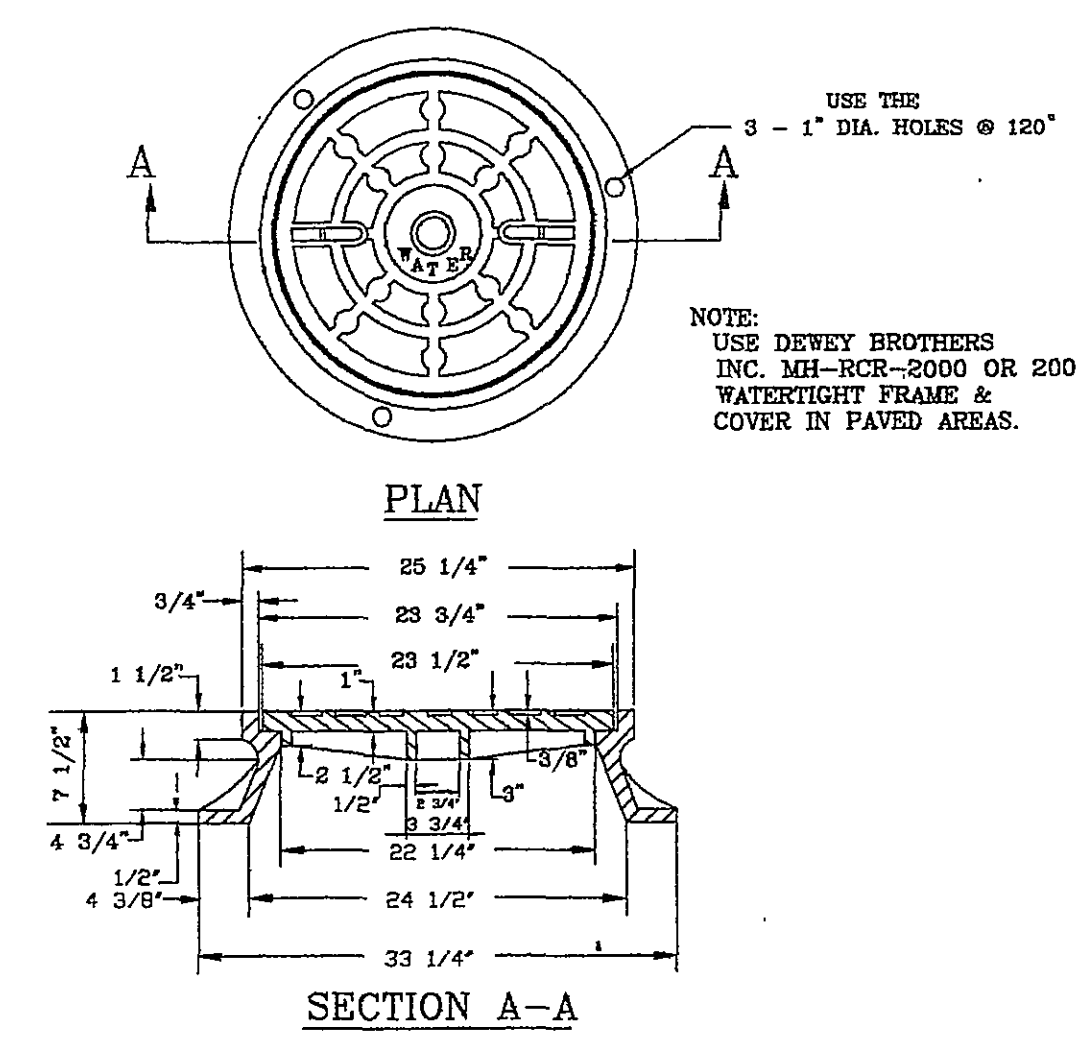
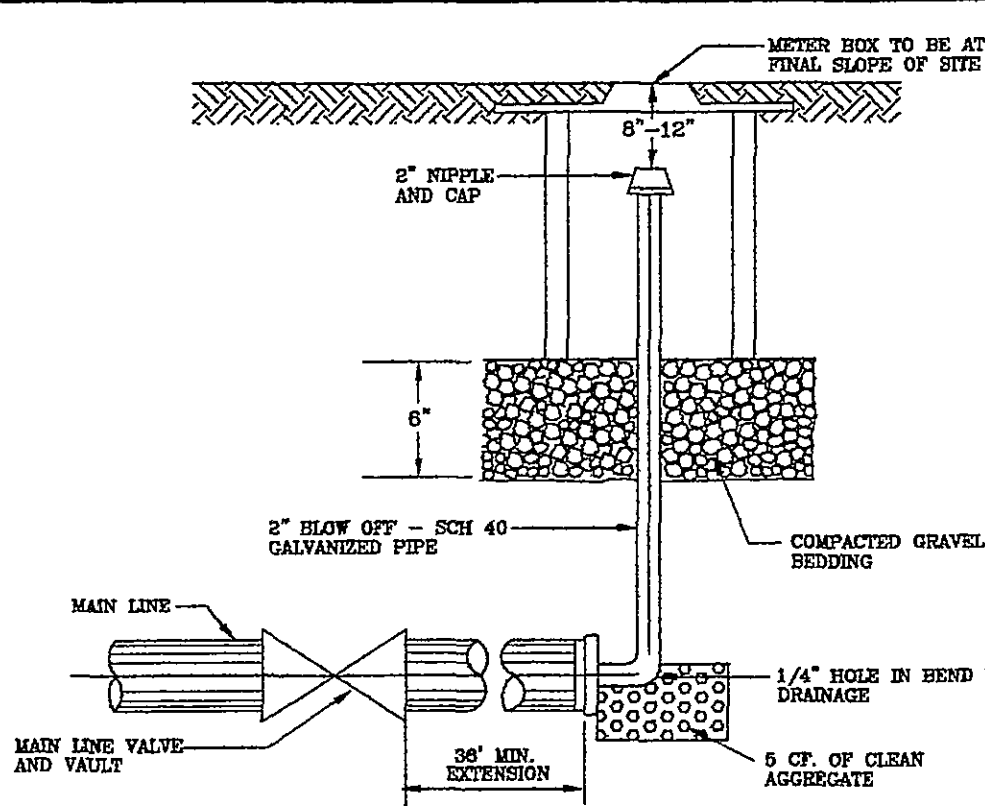
PIPE SIZE	90° BEND		45° BEND		22 1/2° BEND		11 1/4° BEND		TEE		PLUG	
A	B	A	B	A	B	A	B	A	B	A	B	
4"	5"	12"	5"	8"	5"	6"	6"	11"	9"	10"	6"	
6"	16"	12"	9"	10"	8"	8"	8"	11"	11"	12"	18"	
8"	15"	13"	10"	15"	8"	10"	10"	12"	12"	12"	18"	
10"	20"	16"	12"	14"	8"	12"	8"	12"	14"	16"	30"	
12"	20"	16"	12"	14"	8"	12"	8"	12"	14"	16"	30"	
16"	26"	20"	16"	18"	11"	13"	11"	13"	16"	20"	36"	
24"	82"	42"	62"	30"	44"	22"	22"	16"	82"	42"	82"	
30"	185"	42"	100"	42"	52"	42"	40"	30"	185"	42"	185"	



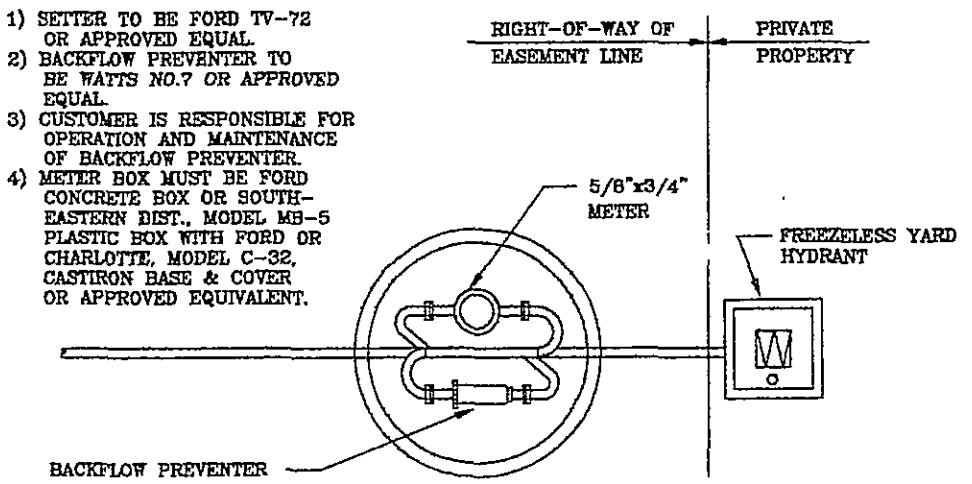
NOTE:

1. USE MODERATELY STIFF MIX OF NON SHRINK CEMENT, SAND AND 1/2" AND LESS DIAMETER GRAVEL, WITH 28 DAYS, STRENGTH AT 3,000 P.S.I.
2. MIX IS TO BE FORCED INTO ALL GROOVES AND UNDER FLANGE OF FRAME AND LEFT AT OR ABOVE TOP OF FLANGE.
3. MAX 4" BRICK OR CONCRETE BLOCKS TO BE USED FOR GRADE CONTROL.
4. DO NOT BAGGILL AROUND FRAME AND COVER, FOR 48 HOURS AFTER CON. IS PLACED. THE USE OF HIGHLY STRENGTH CONCRETE WOULD REDUCE TIME TO (24HRS).
5. RESTRICT TRAFFIC LOAD FOR MIN. 24 HOURS.

INSTALLATION DETAIL FOR ALL FRAMES AND COVERS



SEE SHEET 6 FOR VAULT W/ DETECTOR
CHECK & METER
SEE SHEET 6 FOR WATER LINE
BEDDING DETAILS



- Vault & Water Standards for Construction**
1. vaults, manhole bases, risers, tapers and grade rings shall be precast reinforced concrete manufactured in accordance with the Florida Department of Transportation Road and Bridge Specifications, Section 503.
 2. manhole base and riser sections construction shall be vertical with maximum 1" in 4' tilt.
 3. A maximum of 2 construction grade rings or maximum of 1' of grade rings and frame and cover adjustment are allowable.
 4. final adjustment of frame and cover shall be in accordance to frame and cover adjustment detail using non shrink concrete with maximum of 4 rebar or concrete blocks for grade control. frame and cover are to be set at finish grade or 1/4" above finish grade in pavement and yard areas and minimum 6" above finish grade in trench areas. manhole frames and covers are not to be set in drainage swale, valley gutter, etc.
 5. joints and openings in manhole units shall be made watertight by using butyl sealant, o ring gaskets or mastic. the concrete surface shall be cleaned prior to use of sealant.
 6. frame and covers
 - a) dewey brothers inc. series 2000 or 2001.
 - b) approved equal.
 7. all lift holes, openings around pipe, etc. shall be filled from inside and outside to thickness of structure.
 8. all units used in manhole and vault construction shall be securely connected by interlocking between units, concrete collars or other approved methods.
 9. area around meter box at a radius of 4' to be on finish grade and unprotected.

- ## APPROVED MATERIALS
1. METER BOXES
 - A) FORD IRONCRETE METER BOX WITH NO. 2 IRONCRETE TOP OR APPROVED EQUAL.
 - B) MUELLER DISTRIBUTOR MODEL MB-5 PLASTIC BOX WITH FORD OR CHARLOTTE MODEL C-32 CAST IRON BASE AND COVER (NOT APPROVED FOR ROADWAY AREA).
 - C) APPROVED EQUAL.
 2. METER SETTER (INCLUDING INLET RISER VALVE AND DOUBLE CHECK VALVE ON OUTLET)
 - A) FORD VBH 72-15-WD.
 - B) APPROVED EQUAL.
 3. METER SETTER EXTENDER OR RISER
 - A) NOT ALLOWED UNLESS APPROVED BY THE UTILITY DIRECTOR.
 4. CORPORATION STOP
 - A) MUELLER MODEL H-1500
 - B) FORD MODEL P-600
 - C) APPROVED EQUAL.
 5. U-BRANCH
 - A) FORD MODEL U28-43
 - B) MUELLER MODEL H 15082
 - C) APPROVED EQUAL
 6. SERVICE SADDLES (FOR PVC PIPE)
 - A) FORD MODEL FS 202 AND FC 202 WITH STAINLESS STEEL BAND AND BOLTS.
 - B) APPROVED EQUAL.

