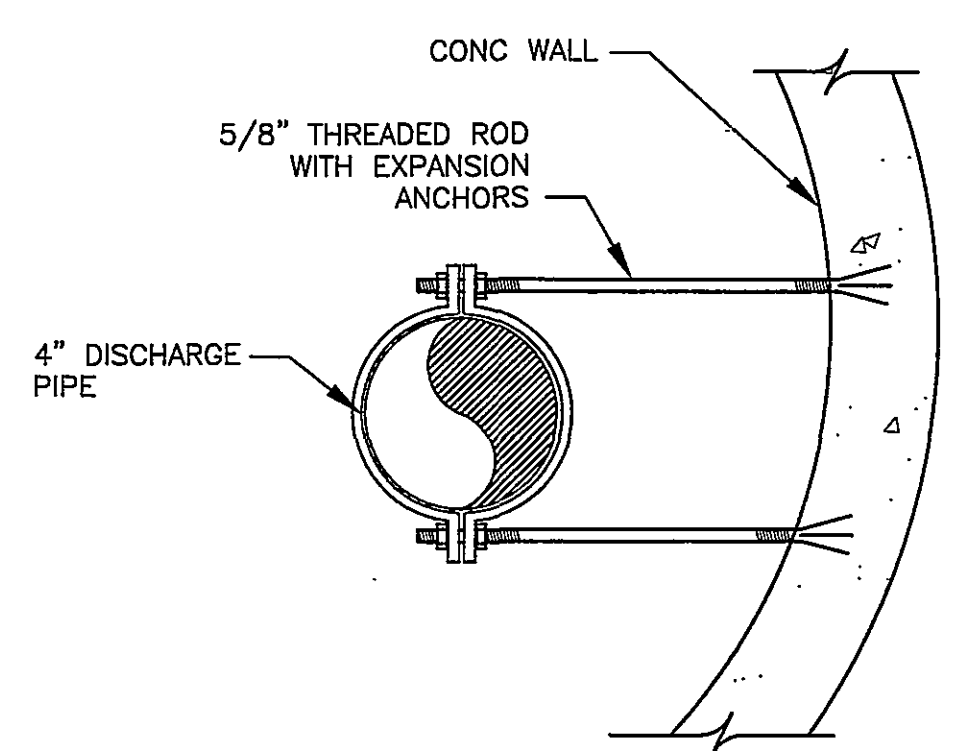
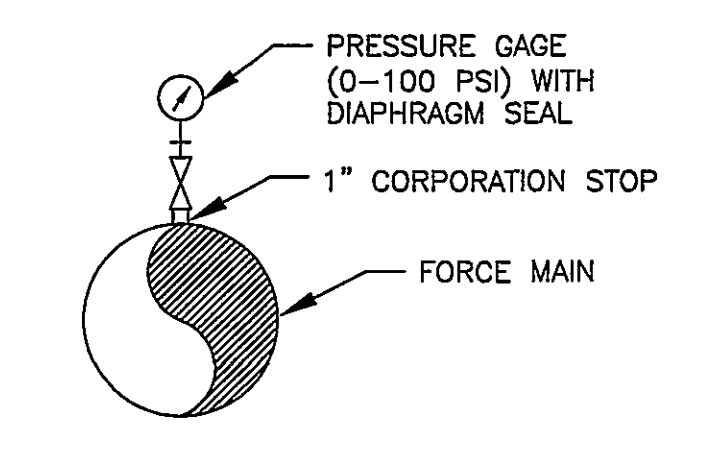


**PUMP STATION**  
SCALE: 1"=10'

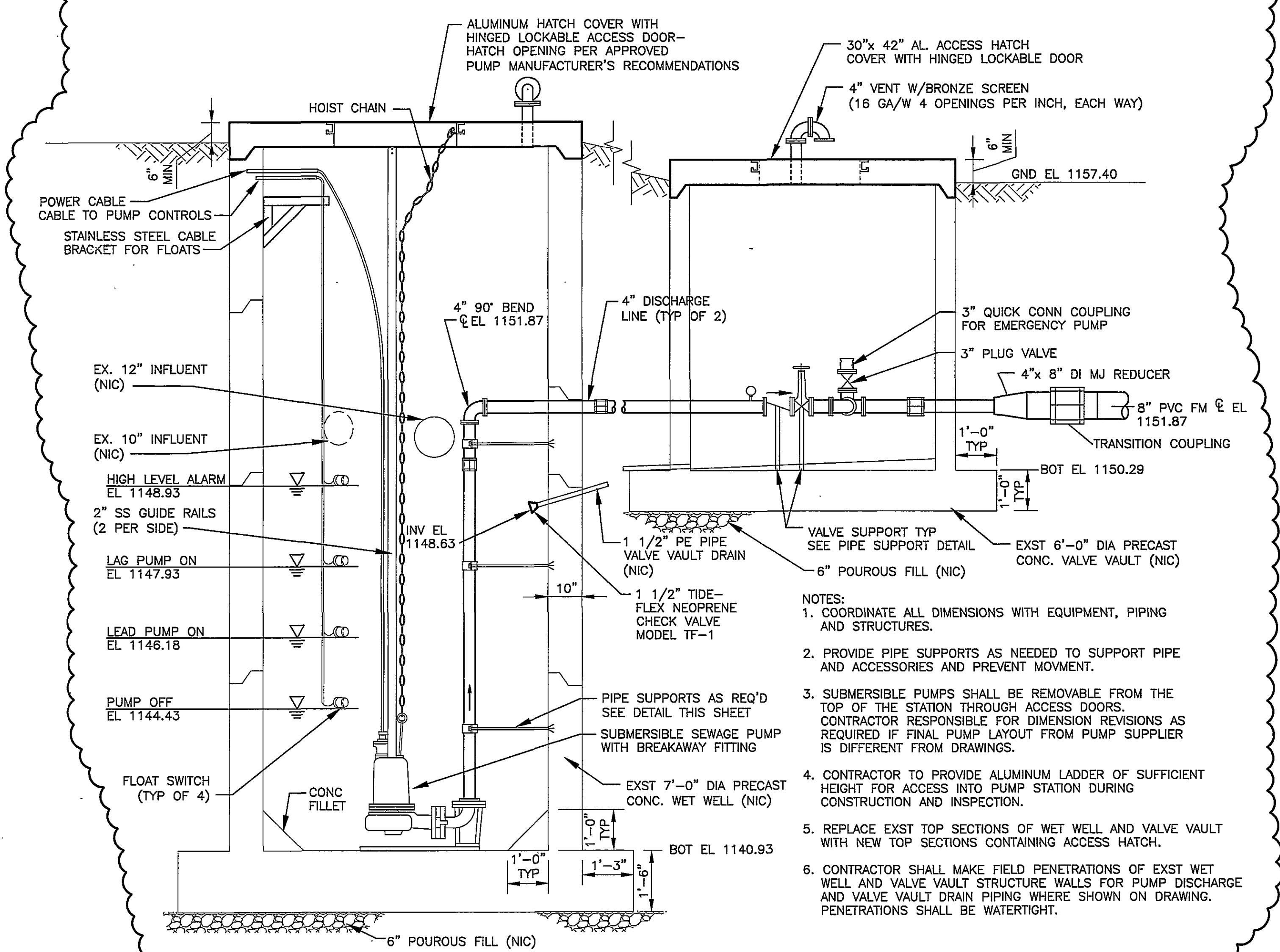
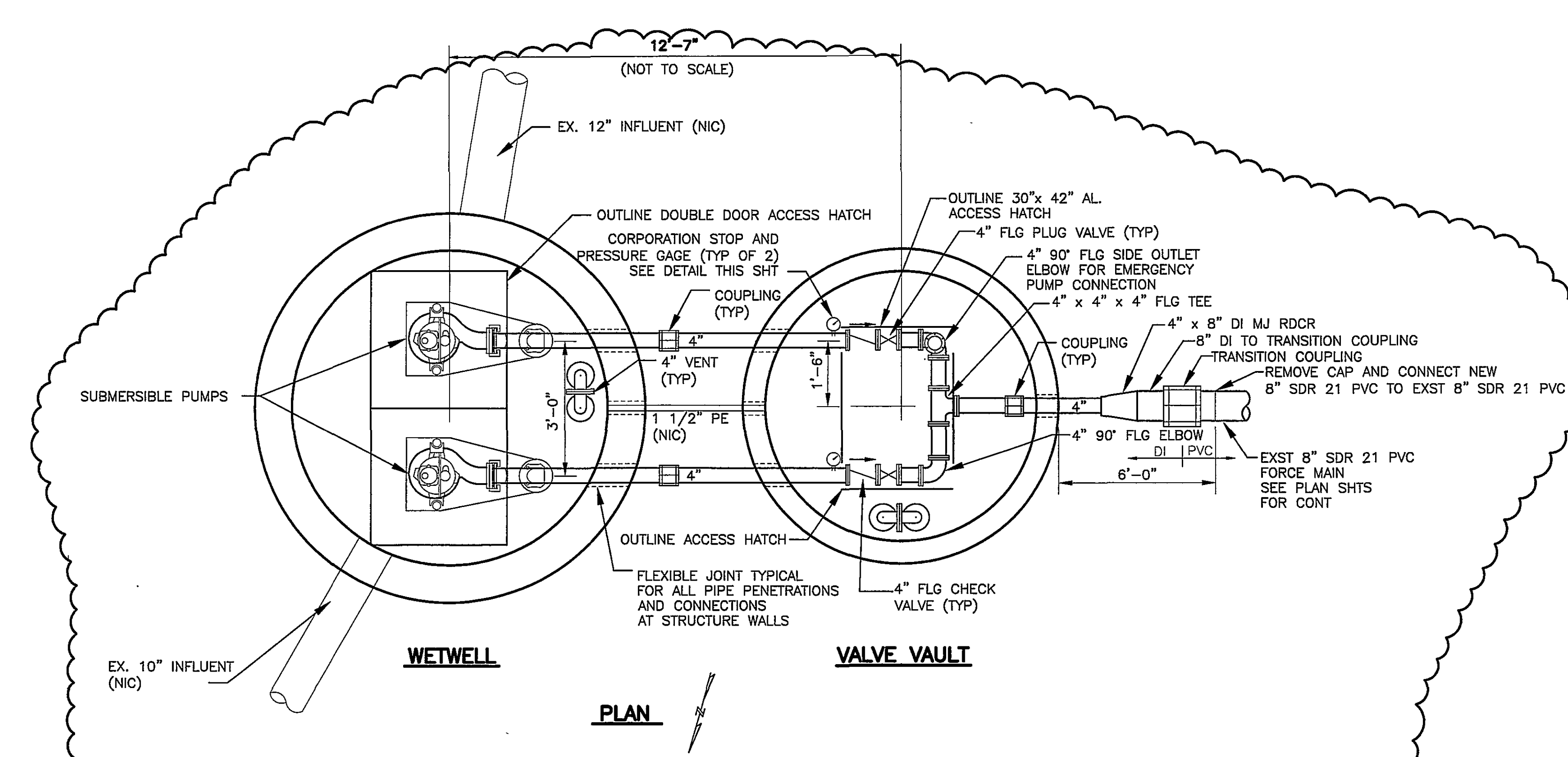


**PIPE SUPPORT DETAIL**  
NO SCALE

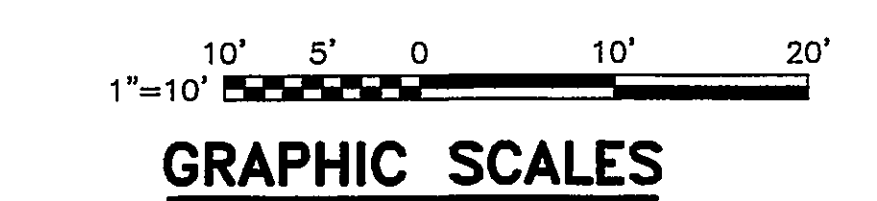


**CORPORATION STOP AND PRESSURE GAGE DETAIL**  
NO SCALE

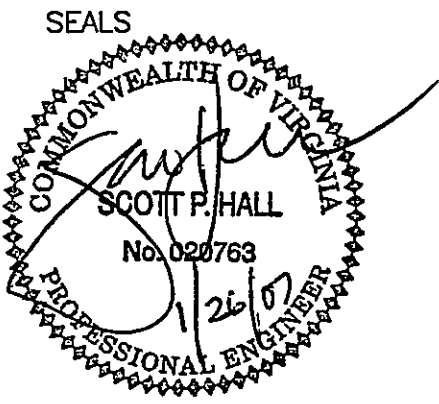
**NOTES THIS SHEET:**  
1. SEE SHEET C001 FOR SITE NOTES. SEE SHEET C002 FOR SITE LEGEND AND COORDINATE TABLE.



**SEWAGE PUMP STATION PLAN AND SECTION**  
NO SCALE



HAYES, SEAY, MATTERN & MATTERN, INC.  
1315 FRANKLIN ROAD  
ROANOKE, VA 24016  
(540) 857-3100 WWW.HSMM.COM



CONSULTANT

**THOMPSON & LITTON**

P.O. Box 1307  
103 East Main Street  
Wise, Virginia 24293

**Rolf Jensen & Associates, Inc.**  
Life Safety Consultants  
3040 Williams Drive, Suite 400  
Fairfax, Virginia 22031

**Faassen & Associates, Inc.**  
Food Service & Laundry Consultant  
8526 Sunflower Road  
Charlotte, NC 28227

**David E. Musacchio & Associates**  
Security/Detention Consultant  
Cookeville, Tennessee

**WESTERN VIRGINIA REGIONAL JAIL**

WESTERN VIRGINIA  
REGIONAL JAIL AUTHORITY  
ROANOKE COUNTY, VIRGINIA

REV	DATE	DESCRIPTION	APP
1	10/02/06	ADDENDUM 1	JMC
5	01/29/07	GENERAL REVISIONS	JMC

COMM NO: 10075  
ISSUE DATE: FEBRUARY 1, 2007  
DESIGNED BY: MDD DRAWN BY: REM  
CHECKED BY: JAM SUBMITTED BY: JMC  
© HAYES, SEAY, MATTERN & MATTERN, INC., 2005. ALL RIGHTS RESERVED.

CIVIL

PUMP STATION  
DETAILS