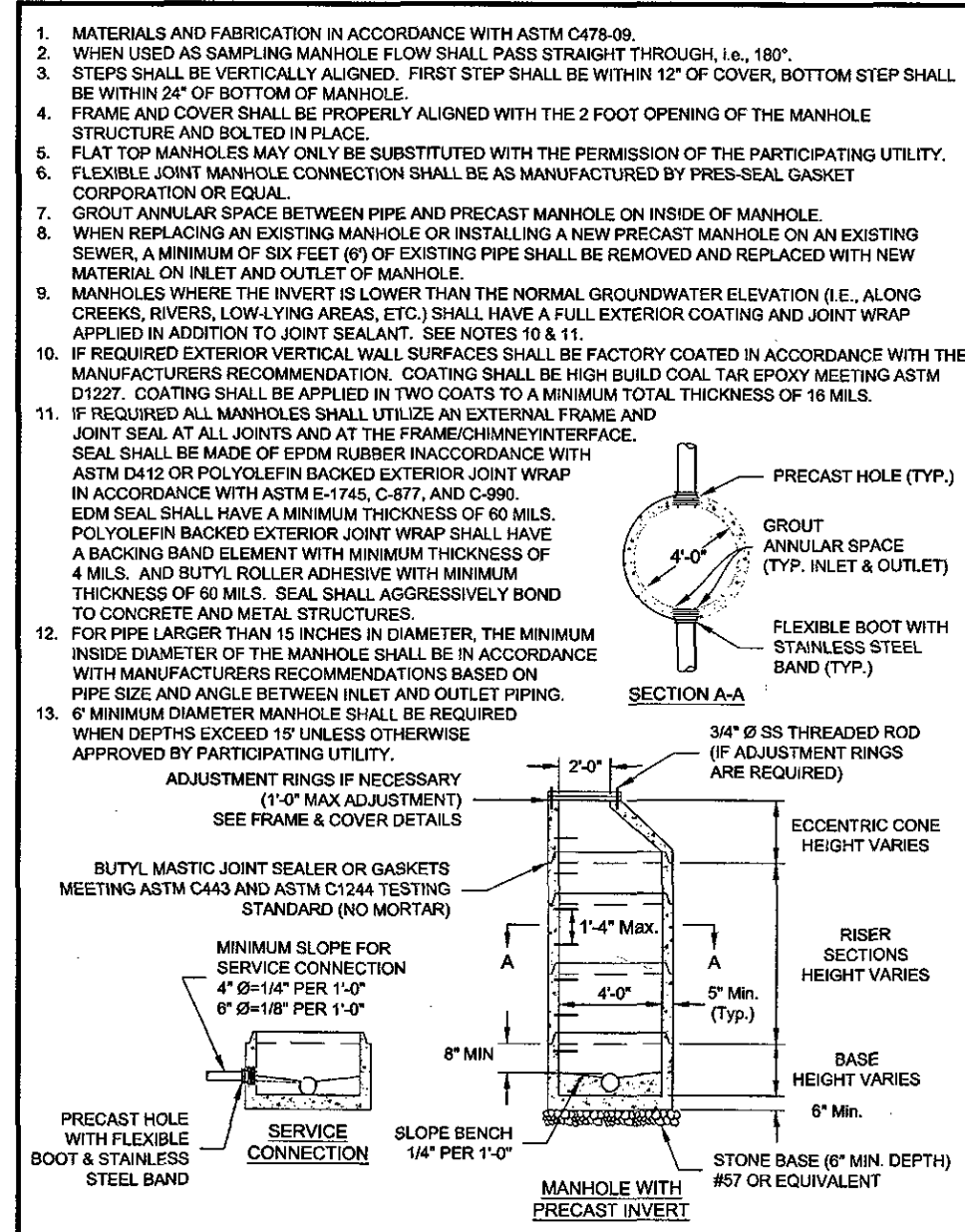


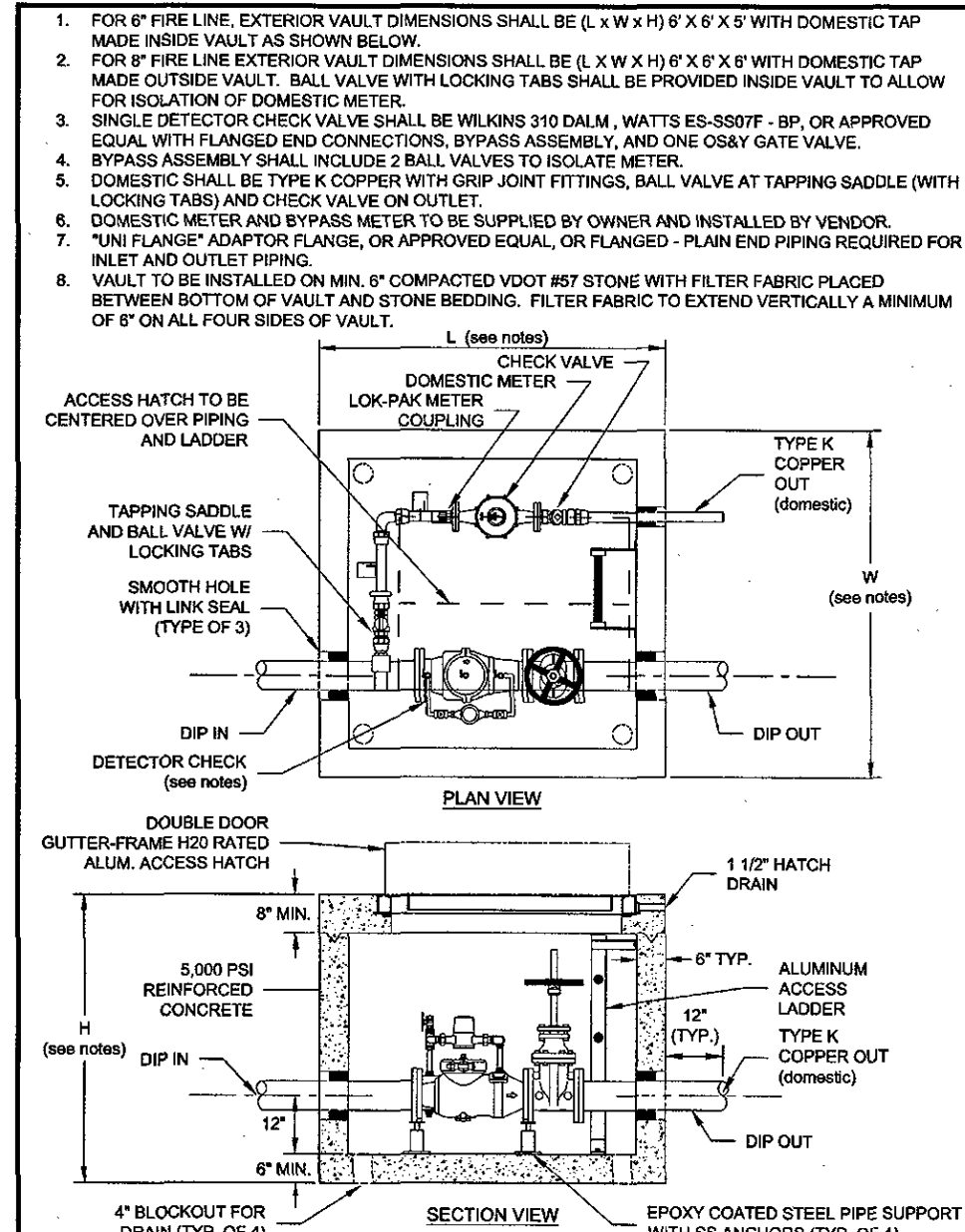
- NOTES:
1. MOUNTING HEIGHT SHALL BE MINIMUM OF 7' FROM BOTTOM OF SIGN TO NEAR EDGE OF PAVEMENT OR TOP OF NEAR CURB.
 2. LOCATE SIGNS AT EACH END OF FIRE LANE AND EVENLY SPACED BETWEEN AT NO MORE THAN 100' O.C. SIGNS SHALL BE AS APPROPRIATE TO SIGN LOCATION.
 3. POST SHALL BE 1/2" DIA. STEEL, ELEVEN FEET (11') IN LENGTH WITH THREE (3) HOLES DRILLED ONE HALF INCH (1/2") FROM EACH END OF POST (OR FIVE FEET AND SIX INCHES - 56"). FINISH SHALL BE BLACK ALKALOID AND RESIN GLOSS BASED ON ENAMEL. CONTRACTOR SHALL VERIFY WITH LOCALITY.

FIRE LANE SIGN (FS)

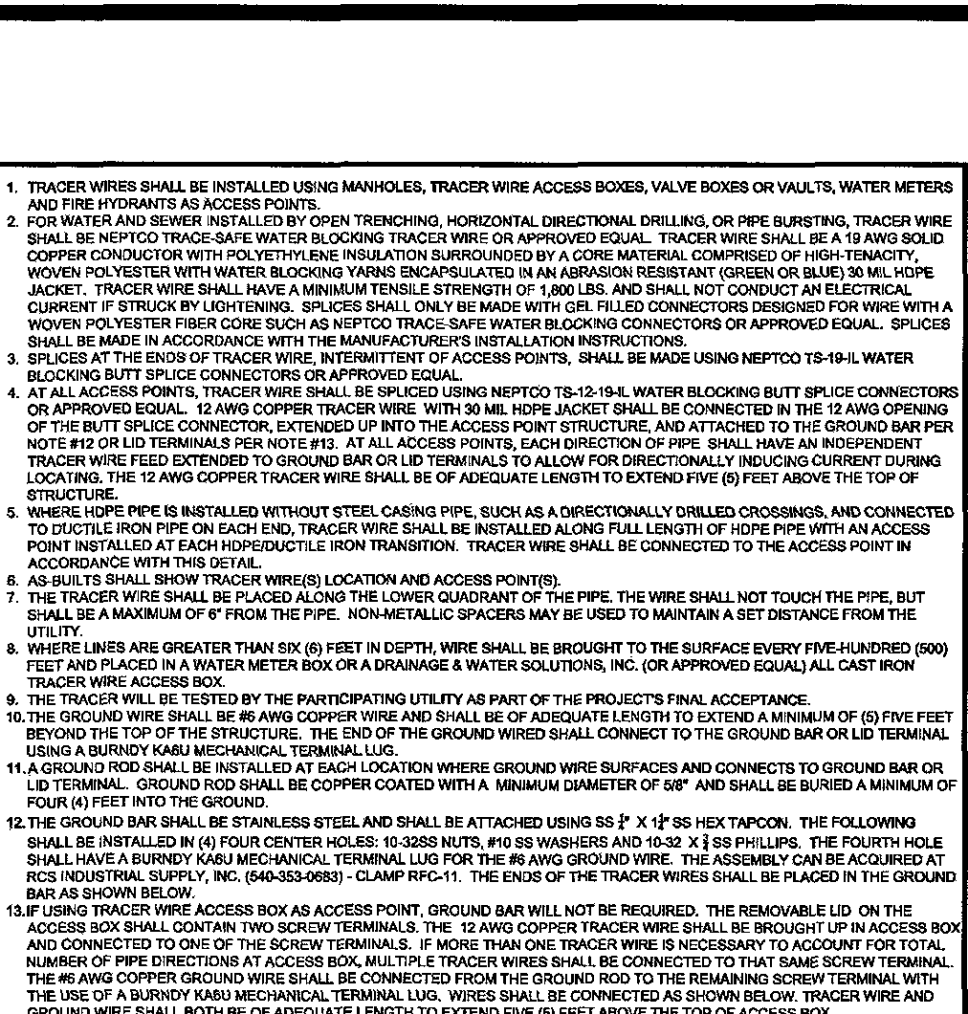
NO SCALE



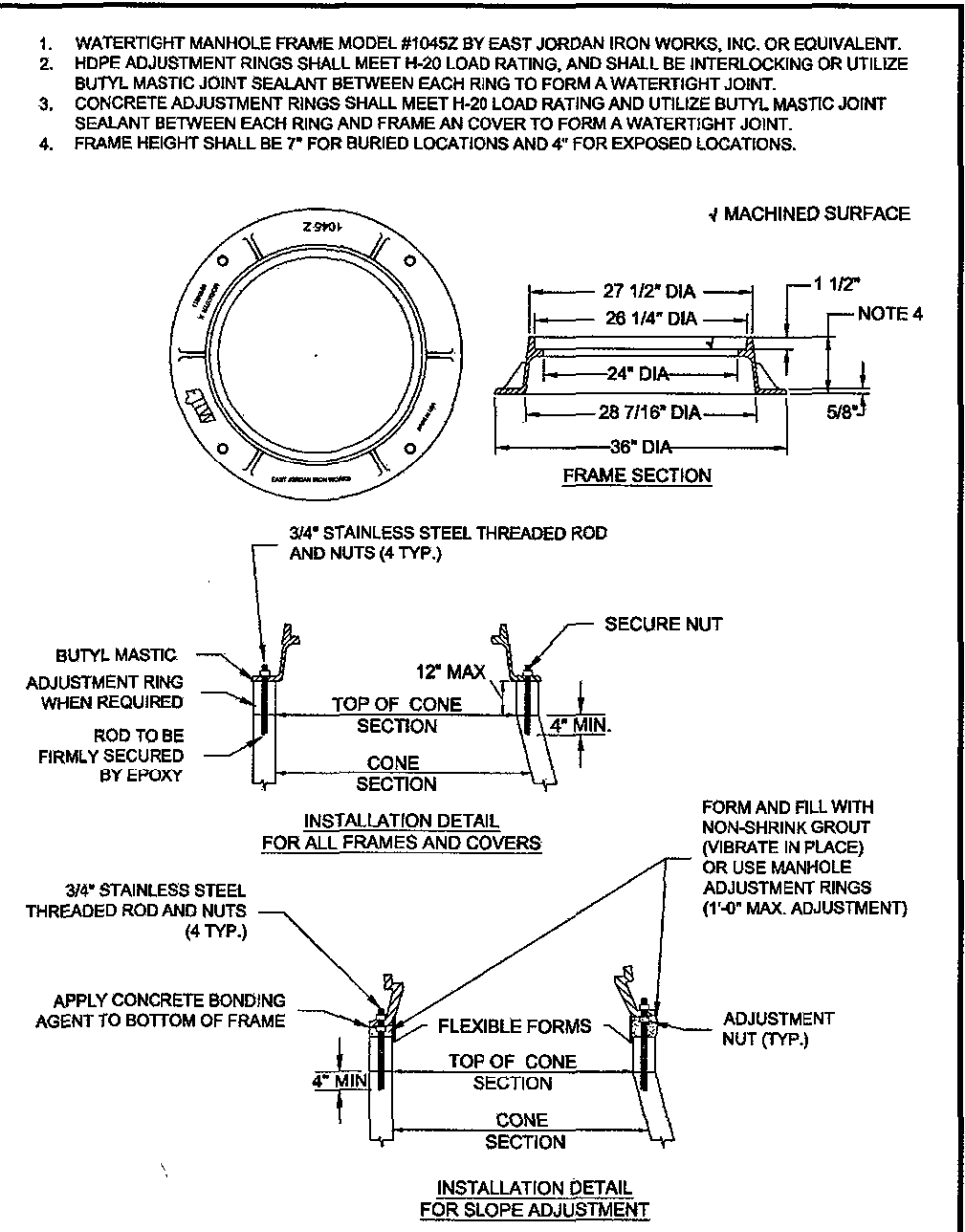
WESTERN VIRGINIA REGIONAL - CONSTRUCTION DETAIL
4' STANDARD MANHOLE FOR PIPE 15" OR SMALLER (FOR DEPTHS UP TO 15 FEET)
01/01/15 S-1



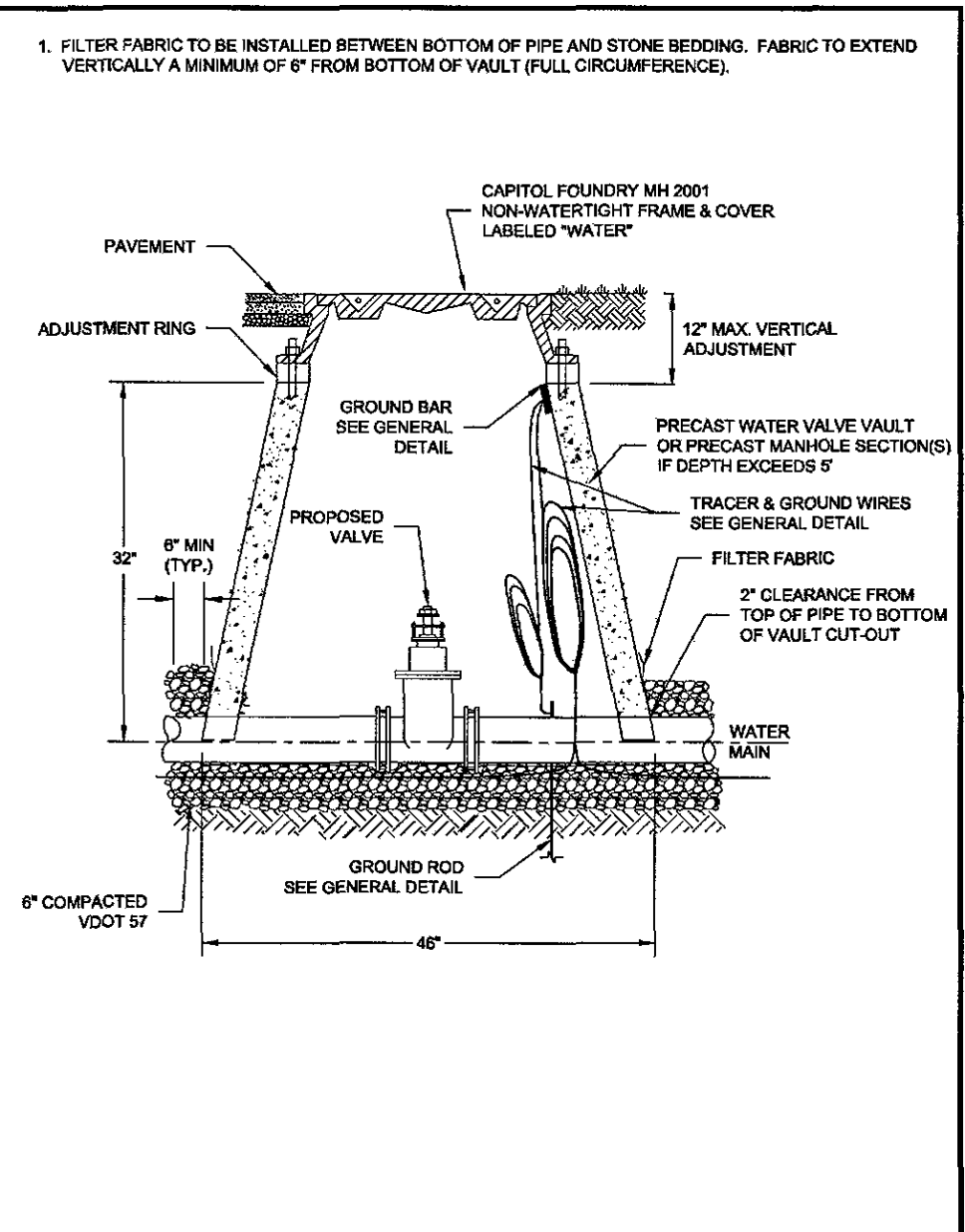
WESTERN VIRGINIA REGIONAL - CONSTRUCTION DETAIL
COMMERCIAL METER VAULT
02/10/15 W-7



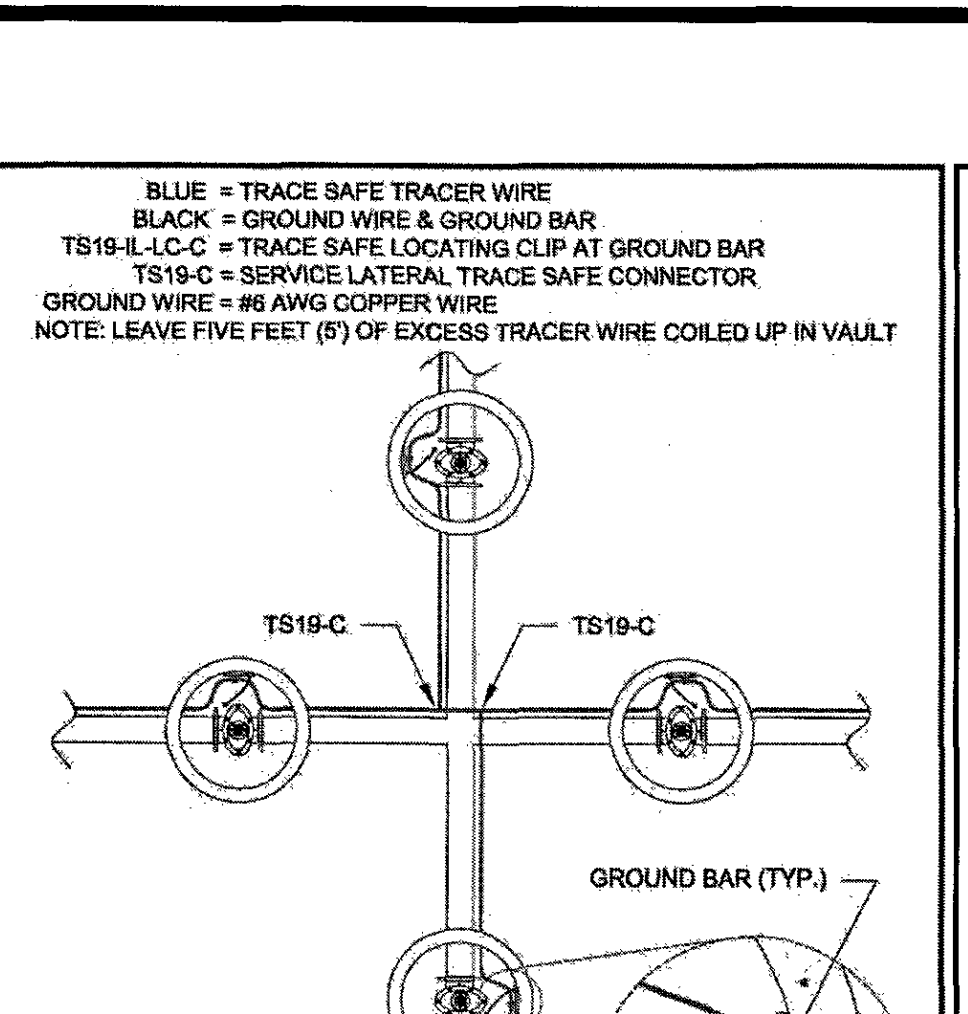
WESTERN VIRGINIA REGIONAL - CONSTRUCTION DETAIL
TRACER WIRE FOR NON-METALLIC PRESSURE PIPE
01/01/14 G-4



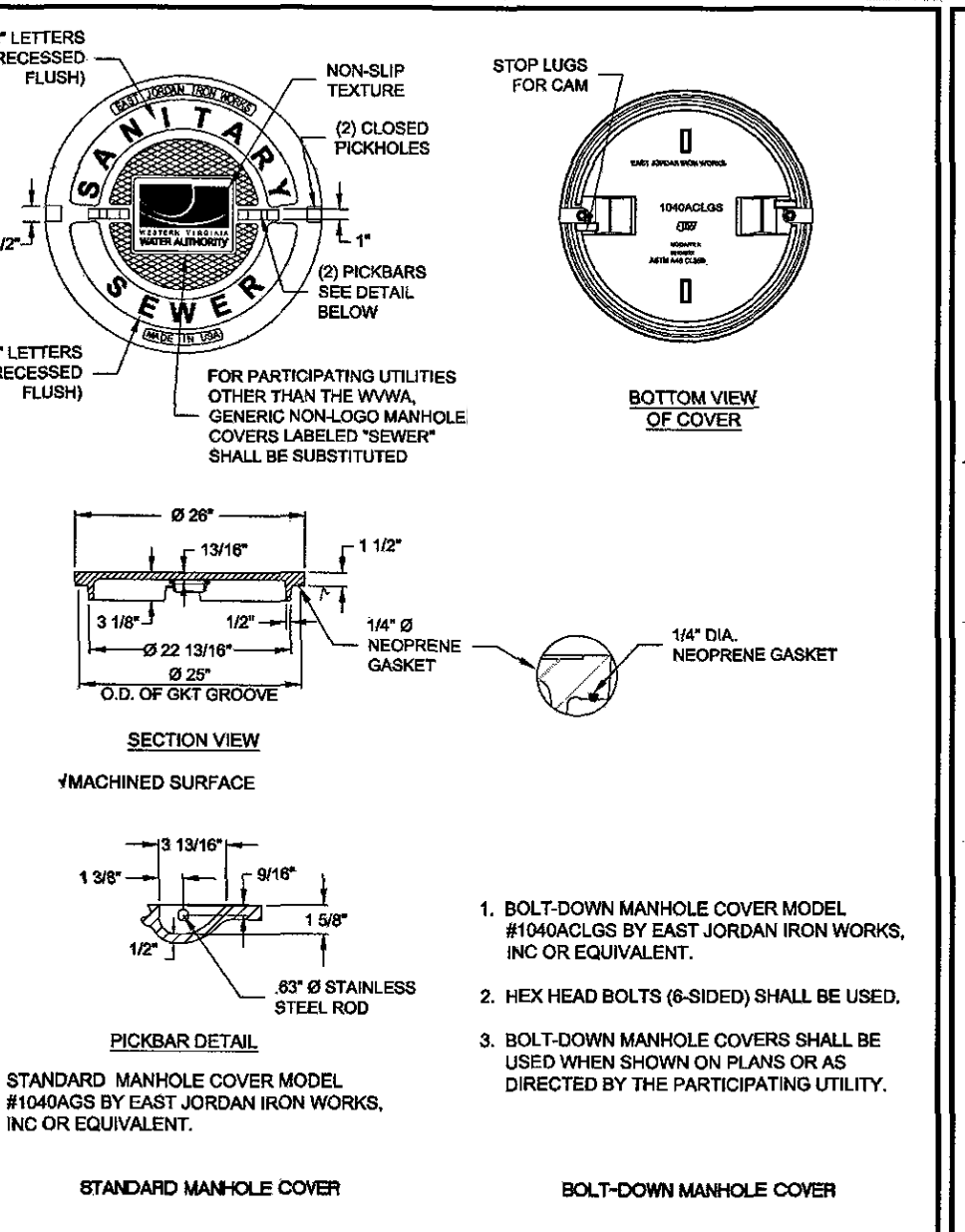
WESTERN VIRGINIA REGIONAL - CONSTRUCTION DETAIL
WATER TIGHT MANHOLE FRAME
01/01/14 S-4



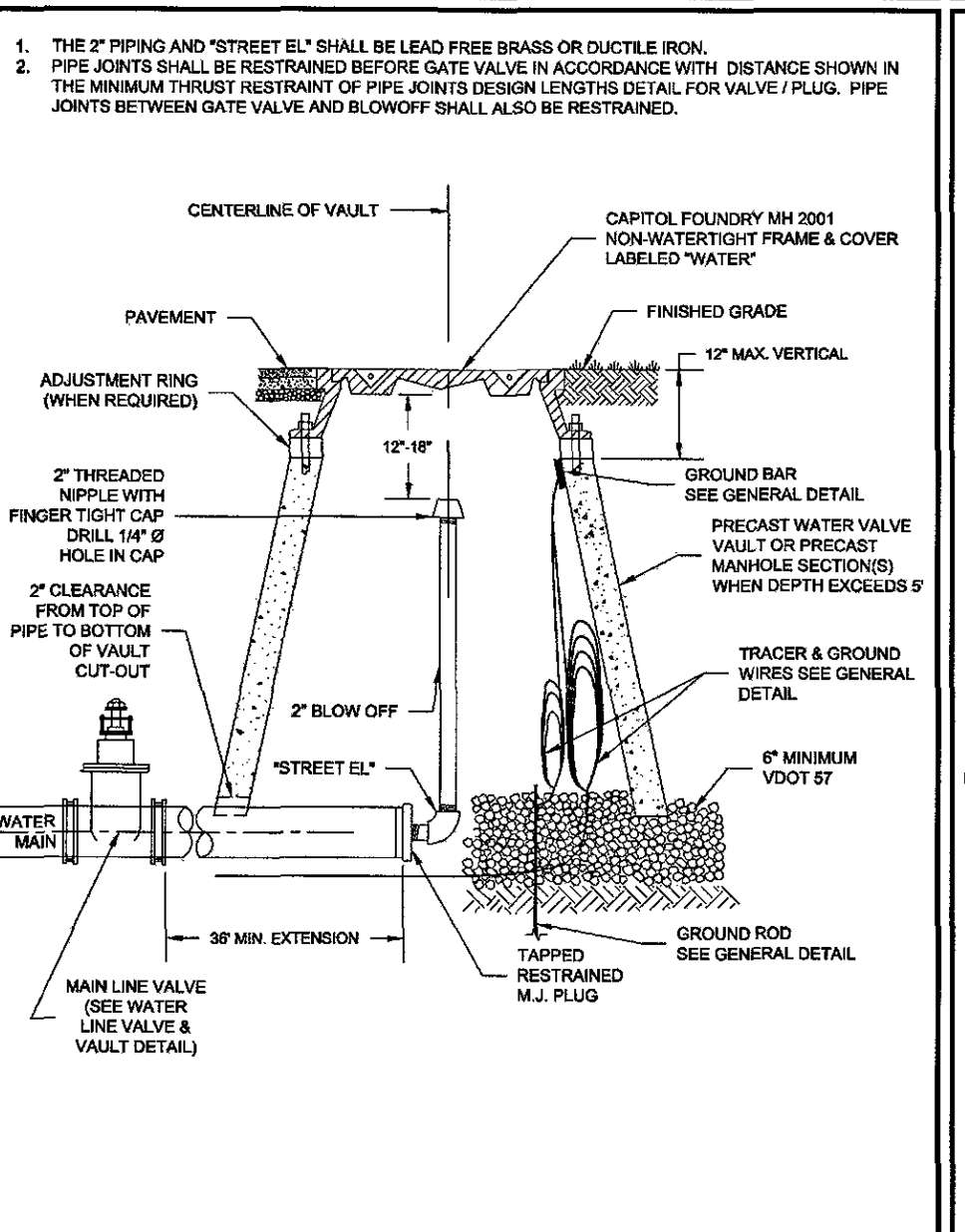
WESTERN VIRGINIA REGIONAL - CONSTRUCTION DETAIL
WATER LINE VALVE & VAULT
01/01/14 W-9



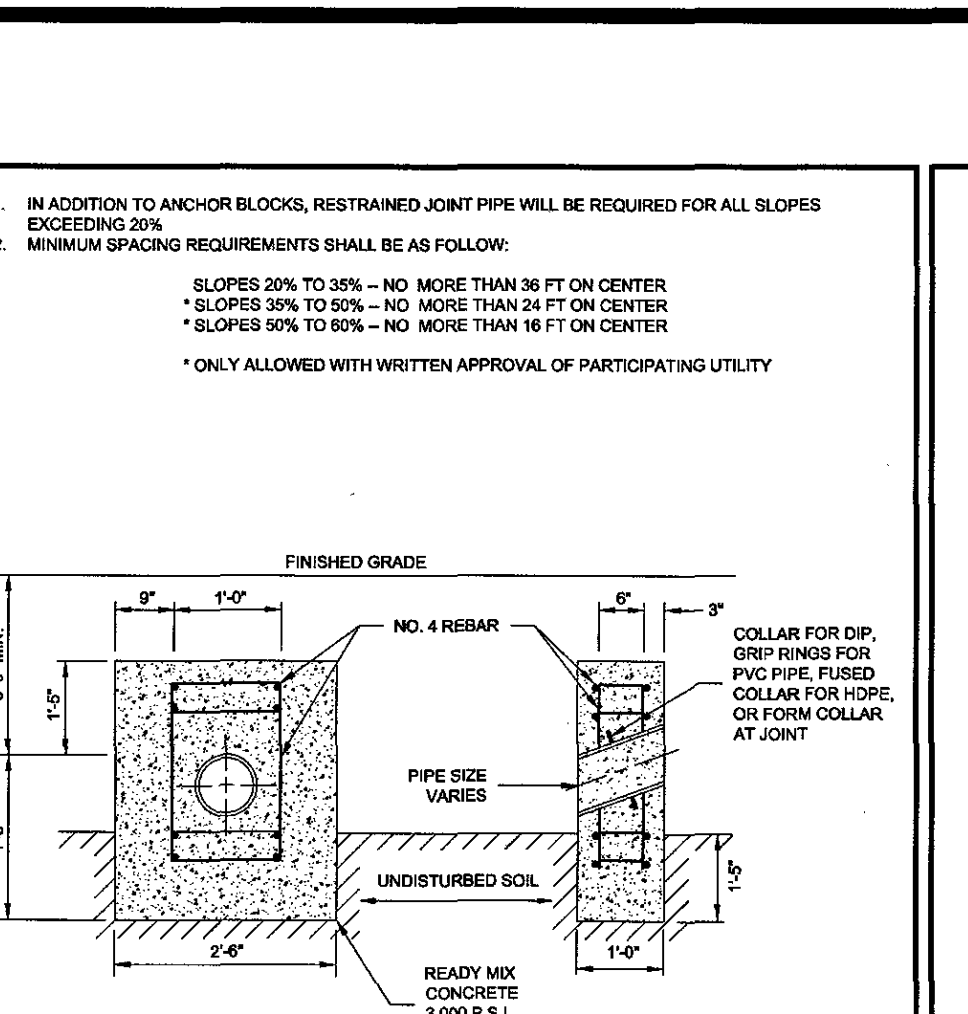
WESTERN VIRGINIA REGIONAL - CONSTRUCTION DETAIL
BLUE = TRACE SAFE TRACER WIRE
01/01/14 G-4A



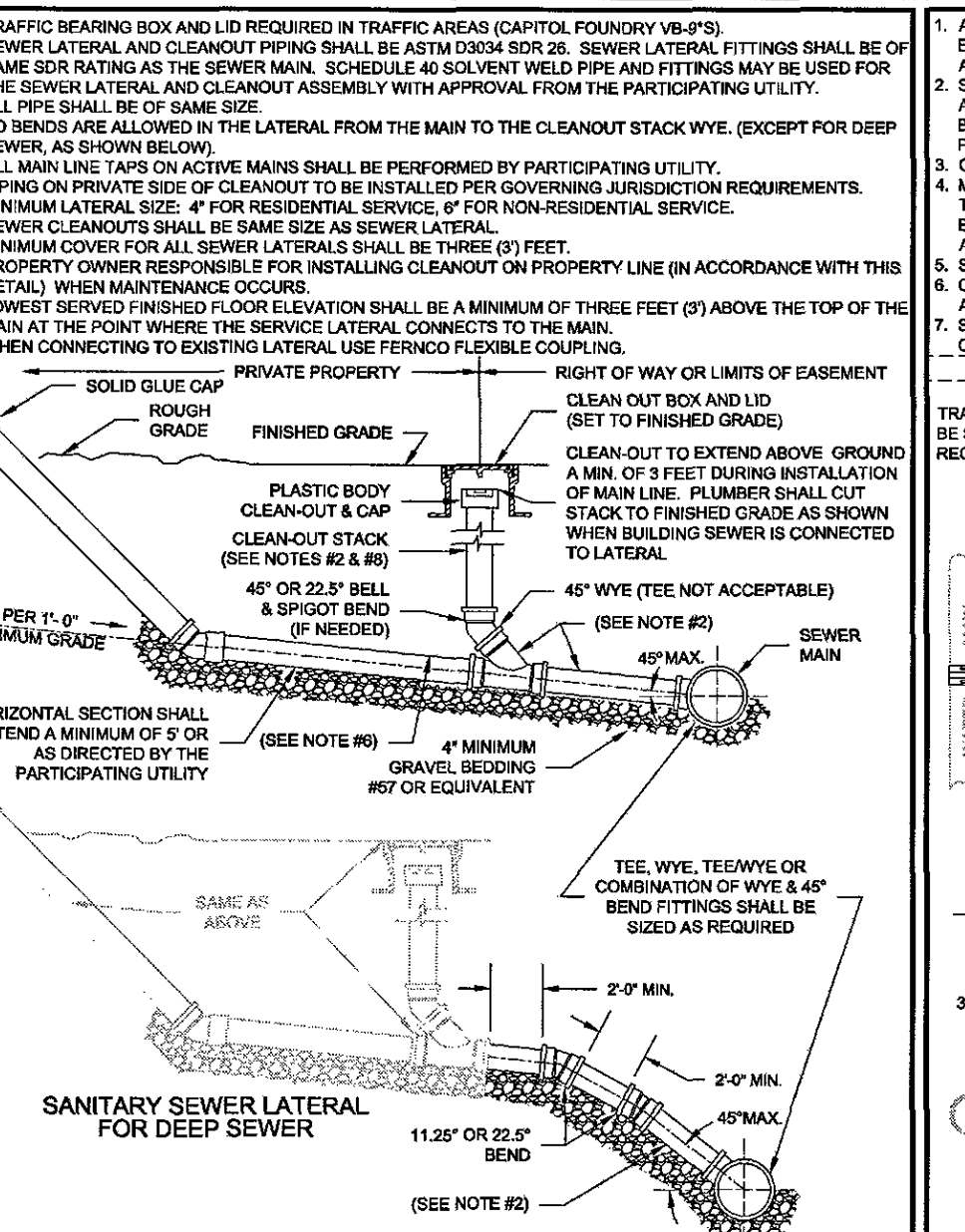
WESTERN VIRGINIA REGIONAL - CONSTRUCTION DETAIL
SANITARY SEWER LATERAL
01/01/14 S-6



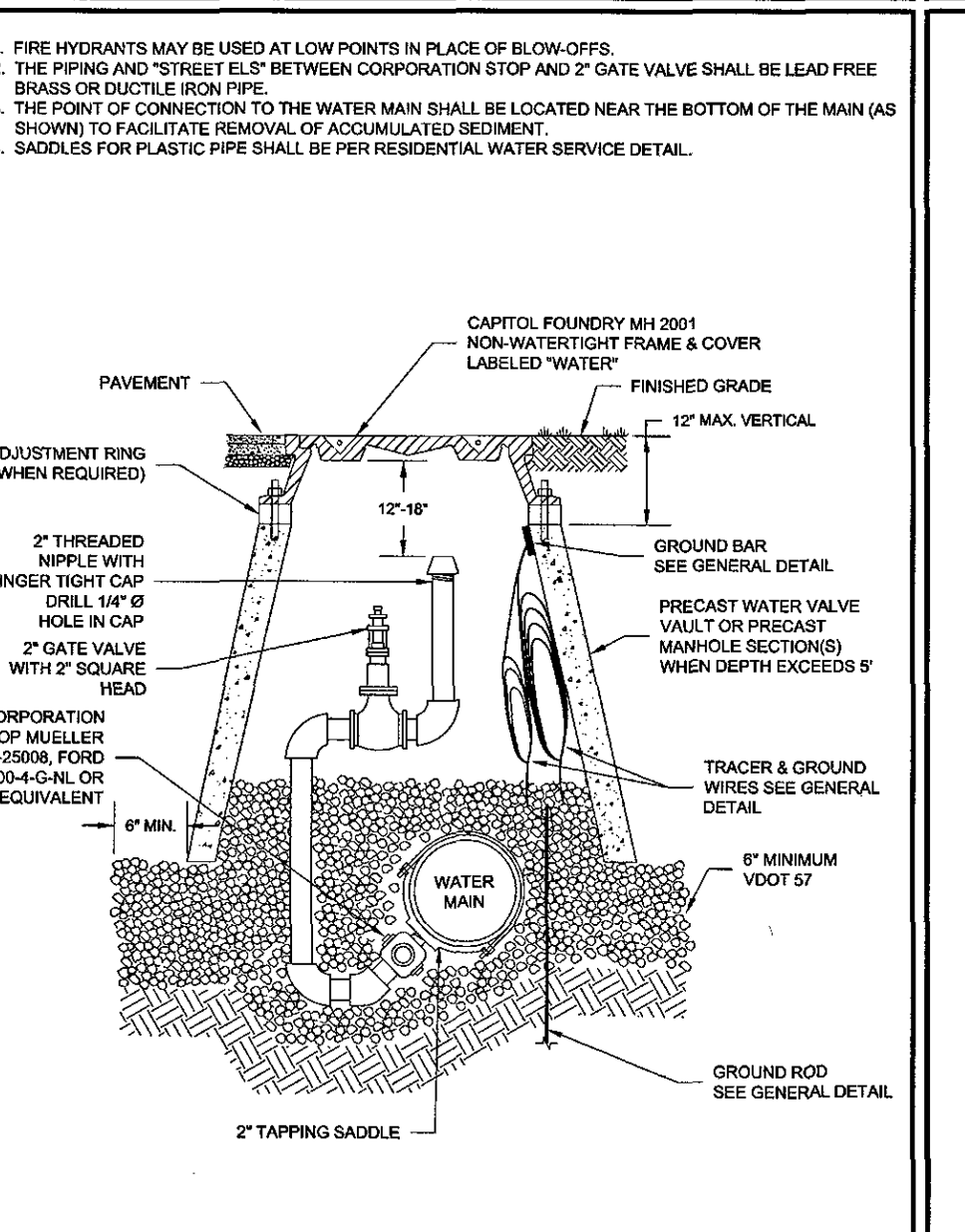
WESTERN VIRGINIA REGIONAL - CONSTRUCTION DETAIL
TEMPORARY END OF LINE BLOW-OFF ASSEMBLY
01/01/14 W-11



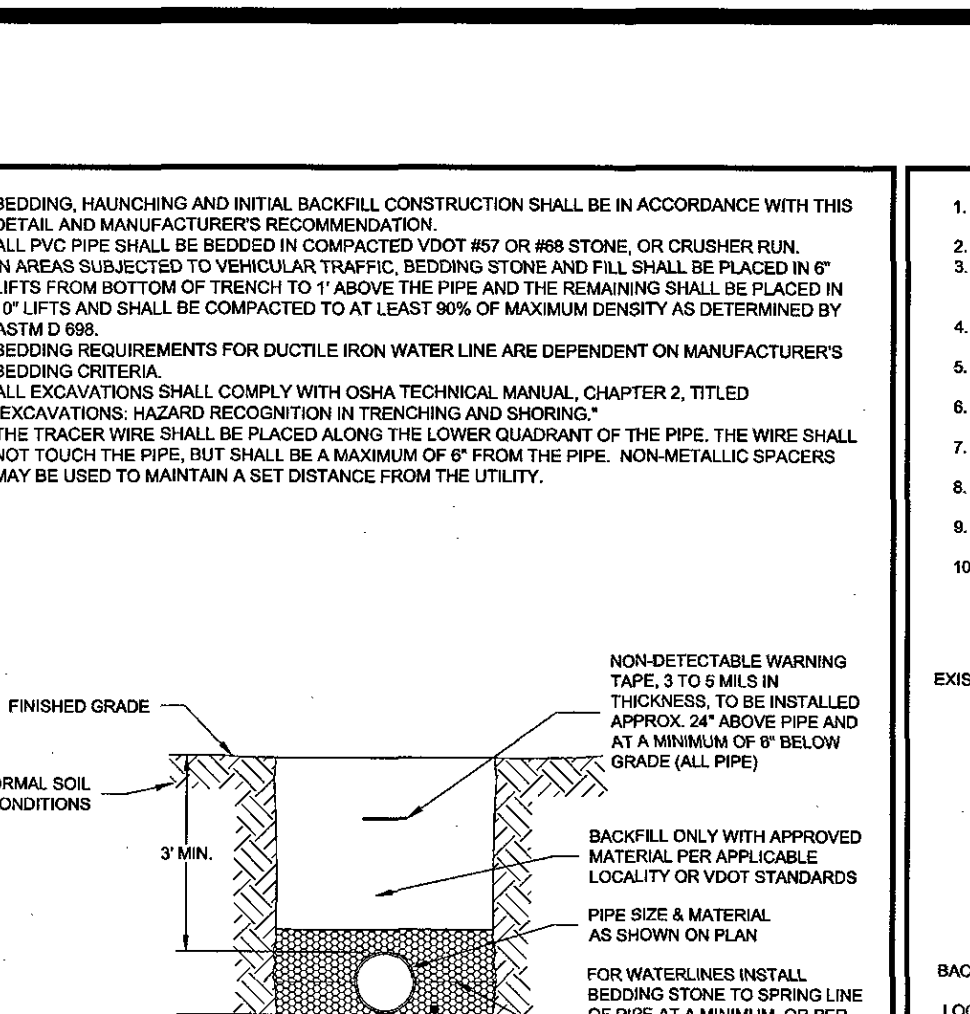
WESTERN VIRGINIA REGIONAL - CONSTRUCTION DETAIL
ANCHOR BLOCK
01/01/14 G-10



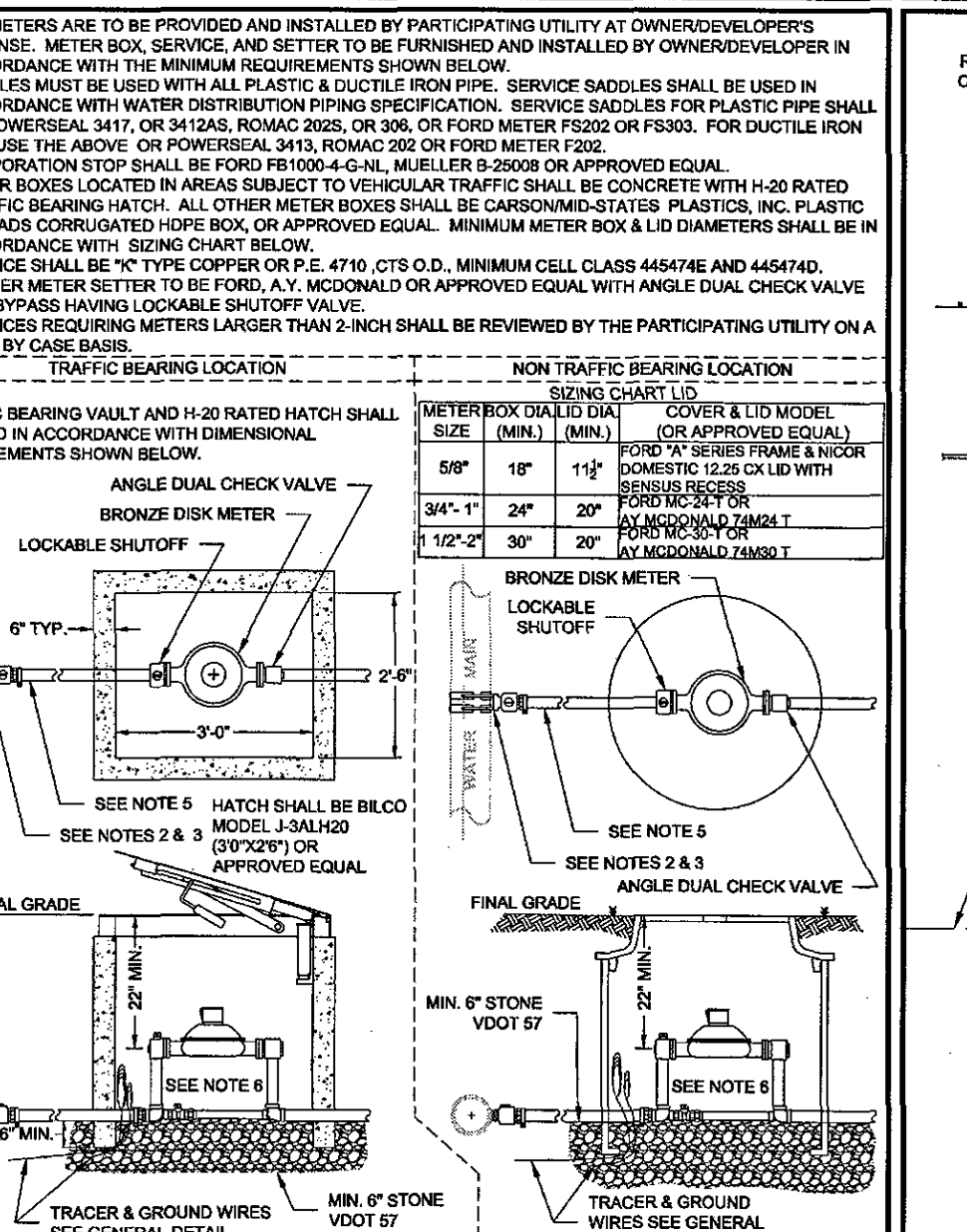
WESTERN VIRGINIA REGIONAL - CONSTRUCTION DETAIL
SANITARY SEWER LATERAL
01/01/14 S-6



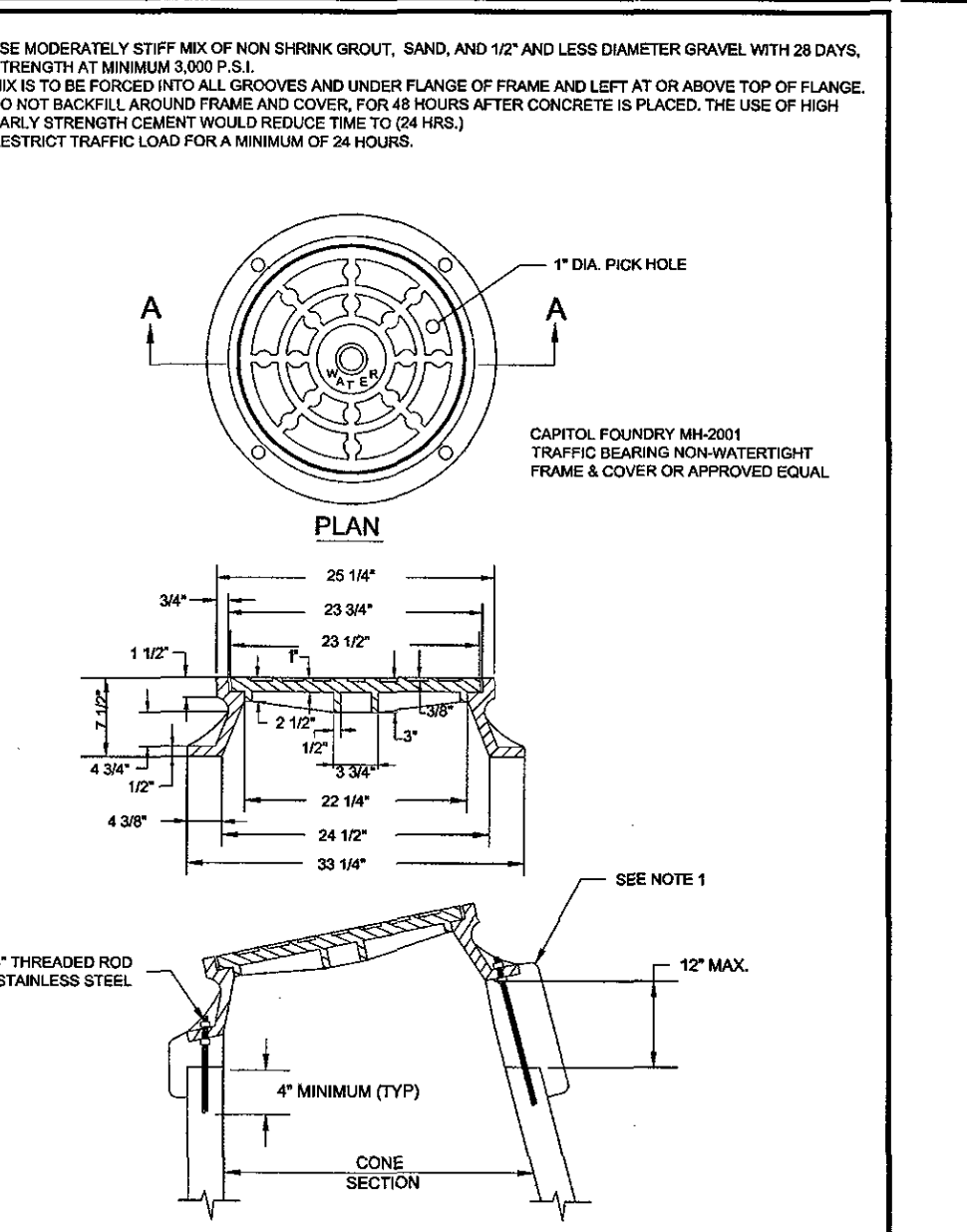
WESTERN VIRGINIA REGIONAL - CONSTRUCTION DETAIL
TEMPORARY END OF LINE BLOW-OFF ASSEMBLY
01/01/14 W-11



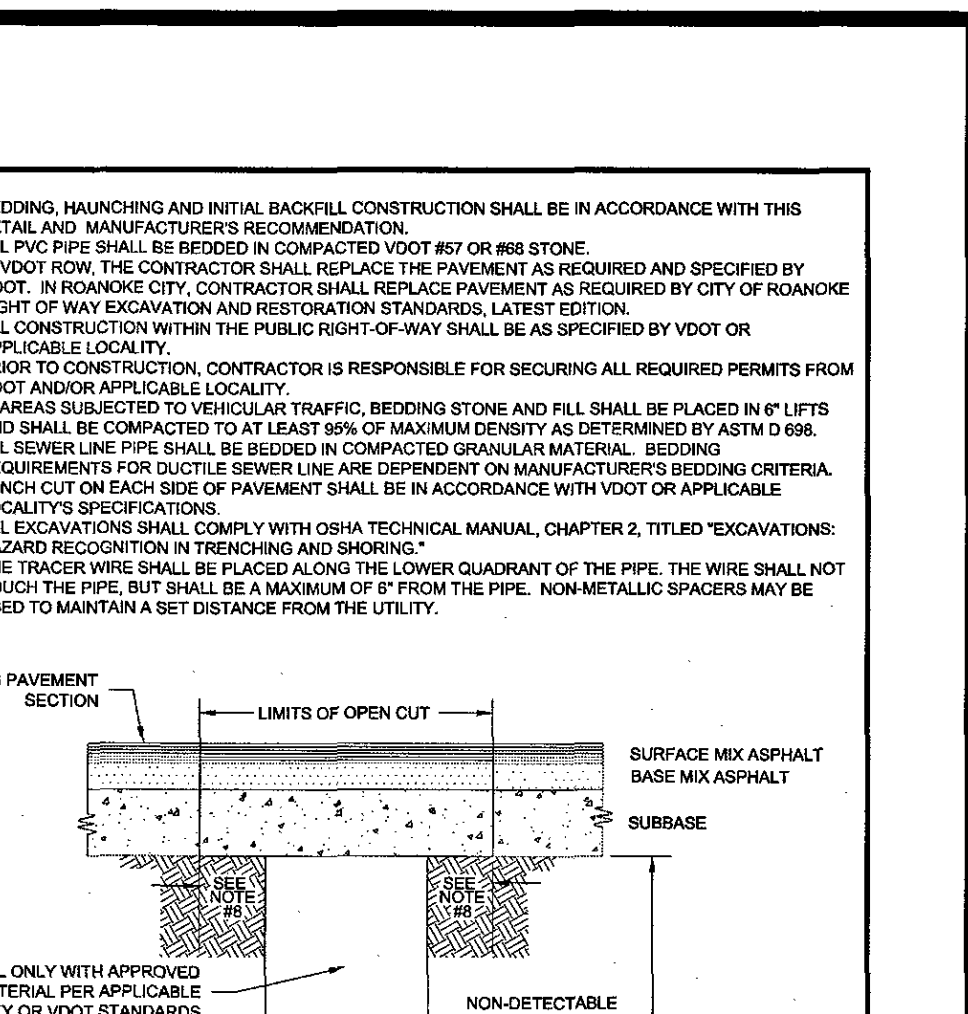
WESTERN VIRGINIA REGIONAL - CONSTRUCTION DETAIL
BEDDING AND BACKFILL OUTSIDE OF PAVED AREAS
01/01/15 G-11



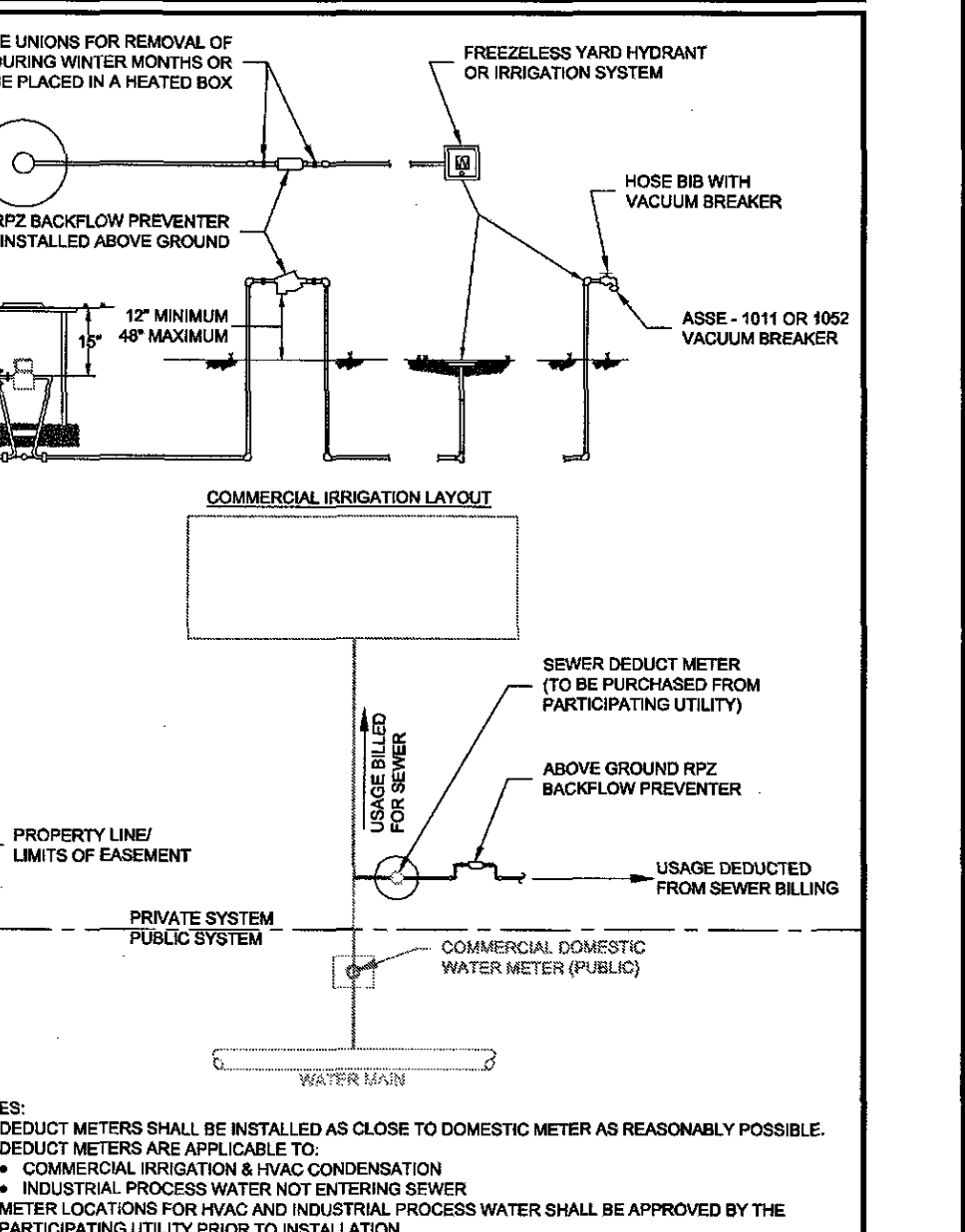
WESTERN VIRGINIA REGIONAL - CONSTRUCTION DETAIL
COMMERCIAL WATER SERVICE METER SIZES 5/8" - 2"
01/01/17 W-5



WESTERN VIRGINIA REGIONAL - CONSTRUCTION DETAIL
VAULT FRAME AND COVER
01/01/14 W-16



WESTERN VIRGINIA REGIONAL - CONSTRUCTION DETAIL
BEDDING AND BACKFILL UNDER PAVEMENT AND IN RIGHT-OF-WAY
01/01/15 G-12



WESTERN VIRGINIA REGIONAL - CONSTRUCTION DETAIL
COMMERCIAL SEWER DEDUCTION METER INSTALLATION
01/01/14 W-6

LUMSDEN ASSOCIATES, P.C.
ENGINEERS-SURVEYORS-PLANNERS
ROANOKE, VIRGINIA

4664 BRAMBLETON AVENUE
PO. BOX 20669
ROANOKE, VIRGINIA 24018
PHONE: (540) 774-4411
FAX: (540) 772-9445
EMAIL: MAIL@LUMSDENPC.COM

HOWARD P. BOGGS, II
Lic. No. 000820
9/12/17

COMPREHENSIVE DEVELOPMENT PLAN
FOR
JEFFERSON HILLS ASSISTED LIVING
NEW MILLENNIUM SENIOR LIVING COMMUNITIES
SITUATED ALONG OGDEN ROAD, SW
CITY OF ROANOKE, VIRGINIA

DATE: September 12, 2017
SCALE: AS SHOWN
COMMISSION NO.: 15-079
SHEET 15 OF 16

REVISIONS
NO. DATE DESCRIPTION
1 1 2 3 4 5