

GENERAL UTILITY NOTES:

1. THE LOCATION, DEPTH, AND ALIGNMENT OF EXISTING UNDERGROUND UTILITIES IS BASED UPON VISUAL FIELD FEATURES AND AVAILABLE RECORDS AND SHOULD BE CONSIDERED APPROXIMATE. THERE MAY BE UTILITIES WHICH AFFECT THE PROPERTY NOT SHOWN HEREON. CONTRACTOR SHALL CALL "MISS UTILITY" TO VERIFY LOCATION OF ANY UNDERGROUND UTILITIES PRIOR TO ANY CONSTRUCTION.
2. CONSTRUCTION MATERIALS AND METHODS SHALL CONFORM TO WVA AND ROANOKE COUNTY STANDARDS.
3. THE CONTRACTOR SHALL FIELD VERIFY THE LOCATION AND INVERTS OF ALL EXISTING MANHOLES, GAS LINES, AND OTHER UTILITY LINES. UTILITIES SHOWN ON PLAN BASED ON OLD UTILITY PLANS AVAILABLE FROM KOPPERS.
4. CONTRACTOR TO COORDINATE WITH SALEM UTILITY COMPANIES FOR SERVICE LINES.
5. CONTRACTOR SHALL USE CAUTION DURING CONSTRUCTION TO NOT DISTURB EXISTING UTILITIES TO REMAIN. ANY DAMAGE TO REMAINING UTILITIES SHALL BE REPAIRED.
6. ALL NEW UTILITIES TO BE INSTALLED UNDERGROUND.

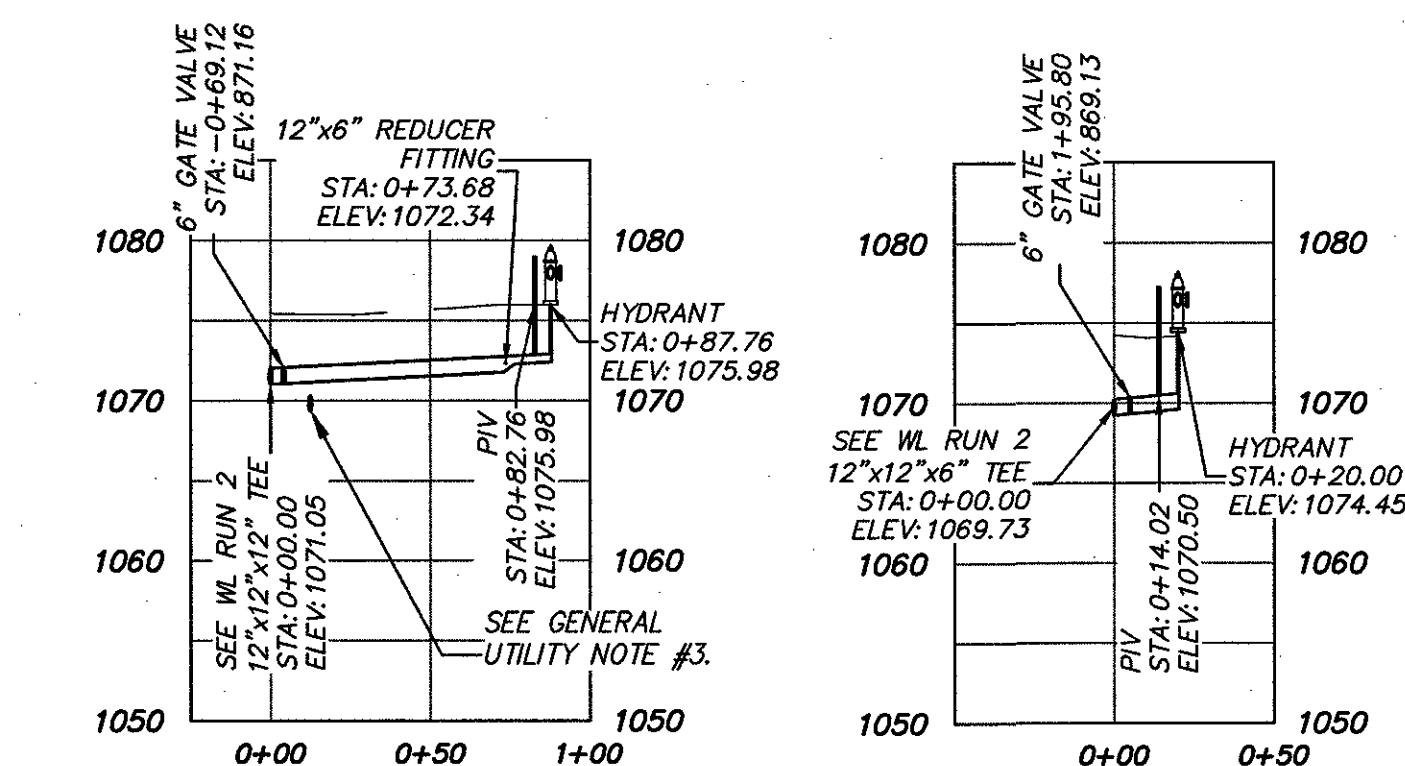
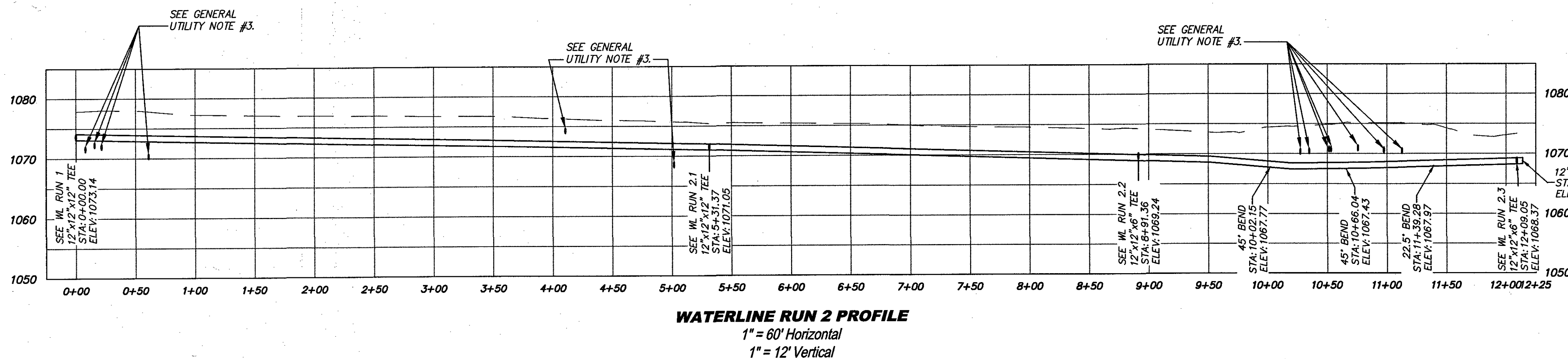
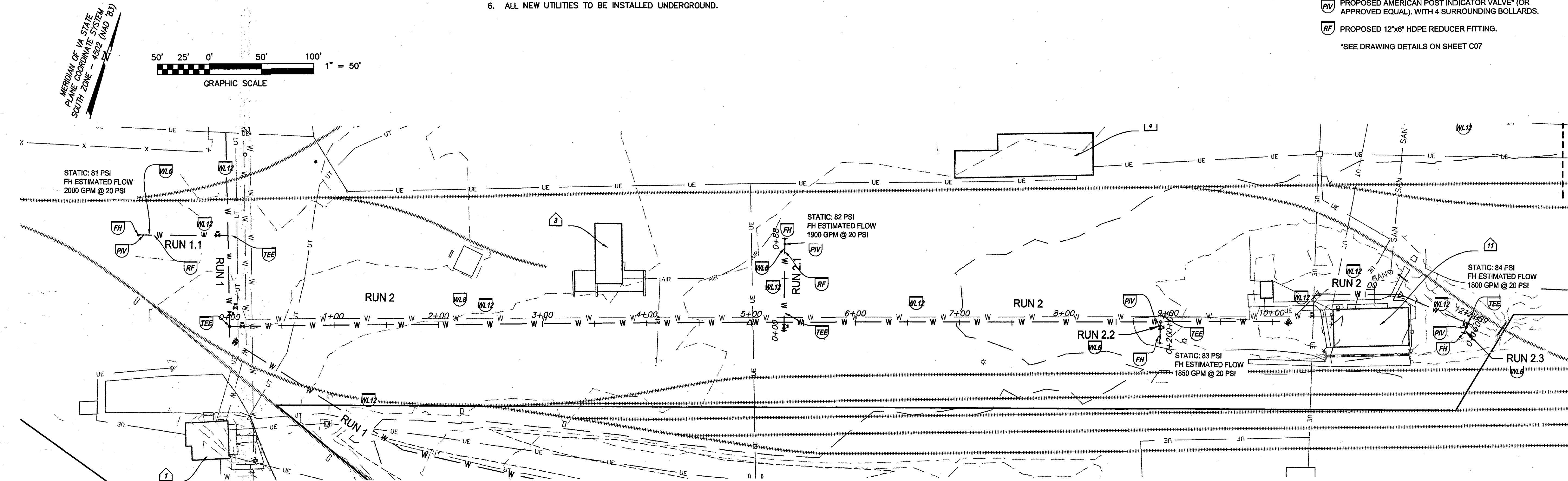
WATERLINE NOTES:

- WL#1: CONTRACTOR SHALL COORDINATE WITH WVA PRIOR TO CONSTRUCTION.
- WL#2: CONTRACTOR SHALL VERIFY LOCATION AND DEPTH OF EXISTING 8" WATER LINE PRIOR TO CONSTRUCTION. (ASSUMED 4.0' DEPTH).
- WL#3: MAINTAIN MINIMUM 3.0' COVER ON PROPOSED WATER LINE.

SITE UTILITY LEGEND

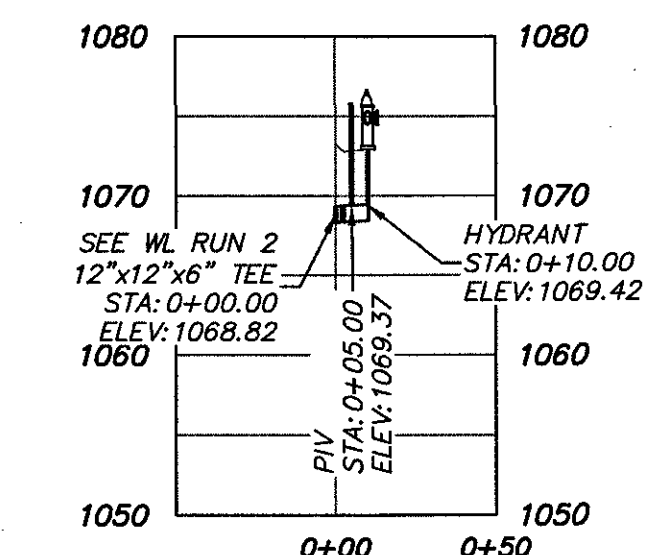
- FH** PROPOSED FIRE HYDRANT, WITH 4 SURROUNDING BOLLARDS. (W-17")
- TEE** PROPOSED TEE. SEE PROFILES FOR SPECIFIC SIZES.
- WL12** PROPOSED 12" NPS HDPE, DRISCOPEX 1500 (OR APPROVED EQUAL). SEE WATERLINE PROFILE.
- WL8** PROPOSED 8" NPS HDPE, DRISCOPEX 1500 (OR APPROVED EQUAL). SEE WATERLINE PROFILE.
- WL4** PROPOSED DOMESTIC 4" NPS HDPE, DRISCOPEX 1500 (OR APPROVED EQUAL). SEE WATERLINE PROFILE.
- WV** EXISTING WATER VAULT MODIFIED W/ 8" FIRE SERVICE AND DOMESTIC SERVICE (SIZED BY FUTURE COUNTS SHEET AND INDUSTRIAL DEMAND). (W-7")
- PIV** PROPOSED AMERICAN POST INDICATOR VALVE* (OR APPROVED EQUAL), WITH 4 SURROUNDING BOLLARDS.
- RF** PROPOSED 12"x6" HDPE REDUCER FITTING.

*SEE DRAWING DETAILS ON SHEET C07

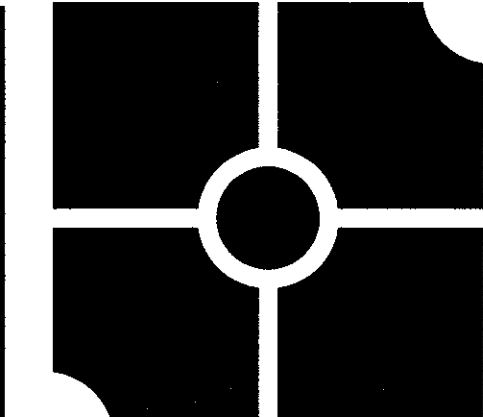


WATERLINE RUN 2.1 PROFILE 1" = 60' Horizontal, 1" = 12' Vertical

WATERLINE RUN 2.2 PROFILE 1" = 60' Horizontal, 1" = 12' Vertical



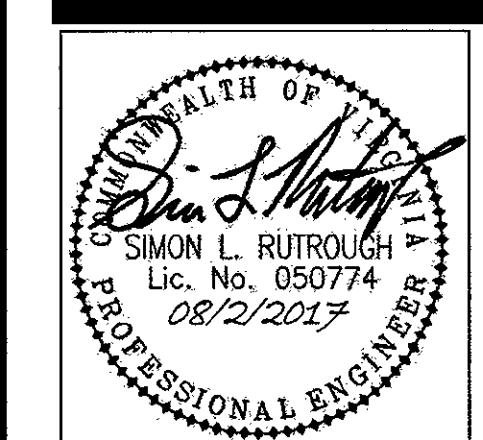
WATERLINE RUN 2.3 PROFILE 1" = 60' Horizontal, 1" = 12' Vertical



parker
DESIGN GROUP

2122 Carolina Ave, SW 1915-B W. Cary Street
Roanoke, VA 24014 Richmond, VA 23220
Ph: 540-387-1153 Phone: 804-358-2947
Fax: 540-389-5767 Fax: 804-359-9645
www.parkerdgd.com

These documents are the property of Parker Design Group (PDG) and may not be reproduced or used without the express permission of PDG. Any reuse of these documents without authorization of PDG will be at the sole risk of the individual or entity utilizing said documents.



**Koppers Waterline Extension
for Koppers Industries, Inc.**
4020 Koppers Road
Catawba Magisterial District
Roanoke County, Virginia

REVISIONS:

APPROVED

DESIGNED BY: JPA
DRAWN BY: JPA
CHECKED BY: SLR
SCALE: 1" = 50'
DATE: 07 April 2017

SHEET TITLE:

WATERLINE RUN 2
LAYOUT & PROFILES

C05
05 OF 09
PROJECT NUMBER:
16-0151-03