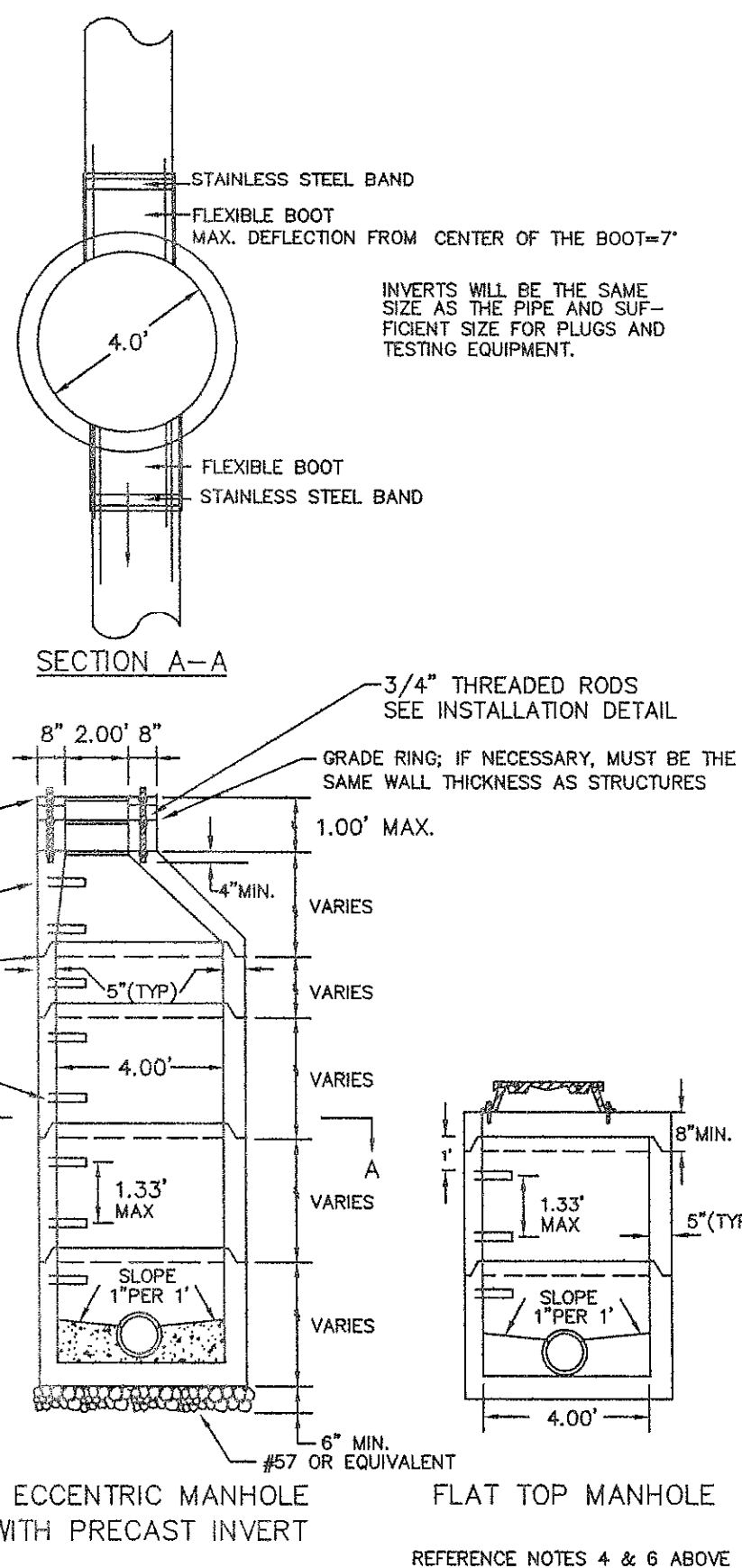


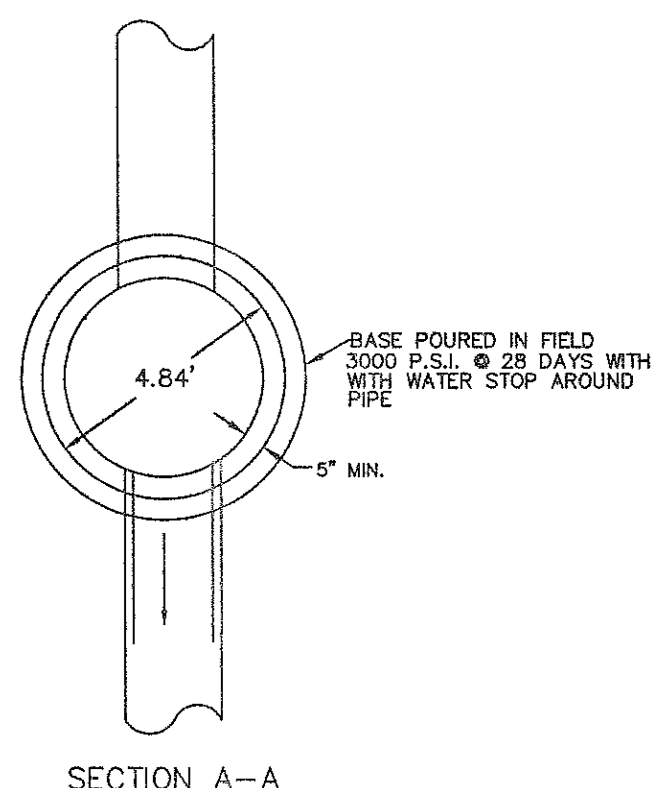
NOTES:

1. ALL MANHOLE FRAMES AND COVERS SHALL BE DEWEY BROTHERS, INC. MH-RCR-3000W IN NON-PAVED AREAS REQUIRING WATERPROOF FRAME & COVERS AND MH-RCR-3000EC-WT IN PAVED AREAS, OR APPROVED EQUAL.
2. THE FIRST STEP SHALL BE 1 FOOT FROM THE COVER.
3. THE FRAME AND COVER SHALL BE PROPERLY ALIGNED WITH THE 2 FOOT OPENING OF THE MANHOLE STRUCTURE AND BOLTED IN PLACE.
4. ALL SAMPLING MANHOLES SHALL BE CONSTRUCTED AS PER MANHOLE DETAILS. WHEN NECESSARY, THE FLAT TOP MANHOLE MAY BE SUBSTITUTED WITH ECCENTRIC OPENING AT STEPS.
5. FLAT TOP TO BE VDOT APPROVED FOR TRAFFIC BEARING WHEN USED IN AREAS SUBJECT TO TRAFFIC, 8" MIN.

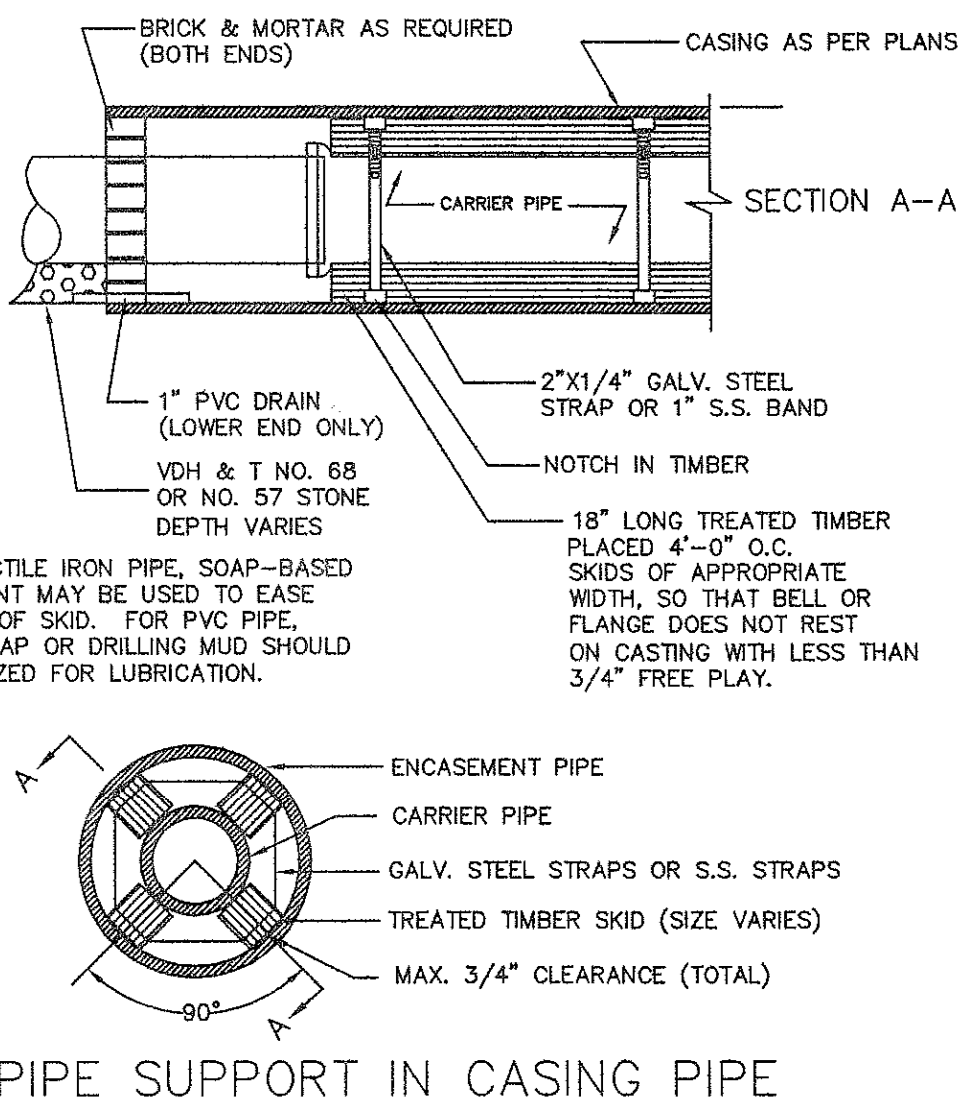
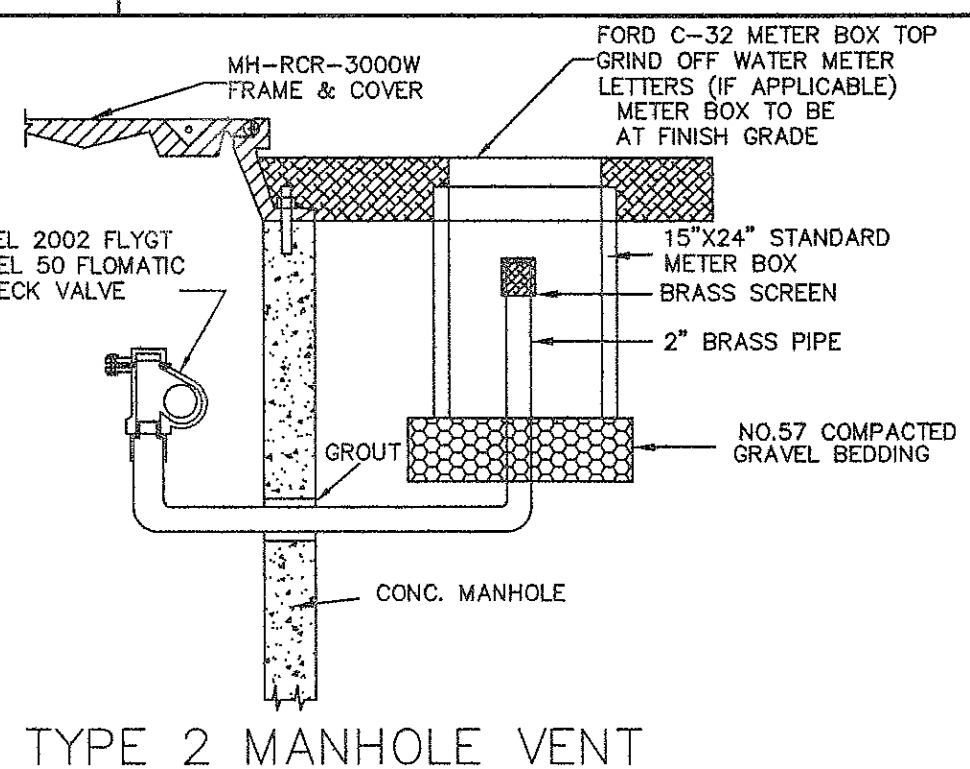
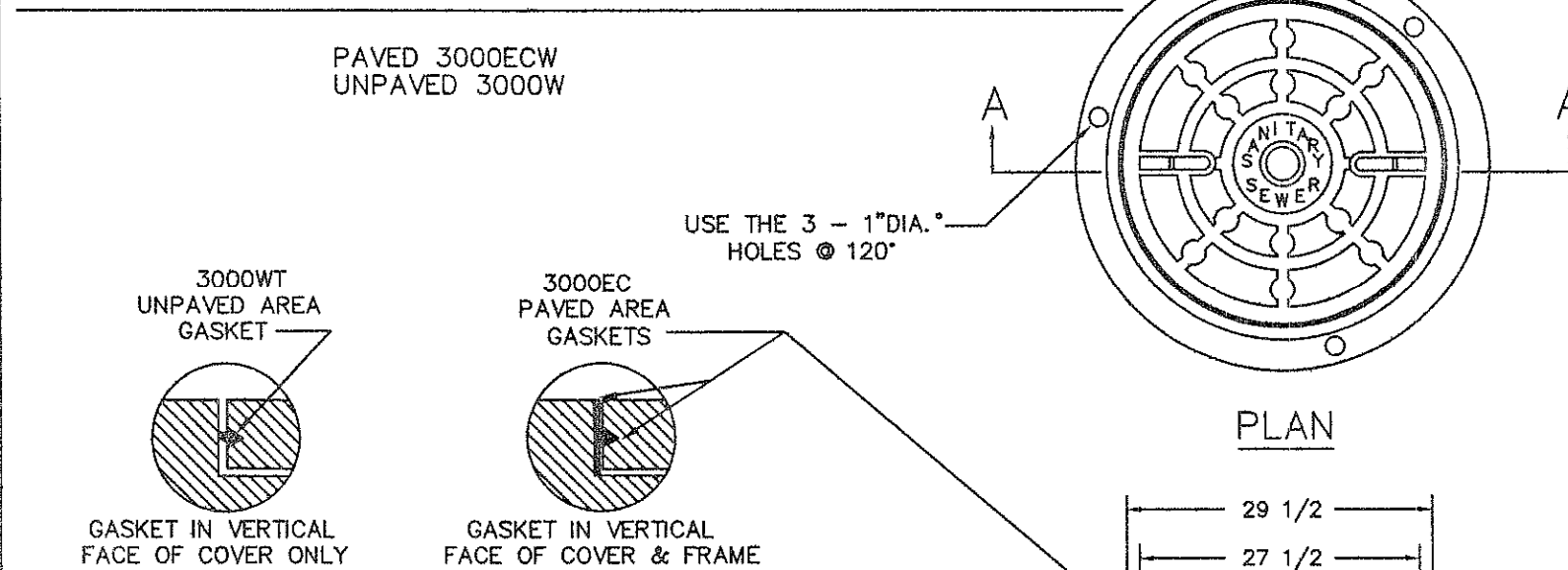


NOTES:

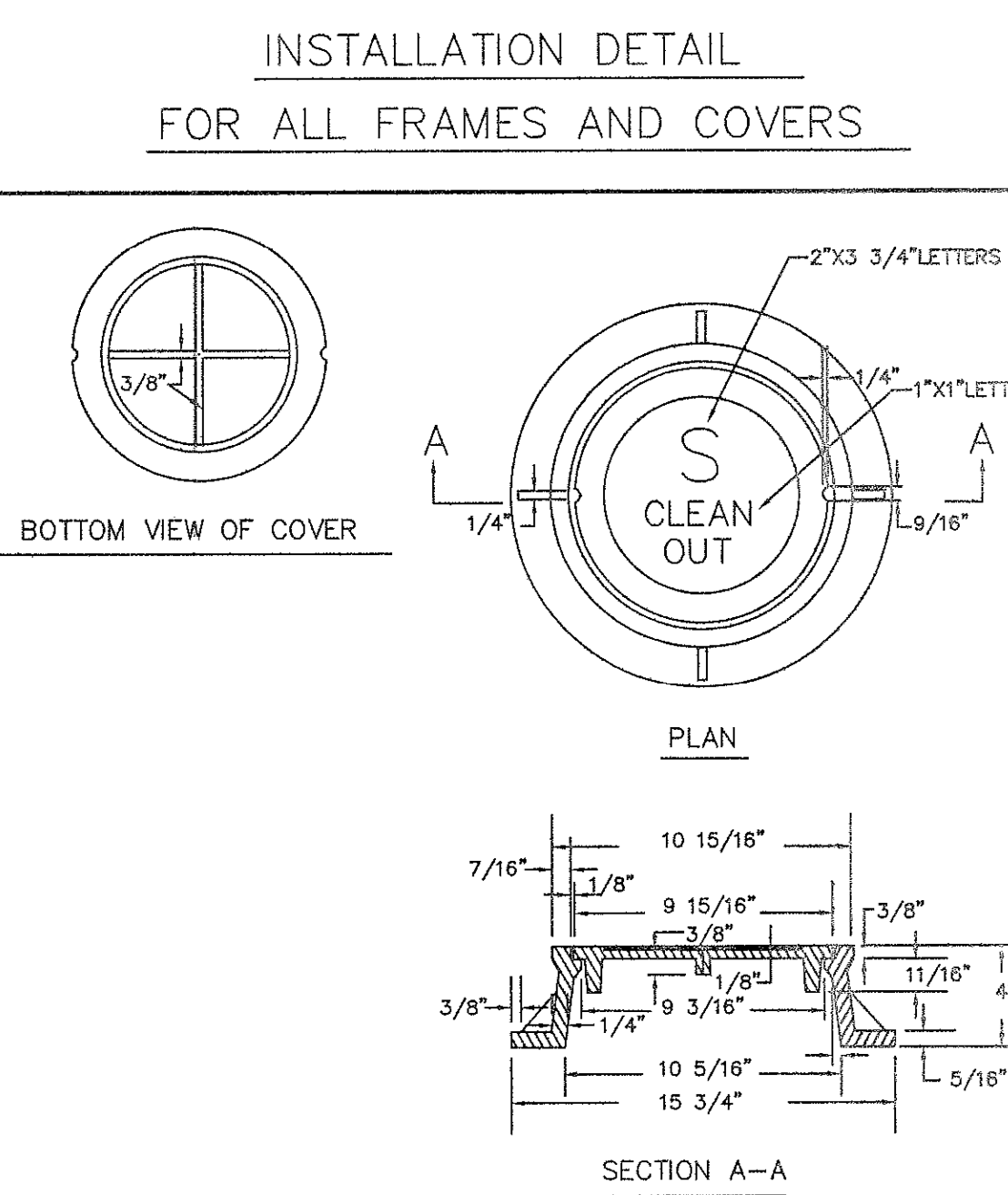
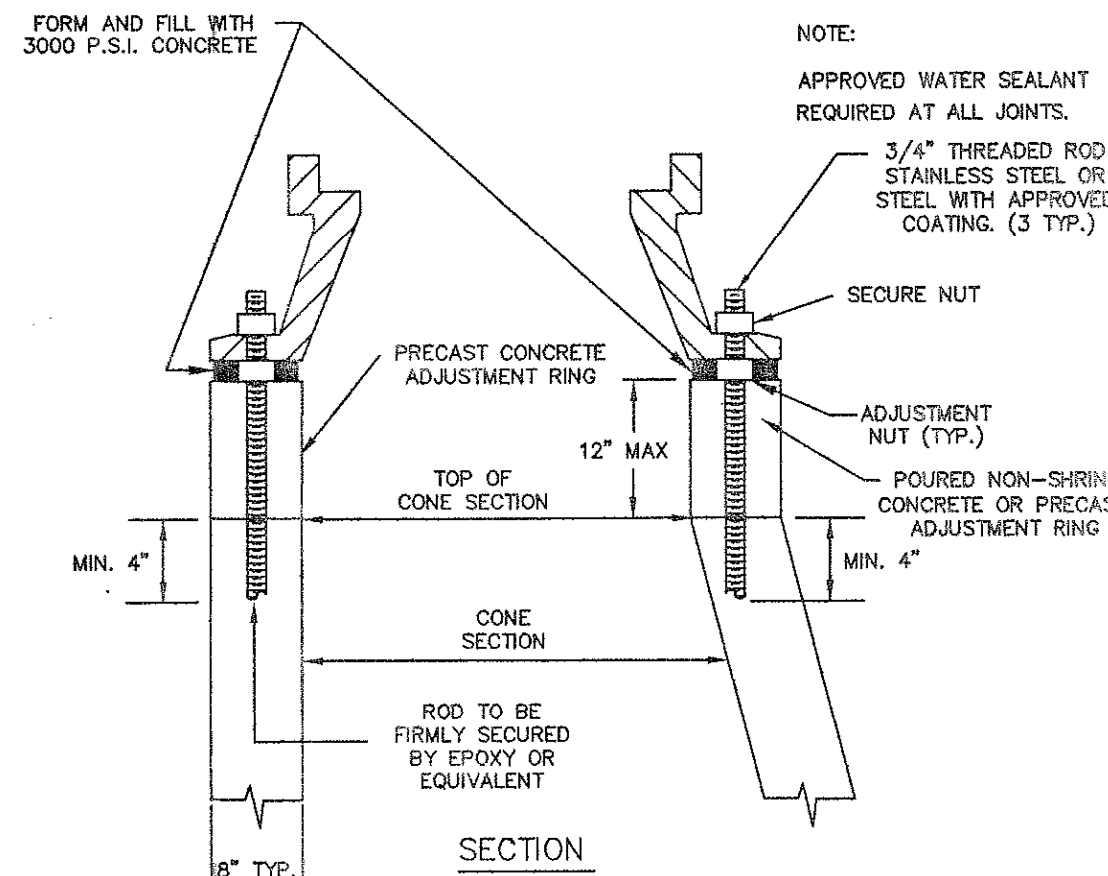
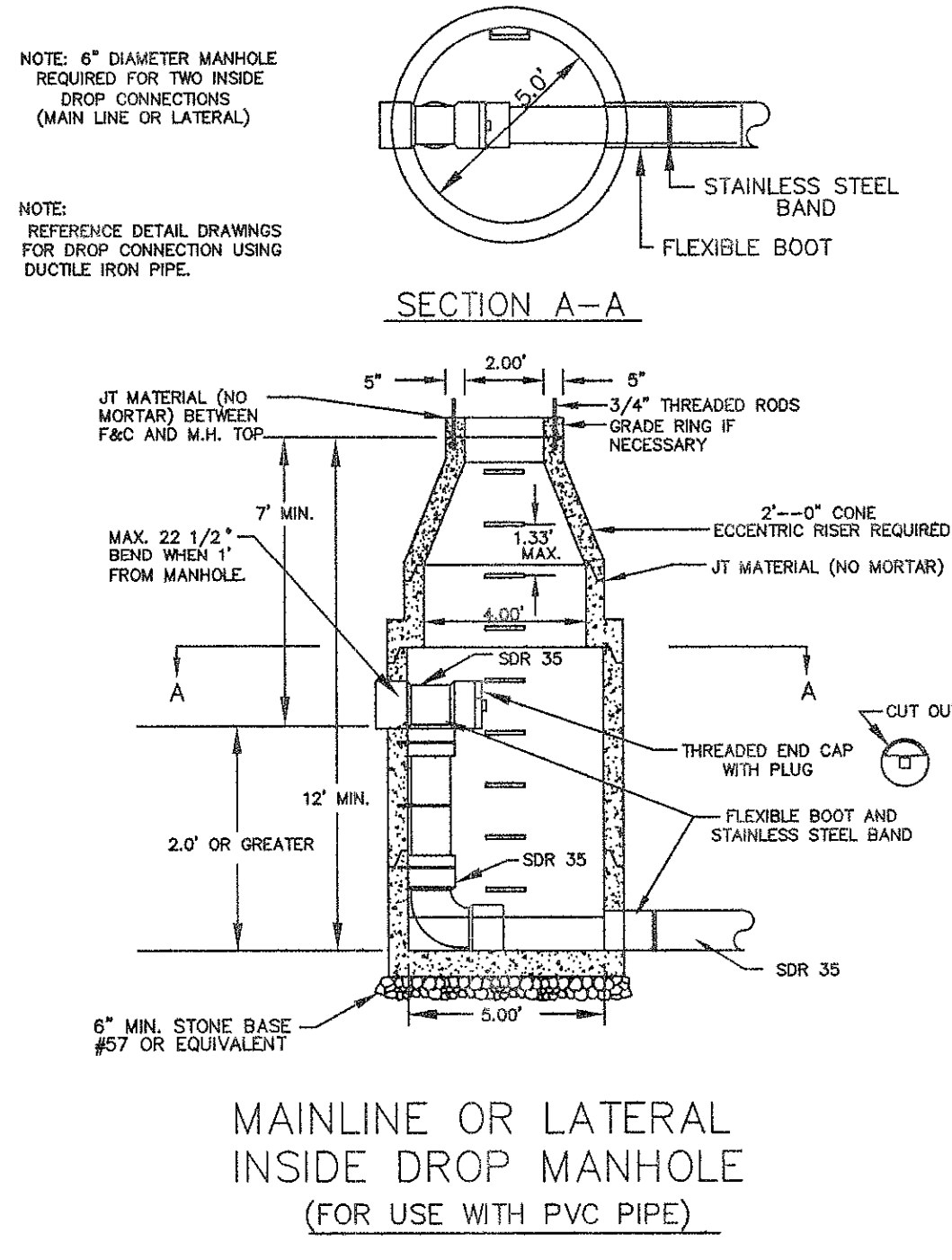
1. ALL MANHOLE FRAMES AND COVERS SHALL BE DEWEY BROTHERS, INC. MH-RCR-3000W IN NON-PAVED AREAS, MH-RCR-3000EC IN PAVED AREAS, MH-RCR-3000 IN AREAS NOT SUBJECT TO FLOODING OR APPROVED EQUAL.
2. THE FIRST STEP IN THE ECCENTRIC MANHOLE SHALL BE 1 FOOT FROM THE TOP OF THE CONE SECTION AND A MAXIMUM OF 4.5 INCHES WIDE FROM THE INSIDE FACE OF THE CONE SECTION.
3. THE ENTIRE MANHOLE STRUCTURE INCLUDING FRAME AND COVER SHALL BE INSTALLED BEFORE CUTTING THE TOP OF THE SEWER PIPE IN THE MANHOLE. ROANOKE COUNTY PERSONNEL TO CUT EXISTING PIPE.
4. THE FRAME AND COVER SHALL BE PROPERLY ALIGNED WITH THE 2 FOOT OPENING OF THE MANHOLE STRUCTURE AND BOLTED IN PLACE.
5. FLAT TOP TO BE VDOT APPROVED FOR TRAFFIC BEARING.



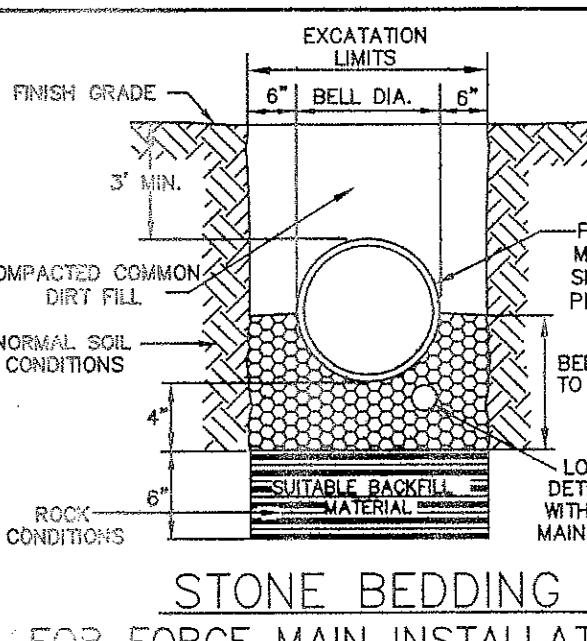
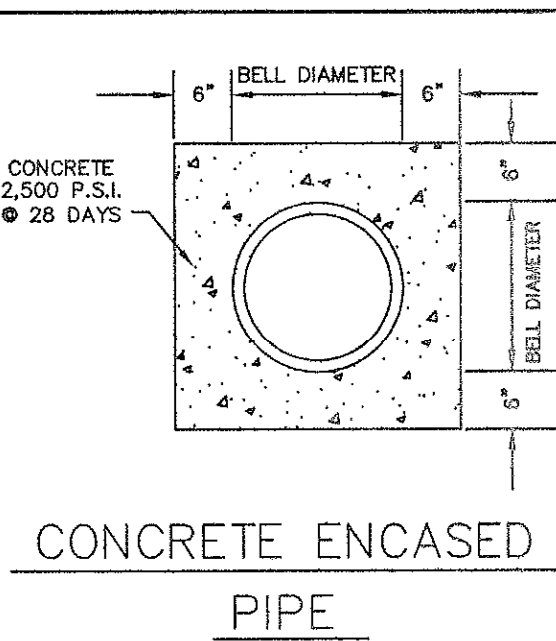
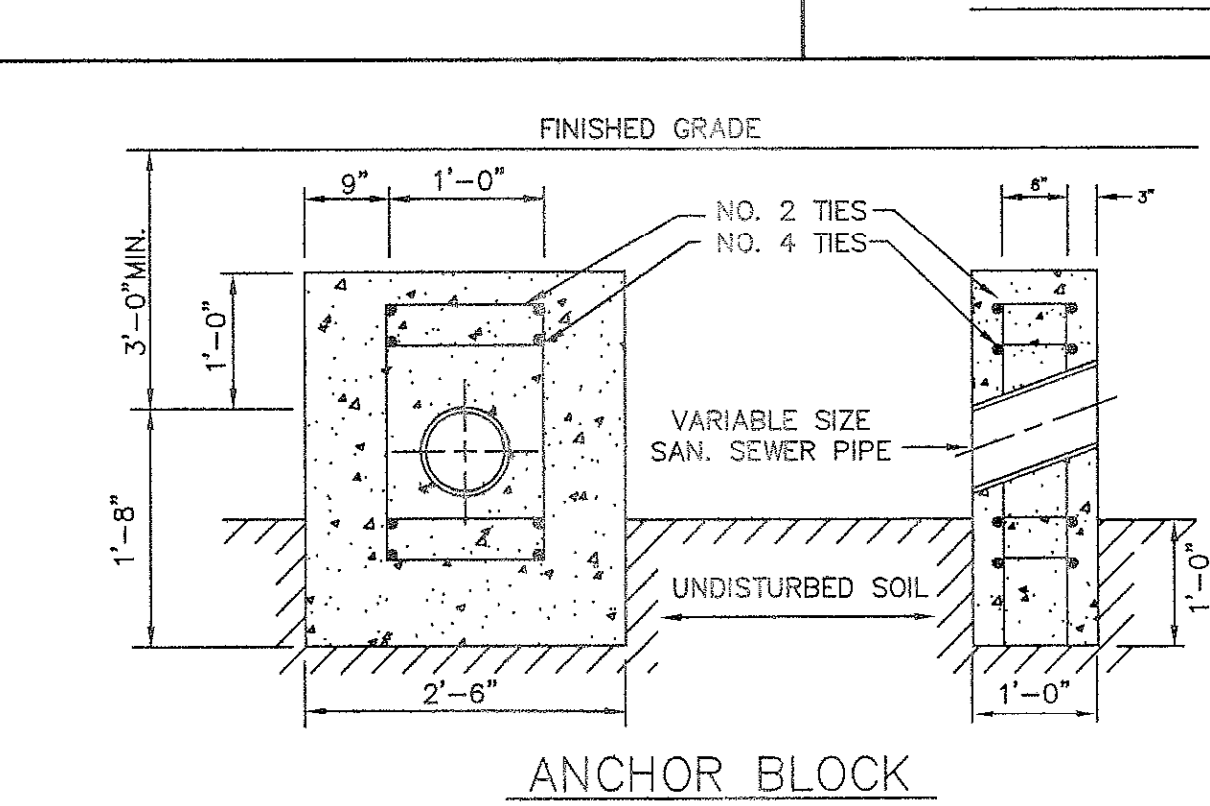
WATERTIGHT MANHOLE FRAME AND COVER



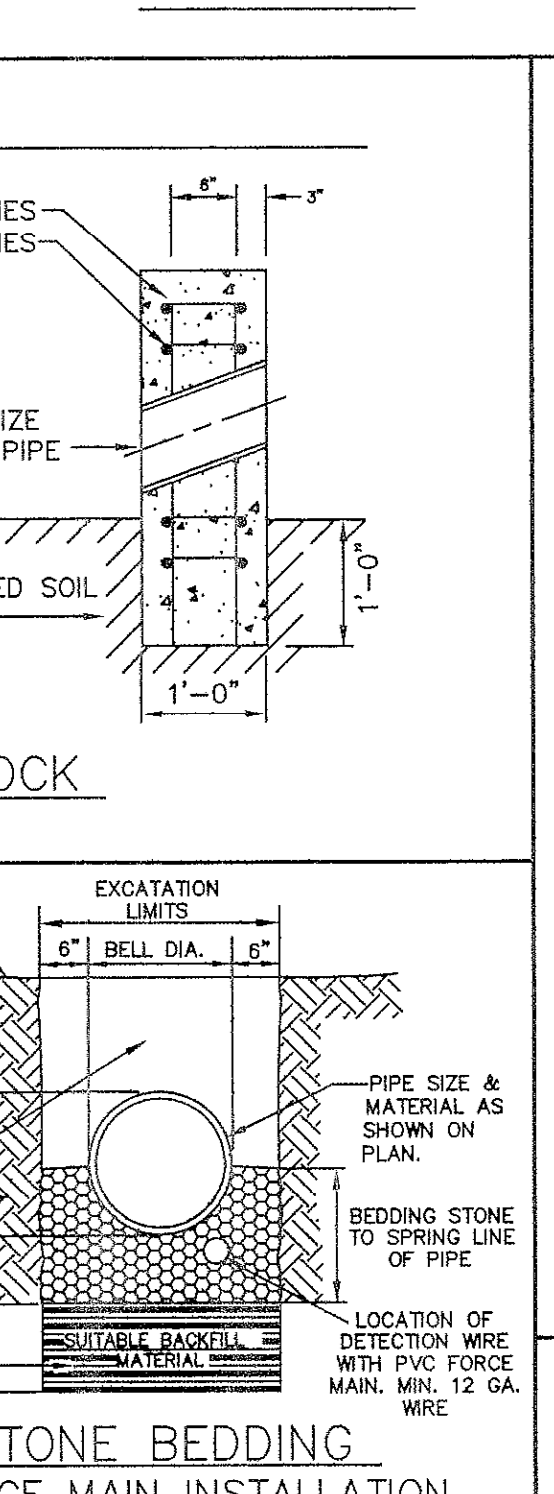
NOTE: DEWEY BROTHERS, INC. MH-RCR-3000ECW WATERTIGHT FRAME & COVER (PAVED)



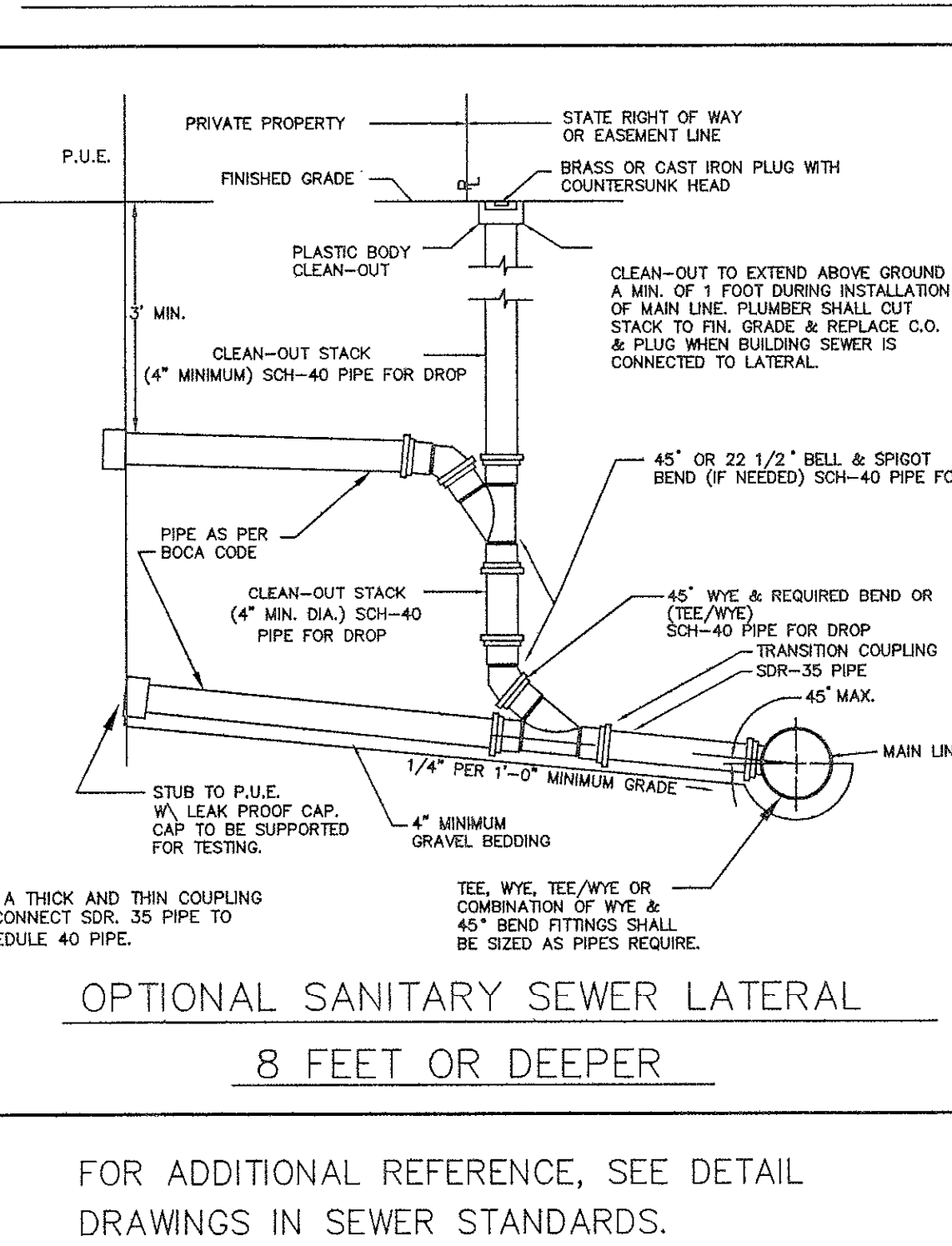
ANCHOR BLOCK



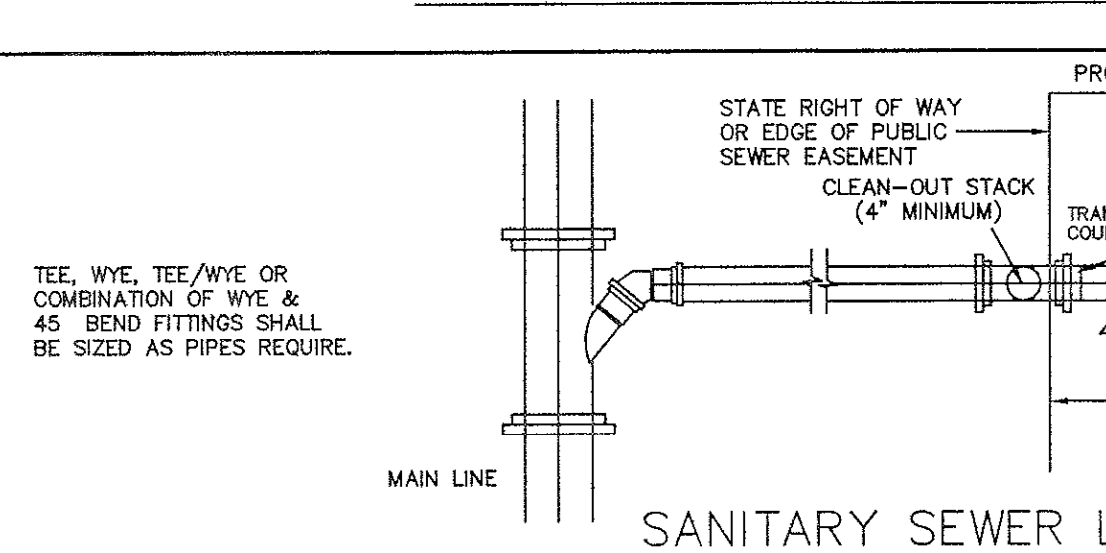
OPTIONAL LATERALS



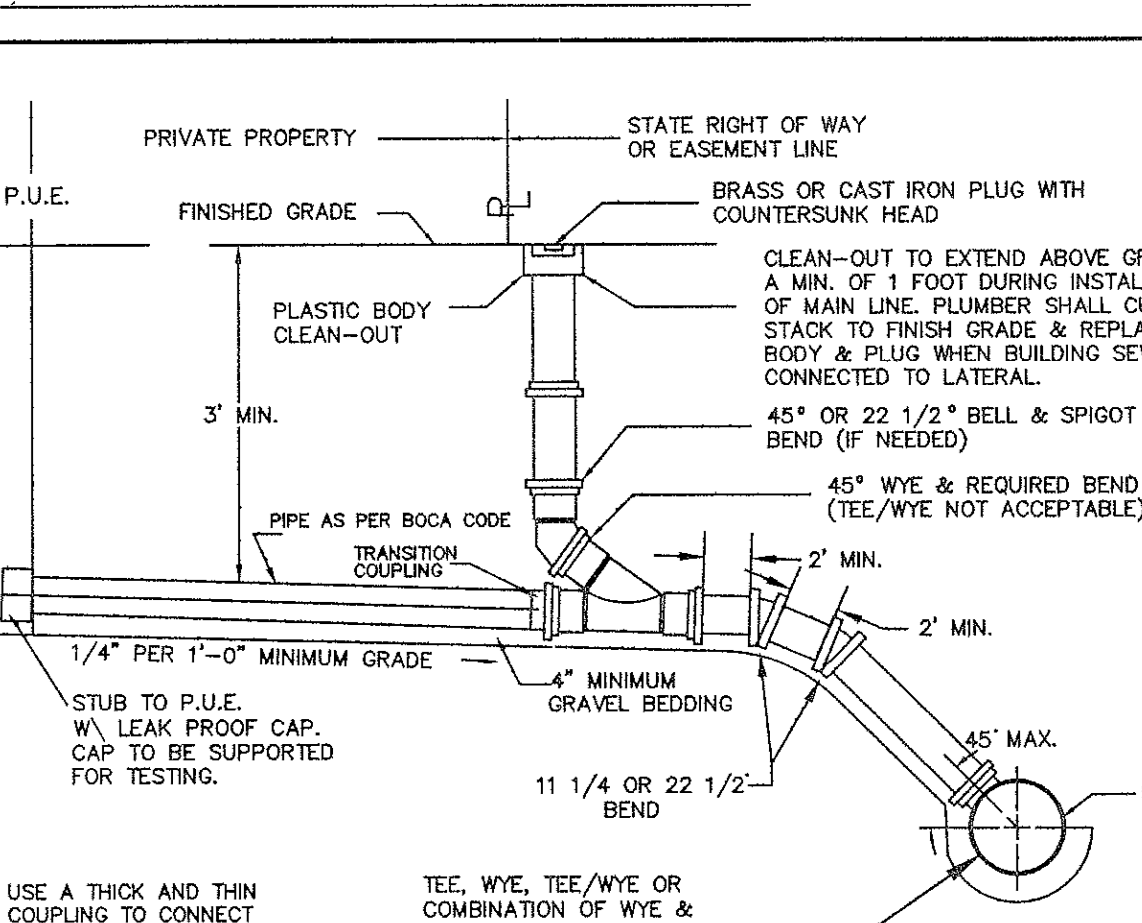
SANITARY SEWER LATERAL IN P.U.E.



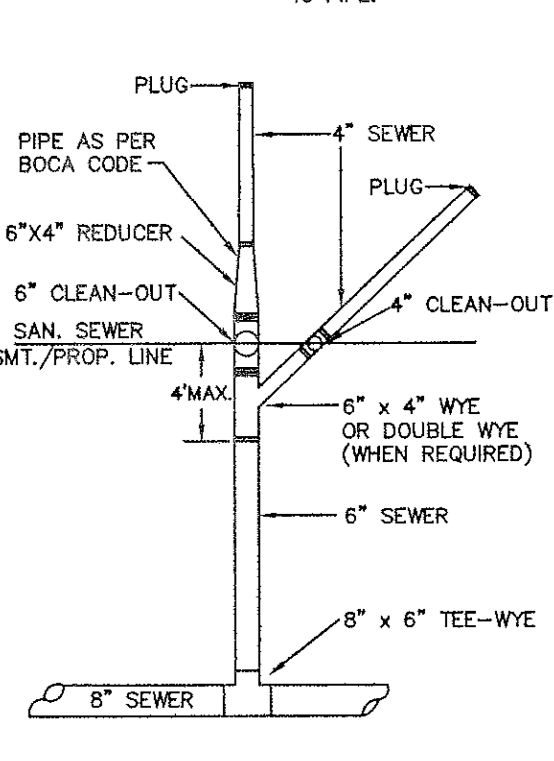
SANITARY SEWER LATERAL



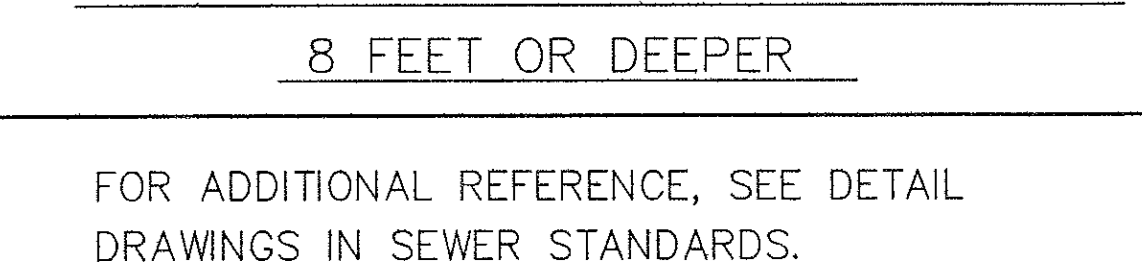
SANITARY SEWER LATERAL



OPTIONAL LATERALS



OPTIONAL SANITARY SEWER LATERAL



COUNTY OF ROANOKE  
DEPARTMENT  
OF  
ENGINEERING AND INSPECTIONS

1	05/23/95
2	06/30/95
3	
4	
5	
6	
7	
NO.	REVISIONS
	DATE

DATE: 04/26/94  
SCALE: NO SCALE  
DRAWING BY: CN,TB,AF (G:\CAD\DETAILS\SEWER\SEWER)  
DESIGNED BY: ROANOKE COUNTY ENGINEERING DEPT.  
APPROVED BY:

SEWER DETAILS

KROGER STORE R-375  
SITE PLAN  
ROANOKE COUNTY, VIRGINIA

LMW P.C.  
ENGINEERING • ARCHITECTURE • SURVEYING  
1540 345-0675  
102 ALBEMARLE AVE., S.E.  
ROANOKE, VIRGINIA 24013

SHEET  
10 of 11