

W.V.W.A. SERVICE LATERAL INFORMATION

LOT	DOWNSIDE MANHOLE	DIST.	TOP OF S.S. MAIN	MIN. SEWERABLE E.F. ELEVATION	APPROX. WATER PRESSURE
1	B	25'	1184.7	1187.7	94 psi
2	B	22'	1187.9	1187.9	94 psi
3	B	25'	1186.7	1189.7	93 psi
4	B	23'	1186.9	1189.9	92 psi
5	B	25'	1188.7	1191.7	92 psi
6	B	23'	1188.9	1191.9	92 psi
7	B	25'	1190.7	1193.7	91 psi
8	B	23'	1190.9	1193.9	91 psi
9	B	25'	1192.7	1195.7	90 psi
10	B	23'	1192.9	1195.9	90 psi
11	B	9'	1185.9	1188.9	93 psi
12	B	13'	1188.1	1191.1	92 psi
13	B	11'	1188.3	1191.3	92 psi
14	B	13'	1190.1	1193.1	91 psi
15	B	11'	1190.3	1193.3	91 psi
16	B	13'	1192.1	1195.1	90 psi
17	B	11'	1192.3	1195.3	90 psi
18	B	13'	1194.1	1197.1	89 psi
19	B	11'	1194.3	1197.3	89 psi
20	A	11'	1195.7	1198.7	88 psi
21	C	17'	1175.8	1178.8	97 psi
22	C	75'	1176.7	1179.7	96 psi
ex. house	A	43'	1197.7	1200.7	87 psi

NOTES:
1. THE MIN. FLOOR ELEVATION IS BASED ON SEC. 24(C) OF THE WESTERN VIRGINIA REGIONAL DESIGN AND CONSTRUCTION STANDARDS. LOT OWNERS REQUESTING A LOWER SERVICE ELEVATION WILL REQUIRE THE USE OF A PRIVATE SEWAGE PUMP FACILITY, INSTALLED AND MAINTAINED BY THE HOMEOWNER.

GENERAL WWVA NOTES:

1. ALL CONSTRUCTION METHODS AND MATERIALS SHALL CONFORM TO THE LATEST WWVA DESIGN AND CONSTRUCTION STANDARDS.
2. THE CONTRACTOR OR DEVELOPER IS REQUIRED TO NOTIFY THE WWVA IN WRITING AT LEAST THREE (3) DAYS PRIOR TO ANY CONSTRUCTION. PLEASE CONTACT MARK SINK AT (540) 537-3460.
3. ALL WORK SHALL BE SUBJECT TO INSPECTION BY THE WWVA.
4. FIELD CORRECTIONS SHALL BE APPROVED BY THE WWVA PRIOR TO SUCH CONSTRUCTION.
5. THE CONTRACTOR SHALL MAINTAIN A MINIMUM OF 18" CLEARANCE VERTICALLY AND 2' MINIMUM HORIZONTALLY FROM OUTSIDE OF PIPE TO OUTSIDE OF PIPE AT ALL WATER AND SANITARY SEWER CROSSINGS OF ANY OTHER UTILITIES, WHERE THIS CANNOT BE ACHIEVED ADDITIONAL MEASURES IN ACCORDANCE WITH WWVA STANDARDS SHALL BE ENFORCED.
6. ANY EXISTING APPURTENANCES SHOULD BE ADJUSTED TO GRADE AND NEW FRAME AND COVERS INSTALLED WHERE REQUIRED.
7. IT IS THE CONTRACTOR'S RESPONSIBILITY TO HAVE ALL EXISTING UTILITIES LOCATED AND POTHOLED TO VERIFY LOCATIONS. THIS PLAN REVIEW DOES NOT REMOVE THE CONTRACTOR'S RESPONSIBILITY TO RELOCATE ANY EXISTING CONFLICTS FOUND DURING CONSTRUCTION.

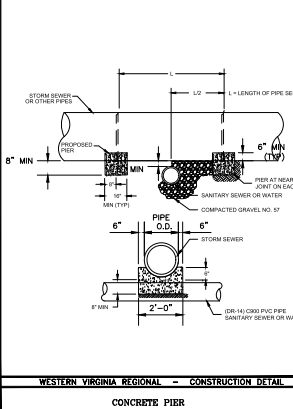
SEWER NOTES:

1. ALL SANITARY SEWER CONNECTIONS TO EXISTING LINES SHALL BE COORDINATED WITH AND PERFORMED BY THE WWVA.
2. ALL WATER AND SANITARY SEWER FACILITIES ARE TO BE INSTALLED ACCORDING TO THE WWVA DESIGN AND CONSTRUCTION STANDARDS.

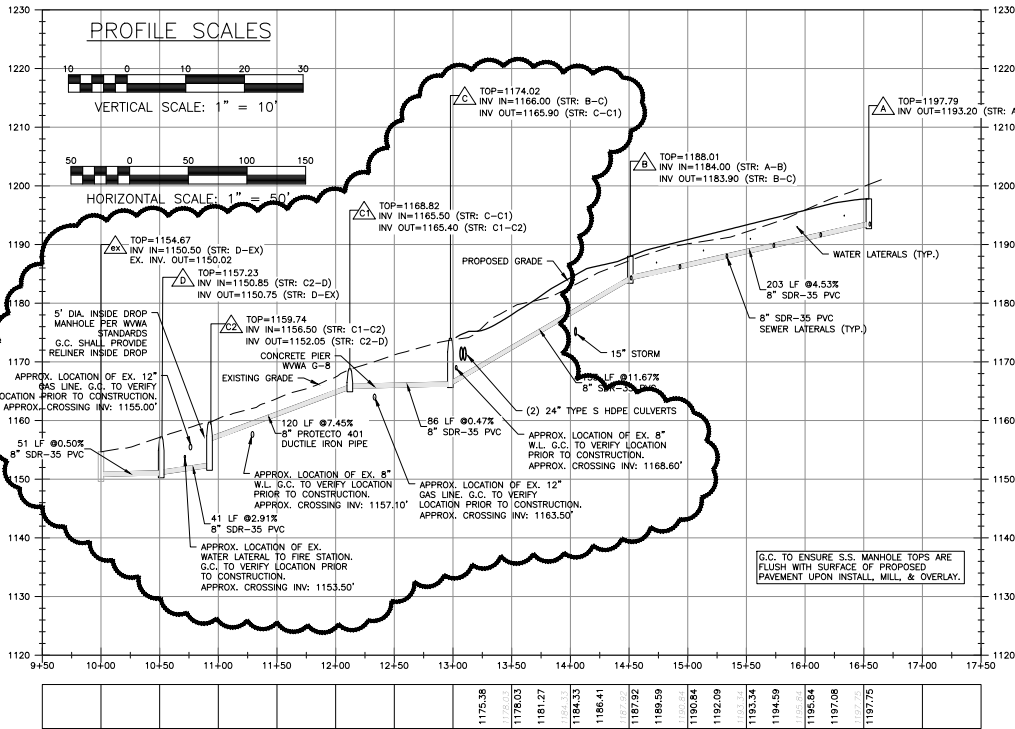
WATER NOTES:

1. ALL WATER CONNECTIONS TO EXISTING LINES SHALL BE COORDINATED WITH AND PERFORMED BY THE WWVA.
2. ALL WATER AND SANITARY SEWER FACILITIES ARE TO BE INSTALLED ACCORDING TO THE WWVA DESIGN AND CONSTRUCTION STANDARDS.
3. WWVA AVAILABILITY LETTER NUMBER: 12-306 & 18-164

1. PIER REQUIRED WHEN STORM DRAIN OR OTHER PIPES CROSS OVER THE OTHER UTILITY WITH A VERTICAL CLEARANCE OF LESS THAN 18".
2. PIER TO BE BUILT ON UNDISTURBED EARTH.
3. CONCRETE TO BE READY MIX, CLASS A.



SANITARY SEWER PROFILE



SANITARY SEWER SCHEDULE:

- | | | |
|-----|--|---|
| (A) | S.S. MANHOLE - PUBLIC (W/ STANDARD LID) | TOP: 1197.79
INV. = 1093.20 |
| (A) | (B) 203 LF OF 8" PVC SDR-35 AT 4.53% | |
| (B) | S.S. MANHOLE - PUBLIC (W/ STANDARD LID) | TOP: 1188.01
INV. IN= 1184.00
INV. OUT= 1183.90 |
| (B) | (C) 153 LF OF 8" PVC SDR-35 AT 2.91% | |
| (C) | S.S. MANHOLE - PUBLIC (W/ TRAFFIC-BEARING LID) | TOP: 1174.02
INV. IN= 1166.00
INV. OUT= 1165.90 |
| (C) | (E) 86 LF OF 8" PVC (W/ TRAFFIC-BEARING LID) | TOP: 1168.82
INV. IN= 1168.50
INV. OUT= 1160.40 |
| (C) | (E) 120 LF OF 8" PROTECTO 401 DUCTILE IRON PIPE AT 7.45% | |
| (C) | (D) S.S. MANHOLE - PUBLIC (W/ TRAFFIC-BEARING LID) | TOP: 1160.29
INV. IN= 1156.50
INV. OUT= 1152.05 |
| (C) | (D) 41 LF OF 8" PVC SDR-35 AT 2.91% | |
| (D) | S.S. MANHOLE - PUBLIC (W/ TRAFFIC-BEARING LID) | TOP: 1157.23
INV. IN= 1150.85
INV. OUT= 1150.75 |
| (D) | (E) 51 LF OF 8" PVC SDR-35 AT 0.00% | INV. OUT: 1150.50 |
- (G.C. TO CONFIRM & COORDINATE ALL TIE IN LOCATIONS W/ M.E.P. & ARCH. DRAWINGS PRIOR TO ANY INTERIOR OR EXTERIOR S.S. PIPE BEING INSTALLED. NOTIFY ENGINEER IMMEDIATELY IF DISCREPANCIES ARE DISCOVERED PRIOR TO ANY CONSTRUCTION.)

OFF-SITE S.S. EXTENSION

SCALE: 1"=20'



www.balzer.cc

Roanoke
New River Valley
Richmond
Staunton
Harrisonburg

RESIDENTIAL LAND DEVELOPMENT ENGINEERING
SITE DEVELOPMENT ENGINEERING
LAND USE PLANNING & ZONING
LANDSCAPE ARCHITECTURE
LAND SURVEYING
STRUCTURAL ENGINEERING
TRANSPORTATION ENGINEERING
ENVIRONMENTAL & SOIL SCIENCE
WETLAND DELINEATION & STREAM EVALUATION

Balzer and Associates, Inc.
1208 Corporate Circle
Roanoke, VA 24018
540-772-8580
FAX 540-772-8050



LAUREL CREST TOWNHOMES
5356 & 5372 INDIAN GRAVE ROAD
PROFILES II
CAVE SPRING DISTRICT
ROANOKE COUNTY, VIRGINIA

DRAWN BY CPB
DESIGNED BY CPB
CHECKED BY BTC
DATE 9/5/2018
SCALE AS NOTED

REVISIONS:
10/16/2018
10/31/2018
2/7/2019
2/26/2019
8/16/2019 P.R. #1

SHEET NO.
C10
JOB NO. 04170065.00

APPROVED, 6/26/2020