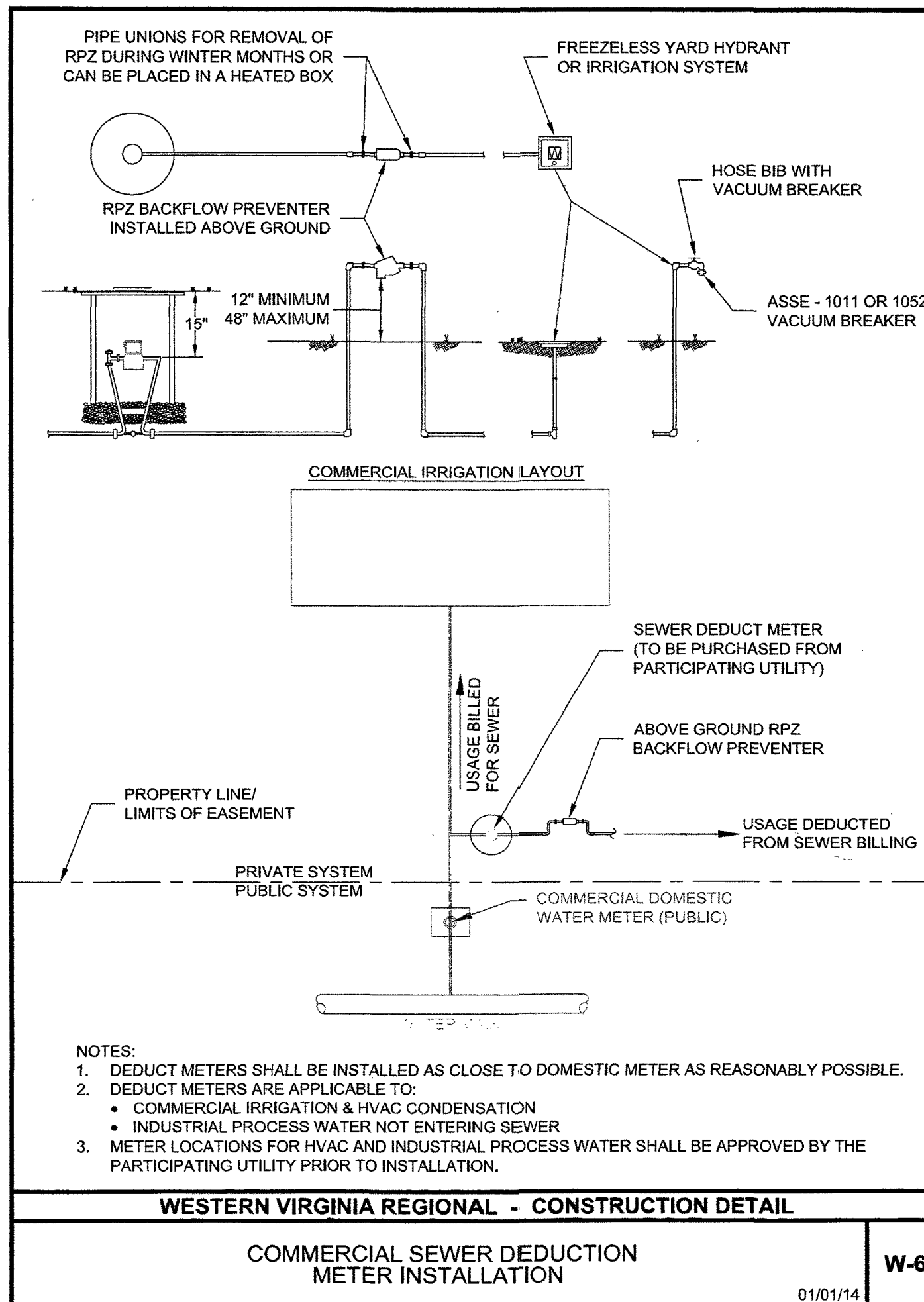
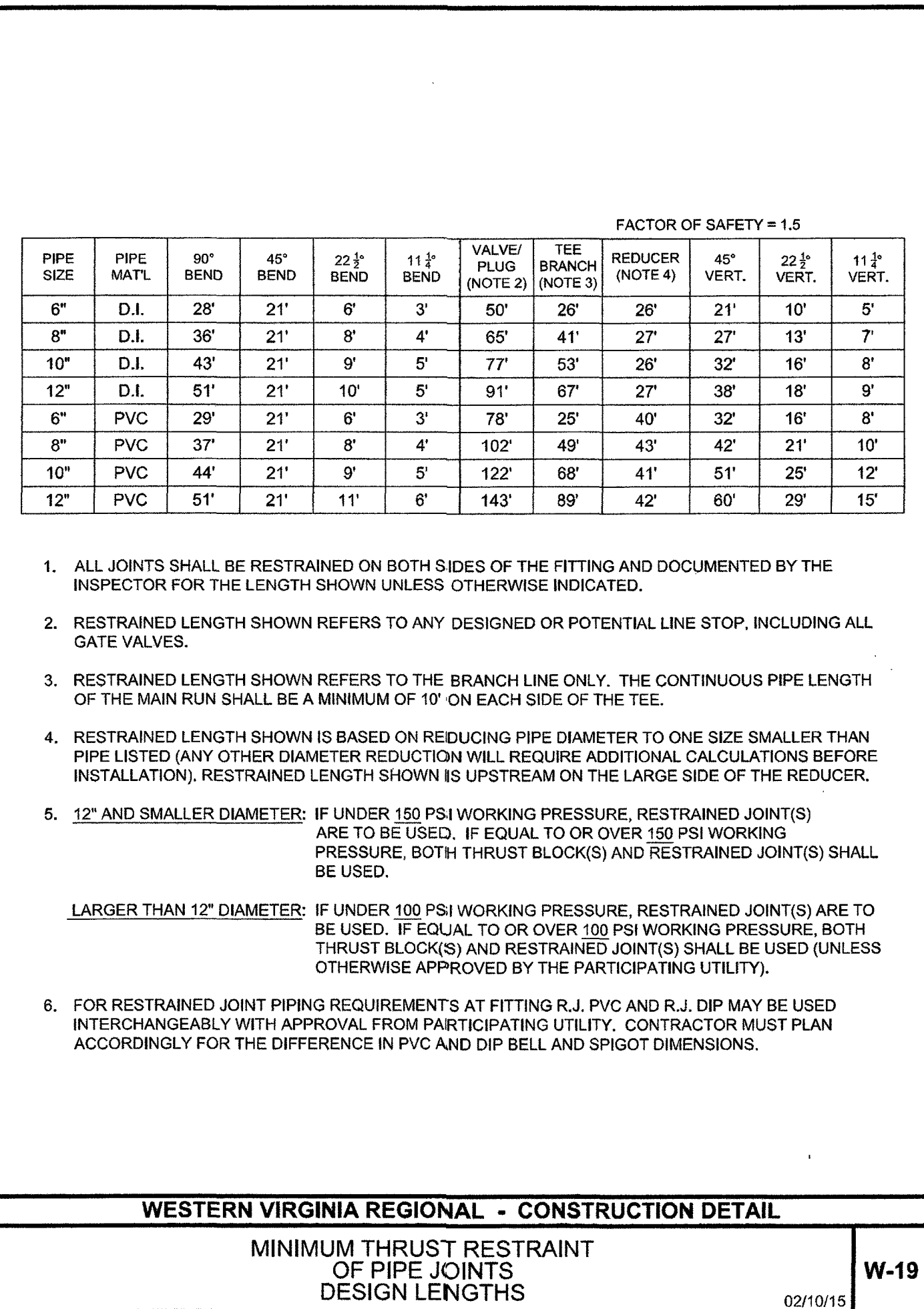
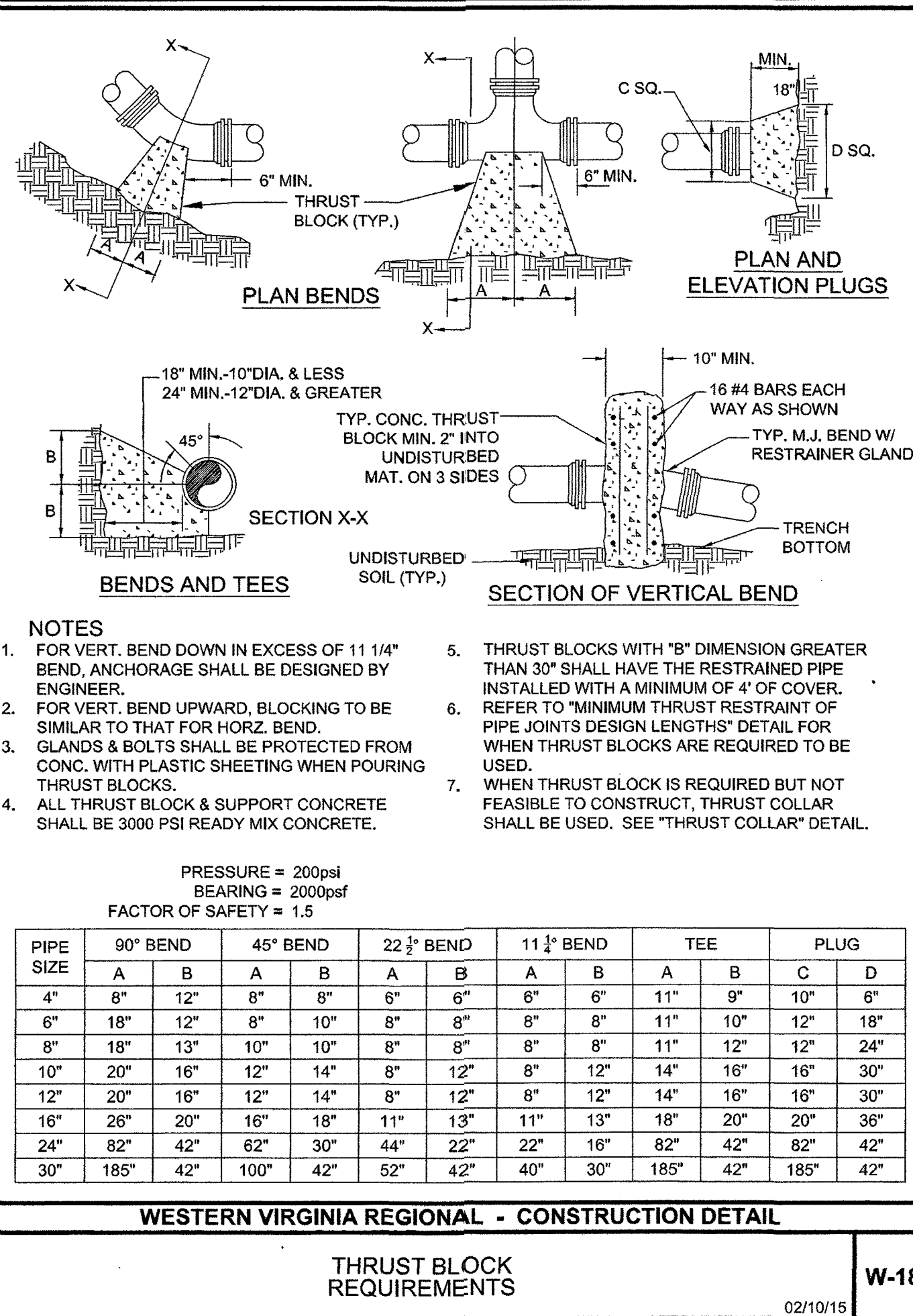
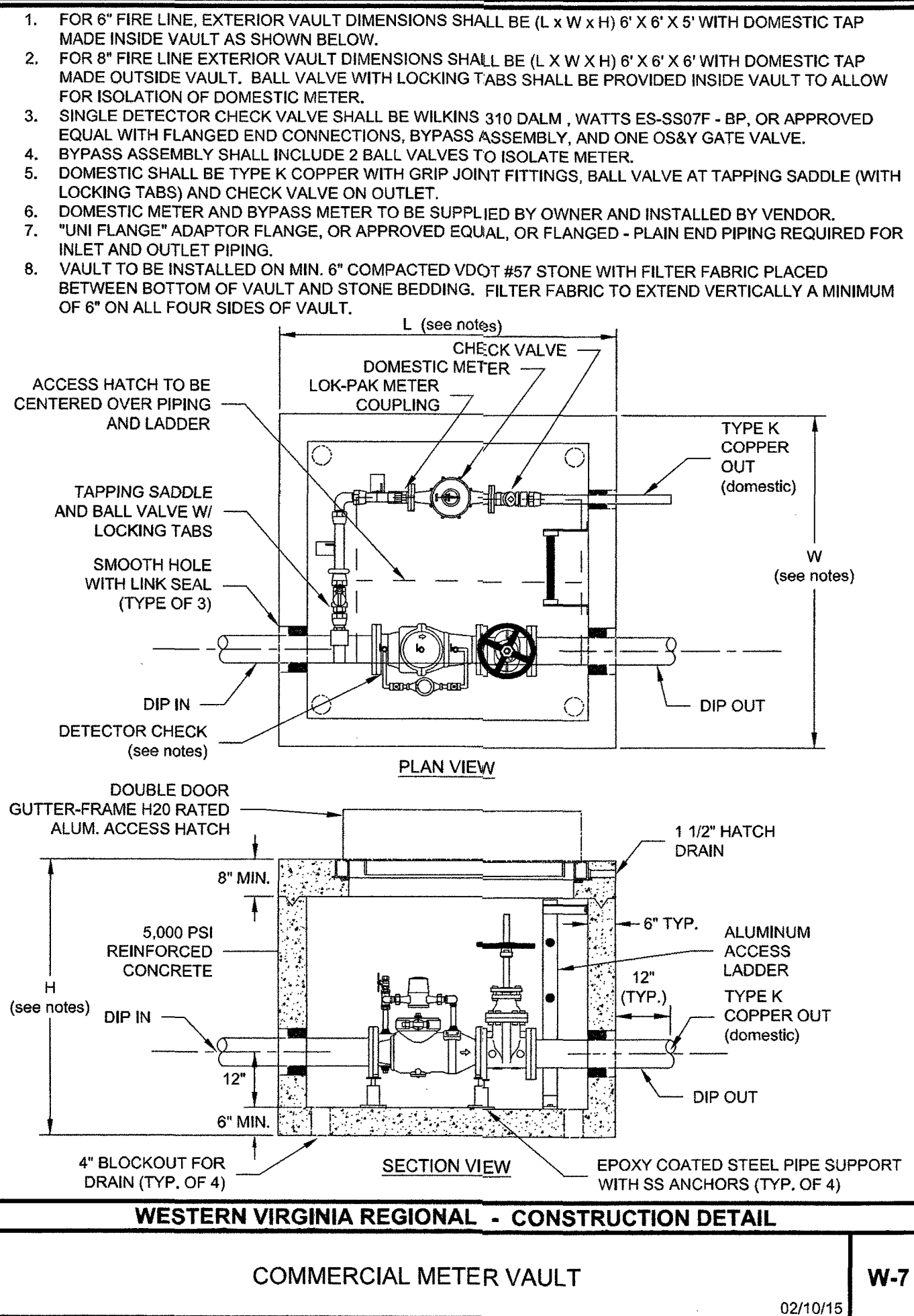
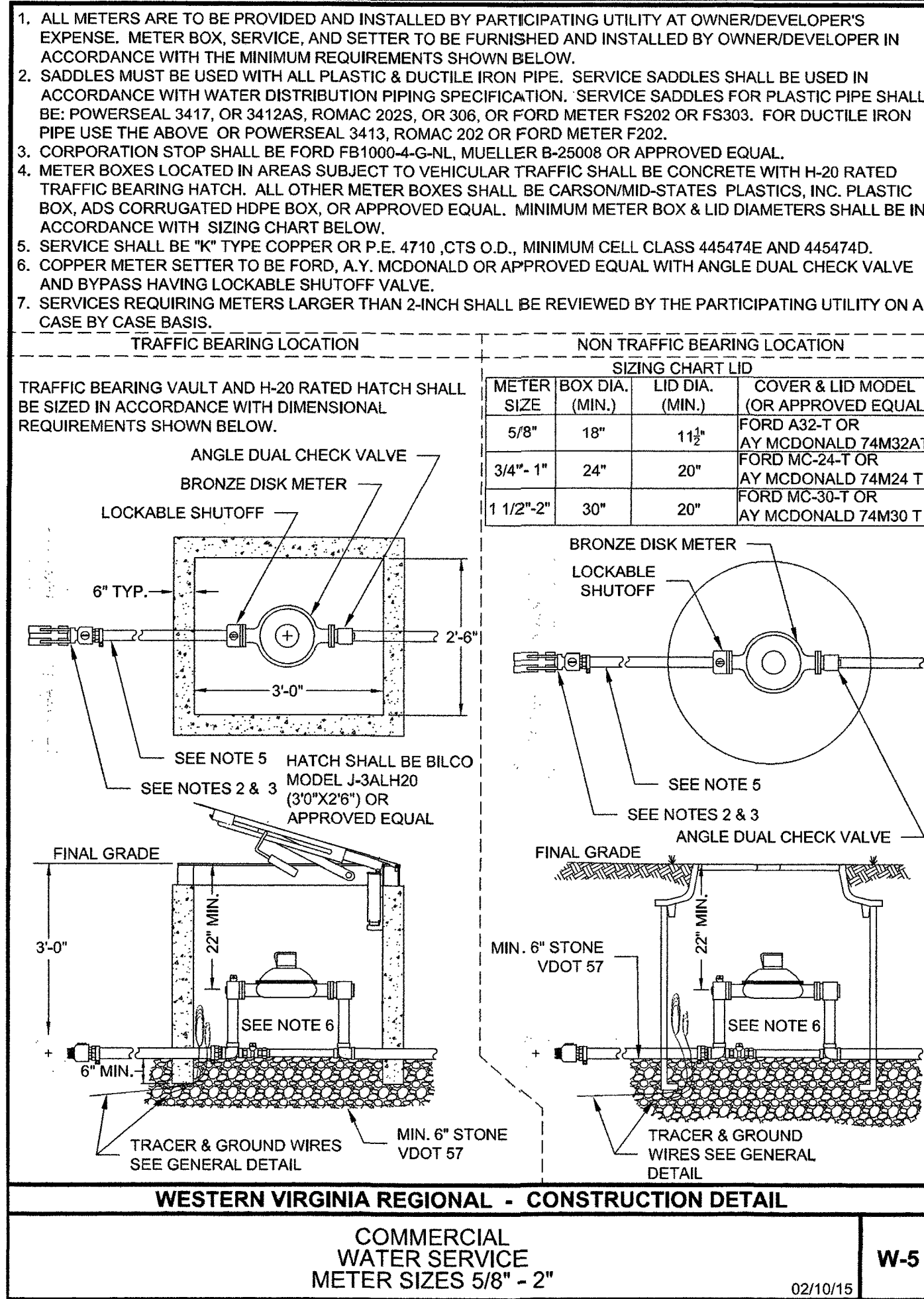


R:\10638321-Lewis_Emergency\DWG\Sheet\CD38321-C01-COVER.dwg | Plotted on 12/20/17 3:40 PM | by Nate Martin



Fire Flow Estimate Form
International Fire Code Method of Calculating NFPA (Needed Fire Flow)

Engineer: TIMMONS GROUP Date: 8/19/18

Project Name and Address: LEWIS GALE EMERGENCY ROOM Calc By: NPM

Type of Construction - Based on 2000 Edition of the International Building Code
TYPE IIB

Number of Stories: 1

Total Ground Floor Area - Including Projections (Canopies, Loading Docks, Etc): 11,133 SF

Total Area of Other Floors - Including Basements: 11,133 SF

Total Building Area in Square Feet: 11,133 SF

FIRE AREA CONSIDERED:

Note: In order to apply the reduction in area for a building, a fire resistive rated FIRE WALL without openings shall be provided. WITHOUT OPENINGS refers to no penetrations being permitted (i.e., doors, duct penetrations, pipe penetrations, (B104.1))

Fire Resistive Rating of FIRE WALL: N/A (Hours)

Area in Square Feet Between FIRE WALL or Either Side: N/A

Required Fire Flow from International Fire Code - Table B105.1: 2,250 GPM

Fire Flow Duration in Hours from International Fire Code - Table B105.1: 2 HOURS

NEEDED FIRE FLOW: (Based on Total Adjusted Square Foot Area)

Automatic Sprinklers (YES ☒ NO ☐ Reduction Factor (75% max) 75 % x (NFF) 2,250 = 563 GPM

NOTE: MINIMUM REQUIRED FIRE FLOW NOT LESS THAN 1500 GPM AT MINIMUM 20 PSI RESIDUAL PRESSURE TOTAL GPM: 1,500

FIRE HYDRANTS AND SPACING:

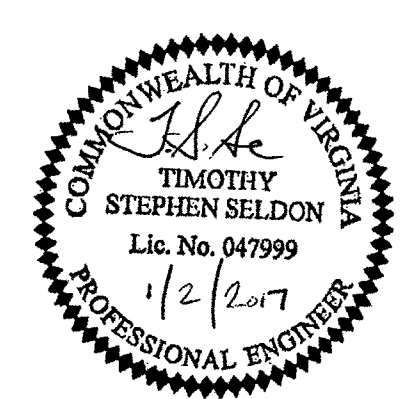
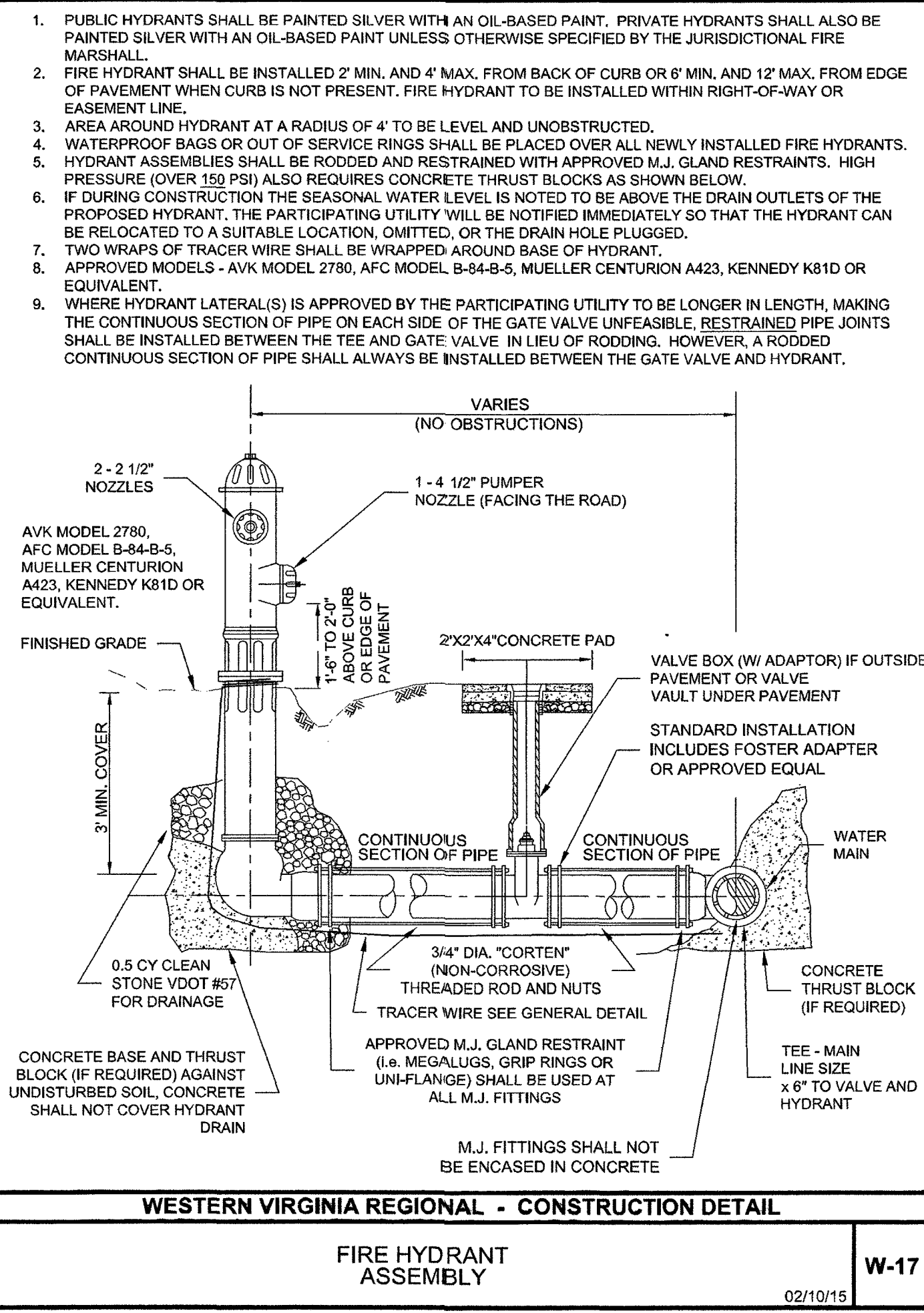
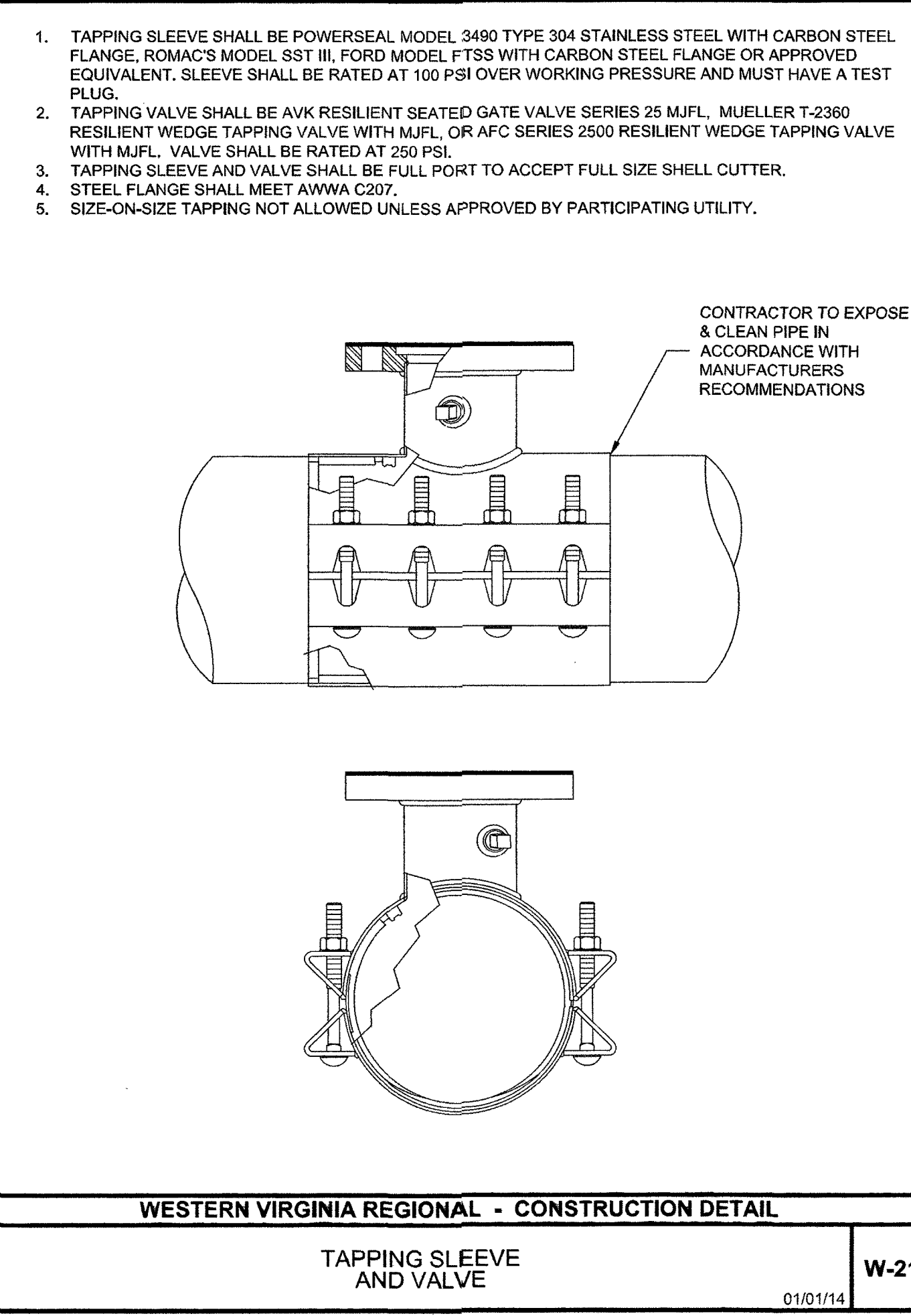
REQUIRED MINIMUM NUMBER OF FIRE HYDRANTS (IFC Table C105.1): 1

AVERAGE SPACING BETWEEN FIRE HYDRANTS (IFC Table C105.1): 500 FT

I CERTIFY THAT THE ABOVE INFORMATION IS TRUE AND CORRECT.

SIGNATURE: Benjamin P.E. (SIGNATURE REQUIRED)

Reference: 2000 Edition International Fire Code, Appendix B, C, and D



THIS DRAWING PREPARED AT THE
TIMMONS GROUP
4701 Owens Way, Suite 900 | Prince George, VA 23875
TEL 804.458.8685 FAX 804.458.1511 www.timmons.com

YOUR VISION ACHIEVED THROUGH OURS.

REVISION DESCRIPTION
DATE
REVISED PER COUNTY AND VDOT COMMENTS
REVISED PER COUNTY AND VDOT COMMENTS
SIGNATURE SETS

DATE
8-23-2016
DRAWN BY
T. SELDON
DESIGNED BY
T. SELDON
CHECKED BY
T. SELDON
SCALE
NONE

LEWISGALE EMERGENCY CENTER
CAVE SPRING DISTRICT - ROANOKE COUNTY - VIRGINIA
UTILITY NOTES AND DETAILS

JOB NO.
38321
SHEET NO.
C1.3

APPROVED