

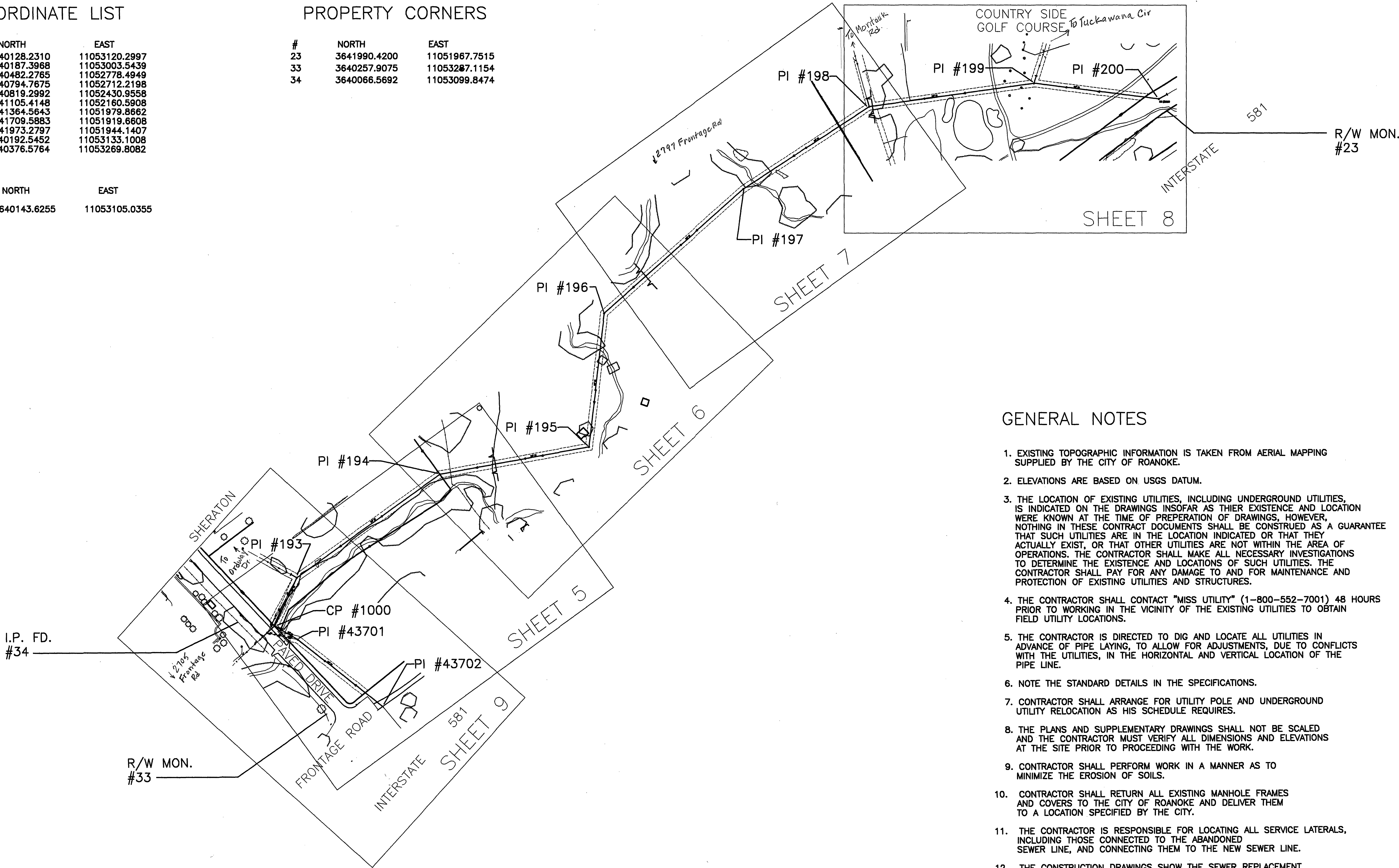
COORDINATE LIST

PI#	NORTH	EAST
192	3640128.2310	11053120.2997
193	3640187.3968	11053003.5439
194	3640482.2765	11052778.4949
195	3640794.7675	11052712.2198
196	3640819.2992	11052430.9558
197	3641105.4148	11052160.5908
198	3641364.5643	11051979.8662
199	3641709.5883	11051919.6608
200	3641973.2797	11051944.1407
43701	3640192.5452	11053133.1008
43702	3640376.5764	11053269.8082

CP#	NORTH	EAST
1000	3640143.6255	11053105.0355

PROPERTY CORNERS

#	NORTH	EAST
23	3641990.4200	11051967.7515
33	3640257.9075	11053287.1154
34	3640066.5692	11053099.8474



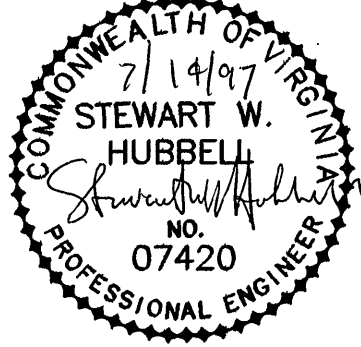
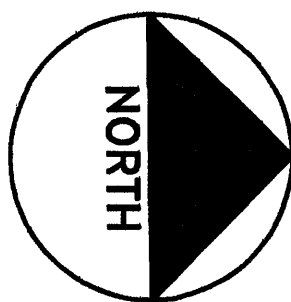
GENERAL NOTES

- EXISTING TOPOGRAPHIC INFORMATION IS TAKEN FROM AERIAL MAPPING SUPPLIED BY THE CITY OF ROANOKE.
- ELEVATIONS ARE BASED ON USGS DATUM.
- THE LOCATION OF EXISTING UTILITIES, INCLUDING UNDERGROUND UTILITIES, IS INDICATED ON THE DRAWINGS INSOFAR AS THEIR EXISTENCE AND LOCATION WERE KNOWN AT THE TIME OF PREPERATION OF DRAWINGS, HOWEVER, NOTHING IN THESE CONTRACT DOCUMENTS SHALL BE CONSTRUED AS A GUARANTEE THAT SUCH UTILITIES ARE IN THE LOCATION INDICATED OR THAT THEY ACTUALLY EXIST, OR THAT OTHER UTILITIES ARE NOT WITHIN THE AREA OF OPERATIONS. THE CONTRACTOR SHALL MAKE ALL NECESSARY INVESTIGATIONS TO DETERMINE THE EXISTENCE AND LOCATIONS OF SUCH UTILITIES. THE CONTRACTOR SHALL PAY FOR ANY DAMAGE TO AND FOR MAINTENANCE AND PROTECTION OF EXISTING UTILITIES AND STRUCTURES.
- THE CONTRACTOR SHALL CONTACT "MISS UTILITY" (1-800-552-7001) 48 HOURS PRIOR TO WORKING IN THE VICINITY OF THE EXISTING UTILITIES TO OBTAIN FIELD UTILITY LOCATIONS.
- THE CONTRACTOR IS DIRECTED TO DIG AND LOCATE ALL UTILITIES IN ADVANCE OF PIPE LAYING, TO ALLOW FOR ADJUSTMENTS, DUE TO CONFLICTS WITH THE UTILITIES, IN THE HORIZONTAL AND VERTICAL LOCATION OF THE PIPE LINE.
- NOTE THE STANDARD DETAILS IN THE SPECIFICATIONS.
- CONTRACTOR SHALL ARRANGE FOR UTILITY POLE AND UNDERGROUND UTILITY RELOCATION AS HIS SCHEDULE REQUIRES.
- THE PLANS AND SUPPLEMENTARY DRAWINGS SHALL NOT BE SCALED AND THE CONTRACTOR MUST VERIFY ALL DIMENSIONS AND ELEVATIONS AT THE SITE PRIOR TO PROCEEDING WITH THE WORK.
- CONTRACTOR SHALL PERFORM WORK IN A MANNER AS TO MINIMIZE THE EROSION OF SOILS.
- CONTRACTOR SHALL RETURN ALL EXISTING MANHOLE FRAMES AND COVERS TO THE CITY OF ROANOKE AND DELIVER THEM TO A LOCATION SPECIFIED BY THE CITY.
- THE CONTRACTOR IS RESPONSIBLE FOR LOCATING ALL SERVICE LATERALS, INCLUDING THOSE CONNECTED TO THE ABANDONED SEWER LINE, AND CONNECTING THEM TO THE NEW SEWER LINE.
- THE CONSTRUCTION DRAWINGS SHOW THE SEWER REPLACEMENT IN THE SAME TRENCH AS THE EXISTING SEWER PIPE IN THE CENTER OF THE EASEMENT. THE CONTRACTOR WILL HAVE TO PUMP RAW SEWAGE DURING CONSTRUCTION. CONTRACTOR SHALL DISPOSE OF THE EXISTING SEWER PIPE OFF THE PROJECT SITE, IN ACCORDANCE WITH THE LAW.



Mattern & Craig  
CONSULTING ENGINEERS - SURVEYORS

DESIGNED: TAM  
DRAWN: SMM  
CHECKED: SWH



REV.	DATE	DESCRIPTION	BY	APP.
1	9-96	ADDED TEMPORARY CONSTRUCTION EASEMENT	TAM	SWH
2	7-97	RECORD DRAWINGS	MRL	SWH

DATE  
JANUARY  
1994  
COMM. NO.  
1245F

LICK RUN SANITARY SEWER REPLACEMENT  
PROJECT LR-2  
SHEET INDEX & GENERAL NOTES  
CITY OF ROANOKE, VIRGINIA  
SCALE: 1"=100'

SHEET  
4

ACAD:1245F4