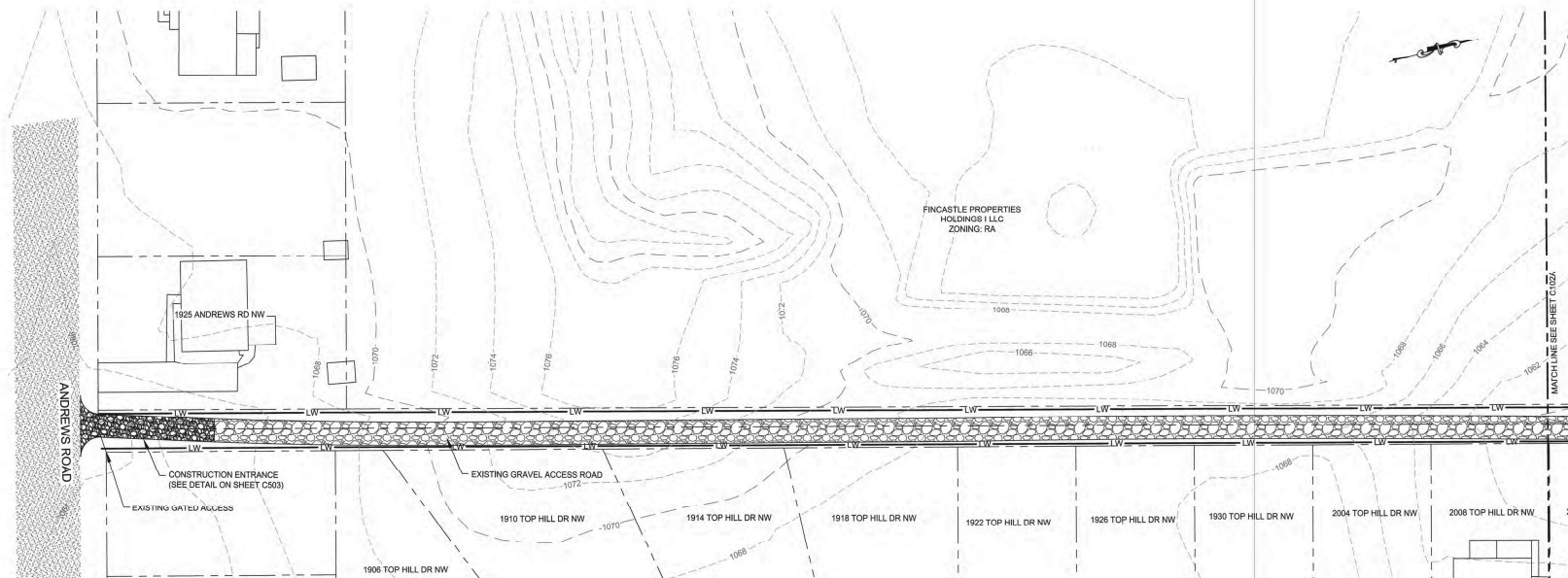


Project Management Initials: _____ Designer: _____ Checker: _____ Approver: _____

Last saved by: BETH PRESLEY (2018-01-11) Last Picked: 2018-01-18
Filename: U:\60505031-LICK RUN INTERCEPTOR REHABILITATION\60505031-CADD\02-SHEET\02B.DWG



* NO SANITARY SEWER MAIN OR MANHOLE
REHABILITATION THIS SHEET.



NOTES:

1. LIMITS OF WORK THIS SHEET PERTINENT TO VEHICULAR EQUIPMENT ACCESS AS REQUIRED TO PERFORM THE REHABILITATION WORK.
2. IT SHALL BE UNDERSTOOD AND AGREED UPON BY THE CONTRACTOR THAT ONLY THOSE TREES THAT DIRECTLY INTERFERE WITH THE CONSTRUCTION OF THE WORK MAY BE REMOVED WITHIN THE LIMITS OF WORK. TREES FOUR INCHES (4") IN DIAMETER OR SMALLER MAY BE REMOVED. NO TREE GREATER THAN FOUR INCHES (4") IN DIAMETER SHALL BE REMOVED WITHOUT THE APPROVAL OF THE OWNER. ALL COSTS ASSOCIATED WITH CLEARING/GRUBBING, SITE CLEARING, AND TREE/SHRUB REMOVAL SHALL BE INCLUDED IN THE BID PRICE.

AECOM

PROJECT
**LICK RUN
INTERCEPTOR
REHABILITATION**

CLIENT



601 South Jefferson St. Suite 300
Roanoke, VA 24011
540.853.5700 tel 540.283.8212 fax
www.westernva.water.org

CONSULTANT

AECOM
10 S. Jefferson St. Suite 1600
Roanoke, VA 24011
540.857.3100 tel 540.857.3180 fax
www.aecom.com

REGISTRATION



ISSUE/REVISION

IR	DATE	DESCRIPTION

PROJECT NUMBER

60505031

SHEET TITLE

SANITARY SEWER
REHABILITATION PLAN

SHEET NUMBER

C102B