

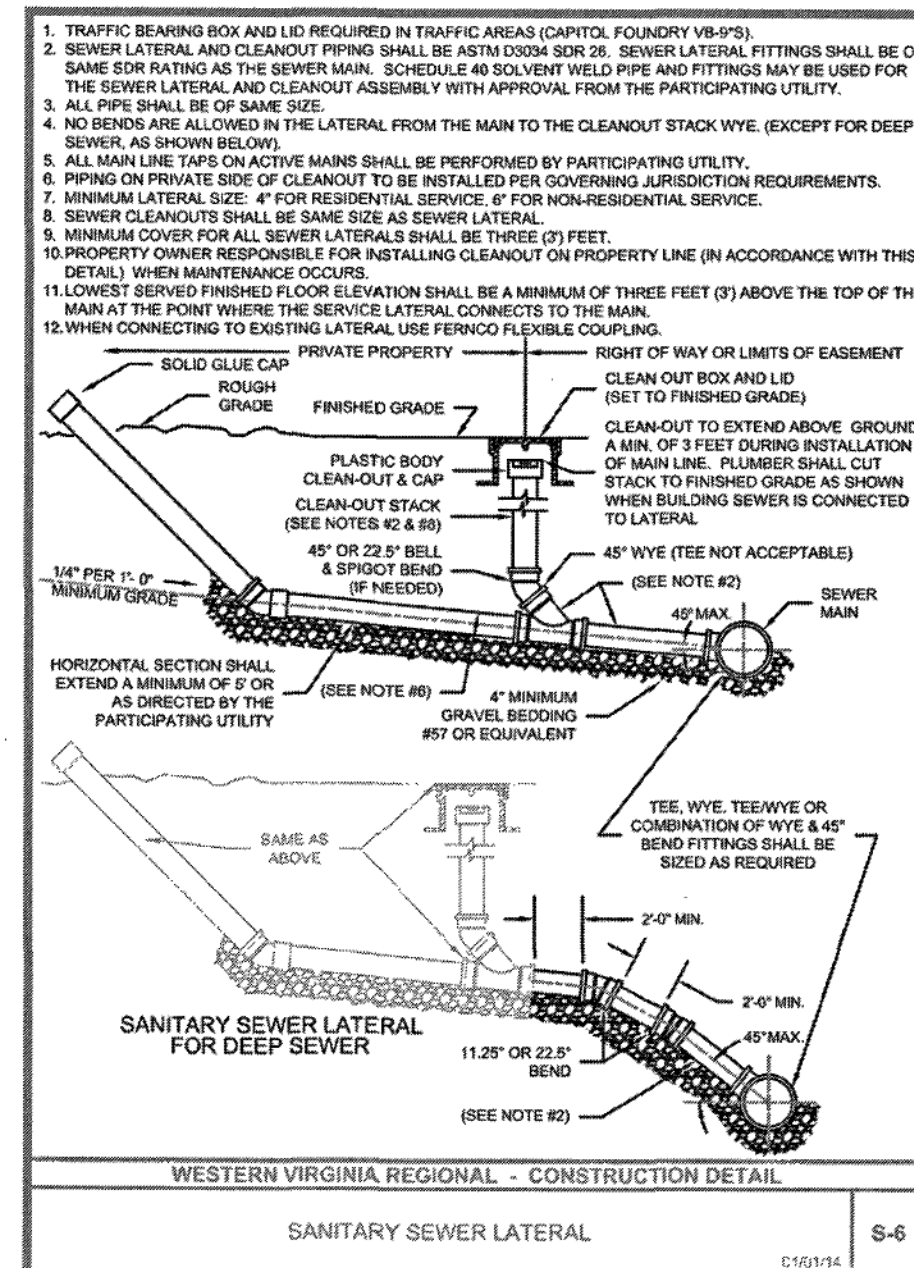
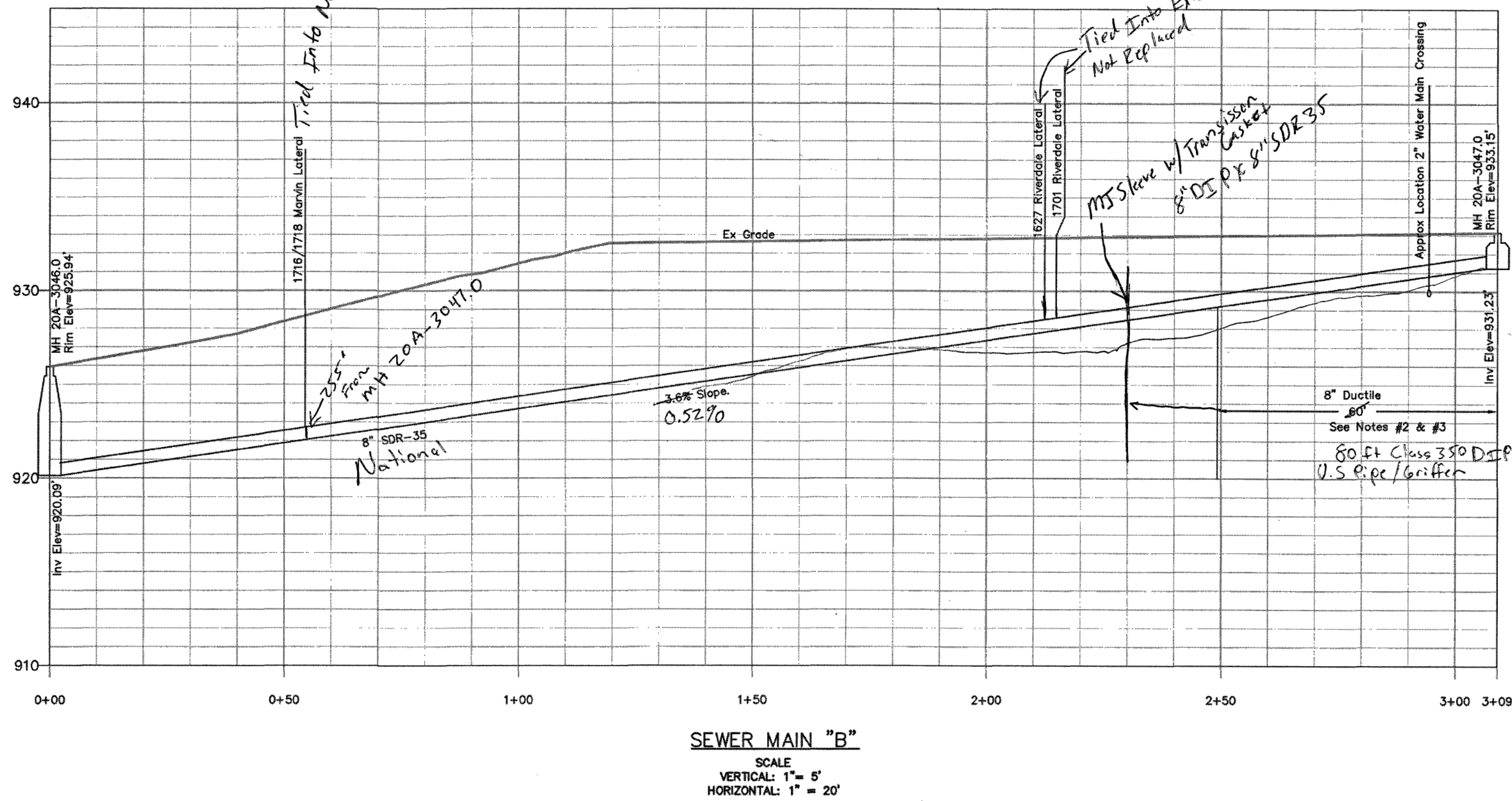
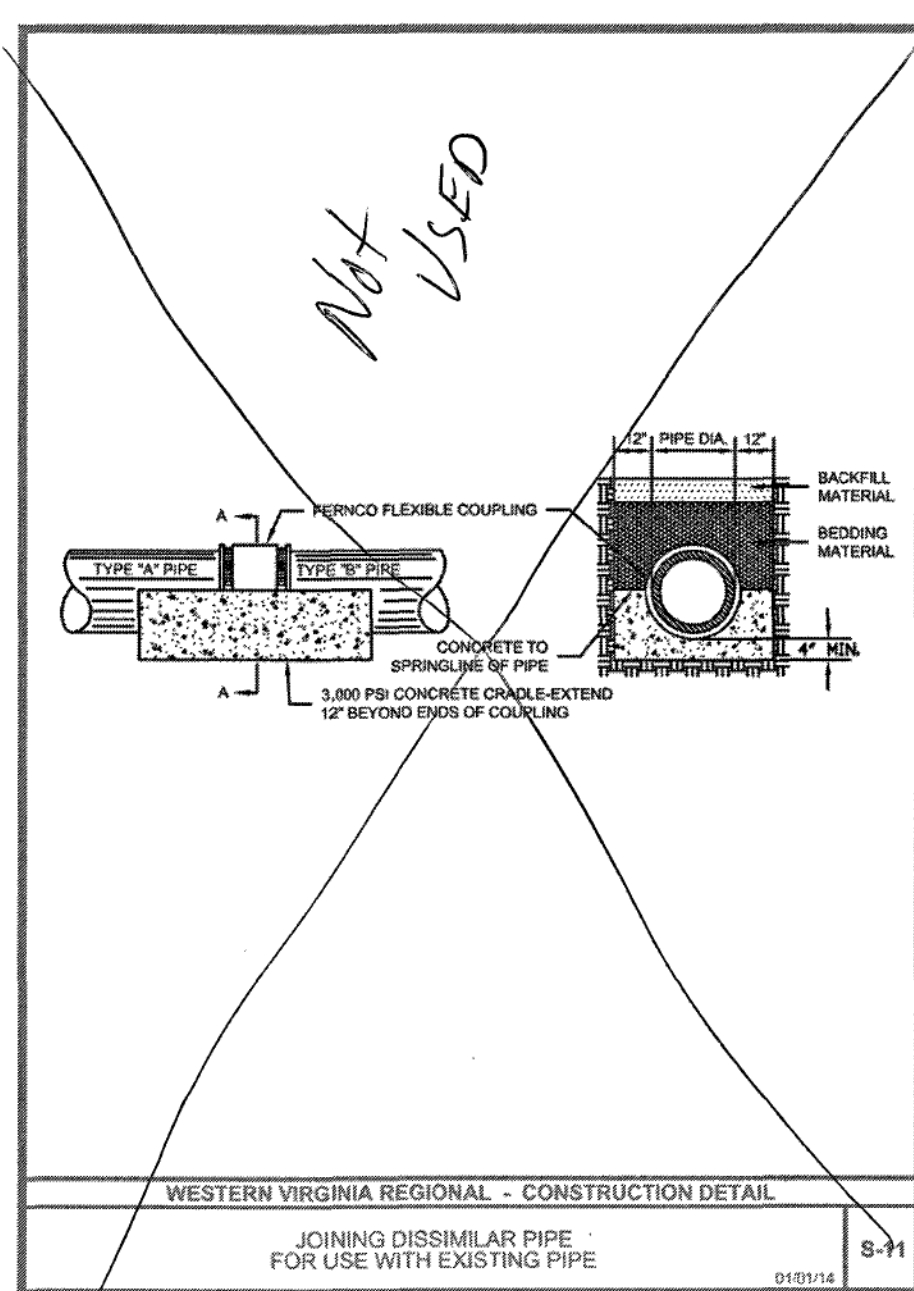
Notes:

1. If manhole 20A-3047.0 depth allows, replace 6" sewer main with 8" main.
2. SDR-35 shall have a minimum cover of 36". Ductile pipe shall be placed from 20A-3047.0 until 36" of cover can be obtained. Actual length of ductile pipe installed to be determined in the field based on cover depth.
3. Connection of SDR-35 and ductile shall be made per S-11 detail.
4. Sewer Laterals:
 - 1627 Riverdale approx 96.6' from 20A-3047.0
 - 1701 Riverdale approx 94.2' from 20A-3047.0
 - 1716/1718 Martin approx 54.5' from 20A-3046.0
5. Laterals for 1627 and 1701 Riverdale appear to be PVC. If laterals are not in good condition, they shall be replaced. WVA Inspector shall confirm condition and determine if replacement is necessary.

ENGINEERING SERVICES
601 S JEFFERSON ST, SUITE 300
ROANOKE, VA 24011
540-853-5700

Marvin St SE Sewer
Replacement

PLAN & PROFILE



Pipe: 8" DIP CL350 U.S. Pipe/Griffin
8" SDR35 National
4" SDR26 National (Laterals)

Project Manager: C. Altice
Inspector: Brian Whitenach As-built

4/12/17

Rev	Description	Date	By

Designed:
Drawn:
Checked:
Approved:
Date: 4/3/17
Project:

1 of 1
Sheet 1 of 1