

DEMOLITION LEGEND

- STRUCTURE/BUILDING DEMOLITION
- HARDSCAPE DEMOLITION
- LINEAR UTILITY DEMOLITION
- REMOVE TREE AND STUMP

FIELD REVISION #1

- UPDATED LIMITS AND SILT FENCE FOR THE INSTALLATION OF STRUCTURES 18 & 19

DEMOLITION NOTES:

- CONTRACTOR SHALL COMPLETE UTILITY DISCONNECTING AND SEALING, WITH WRITTEN VERIFICATION FROM UTILITY PROVIDERS PRIOR TO DEMOLITION AT CONNECTIONS TO BUILDINGS.
- WATER PIPES AND APPURTENANCES TO BE PERMANENTLY INACTIVE SHALL BE REMOVED TO A JOINT AFTER BEING CAPPED WITH A WATER-TIGHT SEAL. INSTALL STEEL POST OR OTHER VISIBLE ABOVE-GROUND MEASURE TO INDICATE END OF PIPE TO REMAIN PRIOR TO BACKFILL. MUST BE APPROVED AND INSPECTED BY THE CITY OF ROANOKE ENGINEERING FIELD SUPERVISOR OR DESIGNEE.
- SANITARY AND STORM PIPES SHALL BE CAPPED AND THEN REMOVED TO THE NEAREST DOWNSTREAM STRUCTURE. INVERT SHALL BE SEALED PER PIPE ABANDONMENT DETAIL. MUST BE APPROVED AND INSPECTED BY THE CITY OF ROANOKE ENGINEERING FIELD SUPERVISOR OR DESIGNEE.
- ELECTRICAL, CABLE, TELECOM, AND OTHER UTILITIES SHALL BE REMOVED TO THE NEAREST PULL BOX OR MANHOLE.
- ALL HARDSCAPE AND PRINCIPAL STRUCTURES TO BE DEMOLISHED SHALL BE EXCAVATED TO SUBGRADE AND BACKFILLED PER THE PHASED GRADING PLAN.
- IF FIRE HYDRANTS ARE TO BE REMOVED, THEY MUST BE REMOVED BY CITY PERSONNEL. CONTRACTOR SHALL COORDINATE ASSOCIATED WATERLINE ABANDONMENT WITH THE CITY OF ROANOKE ENGINEERING FIELD SUPERVISOR OR DESIGNEE.
- CONTRACTOR TO REMOVE FENCING AS NECESSARY FOR CONSTRUCTION. CONTRACTOR TO COORDINATE WITH MEMBER ONE FEDERAL CREDIT UNION FOR DIRECTION OF DEMOLITION/RECYCLING OF EXISTING FENCING MATERIALS.

PHASING NOTES:

- PHASE III DEMOLITION INVOLVES DEMOLITION OF UTILITIES AND PARKING TO SUPPORT THE PROPOSED BUILDING ADDITION TO THE SOUTH WEST PORTION OF THE SITE.
- PHASE III ALSO INCLUDES THE ADDITION OF PARKING TO THE NORTH OF THE SITE.
- PHASE IV DEMOLITION INCLUDES THE REMOVAL OF THE STAIRS, LANDSCAPING AND SIDEWALK THAT JOINS THE NORTH AND SOUTHERN PORTIONS OF THE SITE TO ADD ADDITIONAL PARKING.

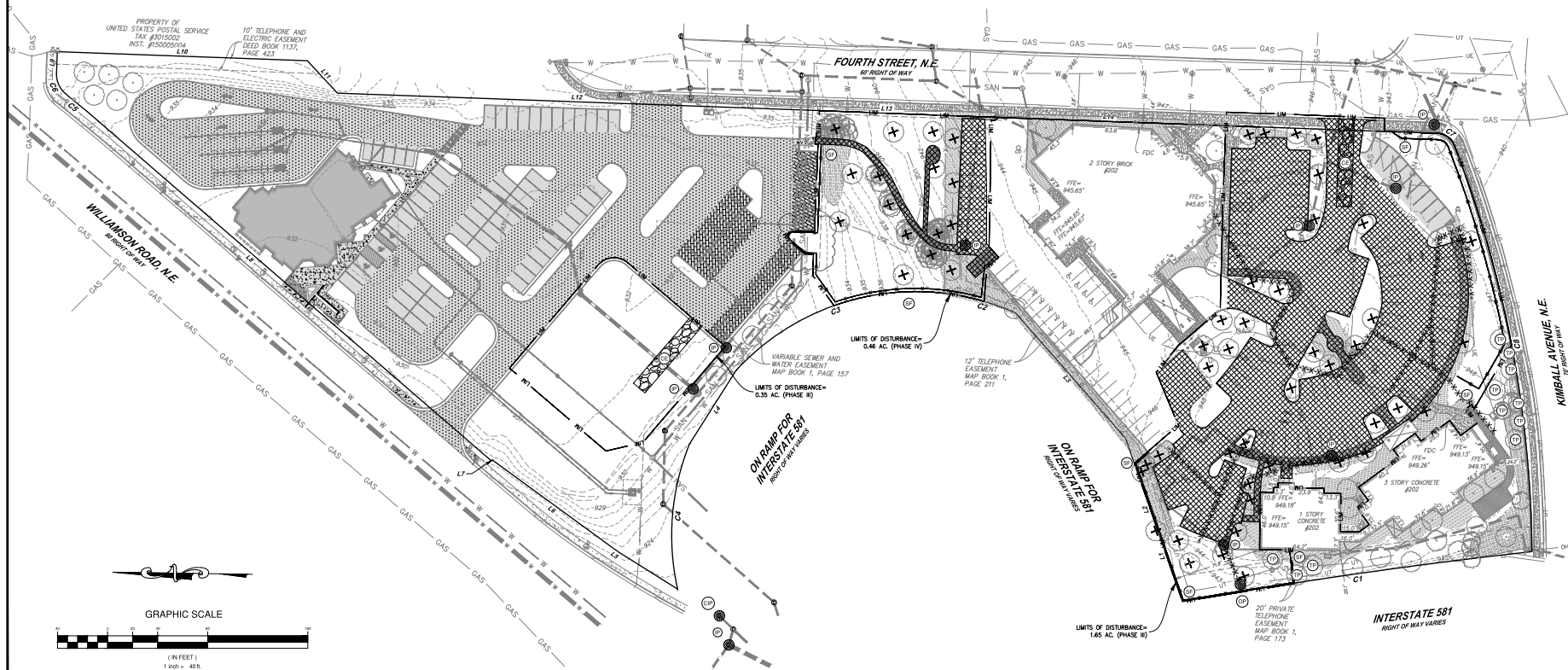
PHASE III & IV SEQUENCE OF CONSTRUCTION:

- CONSTRUCTION WILL BE SEQUENCED TO INSTALL INITIAL EROSION AND SEDIMENT CONTROL MEASURES PRIOR TO DEMOLITION.
- CONTRACTOR SHALL INSTALL CONSTRUCTION ENTRANCE AS SHOWN ON PLANS. CONTRACTOR SHALL MAINTAIN THE CONSTRUCTION ENTRANCE PER VA ESCH STD. & SPEC 3.02. CONTRACTOR MAY UTILIZE ONE OR BOTH CONSTRUCTION ENTRANCES AS SHOWN ON PLANS.
 - CONTRACTOR SHALL INSTALL SILT FENCE ALONG RIGHT OF WAY. SILT FENCE ALONG DEMOLISHED PARKING AREA SHALL BE INSTALLED IMMEDIATELY AFTER PAVEMENT REMOVAL.
 - CONTRACTOR SHALL INSTALL INITIAL ESC MEASURES. DEMOLISH ITEMS AS NECESSARY TO INSTALL INITIAL ESC MEASURES.
 - AFTER THE INITIAL MEASURES ARE INSTALLED, THE CONTRACTOR SHALL REVIEW GENERAL CONSTRUCTION SEQUENCE AND/OR PHASE EROSION CONTROL MEASURES.
 - TOPSOIL STOCKPILING MAY OCCUR IN THE GENERAL LOCATION AS SHOWN ON THE PLAN OR OTHER SUITABLE LOCATIONS DETERMINED BY THE CONTRACTOR. SILT FENCE SHALL BE PLACED AROUND THE PERIMETER OF THE STOCKPILE. TEMPORARY SEEDING MEASURES APPLY TO STOCKPILES.
 - THE CONTRACTOR SHALL CHECK AND VERIFY ALL EXISTING PERIMETER EROSION AND SEDIMENT CONTROL MEASURES AROUND THE SITE. ANY PERIMETER EROSION CONTROL MEASURES THAT ARE DAMAGED SHALL BE REPAIRED TO CONTROL SEDIMENT LADEN RUNOFF FROM ENTERING ADJACENT PROPERTIES AND/OR STREAMS AND SWALES.
 - IN ANY AREAS WHERE SEDIMENT LADEN WATER IS BEING PUMPED FROM A LOCATION, THE PUMPED RUNOFF SHALL BE FILTERED THROUGH A "FILTER BAG" BEFORE BEING RELEASED.
 - THE CONTRACTOR SHALL KEEP MATERIALS AND EQUIPMENT ON-SITE TO KEEP DUST LEVELS AT A MINIMUM.
 - THE CONTRACTOR SHALL MAINTAIN THE EROSION AND SEDIMENT CONTROL MEASURES AS IDENTIFIED UNDER THE "MAINTENANCE" SECTION OF THIS DOCUMENT.
 - SEDIMENT SHALL BE REMOVED FROM MEASURES PRIOR TO SEDIMENT REACHING ONE-HALF THE BARRIER FOR SILT FENCE.
 - ALL VEGETATIVE AND STRUCTURAL EROSION AND SEDIMENT CONTROL PRACTICES WILL BE CONSTRUCTED AND MAINTAINED ACCORDING TO MINIMUM STANDARDS AND SPECIFICATIONS OF THE VIRGINIA EROSION AND SEDIMENT CONTROL HANDBOOK (VA ESCH) AND VIRGINIA REGULATION VRI 625-02-00.
 - ALL DISTURBED AREAS ARE TO DRAIN TO APPROVED SEDIMENT CONTROL MEASURES AT ALL TIMES DURING LAND DISTURBING ACTIVITIES AND DURING SITE DEVELOPMENT UNTIL FINAL STABILIZATION IS REACHED.
 - THE CONTRACTOR IS RESPONSIBLE FOR THE INSTALLATION OF ANY ADDITIONAL EROSION CONTROL MEASURES NECESSARY TO PREVENT EROSION AND SEDIMENTATION AS DETERMINED BY THE LOCAL AUTHORITY.
 - THE CONTRACTOR SHALL INSPECT ALL EROSION CONTROL MEASURES PERIODICALLY AND AFTER EACH RUNOFF PRODUCING RAINFALL EVENT, ANY NECESSARY REPAIRS OR CLEANUP TO MAINTAIN THE EFFECTIVENESS OF THE EROSION CONTROL DEVICES SHALL BE MADE IMMEDIATELY.

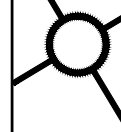
EROSION AND SEDIMENT CONTROL MEASURES:

PROVIDE THE FOLLOWING AS REQUIRED PER PHASE:

- CONSTRUCTION ENTRANCE MEETING VA ESCH STD. & SPEC. 3.02
- SILT FENCE MEETING VA ESCH STD. & SPEC. 3.05
- INLET PROTECTION MEETING VA ESCH STD. & SPEC. 3.07
- CULVERT INLET PROTECTION MEETING VA ESCH STD. & SPEC. 3.08
- OUTLET PROTECTION MEETING VA ESCH STD. & SPEC. 3.18
- TOPSOILING MEETING VA ESCH STD. & SPEC. 3.30
- TEMPORARY SEEDING MEETING VA ESCH STD. & SPEC. 3.31
- MULCHING MEETING VA ESCH STD. & SPEC. 3.35
- DUST CONTROL MEETING VA ESCH STD. & SPEC. 3.39



These documents are the property of Parker Design Group, Inc. and may not be reproduced or used without the express permission of Parker Design Group, Inc. The user of these documents acknowledges that Parker Design Group, Inc. and its representatives shall not be liable for any errors or omissions in these documents.



MEMBER ONE FEDERAL CREDIT UNION
FIELD REVISION #1
202 4TH STREET, N.E.
CITY OF ROANOKE, VIRGINIA

REVISIONS
1ST REVIEW COMMENTS: JANUARY 28, 2021
2ND REVIEW COMMENTS: FEBRUARY 26, 2021
FIELD REVISION #1: JULY 08, 2021

DESIGNED BY: PDG
DRAWN BY: CEP / JMD
CHECKED BY: JDE
SCALE: 1" = 40'
DATE: NOVEMBER 09, 2020
PROJECT NUMBER: 19-0135

SHEET TITLE: PHASE III & IV DEMOLITION & INITIAL ESC PLAN

C10