

Western Virginia Water Authority Notes

General Notes:

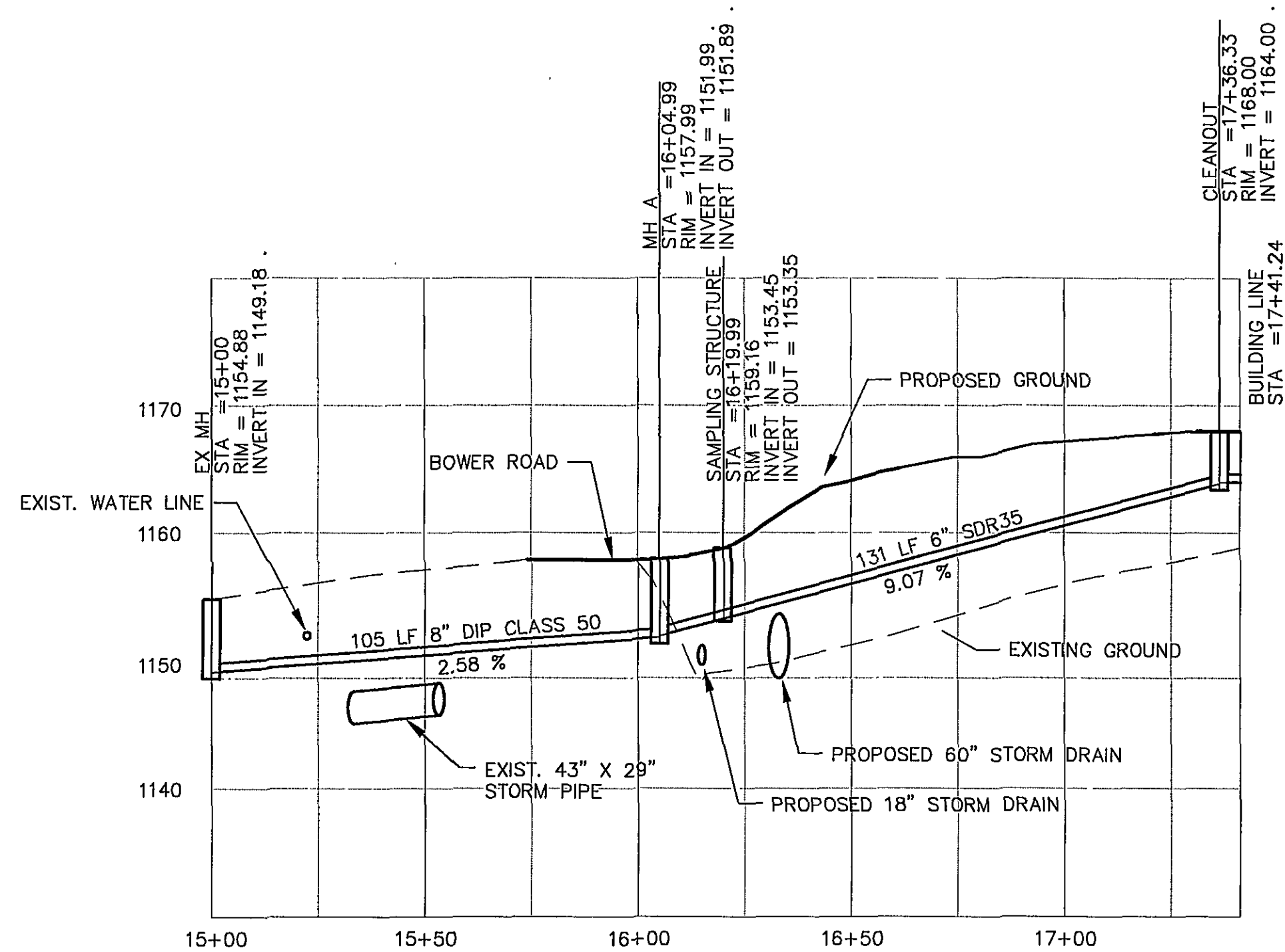
- All construction methods and materials shall conform to the Construction Standards and Specifications of Roanoke County, the Western Virginia Water Authority, and/or the Virginia Department of Transportation.
- The contractor or developer is required to notify the Roanoke County Engineering Division and the Western Virginia Water Authority in writing at least three (3) days prior to any construction, including but not limited to the following.
- A pre-construction conference should be scheduled with the Roanoke County Engineering Division and the Western Virginia Water Authority, to be held at least one (1) day prior to any construction.
- The developer or contractor shall supply the County and the Western Virginia Water Authority with correct As-Built plans before final acceptance.
- All work shall be subject to inspection by Roanoke County, the Western Virginia Water Authority, and/or V.D.O.T. Inspectors.
- Field corrections shall be approved by the Roanoke County Engineering Division and the Western Virginia Water Authority prior to such construction.

Sewer Notes:

- All sanitary sewer connections to existing lines shall be coordinated with and performed by the Western Virginia Water Authority.
- All sanitary sewer facilities are to be installed according to the Western Virginia Water Authority Design and Construction Standards.

Water Notes:

- All water connections to existing lines shall be coordinated with and performed by the Western Virginia Water Authority.
- All water facilities are to be installed according to the Western Virginia Water Authority Design and Construction Standards.



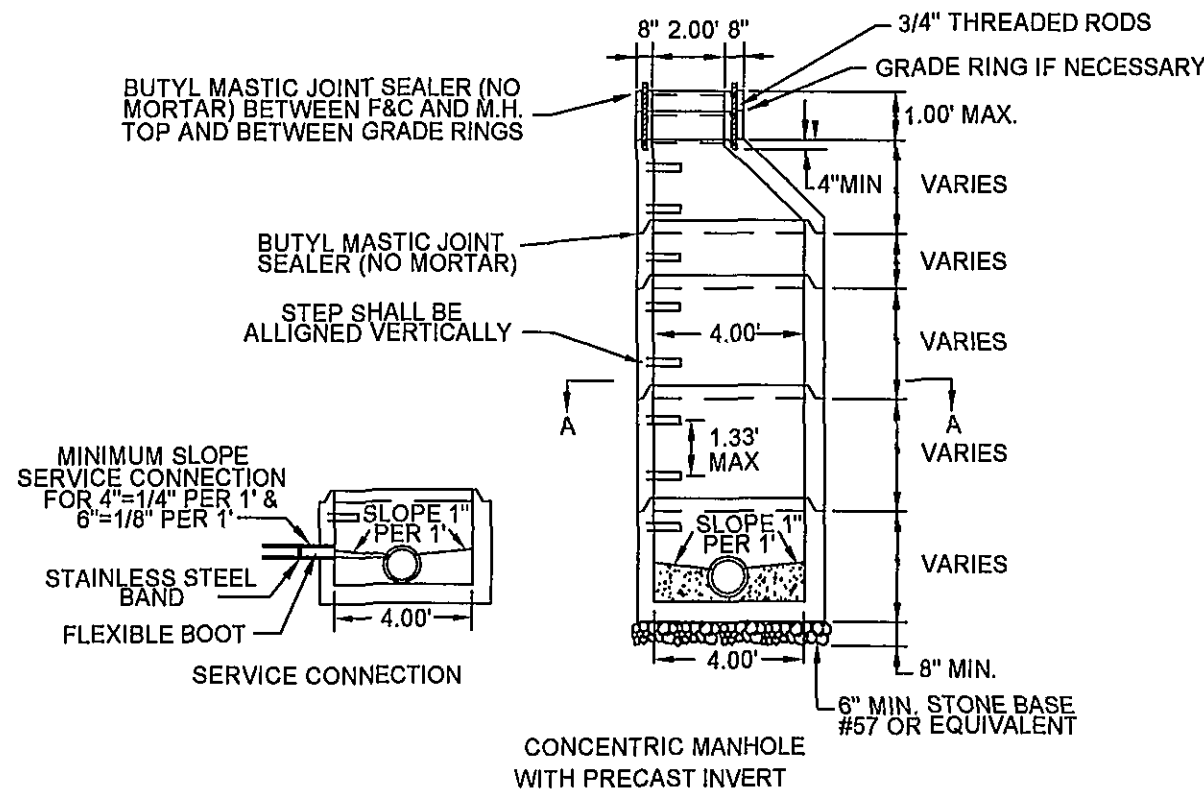
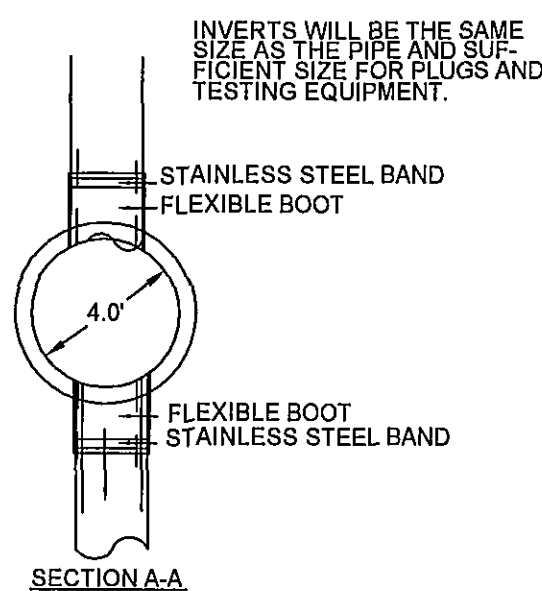
SANITARY SEWER LINE PROFILE

SCALE H: 1" = 30'
V: 1" = 10'

NOTE: DISTANCES SHOWN ON PROFILE ARE TO THE CENTERS OF THE STRUCTURES AND ARE NOT LENGTH OF PIPE.

NOTES:

- ALL MANHOLE FRAMES AND COVERS SHALL BE EAST JORDAN IRON WORKS, INC. WATERTIGHT MANHOLE FRAME MODEL #1045Z, WATERTIGHT COVER MODEL #1040ACLS OR APPROVED EQUAL. BOLT-DOWN MODEL TO BE USED IN AREAS SUBJECT TO FLOODING OR AS DIRECTED BY THE AUTHORITY.
- STEPS TO BE VERTICALLY ALIGNED.
- THE FRAME AND COVER SHALL BE PROPERLY ALIGNED WITH THE 2 FOOT OPENING OF THE MANHOLE STRUCTURE AND BOLTED IN PLACE.
- FLAT TOP MANHOLES MAY ONLY BE SUBSTITUTED WITH THE PERMISSION OF THE UTILITY DIRECTOR. WHEN USED, THE ECCENTRIC OPENING MUST LINE UP WITH THE STEPS.
- SAMPLING MANHOLES IN TRAFFIC AREAS SHALL BE CONSTRUCTED AS PER MANHOLE DETAILS.
- FLEXIBLE JOINT MANHOLE CONNECTION SHALL BE AS MANUFACTURED BY PRES-SEAL GASKET CORPORATION OR EQUAL.
- GROUT ANNUAL SPACE BETWEEN PIPE AND PRECAST MANHOLE ON INSIDE OF MANHOLE.

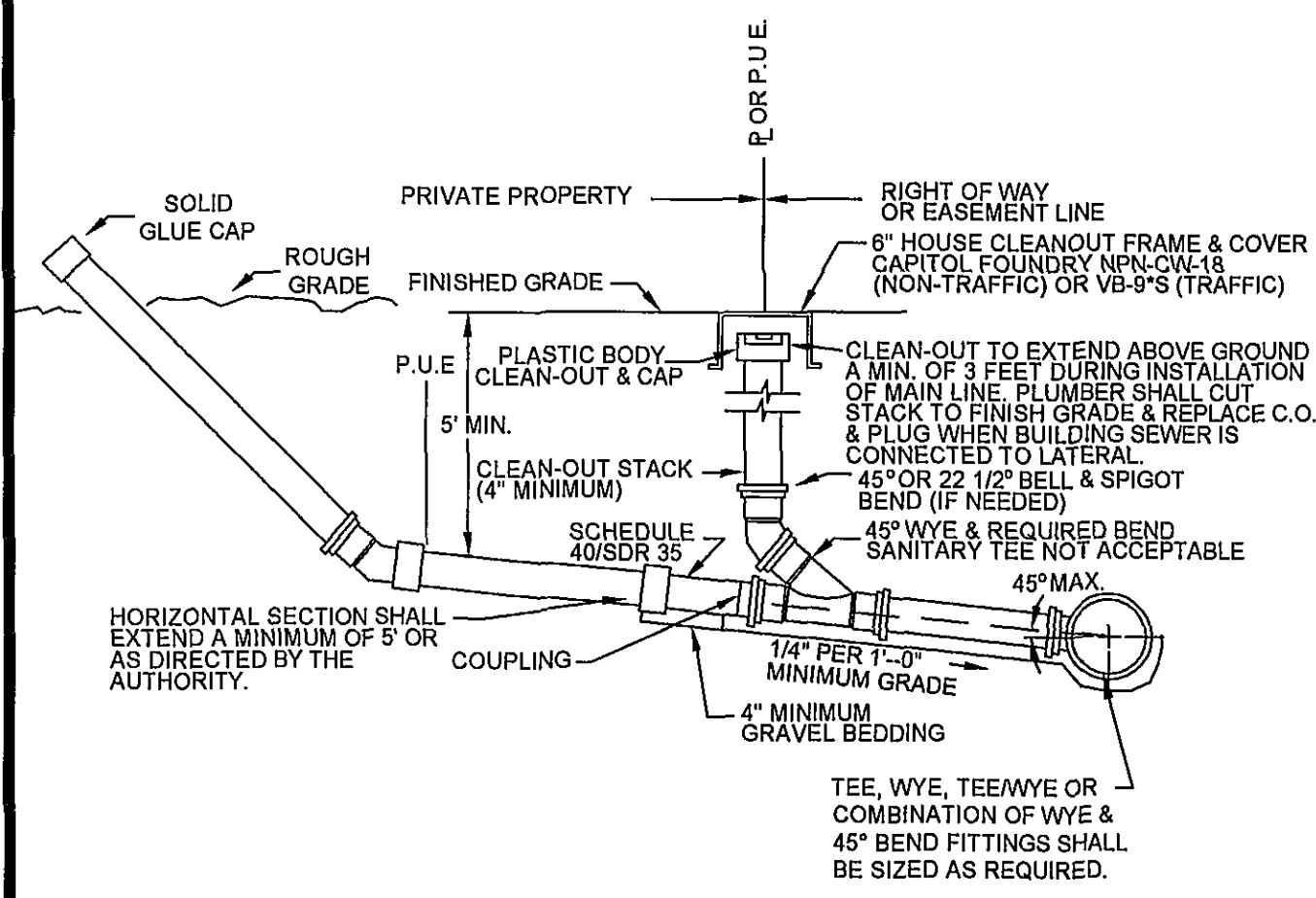


WESTERN VIRGINIA WATER AUTHORITY - CONSTRUCTION STANDARDS

REVISION	DATE	DESCRIPTION	BY
07/01/04		4' STANDARD MANHOLE FOR PIPE 15" OR SMALLER	S-01

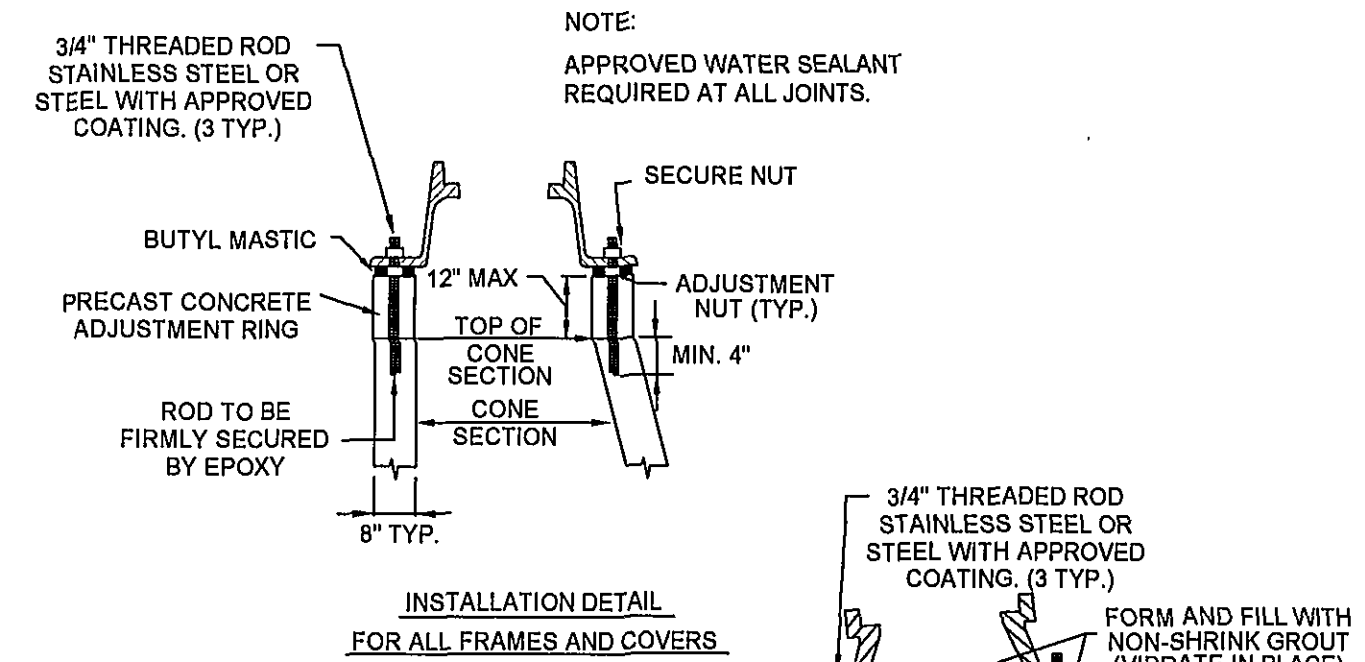
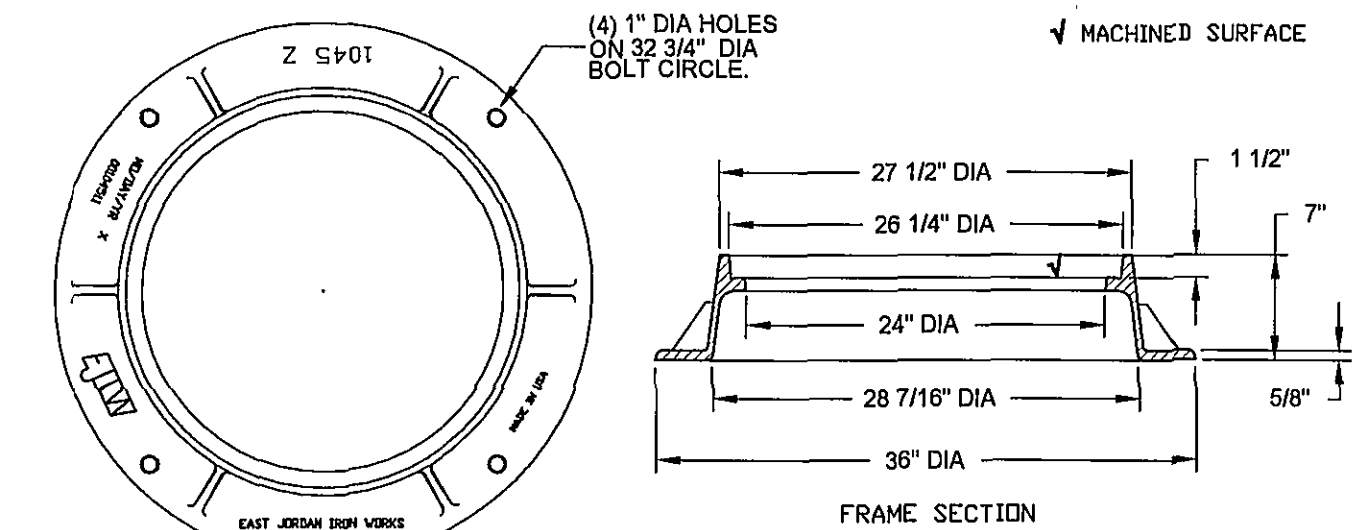
GENERAL NOTES:

- TRAFFIC BEARING BOX REQUIRED IN TRAFFIC AREAS.
- ALL PIPE AND FITTINGS SHALL BE OF SIMILAR MATERIAL.
- ALL PIPE SHALL BE OF SAME SIZE.
- NO BENDS ARE ALLOWED IN THE LATERAL FROM THE MAIN TO THE CLEANOUT STACK WYE. (EXCEPT AS NOTED)
- ALL MAIN LINE TAPS ON ACTIVE MAINS WILL BE PERFORMED BY WESTERN VIRGINIA WATER AUTHORITY.
- PIPING BEHIND CLEANOUT TO BE INSTALLED PER BOCA CODE.
- MINIMUM LATERAL SIZE: 4" FOR RESIDENTIAL SERVICE 6" FOR NON-RESIDENTIAL SERVICE
- MINIMUM COVER FOR ALL SEWER LATERALS SHALL BE THREE(3) FEET.
- PROPERTY OWNER RESPONSIBLE FOR INSTALLING CLEANOUT ON PROPERTY LINE WHEN MAINTENANCE OCCURS.



WESTERN VIRGINIA WATER AUTHORITY - CONSTRUCTION STANDARDS

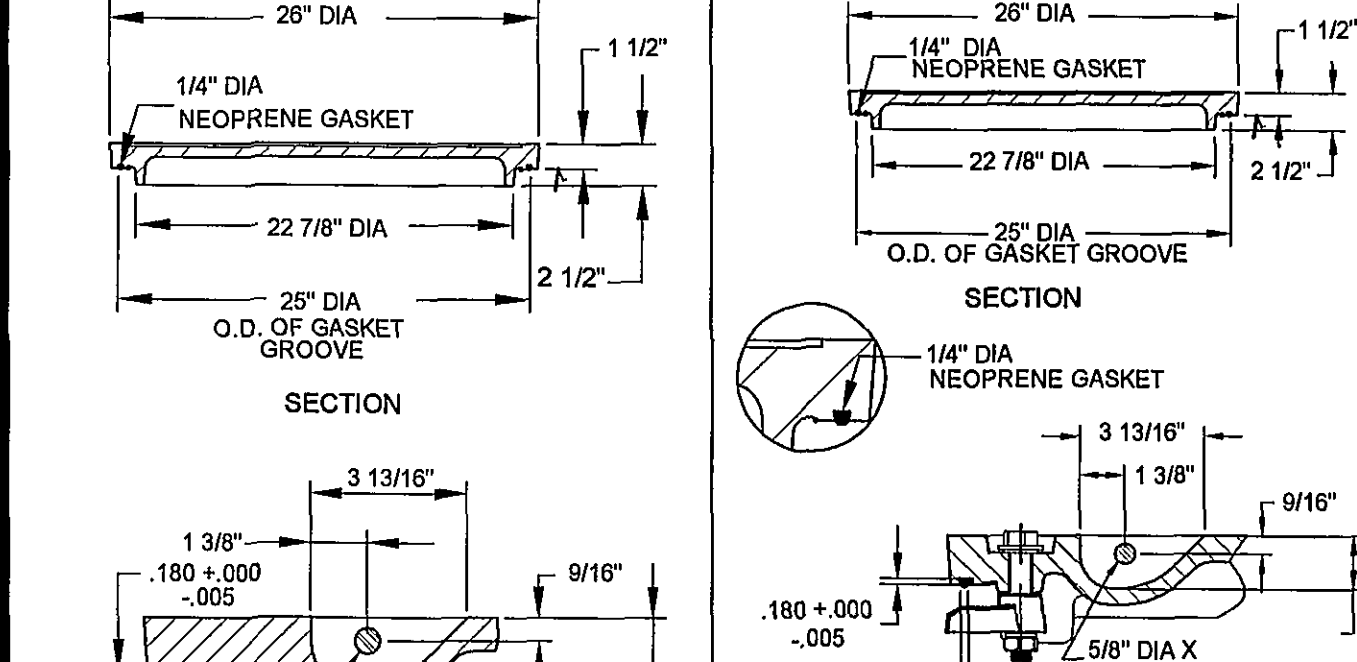
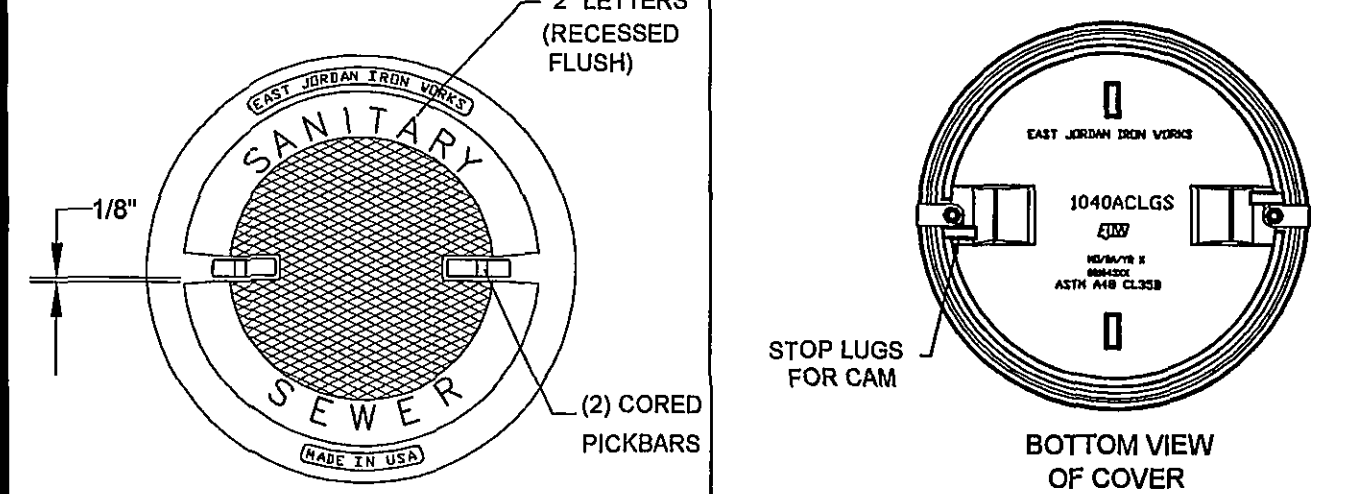
REVISION	DATE	DESCRIPTION	BY
07/01/04		SANITARY SEWER LATERAL	S-08



WATERTIGHT MANHOLE FRAME MODEL #1045Z BY EAST JORDAN IRON WORKS, INC. OR EQUIVALENT.

WESTERN VIRGINIA WATER AUTHORITY - CONSTRUCTION STANDARDS

REVISION	DATE	DESCRIPTION	BY
07/01/04		WATERTIGHT MANHOLE FRAME	S-05



STANDARD MANHOLE COVER BY EAST JORDAN IRON WORKS, INC. OR EQUIVALENT.

WESTERN VIRGINIA WATER AUTHORITY - CONSTRUCTION STANDARDS

REVISION	DATE	DESCRIPTION	BY
07/01/04		WATERTIGHT MANHOLE COVER	S-06

REVISIONS:

NO.	DATE	DESCRIPTION
1	March 28, 2005	County & VDOT Comments
2	May 4, 2005	County VDOT & WVA Comments
3	May 19, 2005	County Comments

DESIGNED BY: GST

DRAWN BY: GST

CHECKED BY: SRB

SCALE: As Noted

DATE: November 16, 2004

SHEET TITLE:
Sanitary Sewer Profiles & Details

C08
08 OF 12
PROJECT NUMBER:
S04009-02

These documents are the property of Barnes Group Bower & Taylor DESIGN GROUP (BG&T) and may not be reproduced or used without the express permission of BG&T. Any use of these documents without authorization of BG&T will be at the sole risk of the individual or entity utilizing said documents.



Member One Federal Credit Union
Route 419, Roanoke County
Prepared for Thor, inc.
Windsor Hills Magisterial District
Roanoke County, Virginia

■ Barnes Group Bower & Taylor ■
DESIGN GROUP, PC
LANDSCAPE ARCHITECTS • ENGINEERS • PLANNERS
201 E. Main Street
Suite 100
Salem, Virginia 24153
Phone: 540.387.9100
Fax: 540.387.9101
www.bgbt-design.com