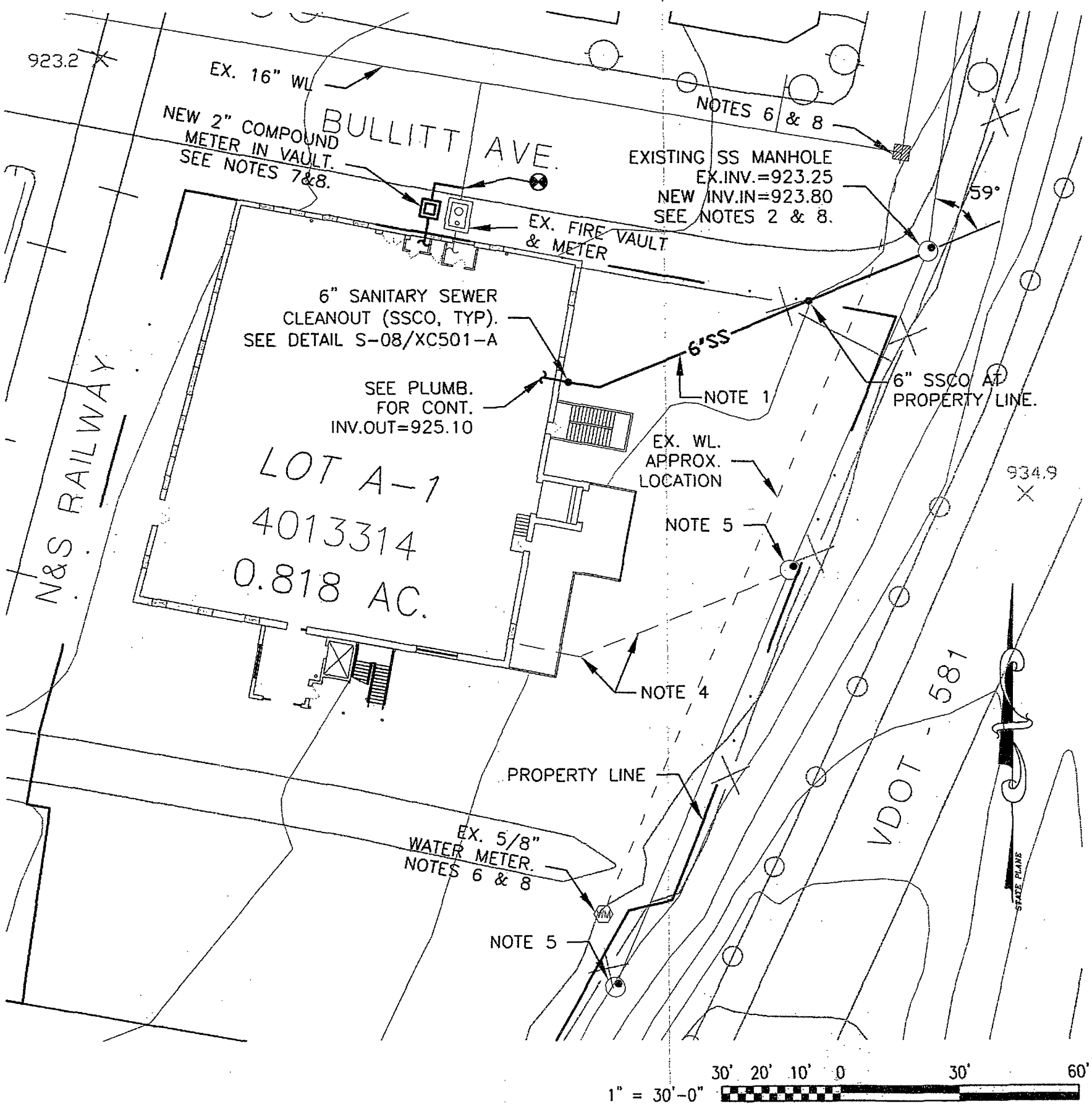


NOTES:

1. NEW 6" SCHEDULE-40 PVC SEWER LATERAL FROM BUILDING TO EXISTING SEWER MANHOLE. SEE DETAIL S-31 ON SHEET XC501-B FOR TYPICAL SECTION. MINIMUM SLOPE 1.08%.
2. PROVIDE WESTERN VIRGINIA WATER AUTHORITY (WVWA) WITH A MINIMUM OF 48 HOURS NOTIFICATION PRIOR TO CONNECTING TO EX. MANHOLE. CORE EX. MANHOLE AND BOOT NEW CONNECTION IN ACCORDANCE WITH WVWA STANDARDS. ABANDON EXISTING UPSTREAM SEWER LINE PER DETAIL S-22 ON SHEET XC501-C.
3. ALL TOPOGRAPHICAL INFORMATION PROVIDED FROM ROANOKE CITY AND WVWA GIS DATABASE.
4. APPROX. LOCATION OF EXISTING LATERAL. ABANDON IN PLACE & CAP BOTH ENDS IN ACCORDANCE WITH WVWA STANDARDS.
5. CONTRACTOR SHALL LOCATE AND UNCOVER TWO (2) EX. MANHOLES TO BE ABANDONED. IF FOUND ON PROJECT PROPERTY, CONTRACTOR TO ABANDON IN PLACE PER DETAIL S-23 ON SHEET XC501-D. IF FOUND ON ADJACENT PROPERTY (VDOT), WVWA TO ABANDON.
6. CONTRACTOR SHALL ABANDON EXISTING WATER METER AND SUPPLY LINE AT EX. CORPORATION STOP ON BULLITT AVE. IN ACCORDANCE WITH WVWA STANDARDS. COORDINATE ABANDONMENT WITH WVWA SITE INSPECTOR.
7. NEW 3" CONNECTION FOR DOMESTIC WATER. INSTALL NEW WATER VAULT AND 2" COMPOUND METER IN SIDEWALK PER DETAIL W-05 ON SHEET XC501-E AND WVWA STANDARDS, 30"x30" MINIMUM INTERIOR. TAP EXISTING 6" SUPPLY LINE IN BULLITT AVE WITH NEW 3", CONTRACTOR TO FURNISH TAPPING SLEEVE AND VALVE. WET TAP SHALL BE COORDINATED WITH WVWA SITE INSPECTOR.
8. COORDINATE WITH THE CITY OF ROANOKE FOR ALL WORK COMPLETED WITHIN PUBLIC RIGHT-OF-WAY. CITY OF ROANOKE EXCAVATION PERMIT IS REQUIRED FOR ALL DISTURBANCE WITHIN RIGHT-OF-WAY.



SPECTRUM DESIGN
architects | engineers
10 CHURCH AVENUE SE
PLAZA SUITE 1
ROANOKE, VIRGINIA 24011
540.342.6001



**207 BULLITT
RENOVATIONS -
WVWA WATER
& SEWER PLAN**

TITLE:

DRAWN BY:
MAG

CHECKED BY:
MAR

COMM. NO.
1

DATE:
10/14/10

REVISIONS

DATE

As-Built 2011

XC102-A

DRAWING NO.