

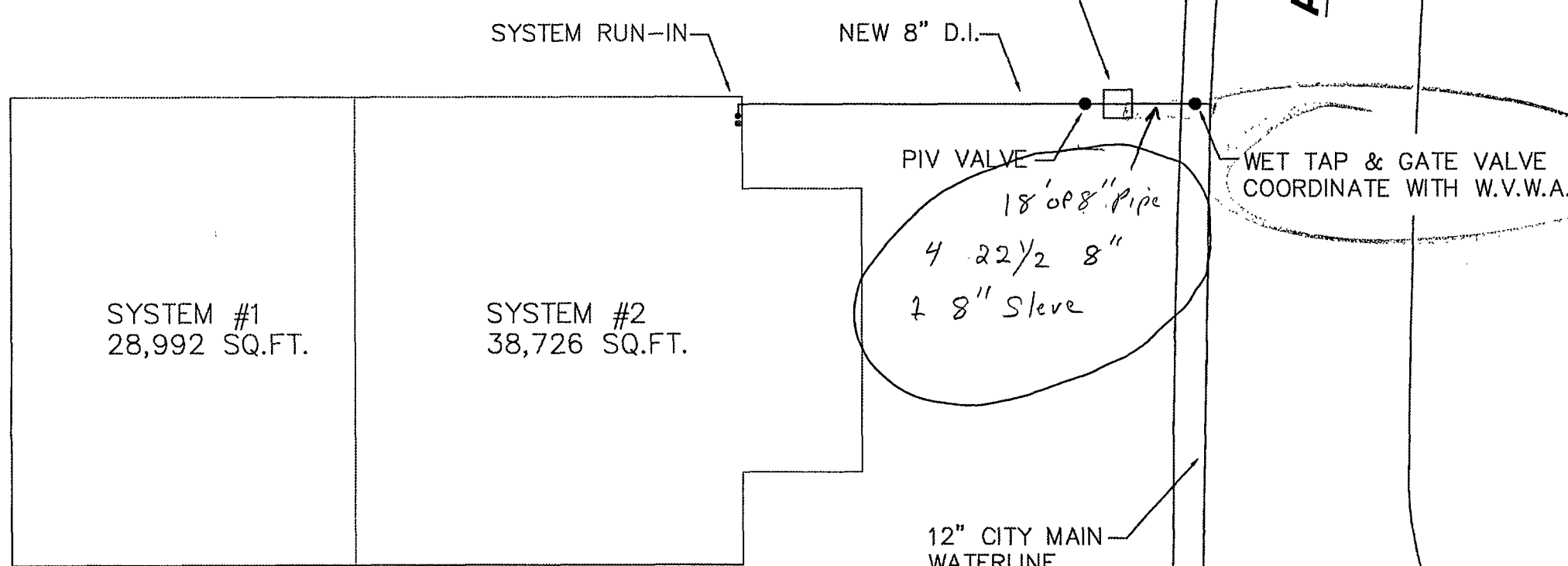
TYPICAL RUN-IN DETAIL
NOT TO SCALE

TEST HYDRANT
HYD. #12991
STATIC: 132 psi
RESIDUAL: 65 psi
TEST BY WWA 6-10-12

FLOW HYDRANT
HYD. #13000
FLOW: 1595 gpm
TEST BY WWA 6-10-12
APPROX. 1,100 FT. DOWNSTREAM

AERIAL WAY DRIVE

As-Built 4/1/13 Simon Barron

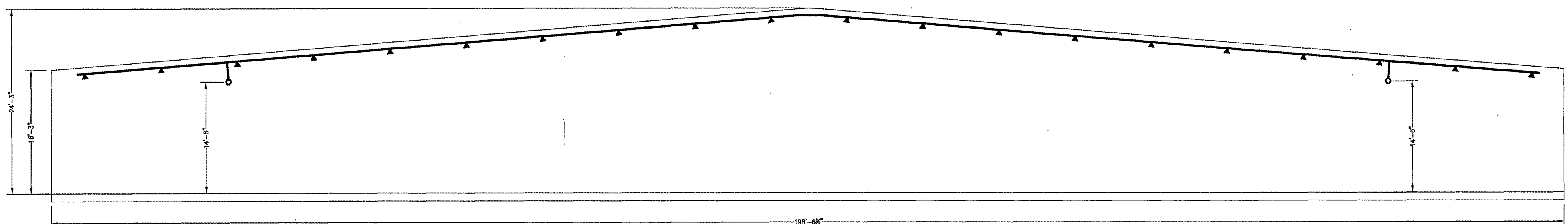


WATER INFORMATION
Static: 132 psi
Residual: 65 psi
Flow: 1595 gpm
Fire Hydrant Test by WWA
Date: 6-10-12

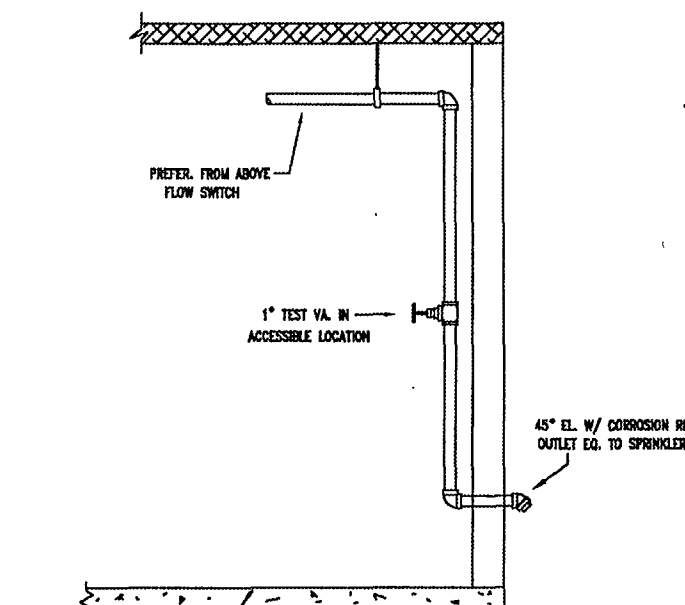
3631 AERIAL WAY DRIVE

PETERS CREEK RD.

SITE PLAN
SCALE: 1"=50'-0"

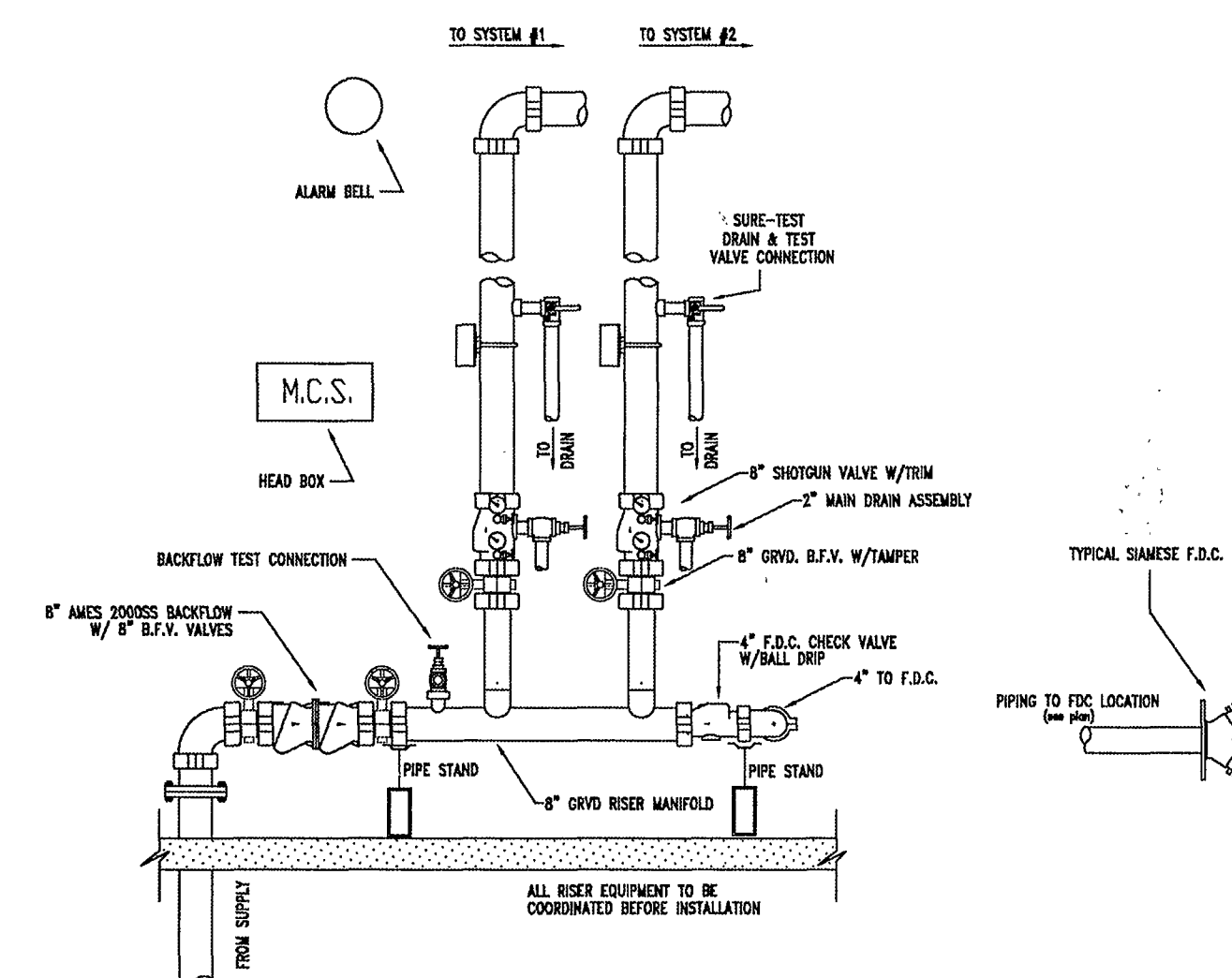


BUILDING SECTION
SCALE: 1/8" = 1'-0"



WET PIPE SYSTEM TEST CONNECTION
COORDINATE LOCATION IN FIELD W/
OWNER AND OTHER TRADES.

- FIRE PROTECTION GENERAL NOTES**
- PLANS CONFORM TO LATEST EDITION OF NFPA-13 & LOCAL JURISDICTION REQUIREMENTS.
 - ALL THREADED PIPE 2" & SMALLER IS SCH. 40. ALL SDR PIPE 1 1/2" & LARGER IS SCH. 10. ALL PIPE TO OUTSIDE IS GALVANIZED.
 - ALL FITTINGS PER NFPA 13 TO BE GROOVED FITTINGS AND COUPLERS FOR SCH. 10 MAIN PIPE AND GROOVED OR CAST ON MALLEABLE IRON SCHEDULE FITTINGS FOR BRANCHLINE PIPE.
 - FOR BUILDING OCCUPANCY, ALL SPRINKLERS SHALL HAVE THEIR DEFLECTORS INSTALLED BELOW ROOF AND/OR CEILING ASSEMBLIES BETWEEN 1" TO 2" MAXIMUM DEFLECTOR ON THE TYPE OF ROOF AND/OR CEILING CONSTRUCTION CLASSIFICATION.
 - OTHERS ARE RESPONSIBLE FOR MAINTAINING BUILDING TEMPERATURE AT ABOVE FREEZING.
 - THE UNSUPPORTED LENGTH BETWEEN THE END SPRINKLER AND THE LAST HANGER SHALL NOT BE MORE THAN 36" FOR 1" PIPE, OR 48" FOR 1 1/2" PIPE.
 - ALL ARMEDERS GREATER THAN 24" SHALL BE SUPPORTED BY A HANGER.
 - 1" TO 4" PIPE TO BE SUPPORTED WITH 3/8" ALL THREAD ROD AND 3/8" HANGER ASSEMBLIES. 4" TO 6" PIPE TO BE SUPPORTED WITH 1/2" ALL THREAD ROD AND 1/2" HANGER ASSEMBLIES.
 - CONTROL VALVES TO BE PROVIDED WITH TAMPER SWITCHES INSTALLED BY M.C.S. & CONNECTED TO FIRE DEPARTMENT REMOTE STATION WIRING BY OTHERS.
 - FIRE DEPARTMENT CONNECTION TO HAVE NATIONAL STANDARD THREADED BRAND TO READ AUTO SPRINKLER FIRE DEPARTMENT CONNECTION TO BE A MINIMUM OF 18" AND A MAXIMUM OF 48" ABOVE GROUND.
 - IF HORIZONTAL OVERHEAD DOORS ARE PROVIDED SPRINKLER PROTECTION SHALL BE PROVIDED BOTH ABOVE AND BELOW THE DOORS (UNLESS NOTED OTHERWISE).
 - BEFORE ANY SPRINKLER PIPING IS CONCEALED THE SPRINKLER CONTRACTOR SHALL NOTIFY THE FIRE DEPARTMENT 48 HOURS IN ADVANCE, SO THAT THE FIRE DEPARTMENT CAN INSPECT THE SYSTEMS PIPING FOR CONFORMANCE WITH CODE REQUIREMENTS.
 - HYDROSTATICALLY TEST ALL NEW SPRINKLER PIPING AT 200PSI FOR 2 HOURS, NOTIFY THE LOCAL FIRE PREVENTION BUREAU/ INSPECTION 48 HOURS PRIOR TO TEST.



RISER DETAIL
NOT TO SCALE

JOB NORTH		SPRINKLER HEAD LEGEND										GENERAL NOTES										TYPICAL HANGER DETAILS		NICET LEVEL III		SYMBOL LEGEND										REVISIONS				<div>Magic City Sprinkler, Inc</div> <div>1601 GRANDY STREET N.E. ROANOKE, VIRGINIA 24012 (840)345-9818</div> <div>MEYER DECORATIVE SURFACES</div> <div>3631 AERIAL WAY DRIVE</div> <div>ROANOKE, VA.</div> <div>SITE PLAN/DETAILS</div> <div>Drawn by: D.W.H. Permit # Insp. Tol #</div> <div>Checked by: RM File: MEYER Job no. 6580-13</div> <div>Scale: 1/8"=1'-0" UNO Date: 1-29-13 Sheet 1</div>	