

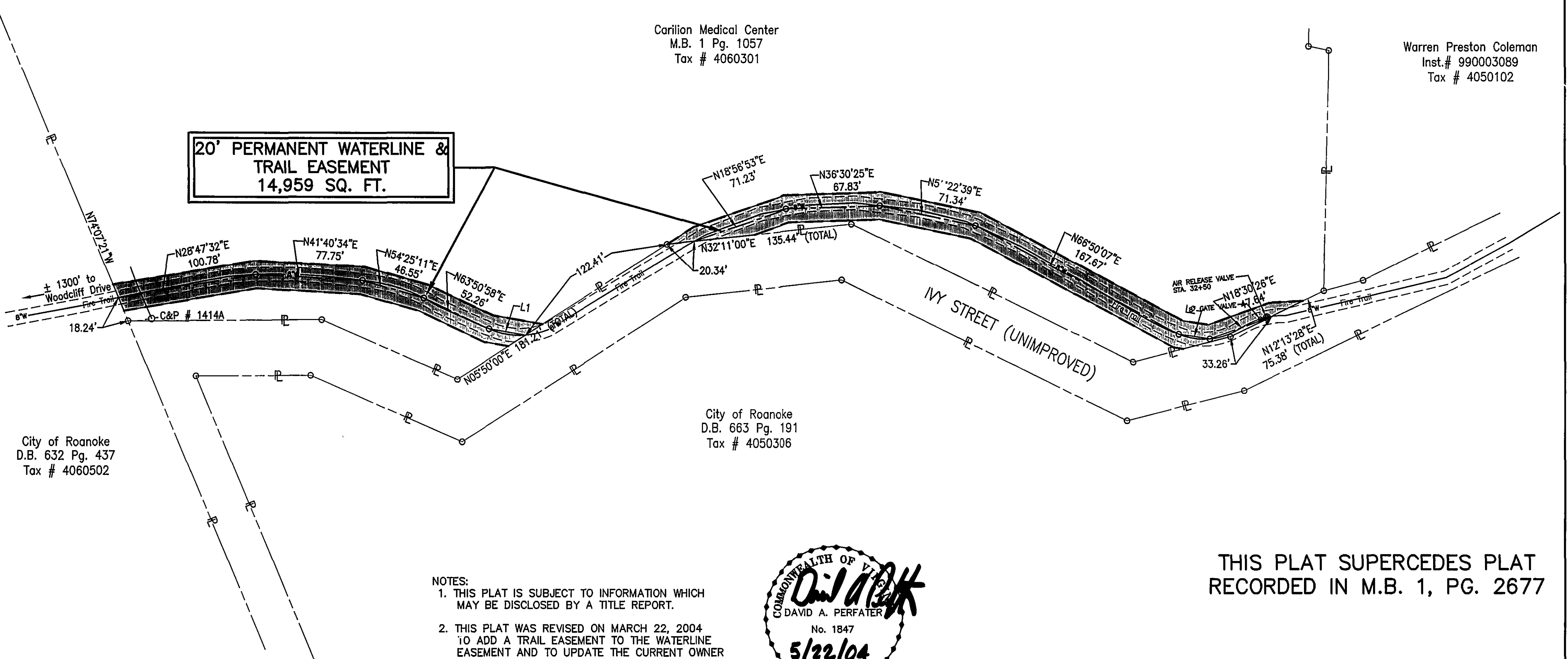
Meridian of Va. State Plane  
Coordinate  
NAD 83



Carilion Medical Center  
M.B. 1 Pg. 1057  
Tax # 4060301

Warren Preston Coleman  
Inst. # 990003089  
Tax # 4050102

**20' PERMANENT WATERLINE &  
TRAIL EASEMENT  
14,959 SQ. FT.**



City of Roanoke  
D.B. 632 Pg. 437  
Tax # 4060502

City of Roanoke  
D.B. 663 Pg. 191  
Tax # 4050306

## NOTES:

1. THIS PLAT IS SUBJECT TO INFORMATION WHICH MAY BE DISCLOSED BY A TITLE REPORT.
2. THIS PLAT WAS REVISED ON MARCH 22, 2004 TO ADD A TRAIL EASEMENT TO THE WATERLINE EASEMENT AND TO UPDATE THE CURRENT OWNER NAME FROM ROANOKE MEMORIAL HOSPITALS TO CARILION MEDICAL CENTER.



**THIS PLAT SUPERCEDES PLAT  
RECORDED IN M.B. 1, PG. 2677**

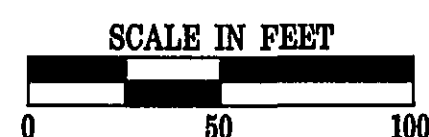
SHADED AREA DENOTES PERMANENT WATERLINE & TRAIL EASEMENT

PERMANENT WATERLINE & TRAIL EASEMENT  
AREA - 14,959 SQ. FT. (0.343 AC.)

IN THE CLERK'S OFFICE OF THE CIRCUIT COURT FOR THE  
CITY OF ROANOKE, VIRGINIA THIS MAP WAS PRESENTED ON  
THIS 9 DAY OF Aug., 2003 AND WITH CERTIFICATE  
OF ACKNOWLEDGEMENT THERE TO ANNEXED  
ADMITTED TO RECORD 10:46 O'CLOCK A.M.

Test: Brenda S Hamilton Clerk  
By: Patty Taylor D.C.

LINE TABLE		
LINE	LENGTH	BEARING
L1	26.95	N48°15'07"E
L2	22.87	N46°58'02"E



**Mattern & Craig**  
CONSULTING ENGINEERS • SURVEYORS

701 FIRST STREET, S.W.  
ROANOKE, VIRGINIA 24016  
(540) 345-9342  
FAX (540) 345-7691

PERMANENT WATERLINE & TRAIL EASEMENT  
BEING GRANTED TO  
**CITY OF ROANOKE**  
BY  
**CARILION MEDICAL CENTER**  
CITY OF ROANOKE, VIRGINIA

SCALE: 1" = 50'

DATE: AUGUST 21, 2003

TAX PARCEL NO. 4060301

REV:  
MARCH 22, 2004