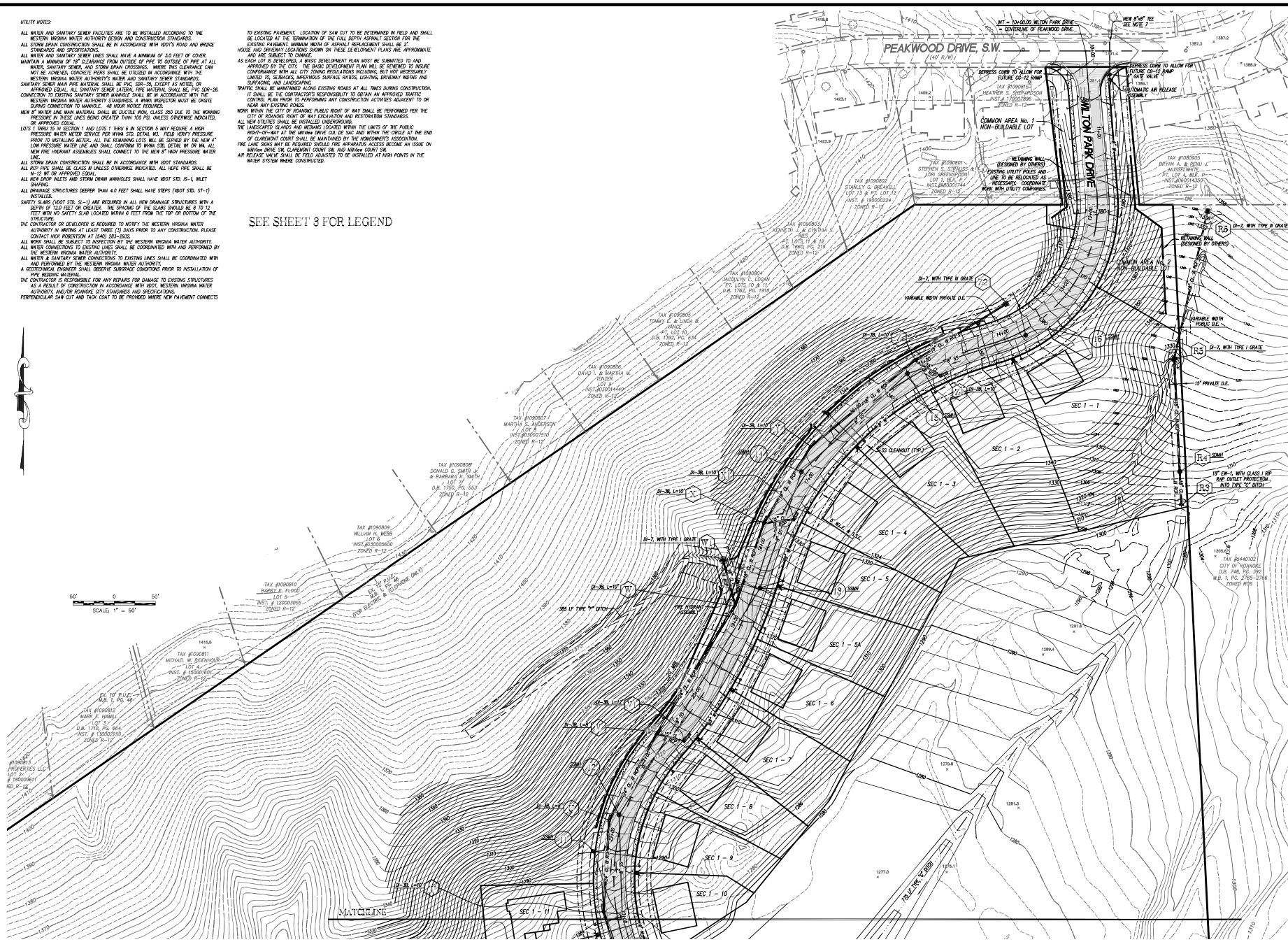
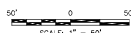




\\crawlings\2003\033\en\eng\2019 plan update\eng\as approved plan\033\7\comp\2019 eng

[illegible][illegible]

SEE SHEET 3 FOR LEGEND



<b>DEVELOPMENT PLANS FOR</b> <b>MILVIEW SUBDIVISION</b> PREPARED FOR <b>WTSH, LLC</b> SITUATED IN <b>THE CITY OF ROANOKE, VIRGINIA</b>		<b>CONSTRUCTION PHASE 1</b> <b>GRADING</b> <b>PLAN</b>	
<b>PLANS</b>		 <b>Lumsden Associates, P.C.</b> ENGINEERS   SURVEYORS   PLANNERS	
DATE <b>March 10, 2020</b>		PHONE (540) 724-4411 FAX (540) 724-4412 WWW.LUMSDENPC.COM POC@LUMSDENPC.COM	
SCALE <b>1" = 50'</b>		 COMMONWEALTH OF VIRGINIA JAMES P. LUMSDEN LICENSED PROFESSIONAL ENGINEER No. 54164 PROFESSIONAL SEAL	
SHEET NO. OF <b>2003-374N</b>		SHEET NO. OF <b>2003-374N</b>	