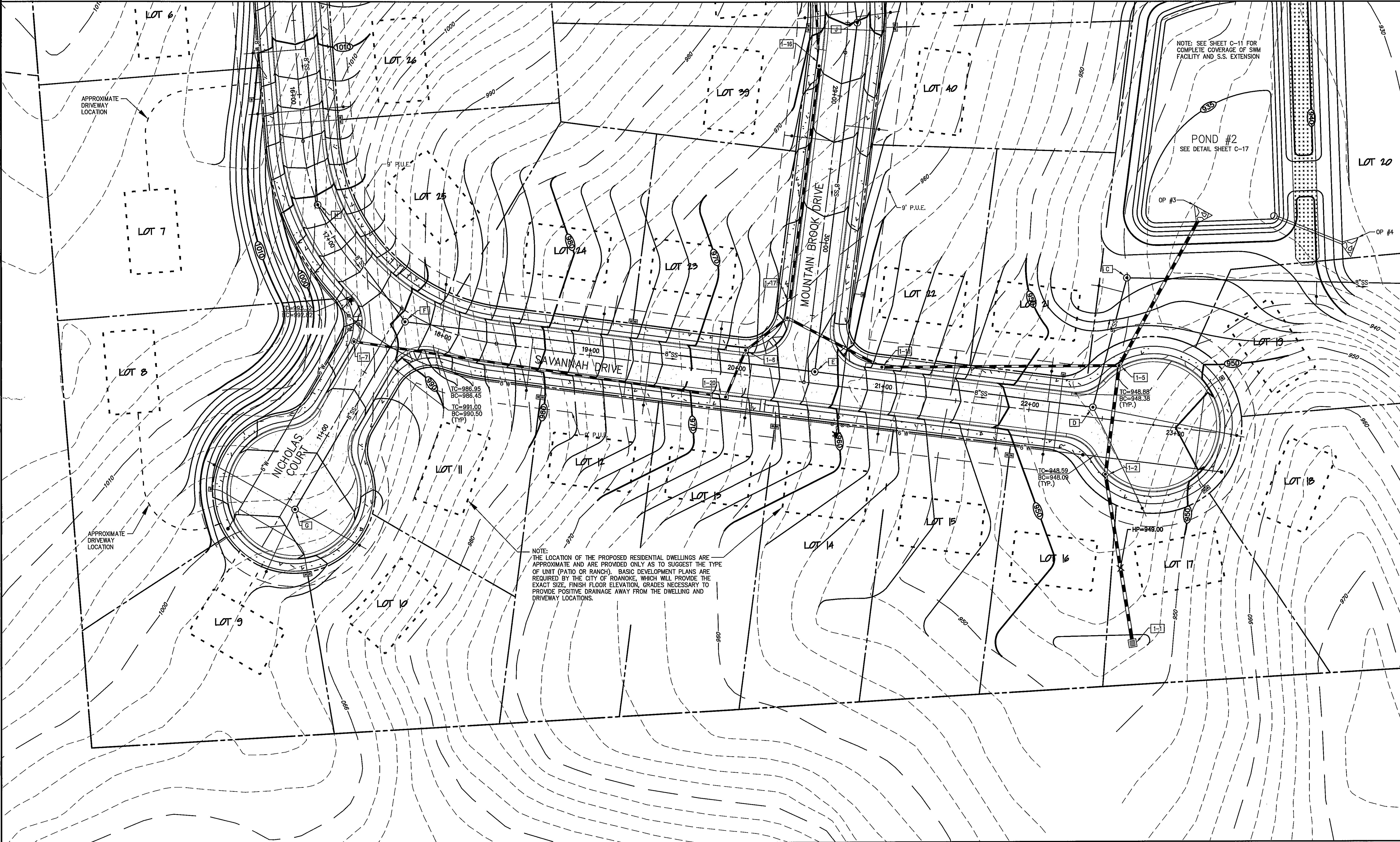
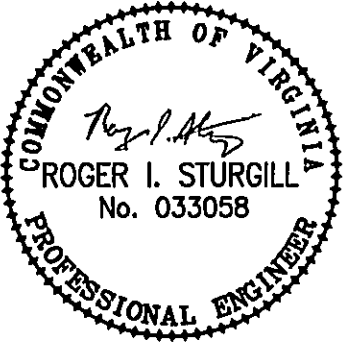
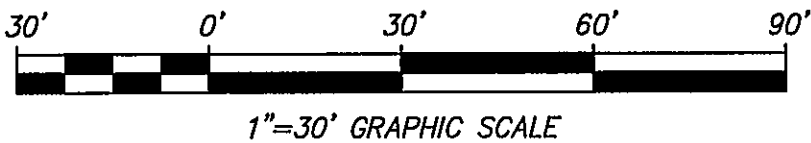


MATCHLINE, SEE SHEET C-8



- NOTES:
1. ALL PROPOSED ROADS TO BE PUBLIC.
 2. ALL SANITARY SEWER EASEMENTS TO BE PUBLIC.
 3. ALL SANITARY SEWER LINE TO BE SDR-35 PIPE.
 4. ALL SANITARY SEWER MANHOLES SHALL HAVE STANDARD FRAMES AND COVERS UNLESS OTHERWISE NOTED.
 5. ALL WATERLINE EASEMENTS TO BE PUBLIC.
 6. ALL WATERLINE TO BE DUCTILE IRON PIPE.
 7. INDIVIDUAL PRESSURE REDUCING VALVES TO BE INSTALLED IN ALL WATER METERS IN ACCORDANCE WITH WWA STD. DETAIL W-02. ALL WATER METERS TO BE 5/8" DIAMETER.
 8. ALL STORM SEWER EASEMENTS TO BE PUBLIC.
 9. ALL STORM SEWER PIPE TO BE CLASS III RCP UNLESS OTHERWISE NOTED.
 10. ALL STORMWATER MANAGEMENT EASEMENTS TO BE PRIVATE AND TO BE MAINTAINED BY THE HOMEOWNER'S ASSOCIATION.
 11. TRASH REMOVAL AND RECYCLING TO BE HANDLED BY CITY OF ROANOKE CURBSIDE PICKUP.

- NOTES:
1. PLEASE REFER TO SHEET C-11 FOR SEWER LINE EXTENSION.
 2. PLEASE REFER TO SHEET C-11 FOR SWM NOTES AND DETAILS.



BALZER
AND ASSOCIATES, INC.
PLANNERS • ARCHITECTS
ENGINEERS • SURVEYORS

1208 Corporate Circle
Roanoke, Virginia 24018
Phone: 540/772-9580
FAX: 540/772-8050

501 Branchway Road
Richmond, Virginia 23238
Phone: 804/784-0571
FAX: 804/784-2935

880 Technology Park Drive
Suite 200
Glen Allen, Virginia 23059
Phone: 804/653-0132
FAX: 804/653-0133

448 Peppers Ferry Road
Christiansburg, Virginia 24073
Phone: 540/381-4290
FAX: 540/381-4291

1557 Commerce Road
Suite 201
Verona, Virginia 24482
Phone: 540/248-3220
FAX: 540/248-3221

MOUNTAIN BROOK
SUBDIVISION
GRADING PLAN
ROANOKE CITY, VIRGINIA

DRAWN BY: CPB
DESIGNED BY: CPB
CHECKED BY: JVJ
DATE: 06/12/2006

REVISIONS:
08/31/06 PER CITY OF
ROANOKE 1ST REVIEW
10/03/06 PER CITY OF
ROANOKE 2ND REVIEW
10/17/06 PER CITY OF
ROANOKE 3RD REVIEW
01/19/07 PER CITY OF
ROANOKE 4TH REVIEW
03/28/07 PER STORM
DRAIN REVISION

SCALE: 1"=30'

SHEET NO.

C-9

JOB NO.
R0500378.01