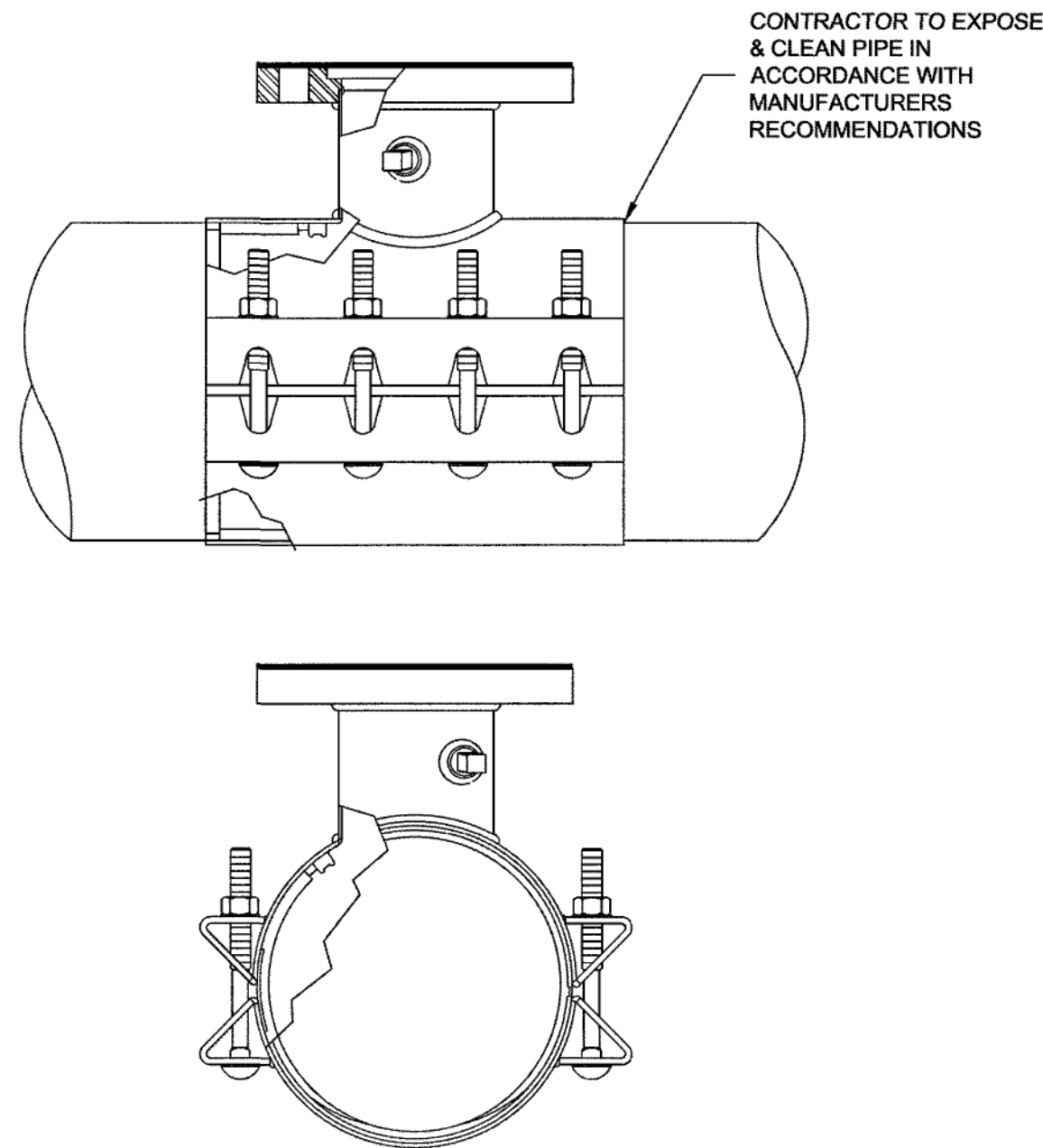


1. TAPPING SLEEVE SHALL BE POWERSEAL MODEL 3490 TYPE 304 STAINLESS STEEL WITH CARBON STEEL FLANGE, ROMAC'S MODEL SST III, FORD MODEL FTSS WITH CARBON STEEL FLANGE OR APPROVED EQUIVALENT. SLEEVE SHALL BE RATED AT 100 PSI OVER WORKING PRESSURE AND MUST HAVE A TEST PLUG.
2. TAPPING VALVE SHALL BE AVK RESILIENT SEATED GATE VALVE SERIES 25 MJFL, MUELLER T-2360 RESILIENT WEDGE TAPPING VALVE WITH MJFL, OR AFC SERIES 2500 RESILIENT WEDGE TAPPING VALVE WITH MJFL. VALVE SHALL BE RATED AT 250 PSI.
3. TAPPING SLEEVE AND VALVE SHALL BE FULL PORT TO ACCEPT FULL SIZE SHELL CUTTER.
4. STEEL FLANGE SHALL MEET AWWA C207.
5. SIZE-ON-SIZE TAPPING NOT ALLOWED UNLESS APPROVED BY PARTICIPATING UTILITY.



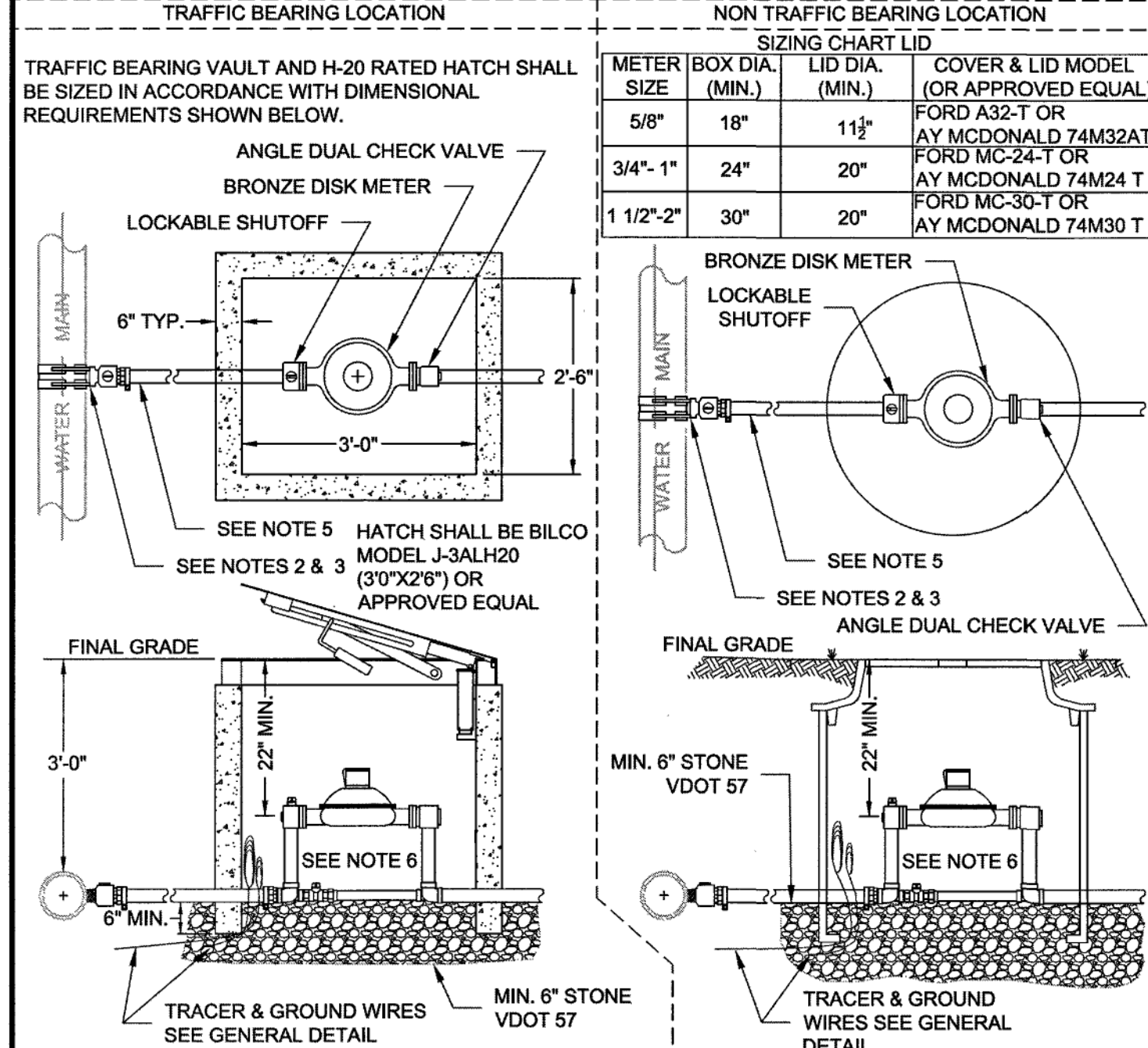
WESTERN VIRGINIA REGIONAL - CONSTRUCTION DETAIL

TAPPING SLEEVE
AND VALVE

W-21

01/01/14

1. ALL METERS ARE TO BE PROVIDED AND INSTALLED BY PARTICIPATING UTILITY AT OWNER/DEVELOPER'S EXPENSE. METER BOX, SERVICE, AND SETTER TO BE FURNISHED AND INSTALLED BY OWNER/DEVELOPER IN ACCORDANCE WITH THE MINIMUM REQUIREMENTS SHOWN BELOW.
2. SADDLES MUST BE USED WITH ALL PLASTIC & DUCTILE IRON PIPE. SERVICE SADDLES SHALL BE USED IN ACCORDANCE WITH WATER DISTRIBUTION PIPING SPECIFICATION. SERVICE SADDLES FOR PLASTIC PIPE SHALL BE: POWERSEAL 3417, OR 3412AS, ROMAC 202S, OR 306, OR FORD METER FS202 OR FS303. FOR DUCTILE IRON PIPE USE THE ABOVE, OR POWERSEAL 3413, ROMAC 202 OR FORD METER F202.
3. CORPORATION STOP SHALL BE FORD FB1000-4-G-NL, MUELLER B-25008 OR APPROVED EQUAL.
4. METER BOXES LOCATED IN AREAS SUBJECT TO VEHICULAR TRAFFIC SHALL BE CONCRETE WITH H-20 RATED TRAFFIC BEARING HATCH. ALL OTHER METER BOXES SHALL BE CARSON/MID-STATES PLASTICS, INC. PLASTIC BOX, ADS CORRUGATED HOPE BOX, OR APPROVED EQUAL. MINIMUM METER BOX & LID DIAMETERS SHALL BE IN ACCORDANCE WITH SIZING CHART BELOW.
5. SERVICE SHALL BE "K" TYPE COPPER OR P.E. 4710, CTS O.D., MINIMUM CELL CLASS 445474E AND 445474D.
6. COPPER METER SETTER TO BE FORD, A.Y. McDONALD OR APPROVED EQUAL WITH ANGLE DUAL CHECK VALVE AND BYPASS HAVING LOCKABLE SHUTOFF VALVE.
7. SERVICES REQUIRING METERS LARGER THAN 2-INCH SHALL BE REVIEWED BY THE PARTICIPATING UTILITY ON A CASE BY CASE BASIS.

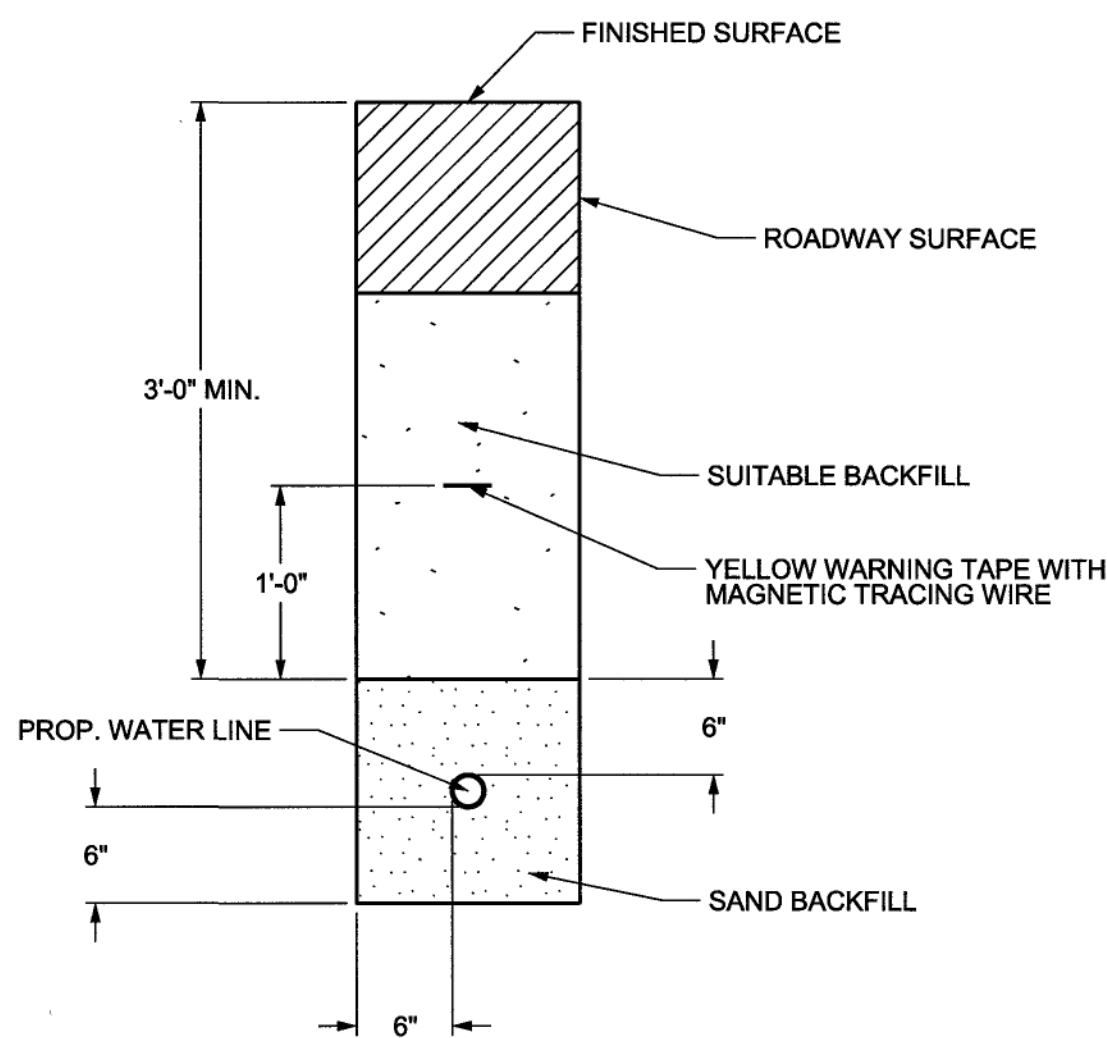


WESTERN VIRGINIA REGIONAL - CONSTRUCTION DETAIL

COMMERCIAL
WATER SERVICE
METER SIZES 5/8" - 2"

W-5

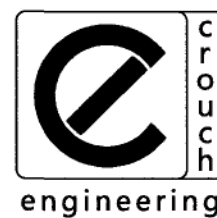
02/10/15



WATER LINE TRENCH DETAIL
NTS

WLT
FDW-02

PROJECT NO. 13016
DATE:
DRAWN BY: EVU
CHECKED BY: HAC
REVISIONS:



CROUCH ENGINEERING®
428 WILSON PIKE CIRCLE
BRENTWOOD, TN 37027
PHONE NO. (615) 791-0630

Copyright Crouch Engineering, All Rights Reserved.
REPRODUCTION AND DISTRIBUTION ONLY UNDER PERMISSION AND LICENSE BY CROUCH ENGINEERING.
FOR PERMISSION, CONTACT MARNEY A. CROUCH.

SCALE: NTS

DO NOT SCALE THIS DRAWING FOR DIMENSIONS NOT GIVEN



POCAHONTAS
OPERATING DIVISION

OFFICE OF THE CHIEF ENGINEER - DESIGN AND CONSTRUCTION - ATLANTA, GA.

REV	BY	DATE	DESCRIPTION
1	EVU	01/01/14	WLT
2	EVU	02/10/15	FDW-02
3	EVU	02/10/15	WLT
4	EVU	02/10/15	FDW-02
5	EVU	02/10/15	WLT
6	EVU	02/10/15	FDW-02
7	EVU	02/10/15	WLT
8	EVU	02/10/15	FDW-02
9	EVU	02/10/15	WLT
10	EVU	02/10/15	FDW-02
11	EVU	02/10/15	WLT
12	EVU	02/10/15	FDW-02
13	EVU	02/10/15	WLT
14	EVU	02/10/15	FDW-02
15	EVU	02/10/15	WLT
16	EVU	02/10/15	FDW-02
17	EVU	02/10/15	WLT
18	EVU	02/10/15	FDW-02
19	EVU	02/10/15	WLT
20	EVU	02/10/15	FDW-02
21	EVU	02/10/15	WLT
22	EVU	02/10/15	FDW-02
23	EVU	02/10/15	WLT
24	EVU	02/10/15	FDW-02
25	EVU	02/10/15	WLT
26	EVU	02/10/15	FDW-02
27	EVU	02/10/15	WLT
28	EVU	02/10/15	FDW-02
29	EVU	02/10/15	WLT
30	EVU	02/10/15	FDW-02
31	EVU	02/10/15	WLT
32	EVU	02/10/15	FDW-02
33	EVU	02/10/15	WLT
34	EVU	02/10/15	FDW-02
35	EVU	02/10/15	WLT
36	EVU	02/10/15	FDW-02
37	EVU	02/10/15	WLT
38	EVU	02/10/15	FDW-02
39	EVU	02/10/15	WLT
40	EVU	02/10/15	FDW-02
41	EVU	02/10/15	WLT
42	EVU	02/10/15	FDW-02
43	EVU	02/10/15	WLT
44	EVU	02/10/15	FDW-02
45	EVU	02/10/15	WLT
46	EVU	02/10/15	FDW-02
47	EVU	02/10/15	WLT
48	EVU	02/10/15	FDW-02
49	EVU	02/10/15	WLT
50	EVU	02/10/15	FDW-02
51	EVU	02/10/15	WLT
52	EVU	02/10/15	FDW-02
53	EVU	02/10/15	WLT
54	EVU	02/10/15	FDW-02
55	EVU	02/10/15	WLT
56	EVU	02/10/15	FDW-02
57	EVU	02/10/15	WLT
58	EVU	02/10/15	FDW-02
59	EVU	02/10/15	WLT
60	EVU	02/10/15	FDW-02
61	EVU	02/10/15	WLT
62	EVU	02/10/15	FDW-02
63	EVU	02/10/15	WLT
64	EVU	02/10/15	FDW-02
65	EVU	02/10/15	WLT
66	EVU	02/10/15	FDW-02
67	EVU	02/10/15	WLT
68	EVU	02/10/15	FDW-02
69	EVU	02/10/15	WLT
70	EVU	02/10/15	FDW-02
71	EVU	02/10/15	WLT
72	EVU	02/10/15	FDW-02
73	EVU	02/10/15	WLT
74	EVU	02/10/15	FDW-02
75	EVU	02/10/15	WLT
76	EVU	02/10/15	FDW-02
77	EVU	02/10/15	WLT
78	EVU	02/10/15	FDW-02
79	EVU	02/10/15	WLT
80	EVU	02/10/15	FDW-02
81	EVU	02/10/15	WLT
82	EVU	02/10/15	FDW-02
83	EVU	02/10/15	WLT
84	EVU	02/10/15	FDW-02
85	EVU	02/10/15	WLT
86	EVU	02/10/15	FDW-02
87	EVU	02/10/15	WLT
88	EVU	02/10/15	FDW-02
89	EVU	02/10/15	WLT
90	EVU	02/10/15	FDW-02
91	EVU	02/10/15	WLT
92	EVU	02/10/15	FDW-02
93	EVU	02/10/15	WLT
94	EVU	02/10/15	FDW-02
95	EVU	02/10/15	WLT
96	EVU	02/10/15	FDW-02
97	EVU	02/10/15	WLT
98	EVU	02/10/15	FDW-02
99	EVU	02/10/15	WLT
100	EVU	02/10/15	FDW-02

CADD FILE

SHEET 21 OF 46