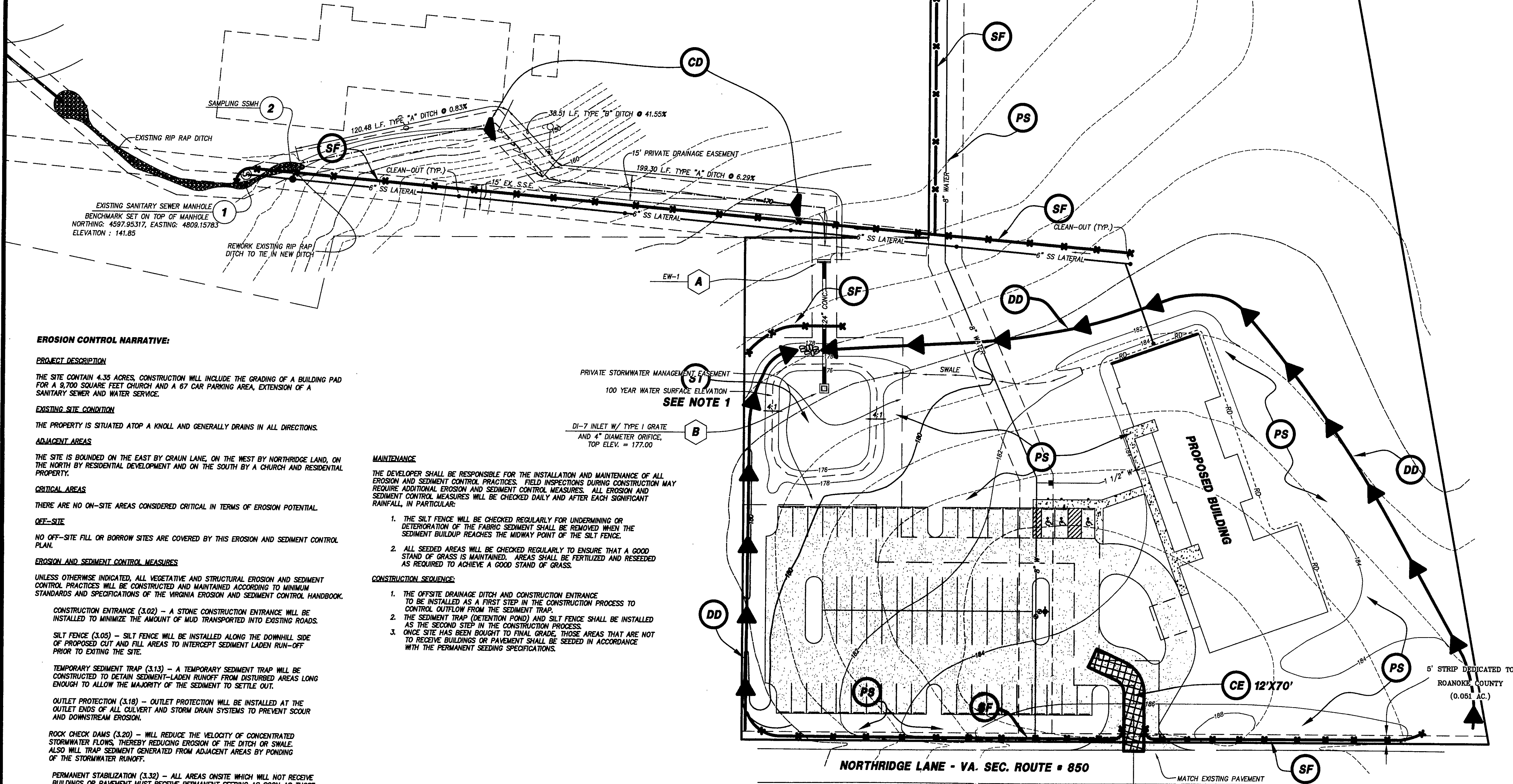


# NOTES:

1. THE 4" DIAMETER ORIFICE ON THE DI-7 INLET SHALL BE BLOCKED UNTIL THE DISTURBED AREAS HAVE BEEN STABILIZED. ONCE STABILIZED, THE BLOCKING SHALL BE REMOVED.
2. THE LOCATION OF ALL OFF-SITE FILL OR BORROW AREAS ASSOCIATED WITH THE PROJECT WILL BE PROVIDED TO ROANOKE COUNTY COMMUNITY DEVELOPMENT. AN EROSION AND SEDIMENT CONTROL PLAN OR MEASURES MAY BE REQUIRED FOR THIS AREA.



4664 BRAMBLETON AVENUE  
P.O. BOX 20669  
ROANOKE, VIRGINIA 24018  
PHONE: (540) 774-4411  
FAX: (540) 772-9445  
E-MAIL: MAIL@LUMSDENPC.COM

**EROSION & SEDIMENT CONTROL PLAN**

**NORTH VALLEY SEVENTH DAY ADVENTIST STRUCTURES DESIGN/BUILD**  
PREPARED FOR  
CATAWBA MAGISTERIAL DISTRICT  
ROANOKE COUNTY, VIRGINIA

NO.	DATE	REVISIONS DESCRIPTION
1		
2		
3		
4		
5		

DATE: JUNE 1, 2004

SCALE: 1" = 30'

COMMISSION NO: 03-360

CADD FILE: P:\2003\03380\END\380COMP

SHEET 9 OF 10

THIS PLAN IS FOR EROSION AND SEDIMENT CONTROL PURPOSES ONLY.