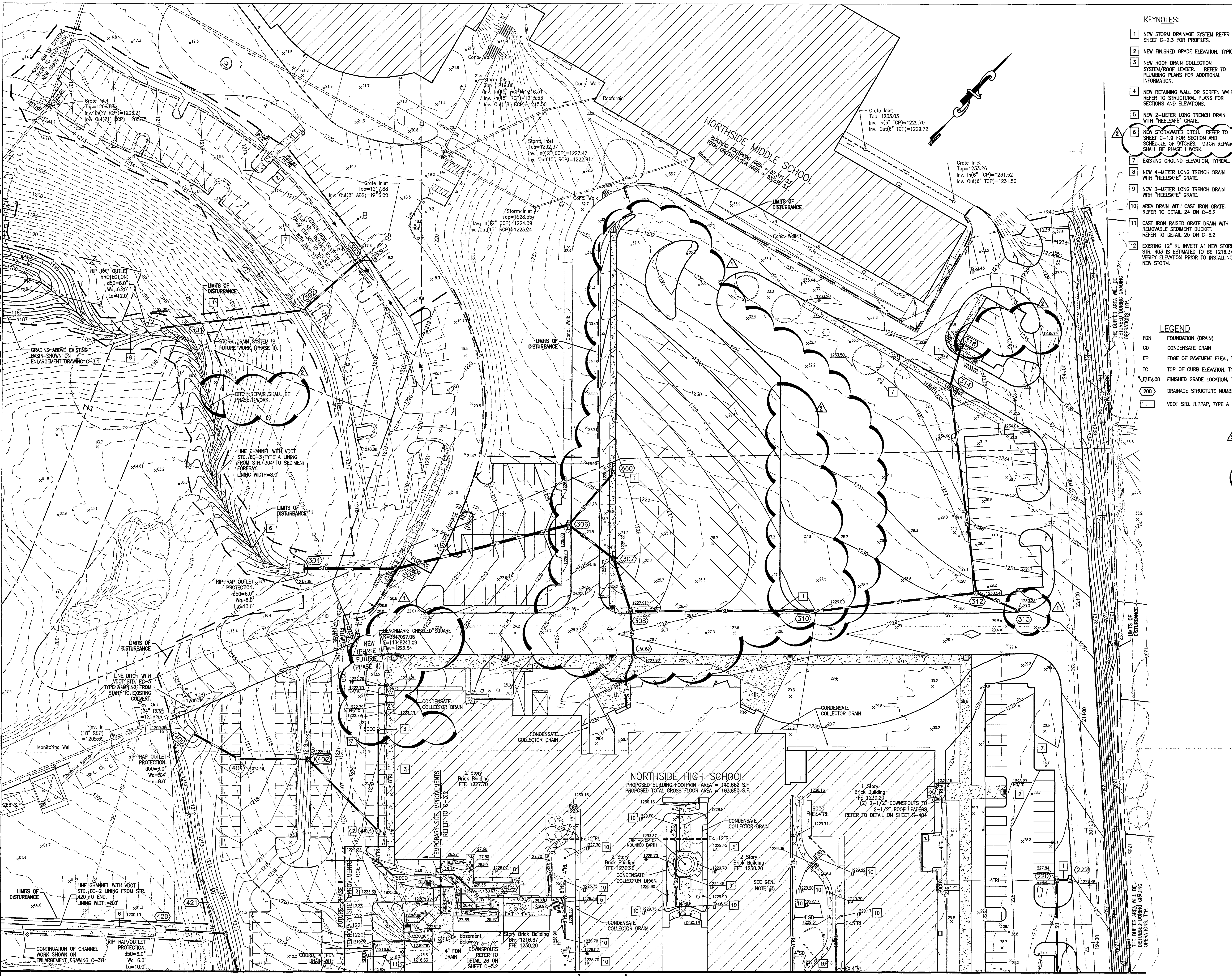


SEE ENLARGEMENT ON C-3.1

J:\06055\DWG\06055\Grading.dwg, Plotted: Aug 08, 2007, 9:22am



KEYNOTES:

- 1 NEW STORM DRAINAGE SYSTEM REFER TO SHEET C-2.3 FOR PROFILES.
- 2 NEW FINISHED GRADE ELEVATION, TYPICAL.
- 3 NEW ROOF DRAIN COLLECTION SYSTEM/ROOF LEADER. REFER TO PLUMBING PLANS FOR ADDITIONAL INFORMATION.
- 4 NEW RETAINING WALL OR SCREEN WALL. REFER TO STRUCTURAL PLANS FOR SECTIONS AND ELEVATIONS.
- 5 NEW 2-METER LONG TRENCH DRAIN WITH "HEELSAFE" GRATE.
- 6 NEW STORMWATER DITCH. REFER TO SHEET C-1.9 FOR SECTION AND SCHEDULE OF DITCHES. DITCH REPAIR SHALL BE PHASE I WORK.
- 7 EXISTING GRADE ELEVATION, TYPICAL.
- 8 NEW 4-METER LONG TRENCH DRAIN WITH "HEELSAFE" GRATE.
- 9 NEW 3-METER LONG TRENCH DRAIN WITH "HEELSAFE" GRATE.
- 10 AREA DRAIN WITH CAST IRON GRATE. REFER TO DETAIL 24 ON C-5.2.
- 11 CAST IRON RAISED GRATE DRAIN WITH REMOVABLE SEDIMENT BUCKET. REFER TO DETAIL 25 ON C-5.2.
- 12 EXISTING 12" RI INVERT AT NEW STORM STR. 403 IS ESTIMATED TO BE 1216.34, VERIFY ELEVATION PRIOR TO INSTALLING NEW STORM.

LEGEND

- FDN FOUNDATION (DRAIN)
CD CONDENSATE DRAIN
EP EDGE OF PAVEMENT ELEV., TYP
TC TOP OF CURB ELEVATION, TYP
ELEV.00 FINISHED GRADE LOCATION, TYP
200 DRAINAGE STRUCTURE NUMBER
VDOT STD. RIPRAP, TYPE A

KEY PLAN

AREA "C" AREA "B"

AREA "D" AREA "A"

GENERAL NOTES

1. LENGTH OF STORM DRAIN PIPE IS HORIZONTAL DISTANCE FROM CENTER OF STRUCTURE TO CENTER OF STRUCTURE.
2. "SPILL" GUTTER WHERE DRAINAGE PATTERN IS AWAY FROM GUTTER TO PREVENT TRAPPED OR STANDING WATER.
3. FLOODNOTE: CAPTION PROPERTY DOES NOT LIE WITHIN THE LIMITS OF A 100 YEAR FLOOD BOUNDARY AS DESIGNATED BY FEMA MAP #5116100023 F, PANEL #23 OF 90, DATED OCTOBER 15, 1995.
4. ALL CONDENSATE DRAIN COLLECTOR PIPING SHALL BE 3" PVC. SERVICE PIPING SHALL BE 1" MIN. WHERE ADJACENT TO RAIN LEADER OR STORM DRAIN, DIRECTION CONNECTION WILL BE ALLOWED. COORDINATE LOCATIONS FOR CONDENSATE DRAINS WITH MECHANICAL DRAWINGS AND PIPING LAYOUTS WITHIN COURTYARDS WITH PLUMBING PLANS.
5. CONDENSATE DRAINS ALONG WEST SIDE OF COURTYARD #3 SHALL TAP DIRECTLY TO NEW 8" RAIN LEADER.

TOTAL DISTURBED AREA = 16.50 ACRES

APPROVED

PARKING LOTS C AND G AND ASSOCIATED AREAS ARE SHOWN ON THIS PLAN AS FUTURE WORK (PHASE II). PHASE II WILL BE CONSTRUCTED AT A LATER DATE. REFER TO SHEET C-3.2 FOR TEMPORARY IMPROVEMENTS BETWEEN NEW AND FUTURE WORK.

ALL GUTTER IN PHASE I HAS BEEN REMOVED FROM THIS PROJECT. AS A RESULT, CONTOURS AND NEW SPOT SHOTS HAVE BEEN ADJUSTED AS NECESSARY.

SPECTRUM DESIGN

10 CHURCH AVE SE, PLAZA SUITE 1 ROANOKE, VIRGINIA 24011 540.342.6001
ROANOKE • MARIION

ADDITIONS AND RENOVATIONS TO

NORTHSIDE HIGH SCHOOL

ROANOKE COUNTY PUBLIC SCHOOLS
VA DOE #80-52G

SPECTRUM DESIGN PROJECT NO. 06055

COMMONWEALTH OF VIRGINIA
MICHAEL A. RAKES
No. 028993
8/4/07
PROFESSIONAL ENGINEER

DATE 15 APRIL, 2007

DESIGN ARCHITECT
PROJECT ENGINEER
CHECKED BY
DRAWN BY

REVISIONS
COUNTY REVIEW
CO. REV., VE REVISION

DATE 5/25/07
8/7/07

SHEET TITLE

GRADING AND DRAINAGE PLAN - AREA 'NORTH'

C-1.8

MATCHLINE AREA 'SOUTH' - SEE SHEET C-1.7

1" = 30'-0" 30' 20' 10' 0' 30' 60'