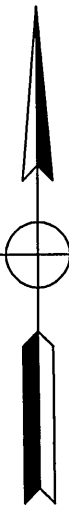


CONSULTANTS



JOB:

**OLD DOMINION AUTO SALVAGE
SITE PLAN**
CITY OF ROANOKE, VIRGINIA

CLIENT:

**W.A. STRATTON
JEFF MOTLEY**

| MARK | DATE | DESCRIPTION |
|------|----------|---------------------------|
| 6 | 2/23/12 | PER ROANOKE CITY COMMENTS |
| 5 | 1/31/12 | PER ROANOKE CITY COMMENTS |
| 4 | 12/06/11 | PER ROANOKE CITY COMMENTS |
| 3 | 08/28/11 | PER ROANOKE CITY COMMENTS |
| 2 | 08/31/11 | PER ROANOKE CITY COMMENTS |
| 1 | 07/29/11 | PER ROANOKE CITY COMMENTS |

ISSUE: FEBRUARY 14, 2011

CONTOUR INTERVAL: 2'

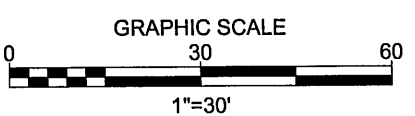
DESIGNED BY: NBW

DRAWN BY: MJD

CHECKED BY: NBW

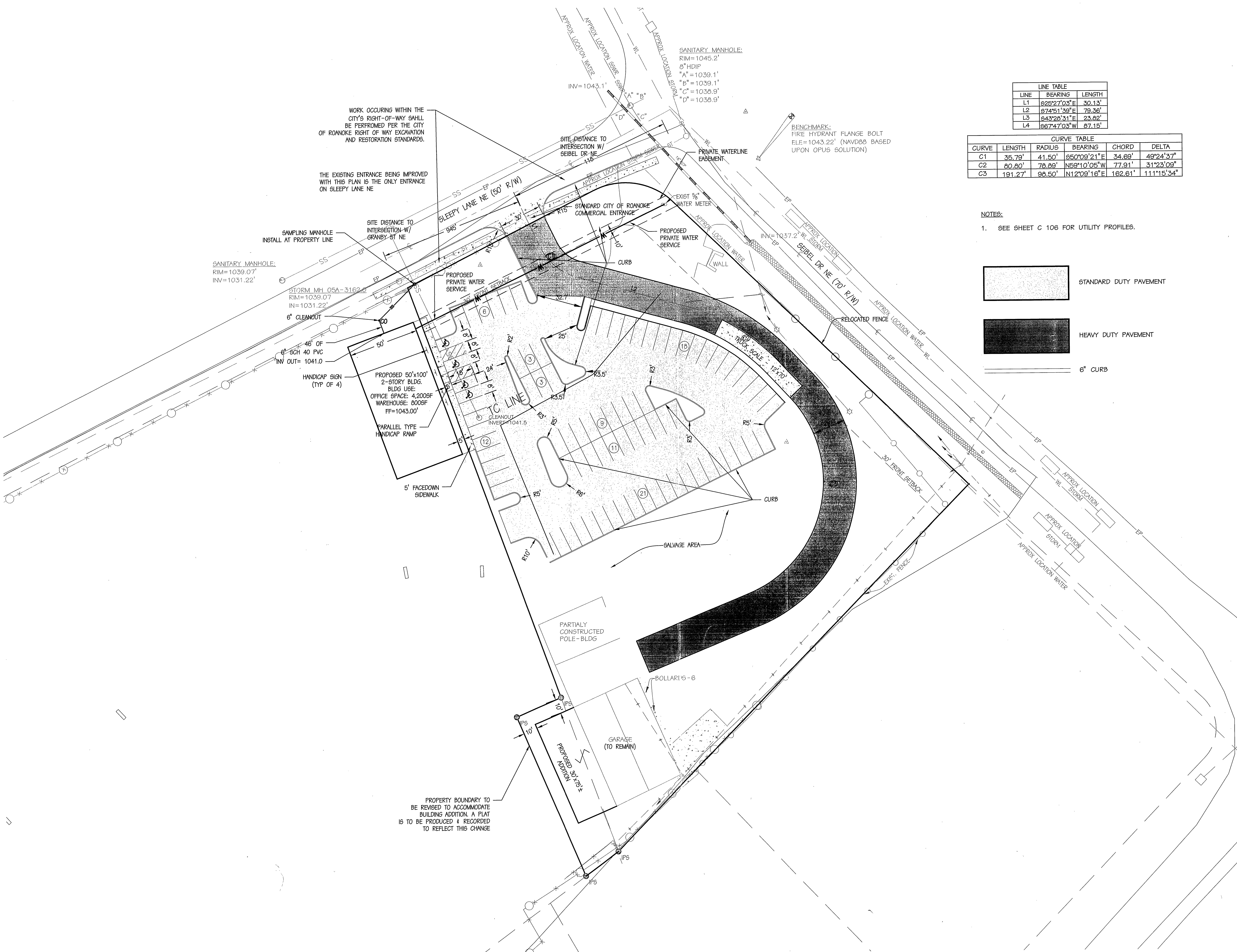
SHEET TITLE

SITE LAYOUT & DIMENSION PLAN



C-102

10397 3 of 8



| LINE | BEARING | LENGTH |
|------|-------------|--------|
| L1 | S25°27'03"E | 30.13' |
| L2 | S74°51'38"E | 79.36' |
| L3 | S43°28'31"E | 23.82' |
| L4 | S67°47'03"W | 87.15' |

| CURVE | LENGTH | RADIUS | BEARING | CHORD | DELTA |
|-------|---------|--------|-------------|---------|------------|
| C1 | 35.79' | 41.50' | S50°09'21"E | 34.69' | 49°24'37" |
| C2 | 80.80' | 78.89' | N59°10'05"W | 77.91' | 31°23'09" |
| C3 | 191.27' | 98.50' | N12°09'16"E | 182.61' | 111°15'34" |

NOTES:

1. SEE SHEET C 106 FOR UTILITY PROFILES.

