

- TRAFFIC BEARING LOCATION**

TRAFFIC BEARING VAULT AND H-20 RATED HATCH SHALL BE SIZED IN ACCORDANCE WITH DIMENSIONAL REQUIREMENTS SHOWN BELOW.

TRAFFIC BEARING VAULT AND H-20 RATED HATCH SHALL BE SIZED IN ACCORDANCE WITH DIMENSIONAL REQUIREMENTS SHOWN BELOW.

ANGLE DUAL CHECK VALVE

BRONZE DISK METER

LOCKABLE SHUTOFF

6" TYP.

2'-6"

3'-0"

SEE NOTE 5

HATCH SHALL BE BILCO MODEL J-34/H20 (30"X26") OR APPROVED EQUAL

SEE NOTES 2 & 3

FINAL GRADE

3'-0"

2'-2" MIN.

SEE NOTE 6

6" MIN.

TRACER & GROUND WIRES SEE GENERAL DETAIL

MIN. 6" STONE VDOUT 57

NON TRAFFIC BEARING LOCATION

SIZING CHART LID

METER SIZE	BOX DIA. (IN.)	LID DIA. (IN.)	COVER & LID MODEL (OR APPROVED EQUAL)
5/8"	18"	11 1/2"	FORD "A" SERIES FRAME & NICOR DOMESTIC 12.25 CX LID WITH SENSUS RECESS AND WYVIA LOGO
3/4" - 1"	24"	20"	FORD MC24 T OR AY MCDONALD 74M24 T
1 1/2" - 2"	30"	20"	FORD MC30 T OR AY MCDONALD 74M30 T

BRONZE DISK METER

LOCKABLE SHUTOFF

6" TYP.

2'-6"

3'-0"

SEE NOTE 5

HATCH SHALL BE BILCO MODEL J-34/H20 (30"X26") OR APPROVED EQUAL

SEE NOTES 2 & 3

FINAL GRADE

3'-0"

2'-2" MIN.

SEE NOTE 6

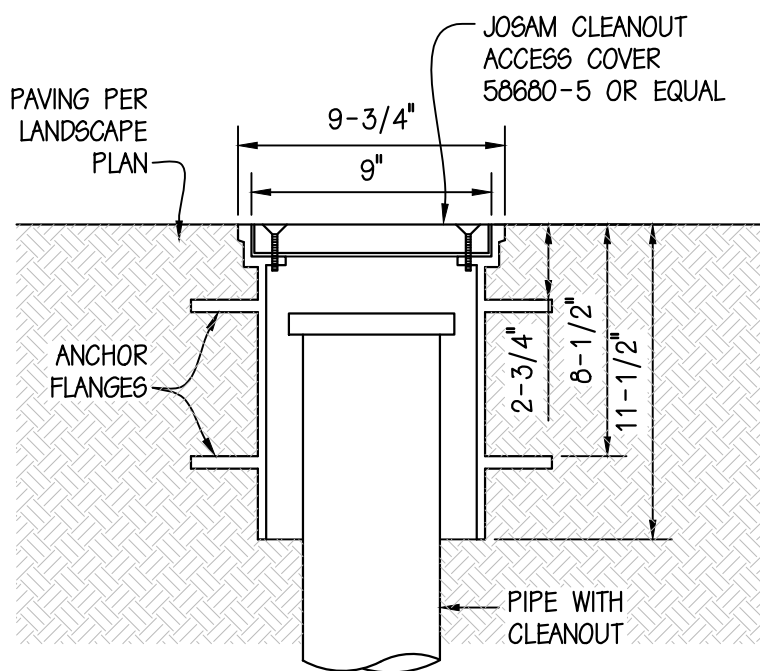
6" MIN.

TRACER & GROUND WIRES SEE GENERAL DETAIL

MIN. 6" STONE VDOUT 57

COMMERCIAL
WATER SERVICE
METER SIZES 5/8" - 2"

09/07/17



NO SCALE

NO SCALE

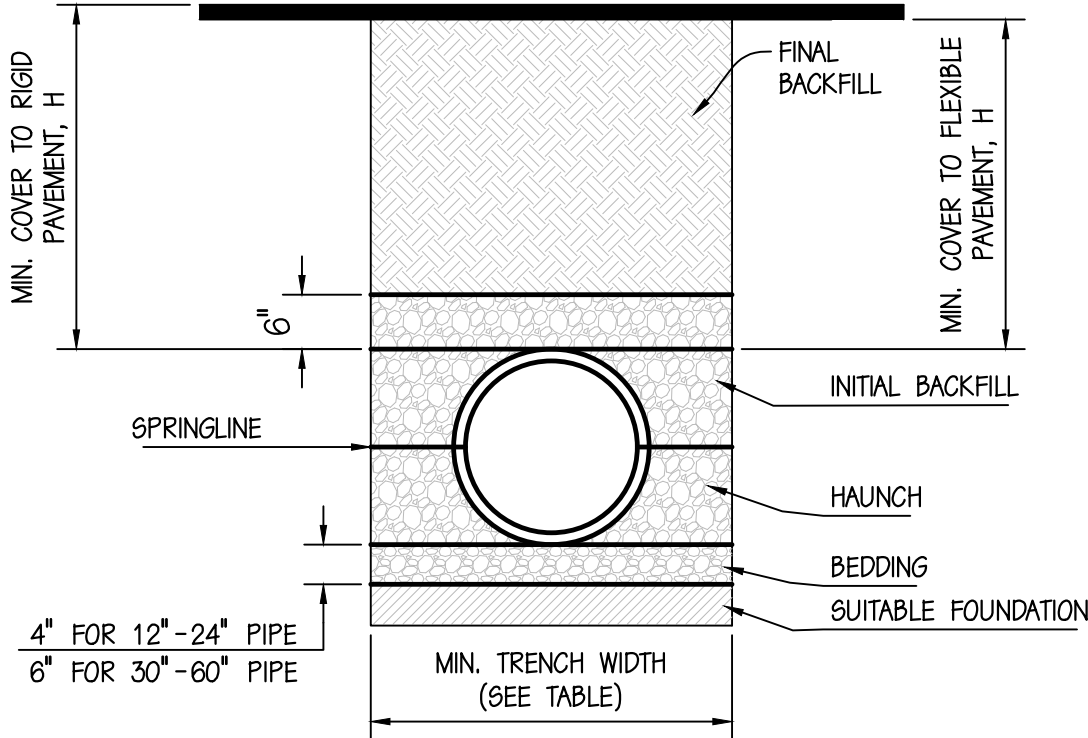
PIPE DIAM.	MIN. TRENCH WIDTH
------------	-------------------

PIPE DIAM.	MIN. TRENCH WIDTH
4"	21"
6"	23"
8"	26"
10"	28"
12"	30"
15"	34"
18"	39"
24"	48"
30"	56"
36"	64"
42"	72"
48"	80"
54"	88"
60"	96"

SURFACE LIVE LOADING CONDITIONS

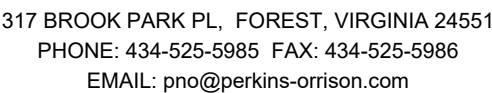
	SURFACE LIVE LOADING CONDITION	
PIPE DIA.	H-25	HEAVY CONSTRUCTION (75T AXLE LOAD) *
12" - 48"	12"	48"
54" - 60"	24"	60"

* VEHICLES IN EXCESS OF 75T MAY REQUIRE ADDITIONAL COVER



NOTES:

1. ALL PIPE SYSTEMS SHALL BE INSTALLED IN ACCORDANCE WITH ASTM D2321, "STANDARD PRACTICE FOR UNDERGROUND INSTALLATION OF THERMOPLASTIC PIPE FOR SEWERS AND OTHER GRAVITY FLOW APPLICATIONS", LATEST ADDITION
2. MEASURES SHOULD BE TAKEN TO PREVENT MIGRATION OF NATIVE FINES INTO BACKFILL MATERIAL, WHEN REQUIRED.
3. **FOUNDATION:** WHERE THE TRENCH BOTTOM IS UNSTABLE, THE CONTRACTOR SHALL EXCAVATE TO A DEPTH REQUIRED BY THE ENGINEER AND REPLACE WITH SUITABLE MATERIAL AS SPECIFIED BY THE ENGINEER. AS AN ALTERNATIVE AND AT THE DISCRETION OF THE DESIGN ENGINEER, THE TRENCH BOTTOM MAY BE STABILIZED USING A GEOTEXTILE MATERIAL.
4. **BEDDING:** SUITABLE MATERIAL SHALL BE VDOT STD. 21A/ 21B. THE CONTRACTOR SHALL PROVIDE DOCUMENTATION FOR MATERIAL SPECIFICATION TO ENGINEER. UNLESS OTHERWISE NOTED BY THE ENGINEER, MINIMUM BEDDING THICKNESS SHALL BE 6" (100mm) FOR 4"-24" (100mm-600mm); 6" (150mm) FOR 30"-60" (750mm-900mm).
5. **HAUNCH:** SUITABLE MATERIAL SHALL BE VDOT STD. 21A/ 21B. THE CONTRACTOR SHALL PROVIDE DOCUMENTATION FOR MATERIAL SPECIFICATION TO ENGINEER. MATERIAL SHALL BE INSTALLED PER MANUFACTURERS RECOMMENDATION.
6. **INITIAL BACKFILL:** SUITABLE MATERIAL SHALL BE VDOT STD. 21A/ 21B IN THE PIPE ZONE EXTENDING NOT LESS THAN 6" ABOVE CROWN OF PIPE. THE CONTRACTOR SHALL PROVIDE DOCUMENTATION FOR MATERIAL SPECIFICATION TO ENGINEER. MATERIAL SHALL BE INSTALLED PER MANUFACTURERS RECOMMENDATION.
7. **MINIMUM COVER:** MINIMUM COVER, IN NON-TRAFFIC APPLICATIONS (GRASS OR LANDSCAPE AREAS) IS 12" FROM THE TOP OF PIPE TO GROUND SURFACE. ADDITIONAL COVER MAY BE REQUIRED TO PREVENT FLOATION. FOR TRAFFIC APPLICATIONS, MINIMUM COVER, IS 12" UP TO 48" DIAMETER PIPE AND 24" OF COVER FOR 54"-60" DIAMETER PIPE, MEASURED FROM TOP OF PIPE TO BOTTOM OF FLEXIBLE PAVEMENT OR TO TOP OF RIGID PAVEMENT.



17 W. NELSON STREET LEXINGTON, VIRGINIA 24450
PHONE: 540-464-9001 FAX: 540-464-5009
EMAIL: pno@perkins-orrison.com

CONSULTANTS

SEAL:



JOB:

ORCHARD MARKETPLACE
CAR WASH
AMSTERDAM MAGISTERIAL DISTRICT
DALEVILLE, VIRGINIA
BOTETOURT COUNTY

CLIENT:

THOMAS BUILDERS

2	06/02/2022	PER WWA COMMENTS
1	06/16/2022	PER COUNTY COMMENT
MARK	DATE	DESCRIPTION
ISSUE:		04/04/2022
CONTOUR INTERVAL:		2'
DESIGNED BY:		RHO
DRAWN BY:		PWS
CHECKED BY:		RHO

SHEET TITLE

UTILITY DETAILS

SHEET	JURISDICTION PROJECT #
C204	DEV-SITE-22-00005
JOB NO.:	SHEET NO
21442	7 of 14