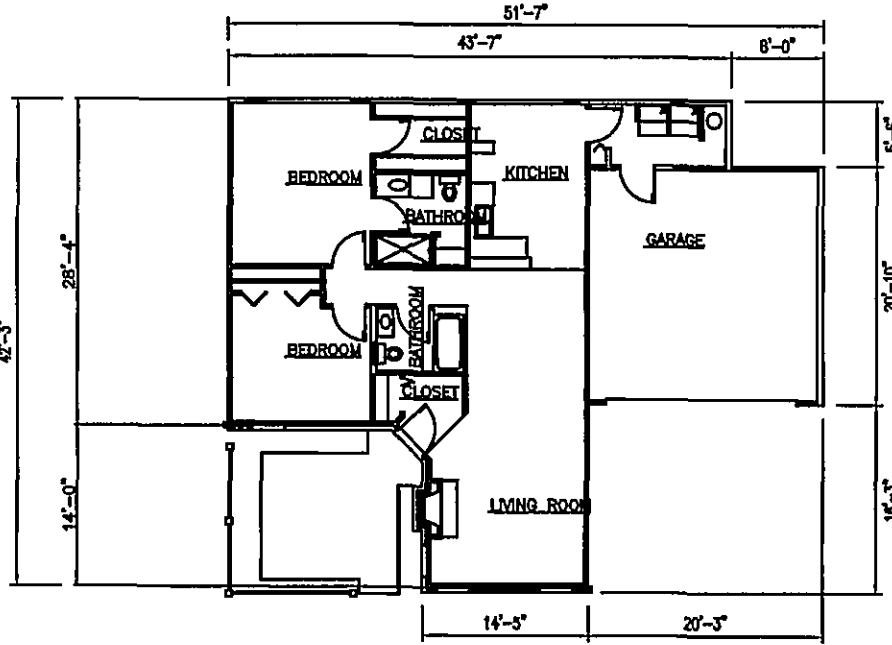
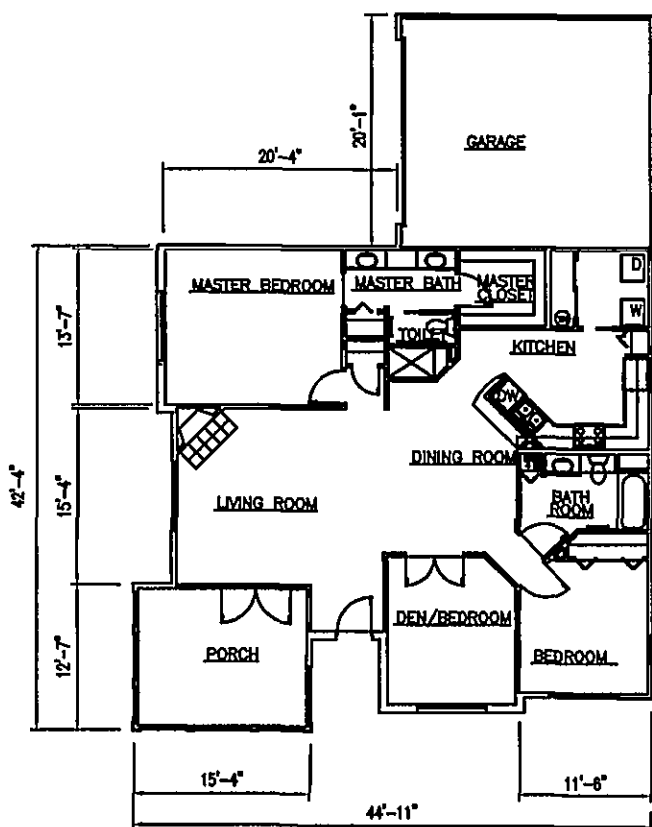


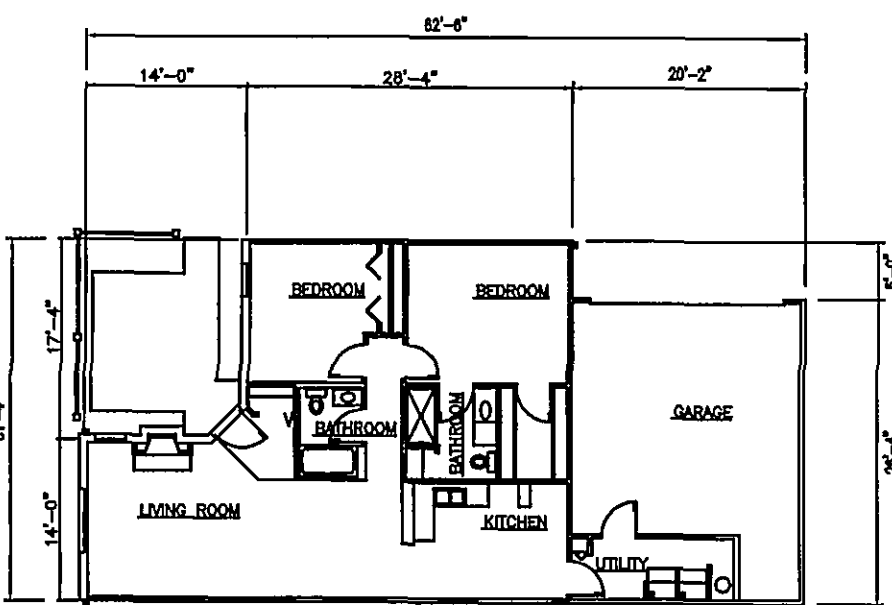
ABBY UNIT SHOWN FOR INFORMATIONAL PURPOSES ONLY.



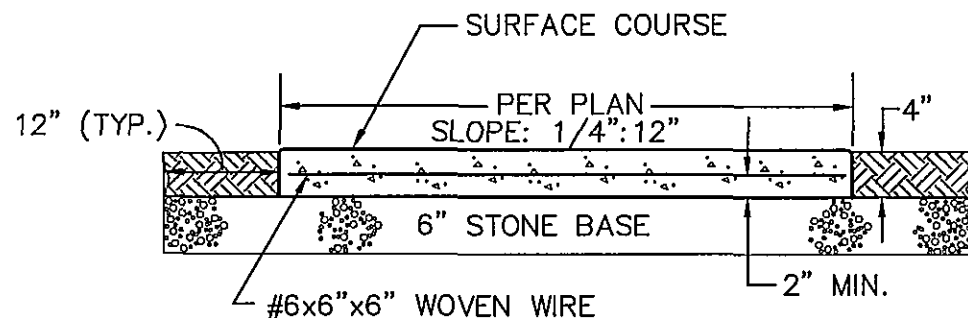
VILLA UNIT SHOWN FOR INFORMATIONAL PURPOSES ONLY.



CANTERBURY UNIT SHOWN FOR INFORMATIONAL PURPOSES ONLY.

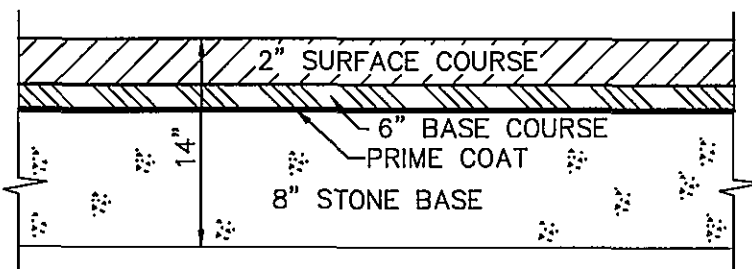


CHATEAU UNIT SHOWN FOR INFORMATIONAL PURPOSES ONLY.



BASE STONE: 6" VDOT #21A  
SURFACE COURSE: 4" CLASS 3000 PSI CONCRETE  
SIDEWALK TO BE POURED MONOLITHICALLY WITH A WOOD  
FLOAT FINISH. CONSTRUCTION JOINTS @ 6' INTERVALS,  
EXPANSION JOINTS @ 30' INTERVALS FILLED W/  
PRE-MOLDED 3/8" JOINT FILLER.

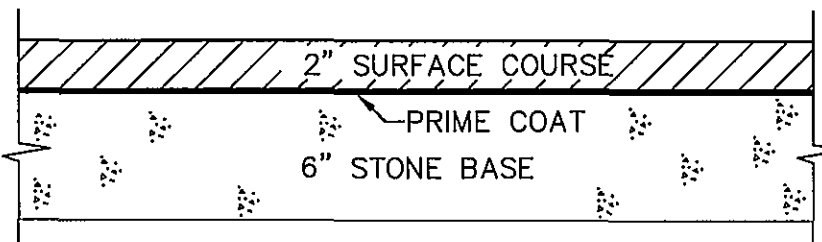
TYP. CONC. WALK SECTION  
N.T.S.



BASE STONE: 6" V.D.O.T. # 21B AGGREGATE  
PRIME COAT: RC-250 @ 0.40 GALLONS PER SQ. YD.  
BASE COURSE: 6" V.D.O.T. TYPE BM-25.0  
COVER STONE: 15 LBS. PER SQ. YD. #8 COVER STONE  
SURFACE COURSE: 2" BITUMINOUS CONCRETE  
V.D.O.T. TYPE SM-9.5

NOTE:  
APPLICATION OF TACK COAT MAY BE WAIVED BY  
ENGINEER IF SURFACE COURSE IS APPLIED IMMEDIATELY  
AFTER PLACING AND COMPACTING THE BASE COURSE.

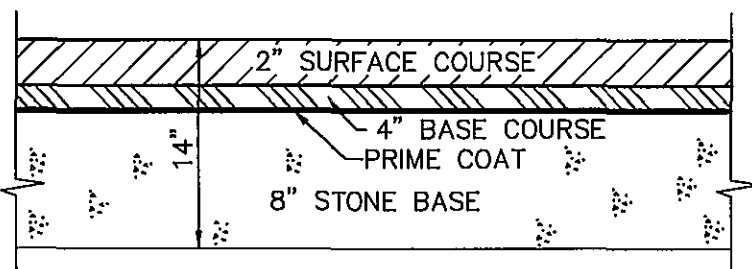
NOTE: ACTUAL PAVING SECTIONS TO  
BE BASED ON CBR RESULTS.  
VDOT PAVEMENT SECTION  
N.T.S.  
FOR ROUTE 781 TURN LANES



SURFACE COURSE: 2" V.D.O.T. TYPE SM-9.5D  
PRIME COAT: CRS-1 @ 0.05 GALLONS PER SQ. YD.  
BASE STONE: 6" V.D.O.T. TYPE 1, SIZE 21B

NOTE:  
APPLICATION OF TACK AT JOINTS, ADJACENT TO  
CURBS, GUTTERS OR OTHER APPURTENANCES  
SHALL BE APPLIED BY HAND WAND AT THE RATE  
OF 0.2 GAL./SQ.YD.

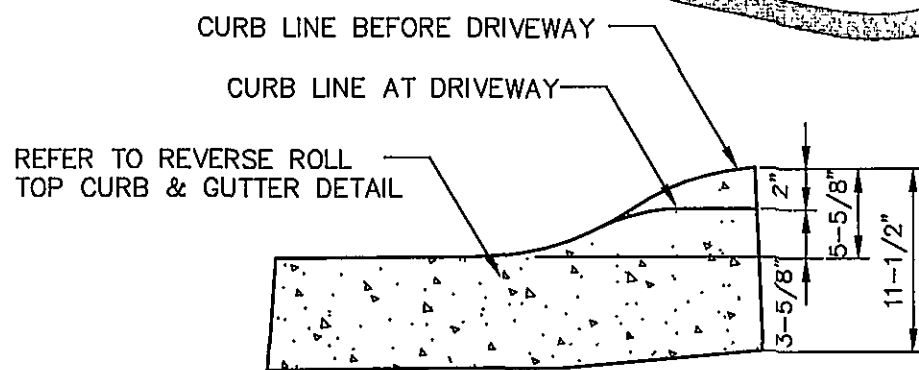
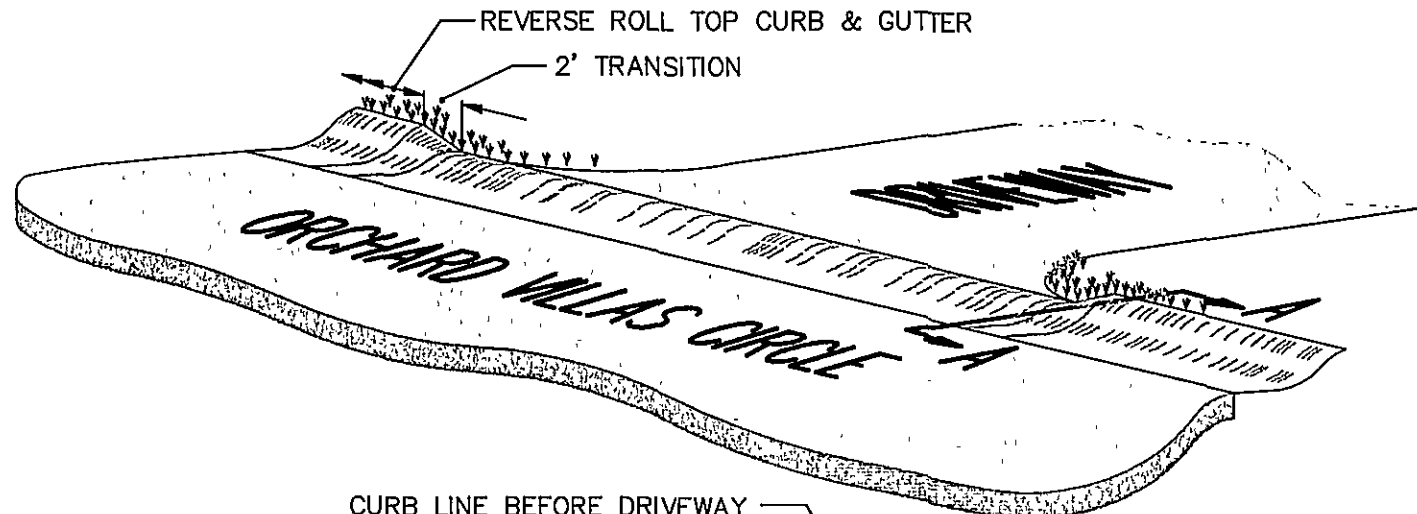
NOTE: ACTUAL PAVING SECTIONS TO  
BE BASED ON CBR RESULTS.  
LIGHT DUTY PAVING SECTION  
N.T.S.



BASE STONE: 8" V.D.O.T. TYPE 1, SIZE 21A OR 21B  
PRIME COAT: RC-250 @ 0.40 GALLONS PER SQ. YD.  
BASE COURSE: 4" V.D.O.T. TYPE BM-2  
COVER STONE: 15 LBS. PER SQ. YD. #8 COVER STONE  
SURFACE COURSE: 2" BITUMINOUS CONCRETE  
V.D.O.T. TYPE SM-2A

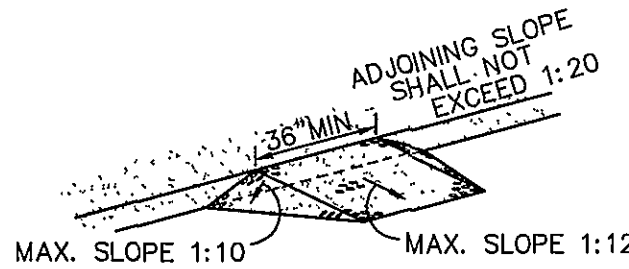
NOTE: ACTUAL PAVING SECTIONS TO  
BE BASED ON CBR RESULTS.

HEAVY DUTY PAVING SECTION  
N.T.S.

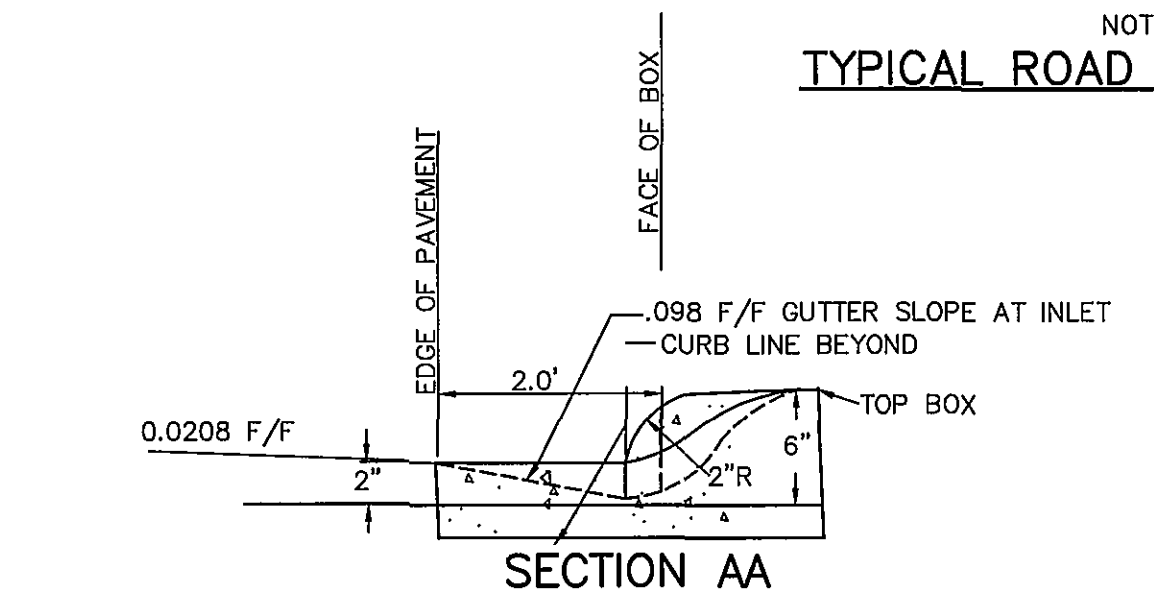


SECTION AA  
CURB TRANSITION DETAIL  
N.T.S.

6" CURB  
N.T.S.

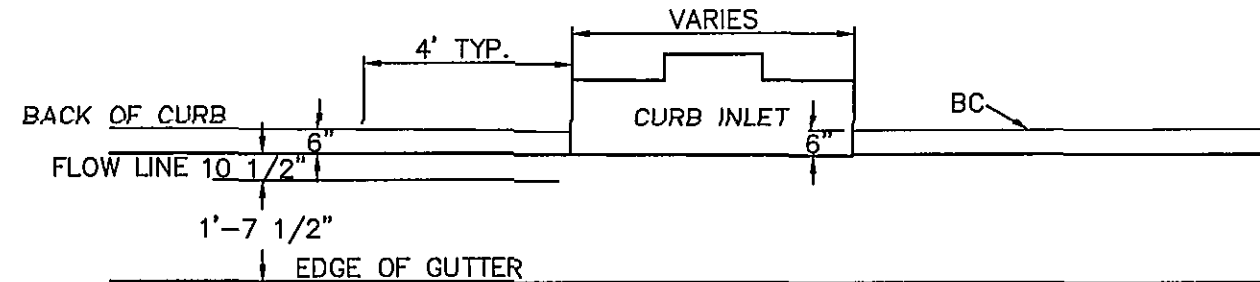


BUILT-UP CURB  
CURB RAMPS SHALL COMPLY WITH  
LOCAL CODE AND THE A.D.A.  
HANDICAP RAMP DETAIL  
N.T.S.

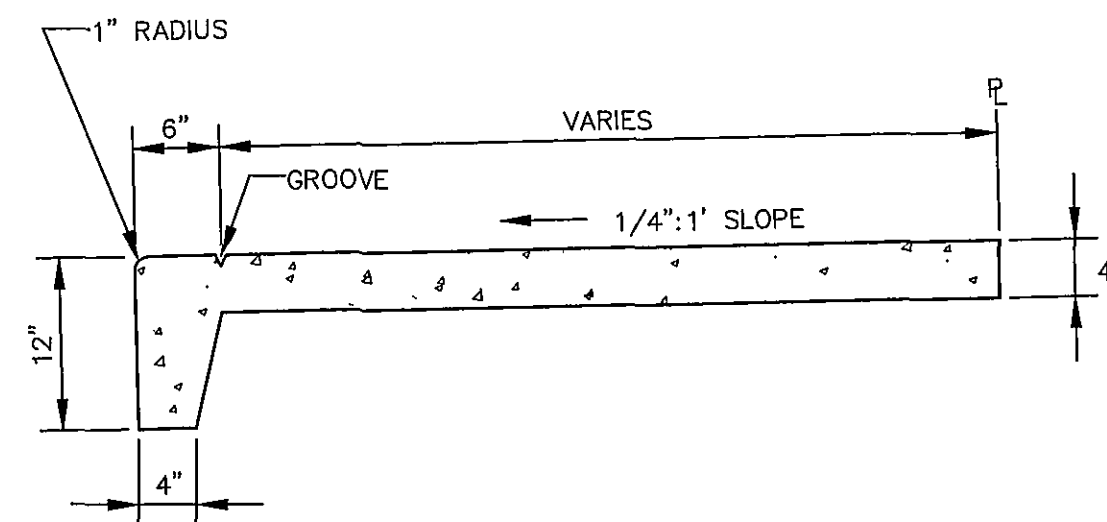


SECTION AA

PROFILE

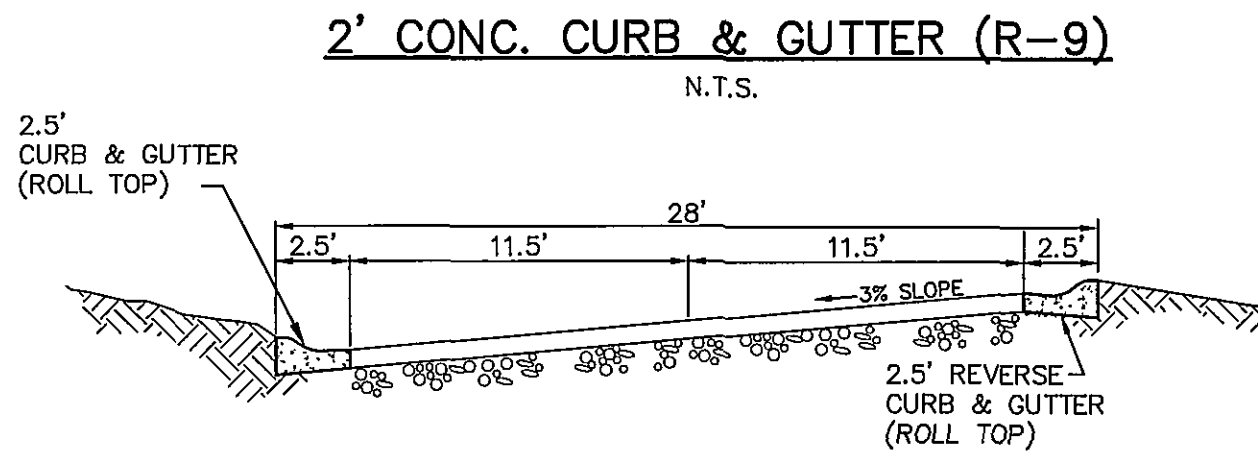


CURB TRANSITION DETAIL  
N.T.S.

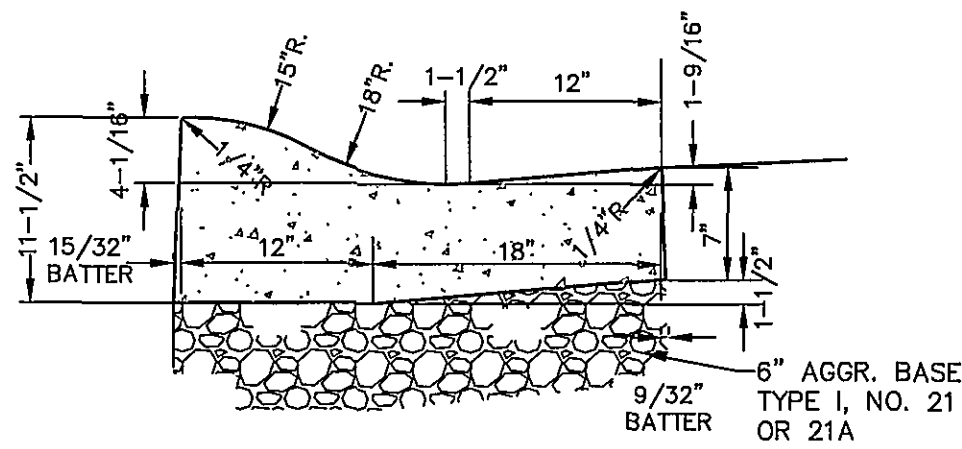


FACEDOWN SIDEWALK

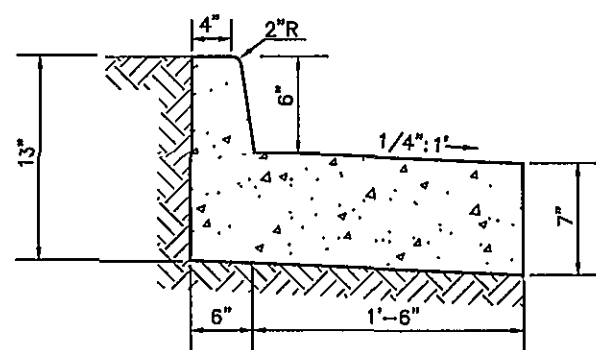
2' CONC. CURB & GUTTER (R-9)  
N.T.S.



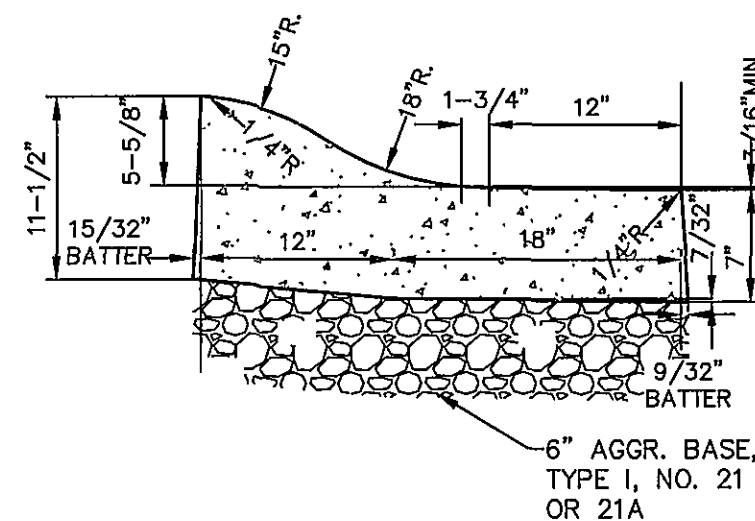
NOTE: ACTUAL PAVING TO BE BASED ON CBR RESULTS.  
TYPICAL ROAD SECTION WITH ROLL TOP CURB & GUTTER  
N.T.S.



ROLL TOP CURB & GUTTER  
N.T.S.



MOD. REVERSED CG-6 CURB AND GUTTER  
N.T.S.



REVERSE ROLL TOP CURB & GUTTER  
N.T.S.

\*ENGINEERING & SURVEYING >> PLANNING

HURT & PROFFITT  
INCORPORATED

2524 LANGHORNE ROAD  
LYNCHBURG VA 24501  
800.242.4906 TOLL FREE  
434.847.7795 MAIN  
434.847.0047 FAX

SITE PLAN DETAIL SHEET

FOR

ORCHARD VILLAS

ROANOKE COUNTY, VIRGINIA

PROJECT NO. 20040345  
G.L. NO. 260-04-C4.7  
FILE NO. LS-11039  
DATE: 10/29/04  
DRAWN BY: DLC  
CHECKED BY: MDM

COMMONWEALTH OF VIRGINIA  
MICHAEL D. MORGAN, II  
No. 041247  
02/10/06  
PROFESSIONAL ENGINEER

HURT & PROFFITT

SHEET NO.  
30 OF 33

4	12/06/05	PER COUNTY COMMENTS
5	12/12/05	PER VDOT COMMENTS
6	01/23/06	PER COUNTY AND VDOT COMMENTS

Feb 10, 2006 - 12:13pm V:\LandProjects\20040345\dwg\Detail-R1.dwg