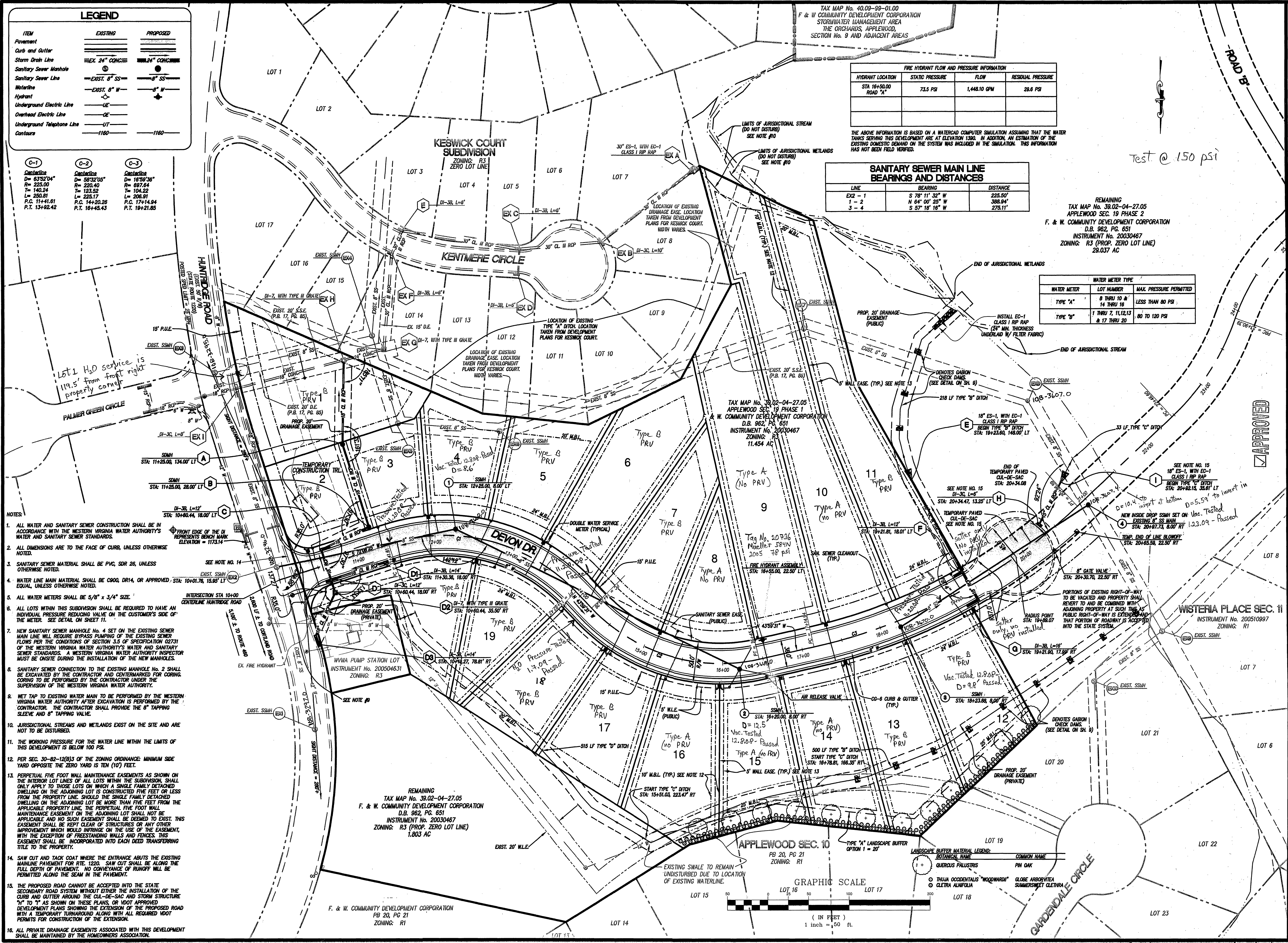


07230comp01-05.dwg 07230comp01-05.dwg 07230comp01-05.dwg



LUMSDEN ASSOCIATES, P.C.
ENGINEERS-SURVEYORS-PLANNERS
ROANOKE, VIRGINIA

PHONE: (540) 774-4411
FAX: (540) 772-9415
E-MAIL: MAIL@LUMSDENPC.COM

4664 BRAMBLETON AVENUE
P.O. BOX 20669
ROANOKE, VIRGINIA 24018

COMMONWEALTH OF VIRGINIA
Lic. No. 033002
5/5/08
PROFESSIONAL ENGINEER
THOMAS C. DALE

"THE ORCHARDS"
APPROVED FOR
PREPARED BY
F. & W. COMMUNITY
DEVELOPMENT CORPORATION
HOLLINS MAGISTERIAL DISTRICT
ROANOKE COUNTY, VIRGINIA

NO.	DATE	DESCRIPTION
1		
2		
3		
4		
5		

DATE: MAY 5, 2008
SCALE: 1" = 50'
COMMISSION NO.: 07-230
SHEET 5 OF 13

As-Built 2.27.09 K. Winslow