

DEVELOPMENT PLAN  
FOR  
**"THE ORCHARDS"**  
**SECTION No. 2**  
**"CORTLAND MEADOWS"**

SITUATED IN

HOLLINS MAGISTERIAL DISTRICT, ROANOKE COUNTY, VIRGINIA  
VALLEY MAGISTERIAL DISTRICT, BOTETOURT COUNTY, VIRGINIA

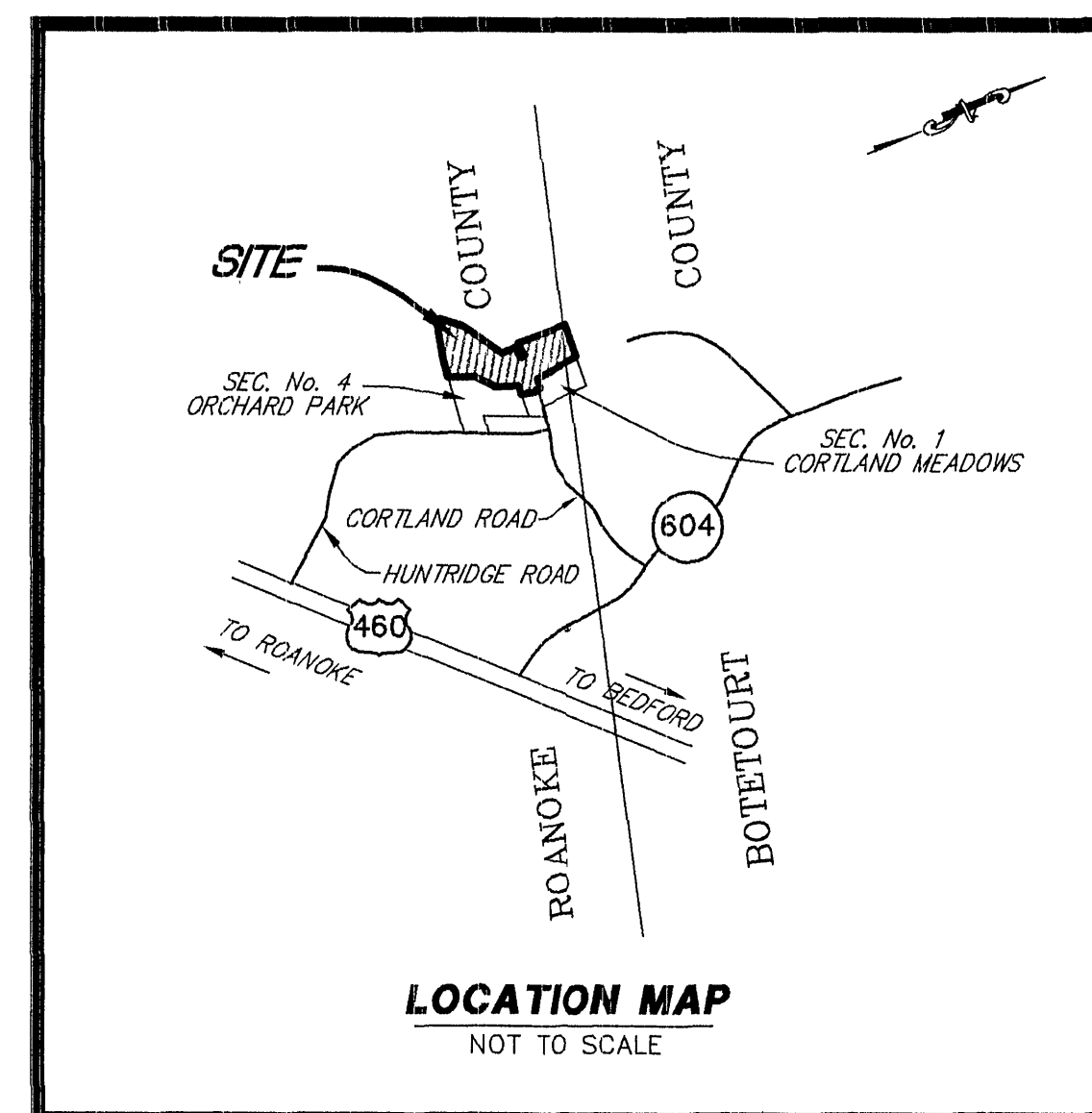
DATE: 6 JUNE 2002  
[27 JANUARY 2003]

PROPERTY OF

F. & W. COMMUNITY DEVELOPMENT CORP.

**INDEX OF DRAWINGS**

SHEET No.	DESCRIPTION
1.	LUMSDEN ASSOCIATES COVER SHEET
2.	ROANOKE COUNTY STD. COVER SHEET
3.	RECORD MAP
4.	NOTES & DETAILS
5.	DIMENSIONAL LAYOUT & UTILITIES
6.	GRADING & STORM DRAINAGE PLAN
7.	PROFILES
8.	PROFILES
9.	EROSION & SEDIMENT CONTROL PLAN
10.	ROANOKE CO. STD. EROSION CONTROL DETAIL SHEET
11.	BOTETOURT CO. STD. EROSION CONTROL DETAIL SHEET
12.	SEDIMENT BASIN DETAILS



**"AS-BUILT"**

- NOTE:
- "AS BUILT" INFORMATION TAKEN FROM  
PLAN FURNISHED BY J. P. TURNER &  
BROTHERS, INC., GENERAL CONTRACTOR.
  - "AS-BUILT" DIMENSIONS SHOWN IN BRACKETS.

LUMSDEN ASSOCIATES, P.C.  
ENGINEERS—SURVEYORS—PLANNERS  
ROANOKE, VIRGINIA

I AM CERTIFIED BY THE STATE OF VIRGINIA AS A "RESPONSIBLE LAND  
DISTURBER". I SHALL BE RESPONSIBLE FOR THE IMPLEMENTATION OF  
THE EROSION AND SEDIMENT CONTROL PLAN AS SHOWN.

SIGNATURE: \_\_\_\_\_  
PRINTED NAME: \_\_\_\_\_  
CERTIFICATE No. \_\_\_\_\_  
EXPIRATION DATE: \_\_\_\_\_  
TELEPHONE No. \_\_\_\_\_  
ADDRESS: \_\_\_\_\_

REVISIONS			
DATE	SHEETS	DATE	SHEETS

WVWA ID# 6PVJHL

SHEET 1 OF 12  
COMM: #2001-307