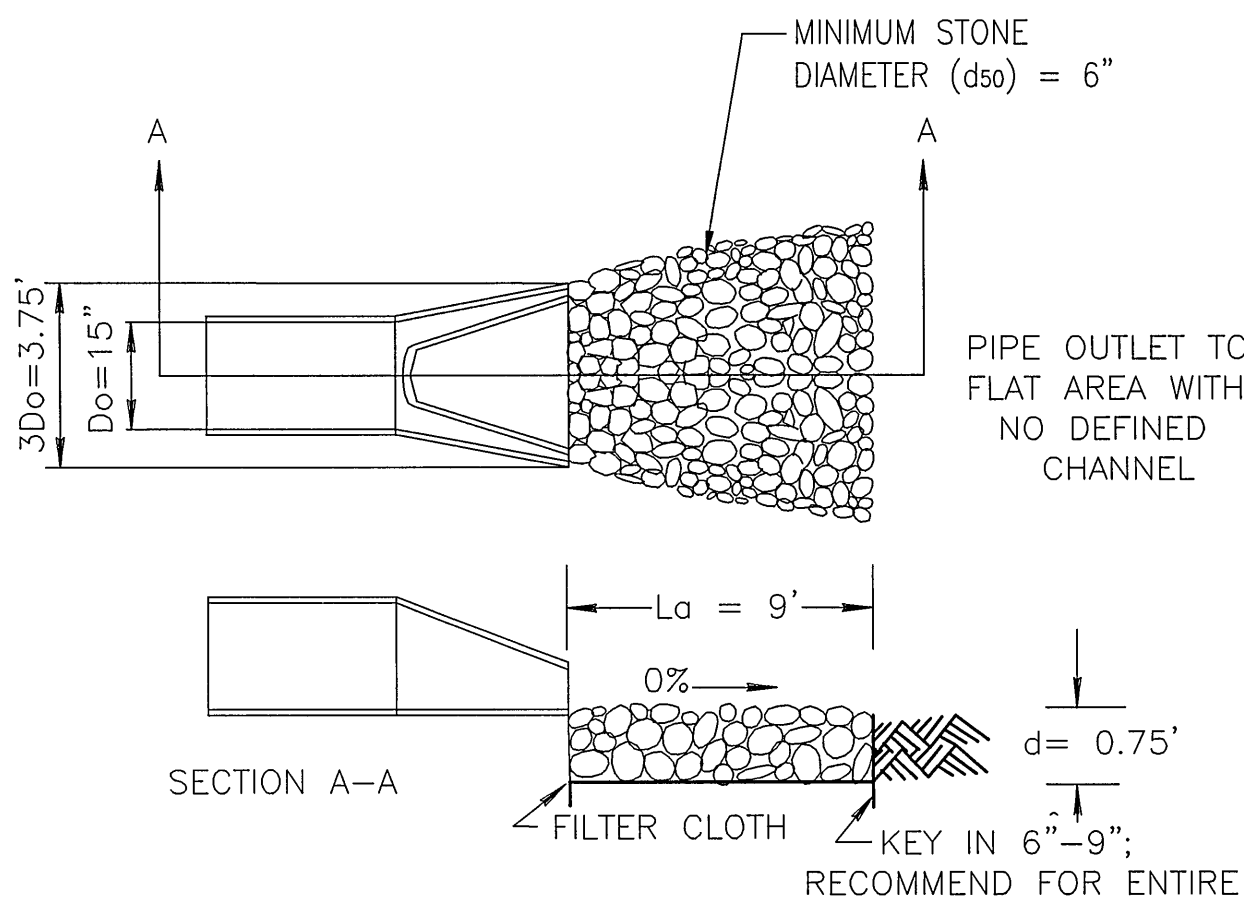


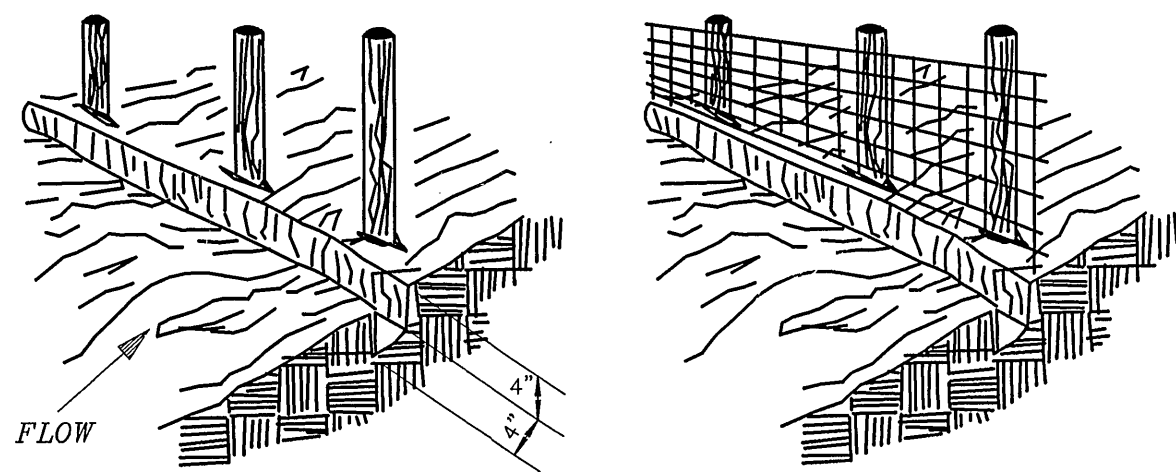
PIPE OUTLET CONDITIONS



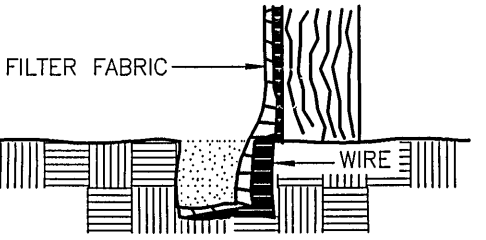
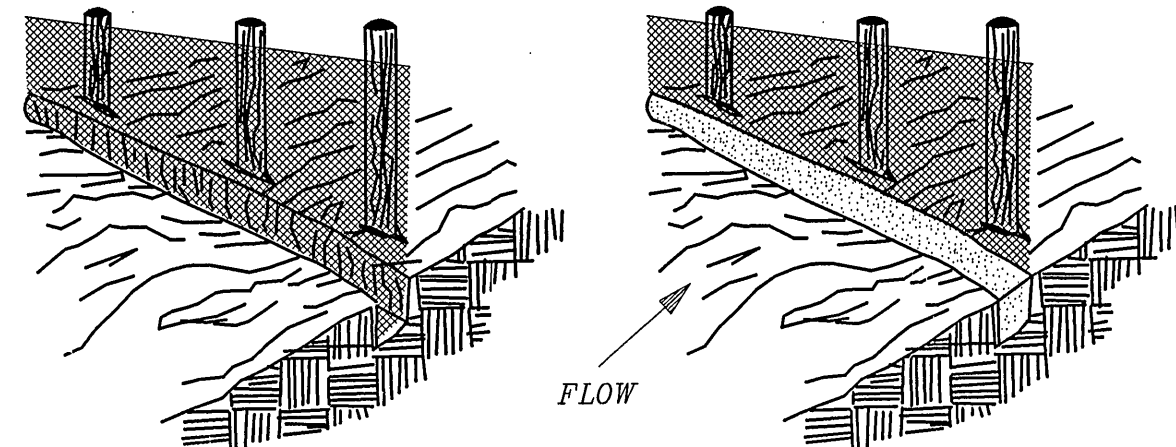
NOTES: 1. APRON LINING MAY BE RIPRAP, GROUTED RIPRAP GABION BASKET OR CONCRETE.  
2.  $L_a$  IS CALCULATED USING PLATES 3.18-3 & 3.18-4  
3.  $d=1.5$  TIMES MAX STONE DIAM, BUT NOT LESS THAN 6\".

OUTLET PROTECTION **OP**

1. SET POSTS AND EXCAVATE A 4"x4" TRENCH UPSLOPE ALONG THE LINE OF POSTS.  
2. STAPLE WIRE FENCING TO THE POSTS.

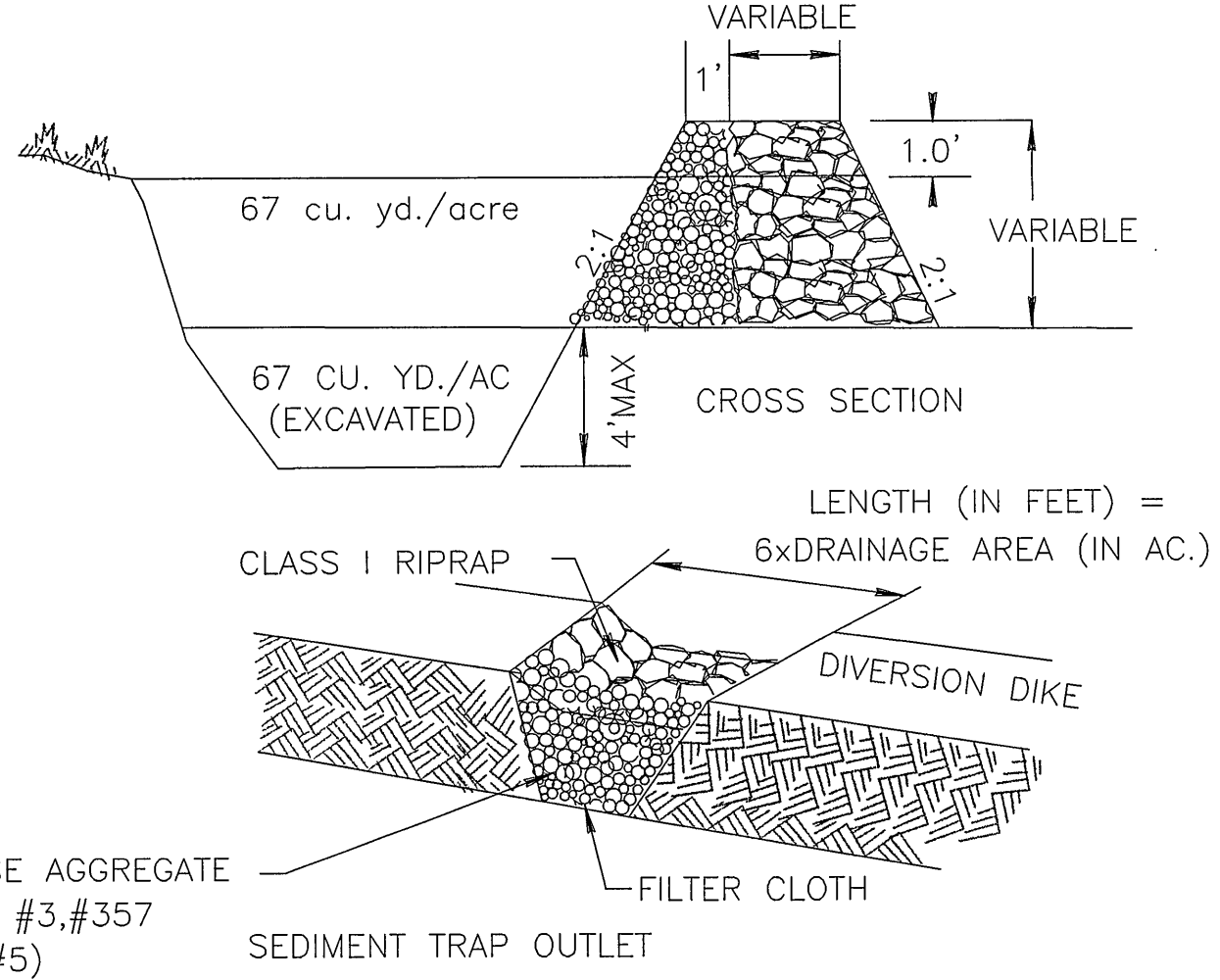


3. ATTACH THE FILTER FABRIC TO THE WIRE FENCE AND EXTEND IT INTO THE TRENCH.  
4. BACKFILL AND COMPACT THE EXCAVATED SOIL.



NOTE: THIS DETAIL IS FROM THE VIRGINIA EROSION AND SEDIMENT CONTROL HANDBOOK-1992. THE CONTRACTOR SHALL COMPLY WITH THE DESIGN CRITERIA, THE CONSTRUCTION SPECIFICATION, THE MAINTENANCE REQUIREMENTS AND THE REMOVAL REQUIREMENTS CONTAINED THEREIN FOR THIS ITEM.

SILT FENCE **SF**

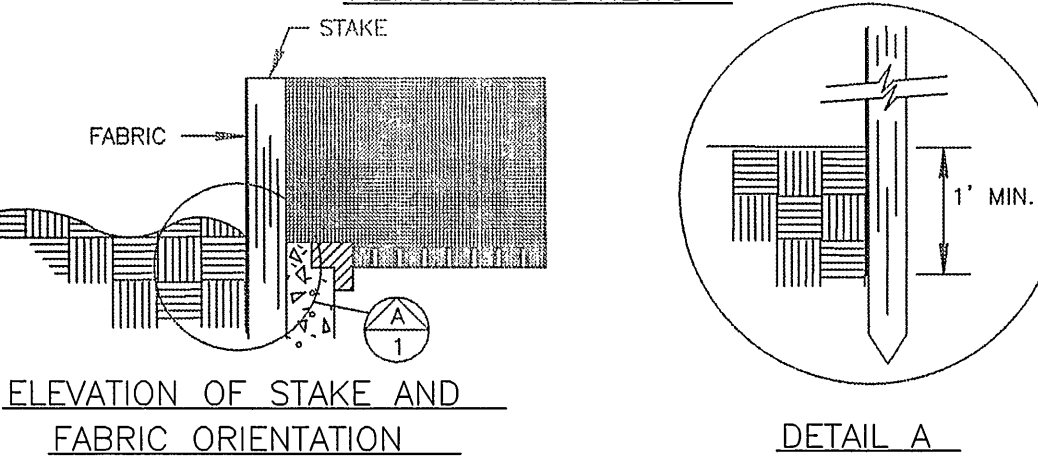
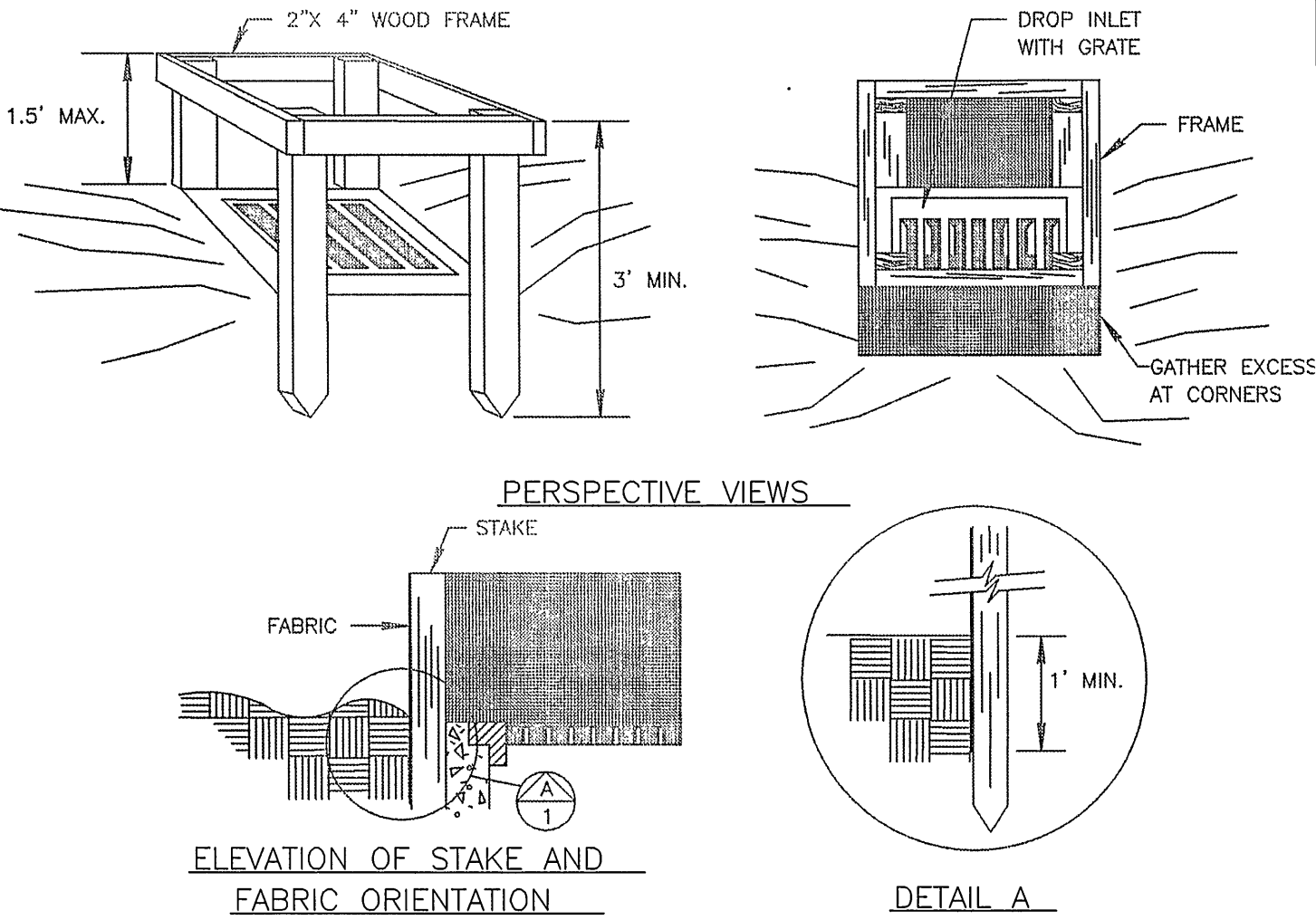


	H	H <sub>o</sub>	W
1.5	0.5	2.0	
2.0	1.0	2.0	
2.5	1.5	2.5	
3.0	2.0	2.5	
3.5	2.5	3.0	
4.0	3.0	3.0	
4.5	3.5	4.0	
5.0	4.0	4.5	

NOTE: THIS DETAIL IS FROM THE VIRGINIA EROSION AND SEDIMENT CONTROL HANDBOOK-1992. THE CONTRACTOR SHALL COMPLY WITH THE DESIGN CRITERIA, THE CONSTRUCTION SPECIFICATION, THE MAINTENANCE REQUIREMENTS AND THE REMOVAL REQUIREMENTS CONTAINED THEREIN FOR THIS ITEM.

TEMPORARY SEDIMENT TRAP **ST**

SILT FENCE DROP INLET PROTECTION

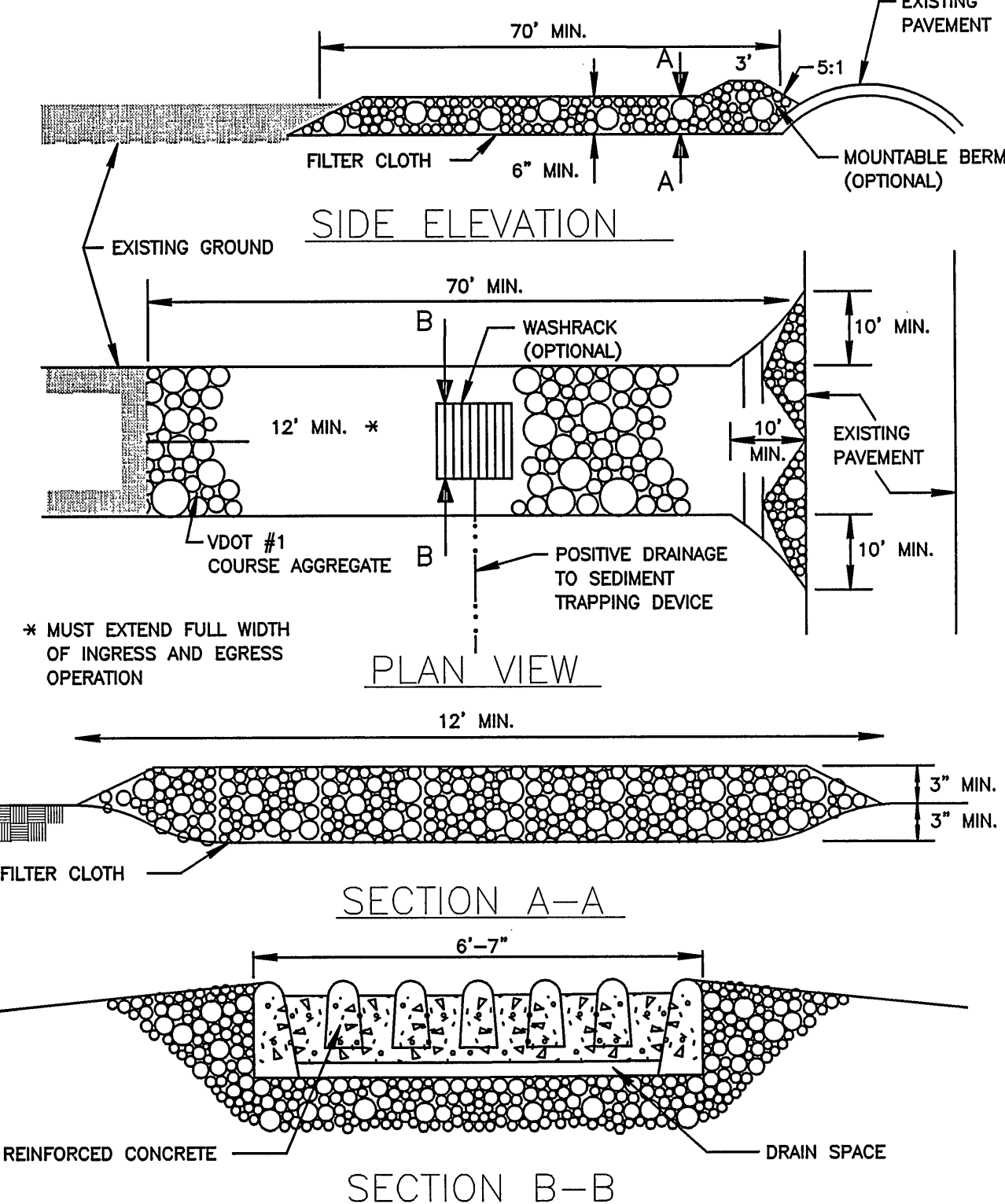


NOTE: THIS METHOD OF INLET PROTECTION IS APPLICABLE WHERE THE INLET DRAINS A RELATIVELY FLAT AREA (SLOPE NO GREATER THAN 5%) WHERE THE INLET SHEET OR OVERLAND FLOWS (NOT EXCEEDING 1 C.F.S.) ARE TYPICAL. THE METHOD SHALL NOT APPLY TO INLETS RECEIVING CONCENTRATED FLOWS, SUCH AS IN STREET OR HIGHWAY MEDIANS.

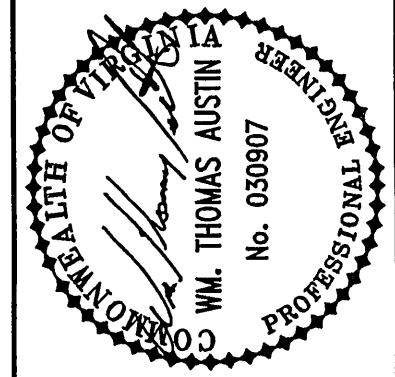
STORM DRAIN INLET PROTECTION **IP**

- TYPE A**  
15 OCTOBER TO 1 FEBRUARY  
K-31 FESCUE @ 5 LB / 1000 SF  
BORZY WINTER RYE @ 1/2 LB / 1000 SF  
1 FEBRUARY TO 1 JUNE  
K-31 FESCUE @ 5 LB / 1000 SF  
ANNUAL RYE @ 1/2 LB / 1000 SF  
1 JUNE TO 1 SEPTEMBER  
K-31 FESCUE @ 5 LB / 1000 SF  
GERMAN MILLET @ 1/2 LB / 1000 SF  
1 SEPTEMBER TO 15 OCTOBER  
K-31 FESCUE @ 5 LB / 1000 SF  
ANNUAL RYE @ 1/2 LB / 1000 SF
- TYPE B (SLOPES 3:1 OR STEEPER)**  
15 MARCH TO 1 MAY  
CROWN VETCH @ 1/2 LB / 1000 SF  
PERENNIAL RYEGRASS @ 1/2 LB / 1000 SF  
RED TOP @ 1/8 LB / 1000 SF  
15 AUGUST TO 1 OCTOBER  
CROWN VETCH @ 1/2 LB / 1000 SF  
PERENNIAL RYEGRASS @ 1/2 LB / 1000 SF  
RED TOP @ 1/8 LB / 1000 SF
- LIME:** 90 LB / 1000 SF PULVERIZED AGRICULTURAL LIMESTONE  
**FERTILIZER:** 5-20-10 @ 25 LB / 1000 SF  
38-0-0 @ 7 LB / 1000 SF  
**MULCH:** IF REQUIRED, SHALL BE USED OVER ALL SEEDED AREAS AND SHALL BE APPLIED IN ACCORDANCE WITH SECTION 3.35 OF THE VIRGINIA EROSION AND SEDIMENT CONTROL HANDBOOK, LATEST EDITION.  
**SOIL CONDITIONING:** INCORPORATION OF LIME AND FERTILIZER, SELECTION OF CERTIFIED SEED, MULCHING, MAINTENANCE OF NEW SEEDLINGS, AND RESEEDING SHALL BE IN ACCORDANCE WITH SPECIFICATIONS CONTAINED WITHIN THE VIRGINIA SOIL EROSION AND SEDIMENT CONTROL HANDBOOK, LATEST EDITION. ADDITIONAL SEEDING TO BE PERFORMED AS REQUIRED BY THE INSPECTOR.  
**SEED APPLICATION:** APPLY SEED UNIFORMLY WITH A CYCLONE SEEDER, DRILL, CULTIPACKER SEEDER, OR HYDROSEEDER ON A FIRM, FRIABLE, SEEDBED. MAXIMUM SEEDING DEPTH SHALL BE 1/4 INCH.

PERMANENT SEEDING MIXTURE **PS**



STONE CONSTRUCTION ENTRANCE **CE**



Revisions	Date
1 SUBMIT COMPREHENSIVE DEVELOPMENT PLAN	10-01-03
2 CITY OF ROANOKE COMMENTS	11-18-03
3 CITY OF ROANOKE COMMENTS	12-03-03

Issue Date:	September 17, 2003
Drawn By:	CLZ
Designed By:	CLZ
Checked By:	WTA
Date:	9-17-03

**Mattem & Craig**  
CONSULTING ENGINEERS • SURVEYORS  
701 FIRST STREET, S.W.  
ROANOKE, VIRGINIA 24016  
(540) 346-9342  
FAX (540) 346-7691

HABITAT FOR HUMANITY/WOODLEIGH ROAD & PANORAMA AVENUE  
COMPREHENSIVE DEVELOPMENT PLAN  
**DETAILS**  
CITY OF ROANOKE, VIRGINIA

Vertical Scale:  
N/A  
Horizontal Scale:  
N/A  
Commission Number:  
1567-D4  
Sheet No.: