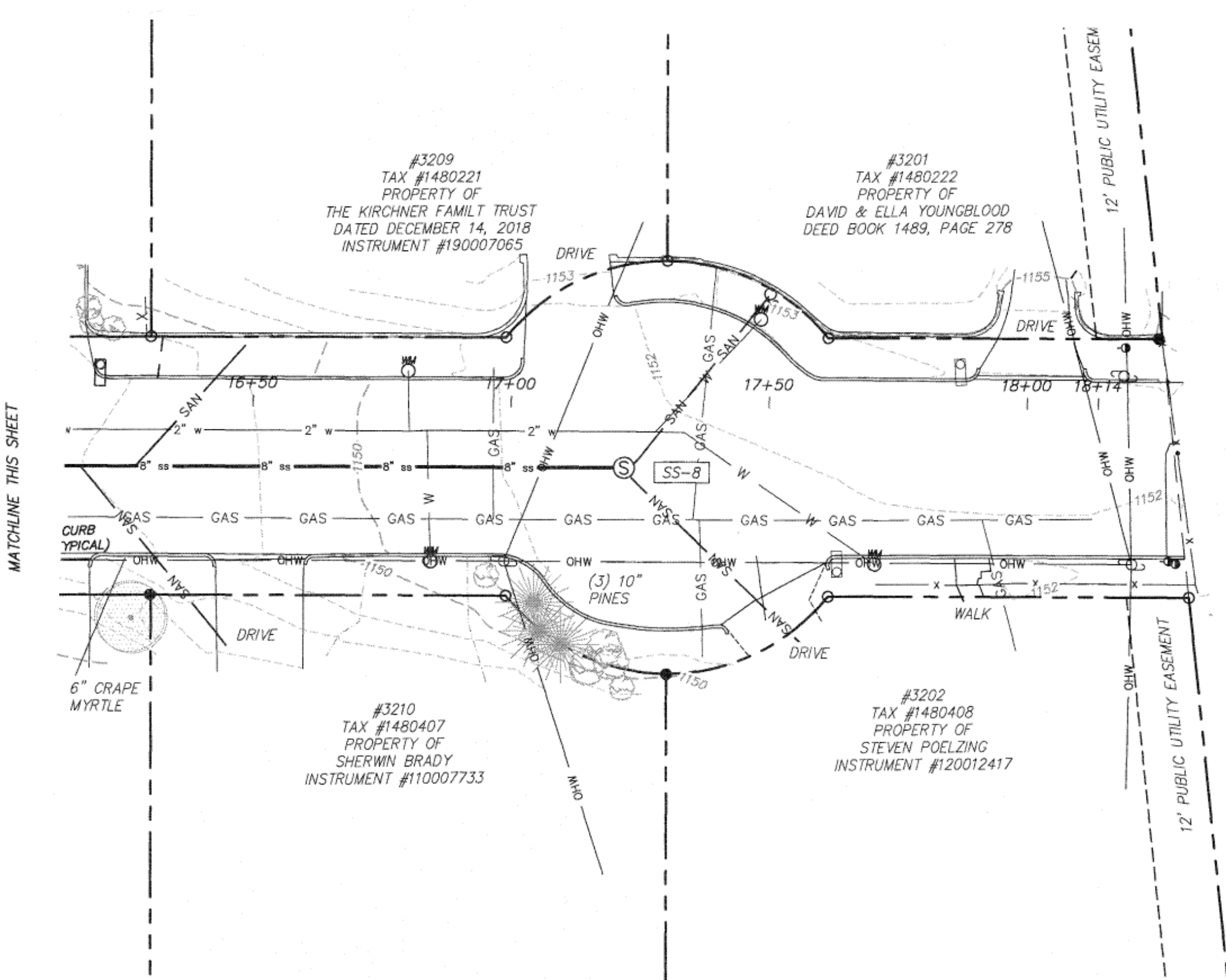


MEDIUM OF
VA STATE PLUMBER
ZONE 100 L.A. SOUTH

MATCHLINE THIS SHEET



TAX #1380102
PROPERTY OF
COMMONWEALTH OF VIRGINIA STATE
BOARD OF OCCUPATIONAL COLLEGES
DEED BOOK 1209, PAGE 5990

GENERAL NOTES:

1. THIS PLAT WAS PREPARED WITHOUT BENEFIT OF A TITLE REPORT AND IS SUBJECT THERETO. THEREFORE, THERE MAY EXIST ENCUMBRANCES WHICH AFFECT THE PROPERTY NOT SHOWN HEREON.
2. THE SUBJECT PROPERTY IS WITHIN THE LIMITS OF ZONE "X-UNSHADED" AS SHOWN ON THE FEMA FLOOD INSURANCE RATE MAPS 51161C0251 G, EFFECTIVE DATE OF SEPTEMBER 28, 2007. THIS DETERMINATION IS BASED ON SAID MAP AND HAS BEEN VERIFIED BY ACTUAL FIELD ELEVATIONS.

TOPOGRAPHY CERTIFICATION:

THIS PARTIAL TOPOGRAPHIC SURVEY WAS COMPLETED UNDER THE DIRECT AND RESPONSIBLE CHARGE OF ALAN CLEMONS, FROM AN ACTUAL GROUND SURVEY MADE UNDER MY SUPERVISION; THAT THE IMAGERY AND/OR ORIGINAL DATA WAS OBTAINED ON MARCH 18TH, AND 19TH, 2019 AND THAT THIS PLAT, MAP OR DIGITAL GEOSPATIAL DATA INCLUDING METADATA MEETS THE MINIMUM ACCURACY STANDARDS UNLESS OTHERWISE NOTED.

UTILITY NOTE:

THE UTILITIES SHOWN HEREON BY PARKER DESIGN GROUP ARE BASED ON FIELD LOCATION OF OBSERVED EVIDENCE OF UTILITIES. MARKINGS MADE BY MISS UTILITY TICKETS #B006202723-00B AND #B006202736-00B, AND RECORDS AVAILABLE AT TIME OF SURVEY. REMARKING OF UTILITIES AND VERIFICATION ARE SUGGESTED BEFORE ANY POSSIBLE EARTH WORK IS PERFORMED.

SANITARY SEWER

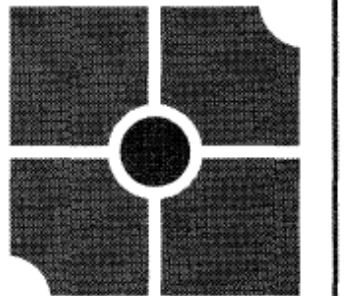
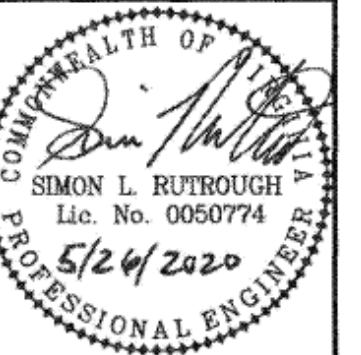
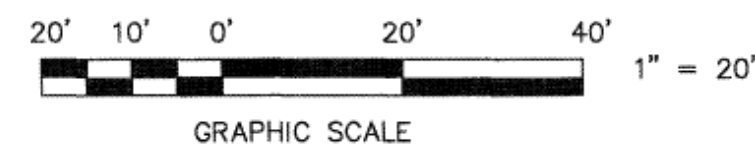
SS-6
TOP = 1110.82'
INVIN = 8' T.C. = 1101.22'
INVO = 8' T.C. = 1101.12'

SS-7
TOP = 1132.32'
INVIN 8' T.C. = 1124.22'
INVO 8' T.C. = 1124.02'

SS-8
TOP = 1151.56'
INVIN 8' T.C. = 1138.41'
INVIN MISSING INFO
INVO 8' T.C. = 1138.31'

LEGEND:

- MONUMENT FOUND
- UTILITY POLE
- GUY ANCHOR
- OVERHEAD WIRE
- STREET SIGN
- DEEDED CORNER
- FENCE
- SHRUB
- WATER METER
- WATER MANHOLE
- WATER LINE
- FIRE HYDRANT
- GAS VALVE
- GAS LINE
- SEWER MANHOLE
- SANITARY SEWER LINE
- STORM MANHOLE
- STORM SEWER LINE



parker
DESIGN GROUP
ENGINEERS • SURVEYORS
PLANNERS • LANDSCAPE ARCHITECTS
2122 Carolina Ave. SW
Roanoke, VA 24014
(540)-387-1153
1915-B W. Cary Street
Richmond, VA 23220
(804)-358-2947
www.parkerdgd.com

These documents are the property of Parker Design Group (PDG) and may not be reproduced or used without the express permission of PDG. Any reuse of these documents without authorization of PDG will be at the sole risk of the individual or entity utilizing said documents.

PASLEY AVE & BANNISTER ST WATER LINE REPLACEMENT PLAN WESTERN VIRGINIA WATER AUTHORITY FRALIN PARK SUBDIVISION CITY OF ROANOKE, VIRGINIA

REVISIONS

DESIGNED BY:

MAC/REC

CHECKED BY:

MAC

SCALE:

1" = 20'

DATE:

MAY 26, 2020

PROJECT NUMBER:

20-0035

SHEET TITLE:

EXISTING
CONDITIONS

C1.3
4 OF 11