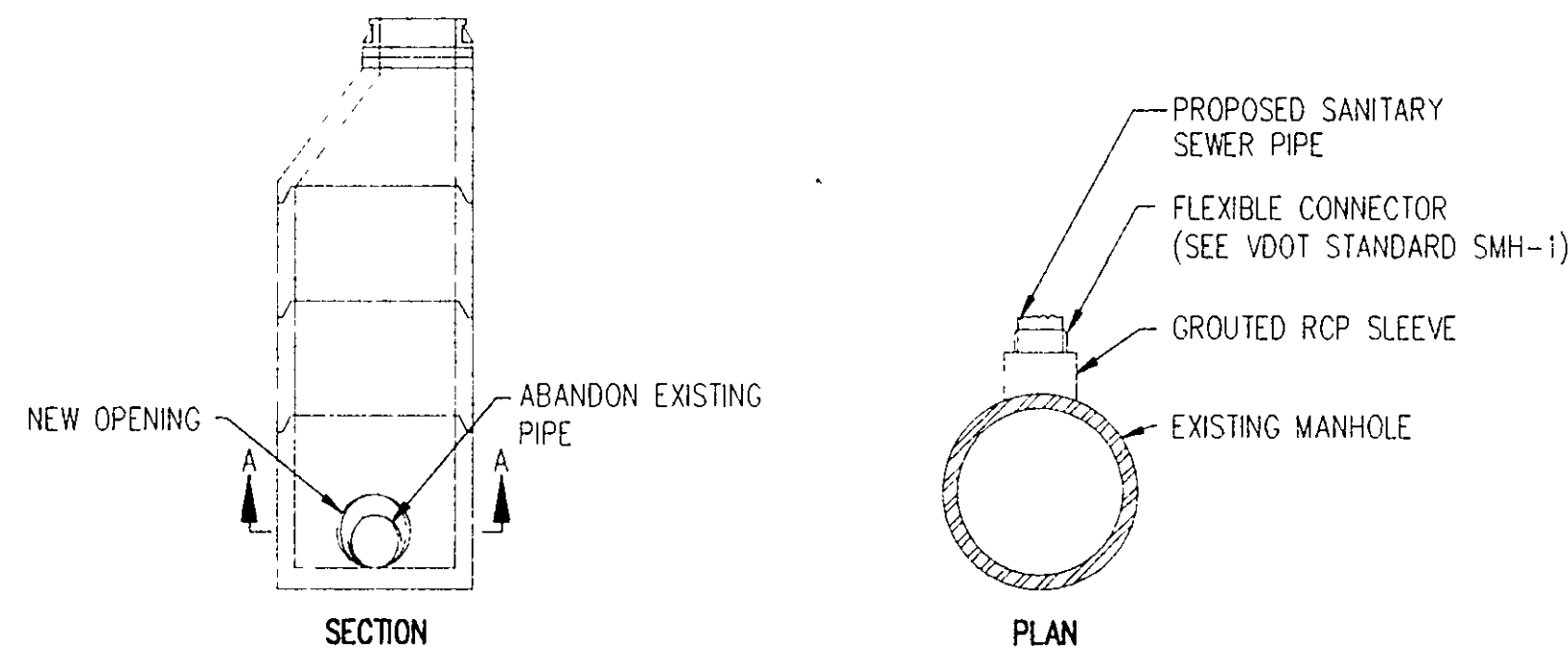


UTILITY ADJUSTMENT DETAILS

DESIGN FEATURES RELATING TO CONSTRUCTION OR TO REGULATION AND CONTROL OF TRAFFIC MAY BE SUBJECT TO CHANGE AS DEEMED NECESSARY BY THE DEPARTMENT

REVISED	FWHA REGION	STATE	FEDERAL AID PROJECT	ROUTE	STATE PROJECT	SHEET NO
	3	VA.		117	0117-128-101, RW-201 C-501	20(27)

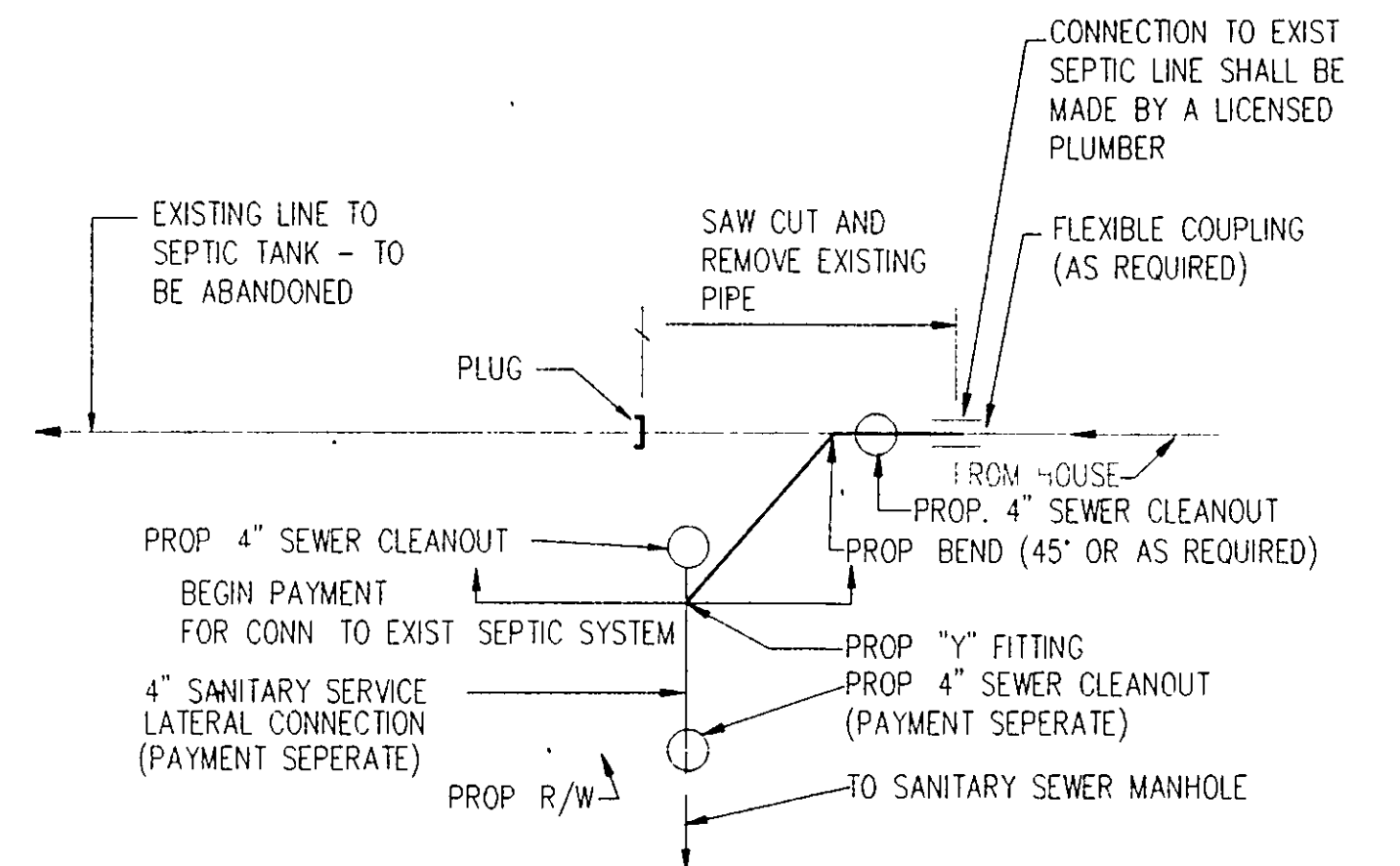
CONNECT TO EXISTING MANHOLE



1. ABANDON EXISTING PIPE OPENING.
2. PROVIDE NEW PIPE OPENING
3. INSERT AND GROUT NEW RCP, CLASS III, SLEEVE
4. INSERT NEW FLEXIBLE CONNECTOR.
5. PROVIDE RESHAPING OF INVERT IN ACCORDANCE WITH VDOT STANDARD IS-1

NO SCALE

CONNECT TO EXISTING SEPTIC SYSTEM

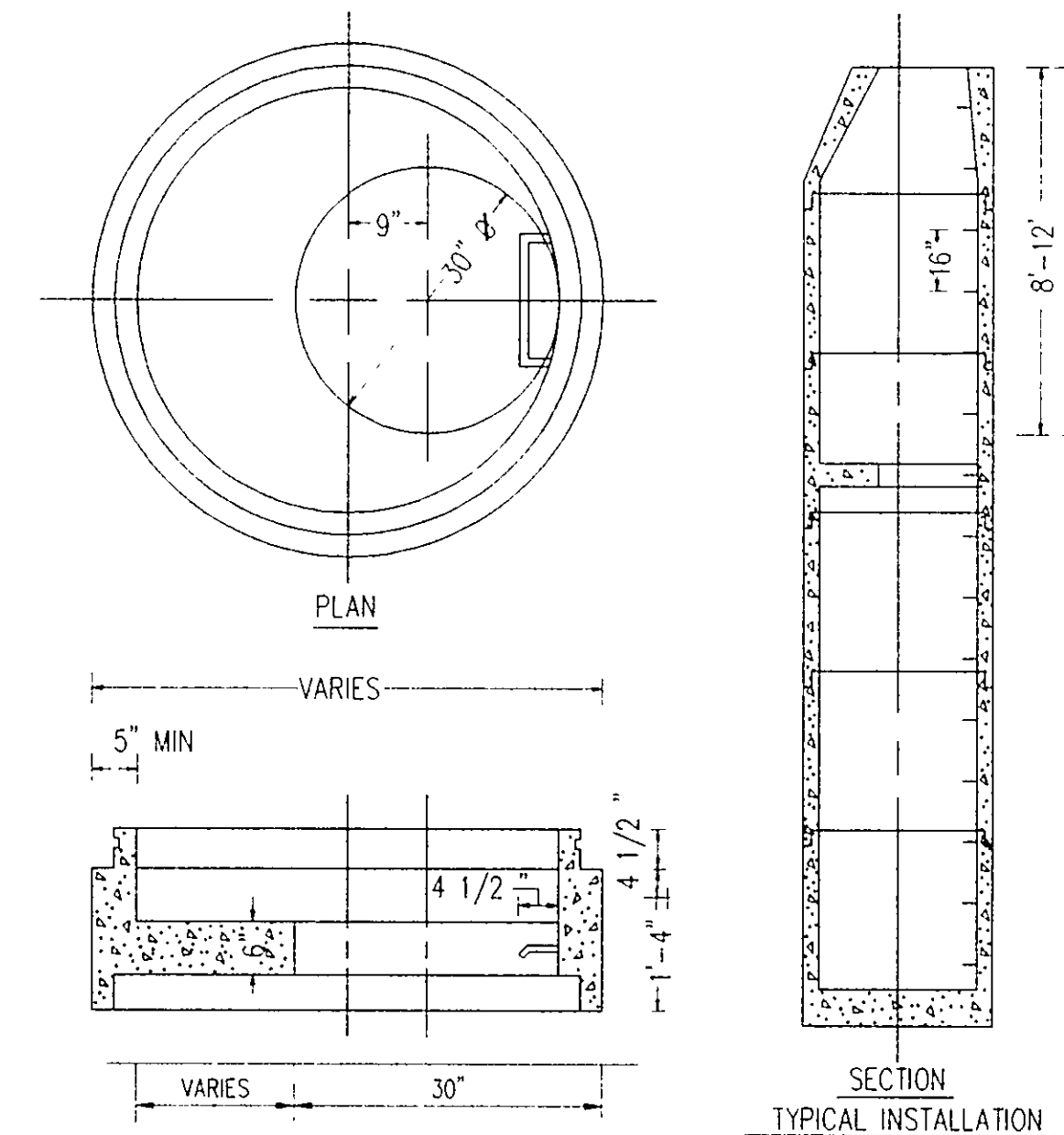


THE CONTRACTOR SHALL BE RESPONSIBLE FOR PROVIDING A LICENSED PLUMBER TO MAKE THE ACTUAL CONNECTION TO THE SEPTIC LINE AS SHOWN IN THE DETAIL. THE CONTRACTOR SHALL OBTAIN THE APPLICABLE SANITARY SEWER CONNECTION PERMITS FROM THE CITY OF ROANOKE. THE PROPERTY OWNER IS REQUIRED TO PAY THE CONNECTION FEE. THE SEPTIC TANK SHALL BE ABANDONED BY PUMPING THE TANK, REMOVING ITS TOP, AND FILLING THE TANK WITH APPROVED BACKFILL IN ACCORDANCE WITH SECTION 303.04 (g) OF THE VDOT ROAD AND BRIDGE SPECIFICATIONS (1991 ED). CONNECT TO EXIST SEPTIC SYSTEM SHALL INCLUDE ALL MATERIALS FROM THE "Y" FITTING TO THE CONNECTION WITH THE SEPTIC SYSTEM. THIS INCLUDES, BUT IS NOT LIMITED, TO THE FOLLOWING:

- 1-4" 45° BEND
- 1-4" WYE
- 2-4" SEWER CLEANOUTS
- APPROX 25 L.F. 4" SANITARY SERVICE LATERAL (IN ACCORDANCE WITH NOTE 18 ON SHEET (2))
- 1- ABANDON EXIST SEPTIC TANK
- 1-4" PLUG
- 1-4" FLEXIBLE COUPLING

NO SCALE

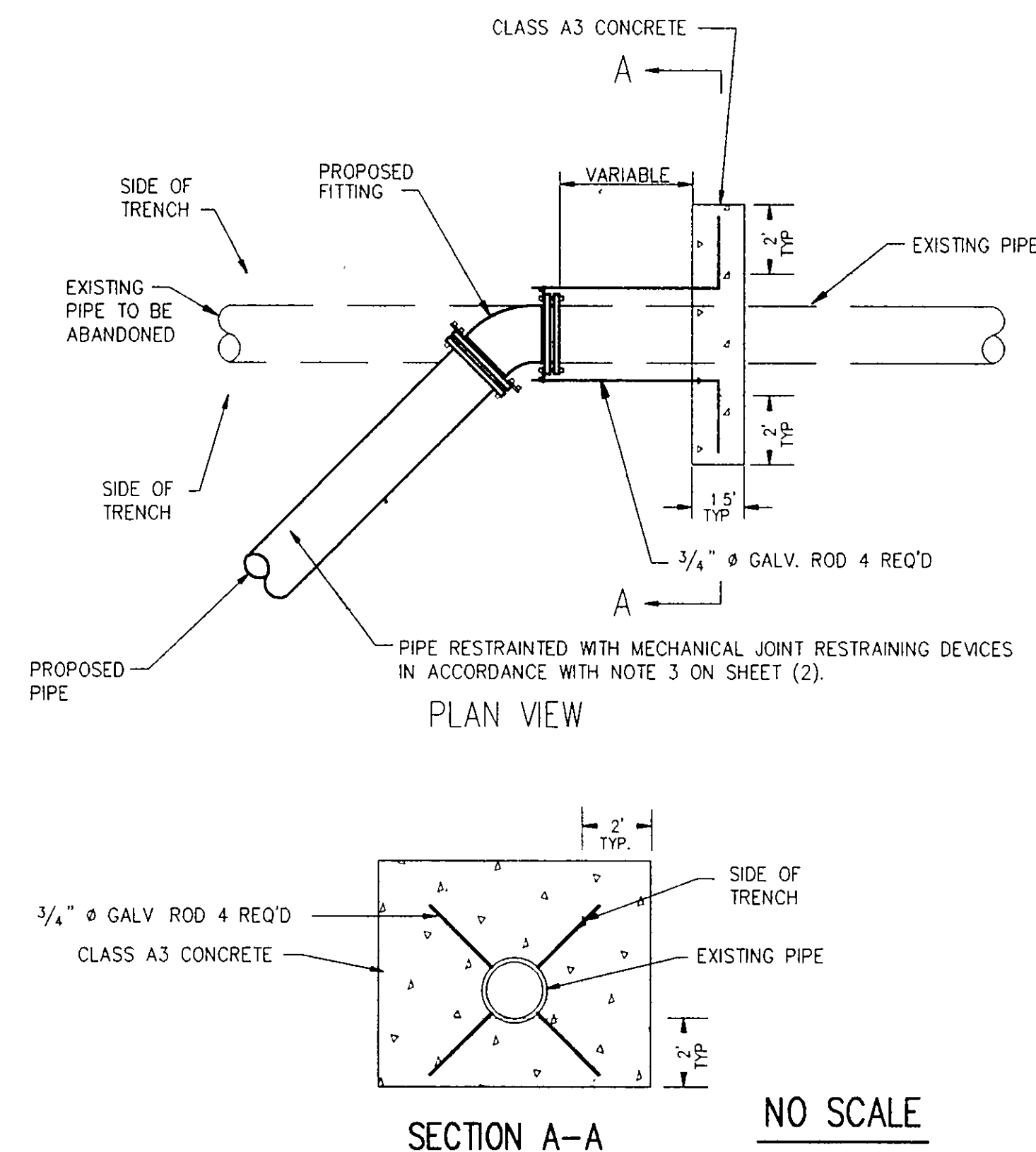
MANHOLE SAFETY SLAB



NOTES
TYPICAL INSTALLATION IS ONE SAFETY SLAB FOR EVERY 8 - 12 FEET OF MANHOLE DEPTH
ALL REINFORCEMENT ACCORDING TO ASTM C478

NO SCALE

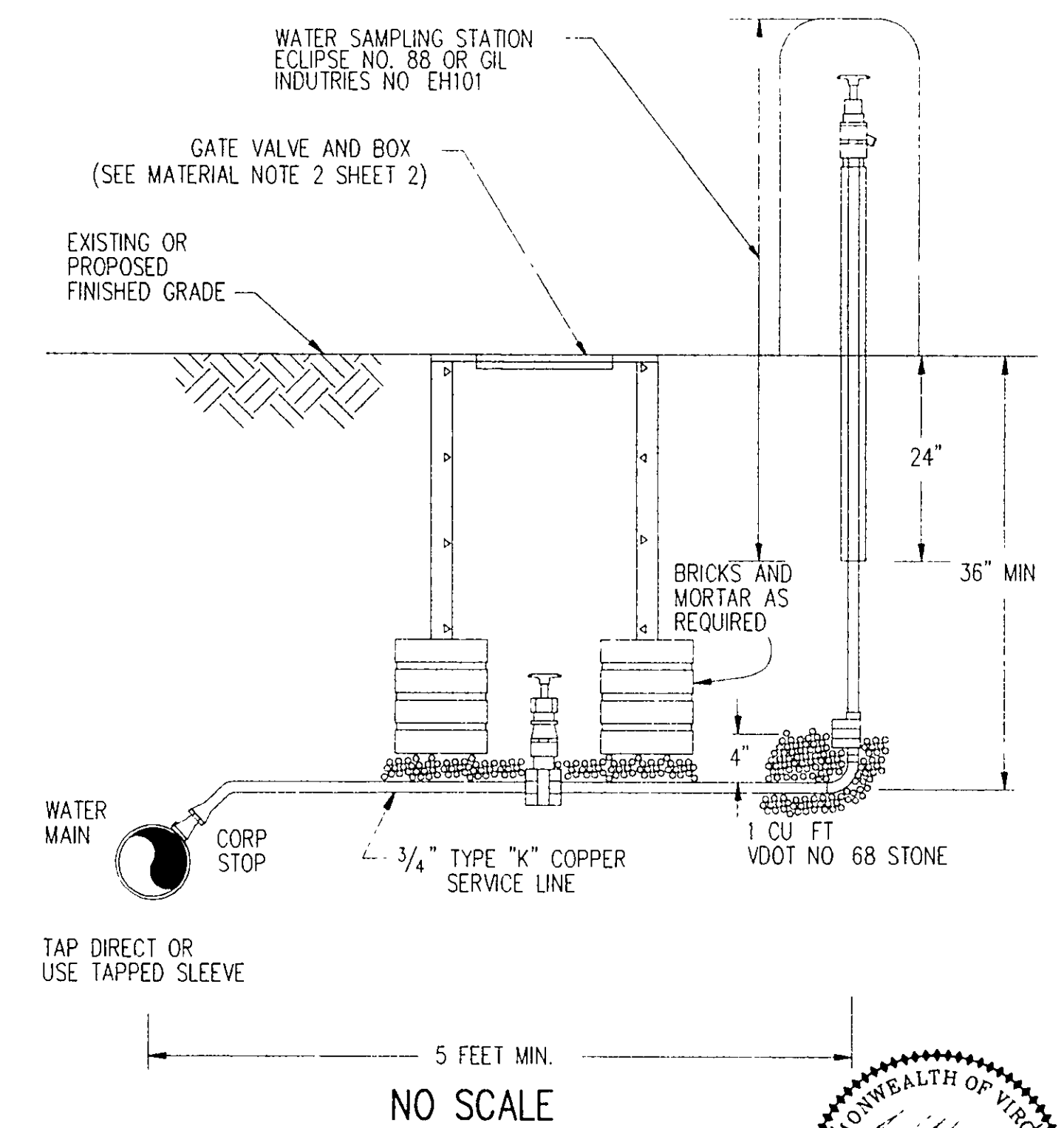
CONNECT TO EXISTING WATER MAIN DETAIL (ALTERNATE METHOD WHEN EXISTING PIPE WILL NOT ACCEPT MECHANICAL RESTRAINING DEVICE)



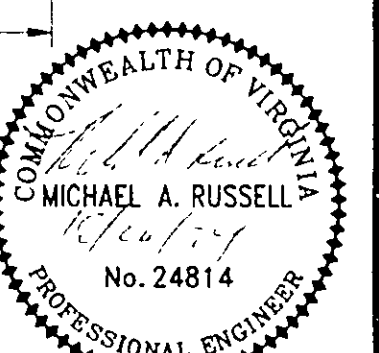
SECTION A-A

NO SCALE

SAMPLE TAP DETAIL



NO SCALE



PLAN NO	PROJECT	FILE NO.	SHEET NO.
A	0117-128-101		20(27)