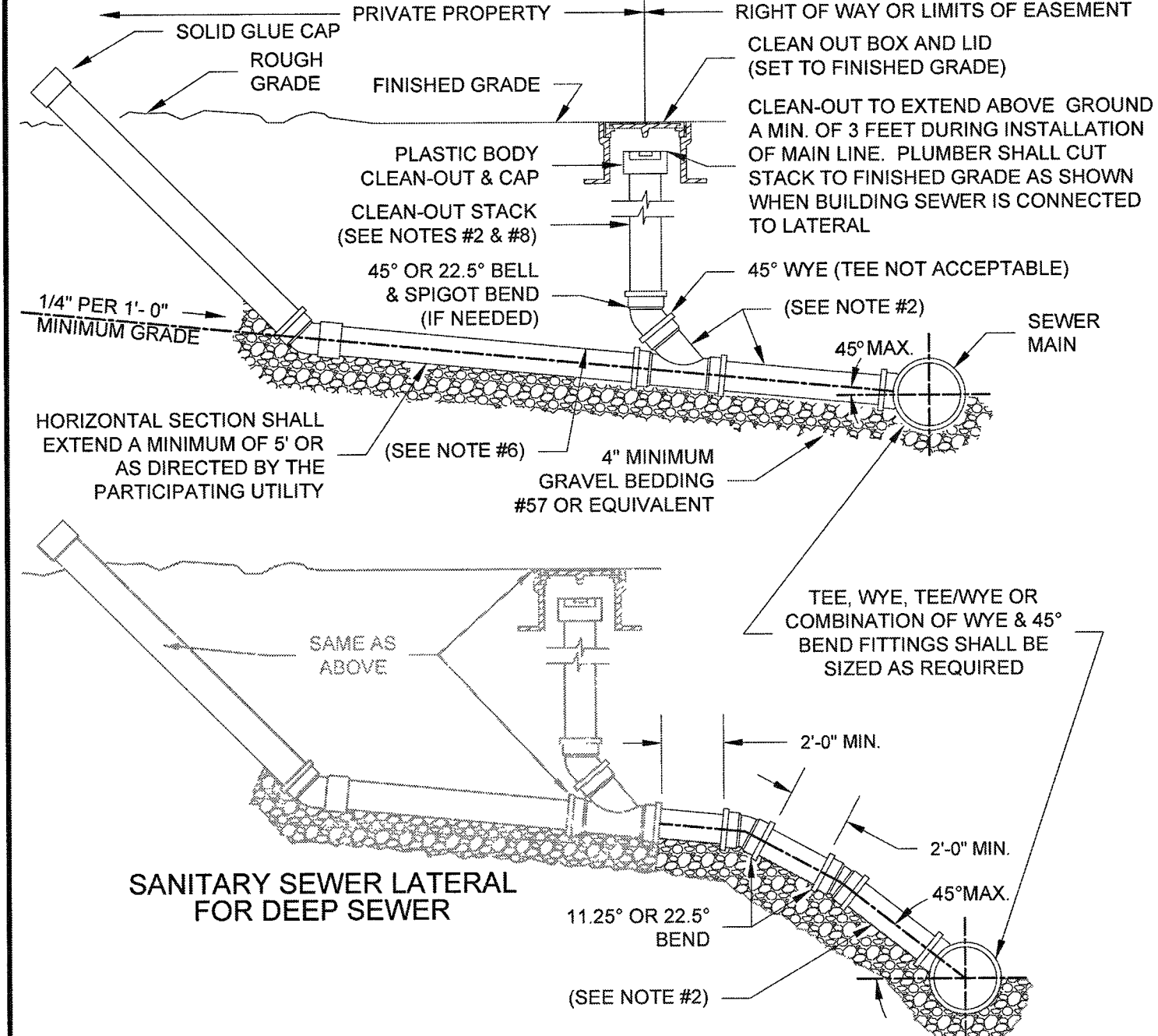


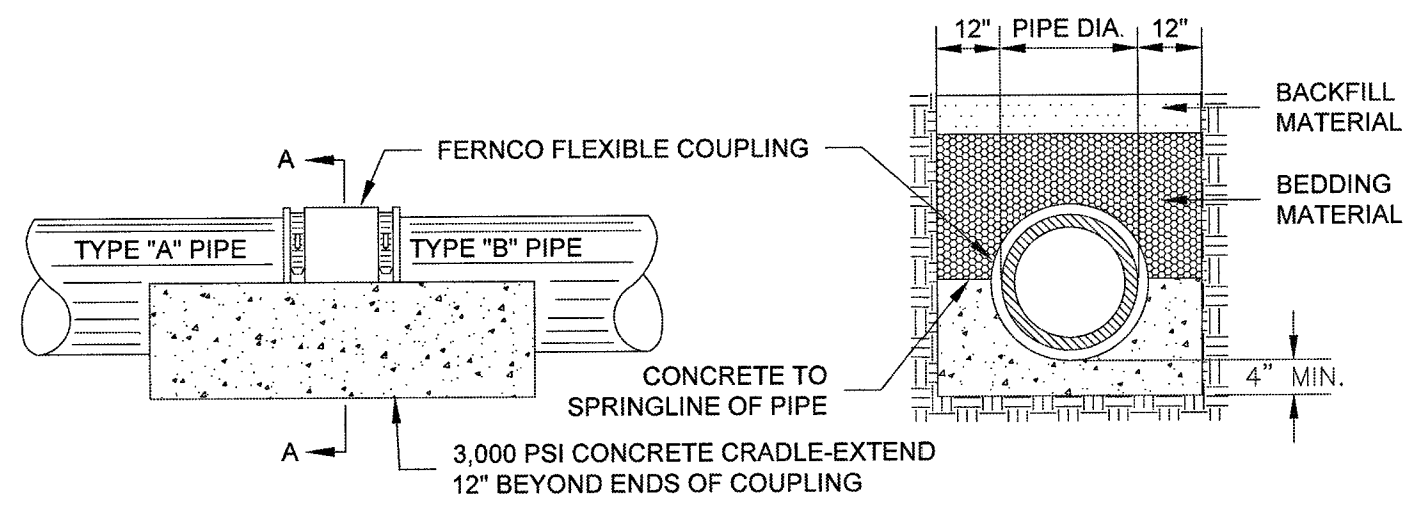
1. TRAFFIC BEARING BOX AND LID REQUIRED IN TRAFFIC AREAS (CAPITOL FOUNDRY VB-9'S)
2. SEWER LATERAL AND CLEANOUT PIPING SHALL BE ASTM D3034 SDR 26. SEWER LATERAL FITTINGS SHALL BE OF SAME SDR RATING AS THE SEWER MAIN. SCHEDULE 40 SOLVENT WELD PIPE AND FITTINGS MAY BE USED FOR THE SEWER LATERAL AND CLEANOUT ASSEMBLY WITH APPROVAL FROM THE PARTICIPATING UTILITY.
3. ALL PIPE SHALL BE OF SAME SIZE.
4. NO BENDS ARE ALLOWED IN THE LATERAL FROM THE MAIN TO THE CLEANOUT STACK WYE. (EXCEPT FOR DEEP SEWER, AS SHOWN BELOW)
5. ALL MAIN LINE TAPS ON ACTIVE MAINS SHALL BE PERFORMED BY PARTICIPATING UTILITY.
6. PIPING ON PRIVATE SIDE OF CLEANOUT TO BE INSTALLED PER GOVERNING JURISDICTION REQUIREMENTS.
7. MINIMUM LATERAL SIZE: 4" FOR RESIDENTIAL SERVICE, 6" FOR NON-RESIDENTIAL SERVICE.
8. SEWER CLEANOUTS SHALL BE SAME SIZE AS SEWER LATERAL.
9. MINIMUM COVER FOR ALL SEWER LATERALS SHALL BE THREE (3) FEET.
10. PROPERTY OWNER RESPONSIBLE FOR INSTALLING CLEANOUT ON PROPERTY LINE (IN ACCORDANCE WITH THIS DETAIL) WHEN MAINTENANCE OCCURS.
11. LOWEST SERVED FINISHED FLOOR ELEVATION SHALL BE A MINIMUM OF THREE FEET (3') ABOVE THE TOP OF THE MAIN AT THE POINT WHERE THE SERVICE LATERAL CONNECTS TO THE MAIN.
12. WHEN CONNECTING TO EXISTING LATERAL USE FERNCO FLEXIBLE COUPLING.



WESTERN VIRGINIA REGIONAL - CONSTRUCTION DETAIL

SANITARY SEWER LATERAL

S-6

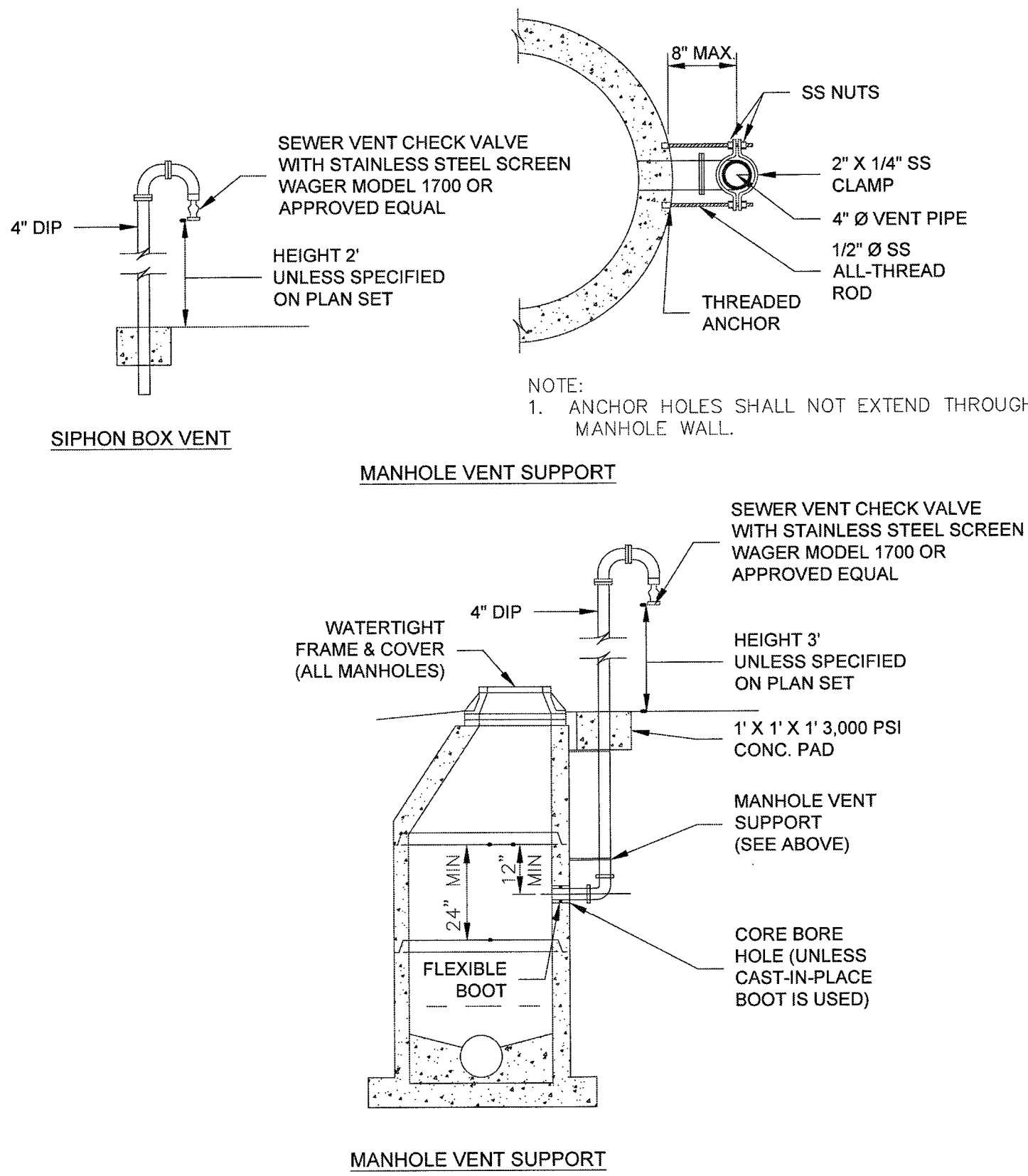


WESTERN VIRGINIA REGIONAL - CONSTRUCTION DETAIL

JOINING DISSIMILAR PIPE
FOR USE WITH EXISTING PIPE

S-11

1. SEE DETAIL S-1.

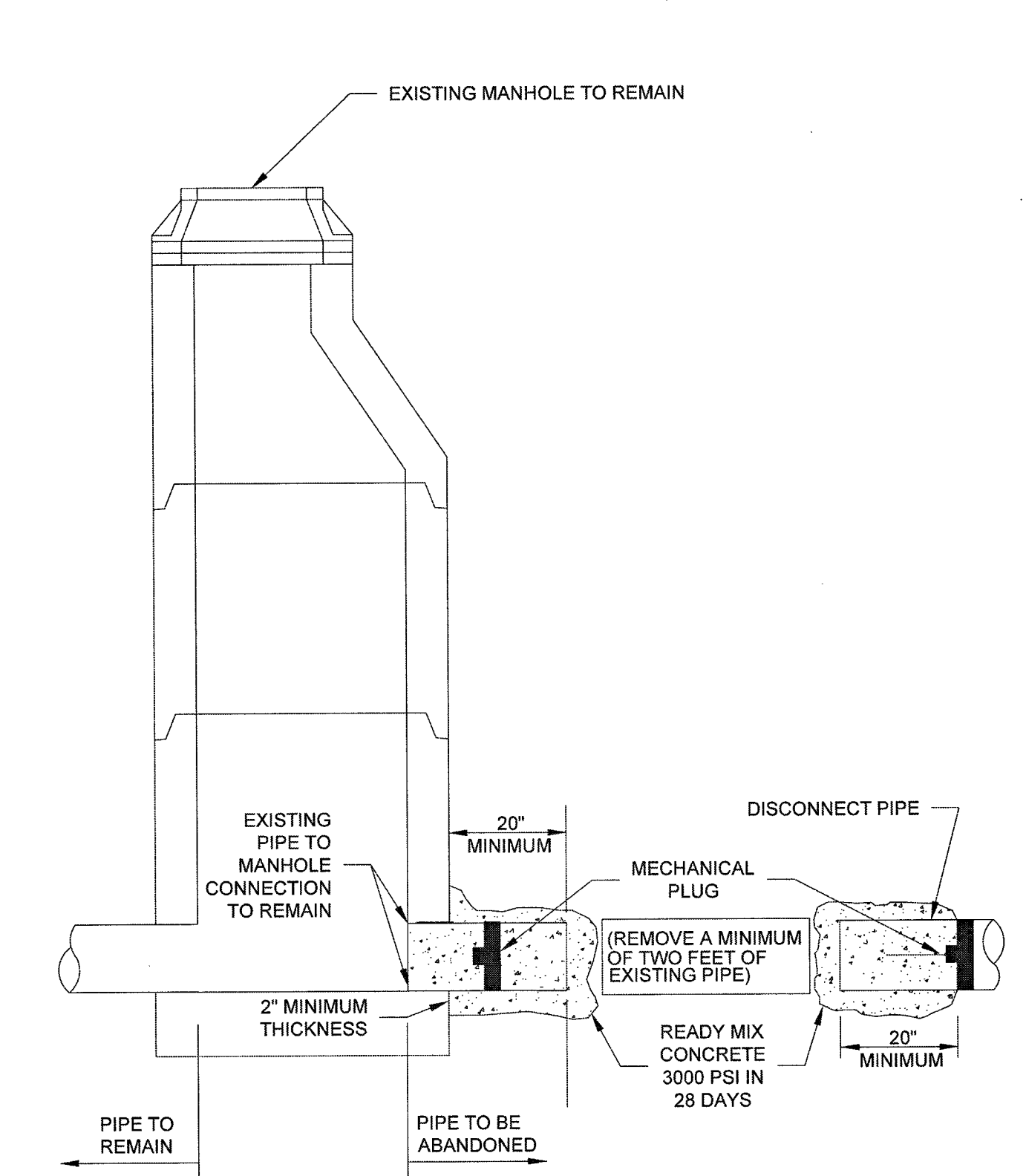


WESTERN VIRGINIA REGIONAL - CONSTRUCTION DETAIL

MANHOLE VENT - ADJACENT

S-12

1. FOR PIPES 18" AND LARGER PROVIDE A MASONRY BULKHEAD IN LIEU OF MECHANICAL PLUGS.

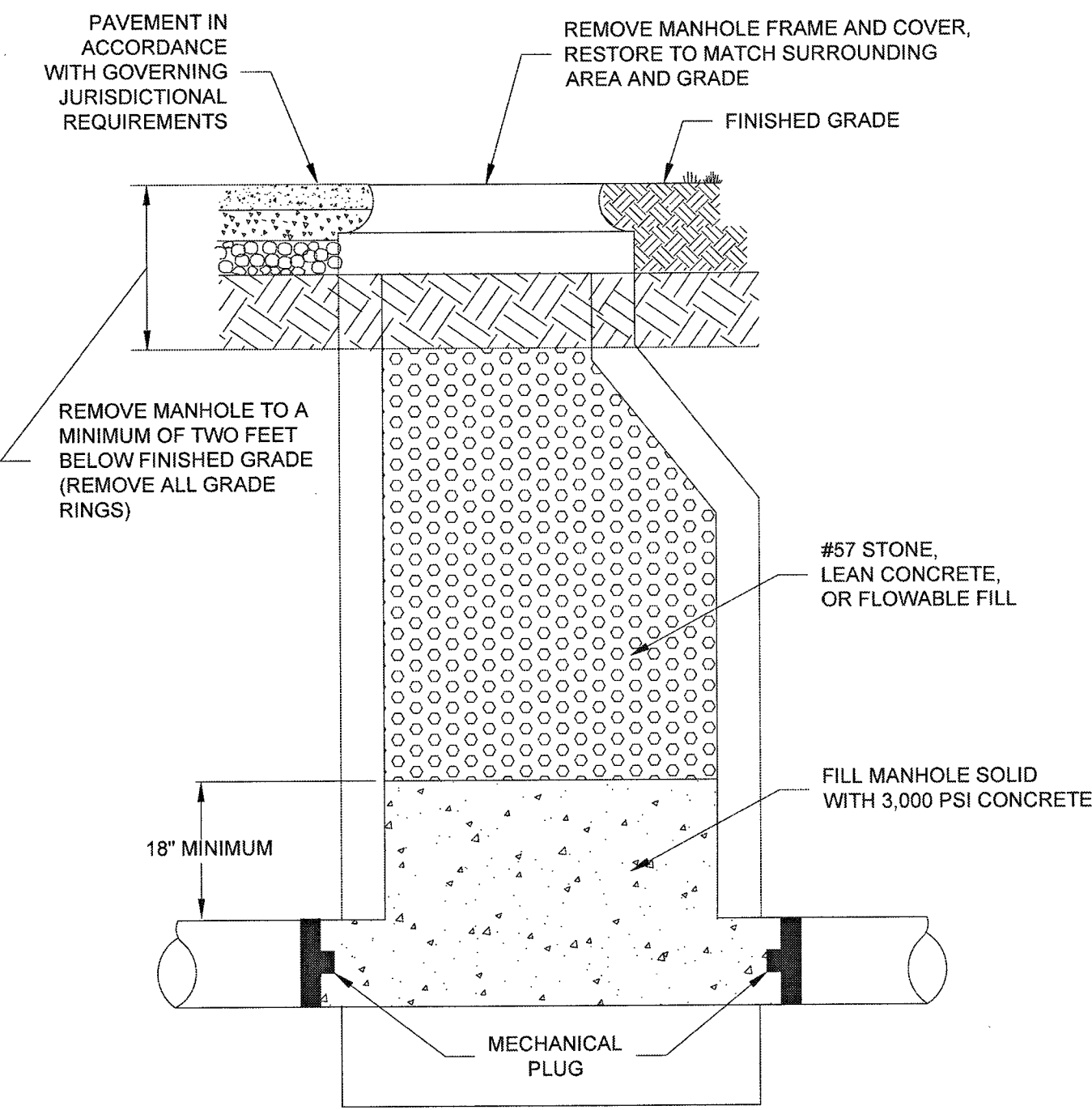


WESTERN VIRGINIA REGIONAL - CONSTRUCTION DETAIL

SANITARY SEWER PIPE
ABANDONMENT AT A MANHOLE

S-15

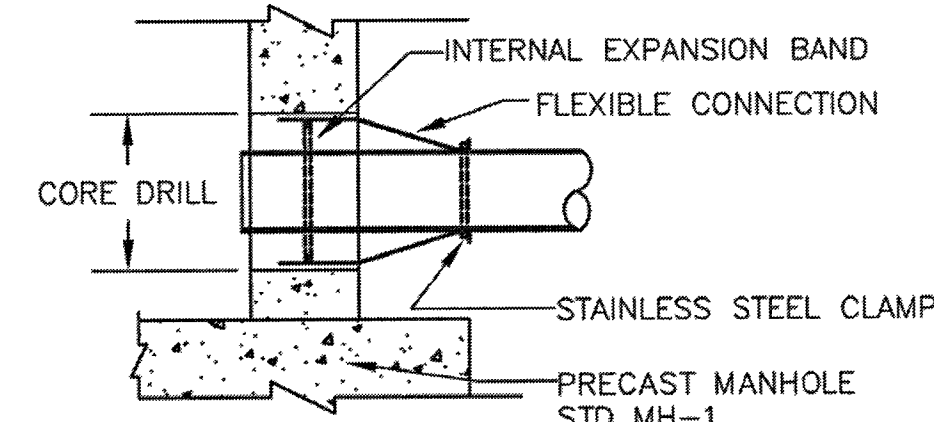
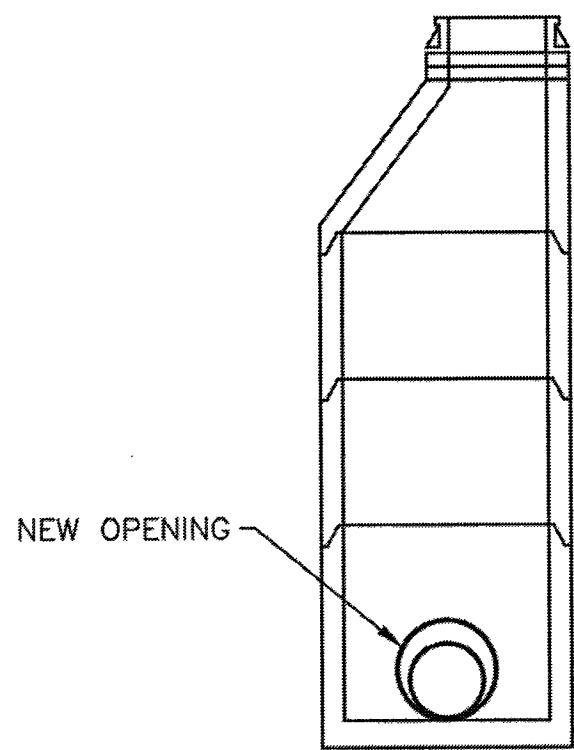
1. FOR PIPES 18" IN DIAMETER AND SMALLER SET MECHANICAL PLUGS INTO ALL PIPES ENTERING MANHOLE.
2. FOR PIPES 18" AND LARGER PROVIDE A MASONRY BULKHEAD IN LIEU OF MECHANICAL PLUGS.
3. DOWNSTREAM PIPE TO BE PLUGGED IN ACCORDANCE WITH PIPE ABANDONMENT DETAIL.



WESTERN VIRGINIA REGIONAL - CONSTRUCTION DETAIL

SANITARY SEWER
MANHOLE ABANDONMENT

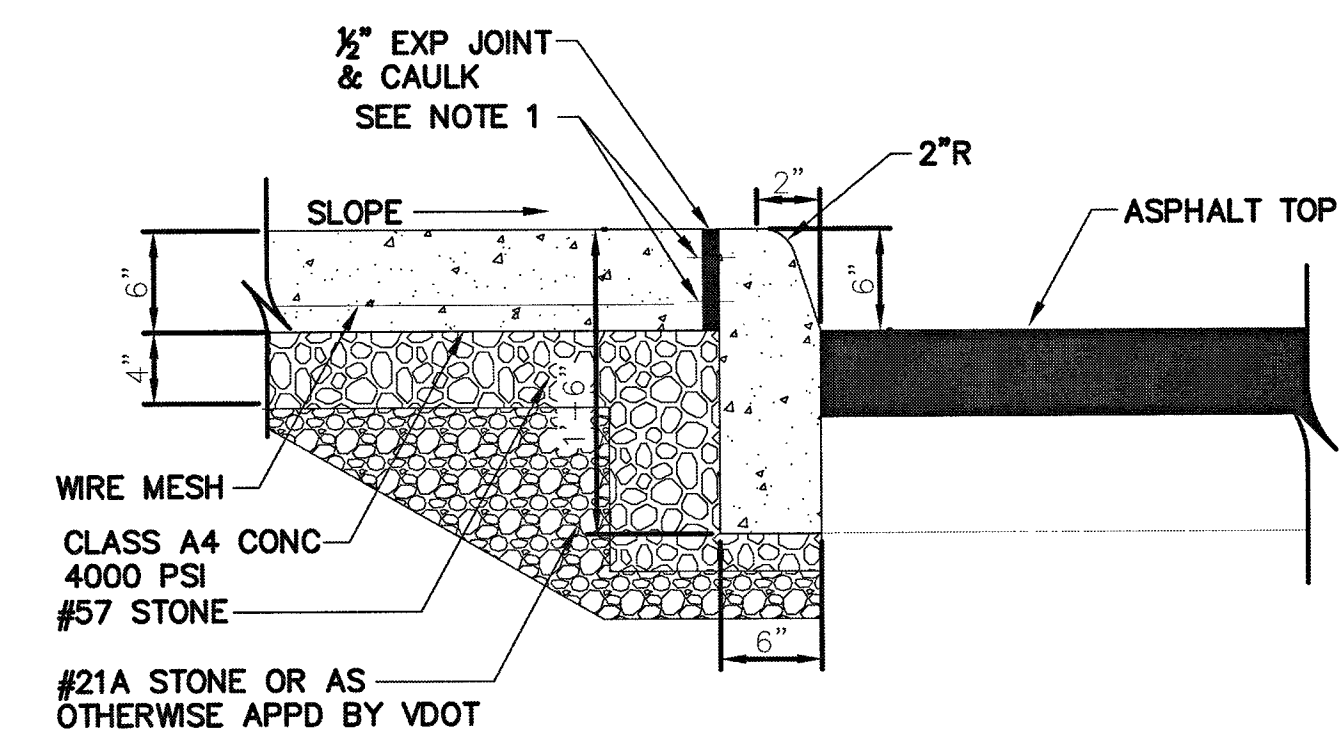
S-16



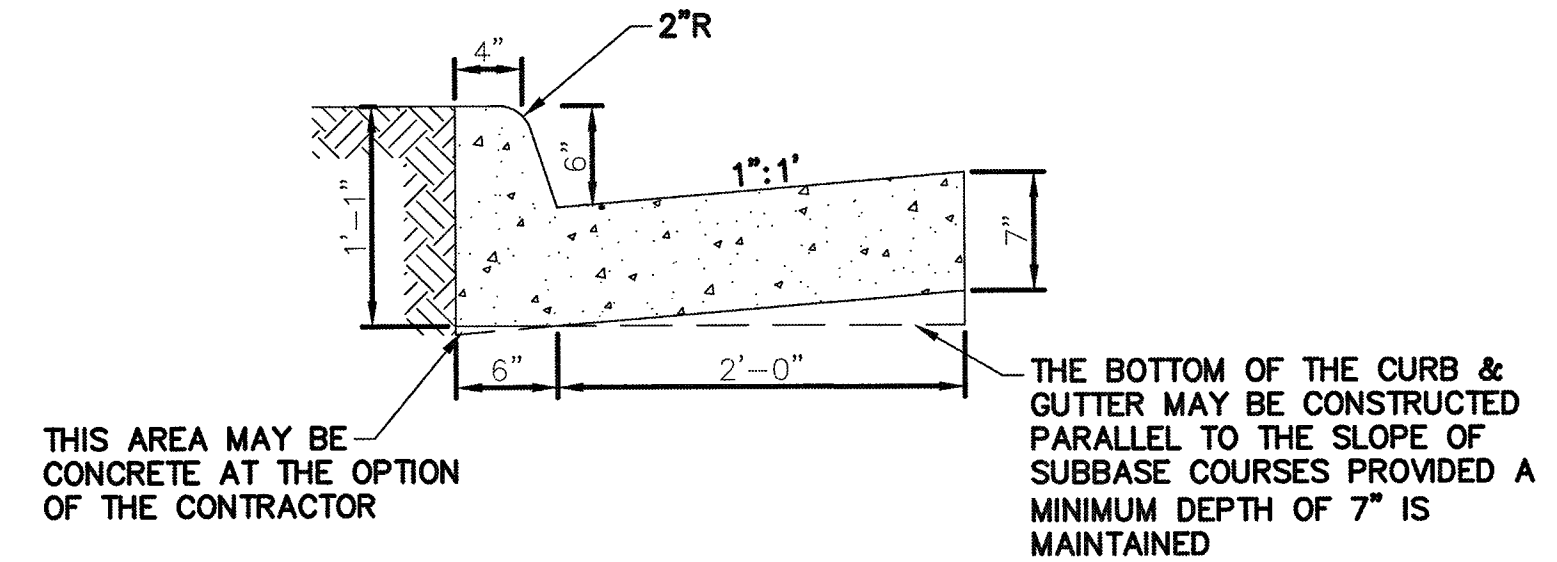
1. CORE DRILL NEW PIPE OPENING.
2. INSERT NEW FLEXIBLE CONNECTOR.
3. PROVIDE RESHAPING OF INVERT IN

EXISTING MANHOLE CONNECTION DETAIL

S-19



1 CONCRETE SIDEWALK & CURB DETAIL
NOT TO SCALE



2 CONCRETE CURB & GUTTER DETAIL
NOT TO SCALE

File: V:\PROJECTS\BVA\31237\CAUD\ACAD\CA4-C502_31237.DWG
Saved: 5/17/2018 11:43:41 AM Plotted: 11/8/2018 4:23:07 PM Current User: Squiltes, Alan LastSavedBy: SS48

NOTE: THESE WESTERN VIRGINIA REGIONAL DESIGN AND CONSTRUCTION STANDARDS AND DETAILS GOVERN THE WORK ON THIS PROJECT. THE CONTRACTOR SHALL BE RESPONSIBLE FOR VERIFYING THAT ALL HIS WORK IS DONE IN ACCORDANCE WITH ALL STANDARDS INCLUDING ANY DETAILS PUBLISHED BY THE AUTHORITY THAT ARE NOT SHOWN.

No.	Submittal / Revision	App'd By	By	Date
1	ADDENDUM 2	DBH	DBH	06/27/18
2	CONSTRUCTION ISSUE		DBH	10/30/18

CIVIL DETAILS

Designed By:	Drawn By:	Checked By:
SCF	RAS	DBH
Issue Date:	Project No:	Scale:
03-01-18	31237	AS NOTED