

DEMOLITION NOTES

DEMOLITION SHALL INCLUDE, UNLESS OTHERWISE NOTED ON DRAWINGS, REMOVAL OF EXISTING OBJECTS OR IMPROVEMENTS, WHETHER INDICATED ON THE DRAWINGS OR NOT, THAT WOULD IN THE OPINION OF THE OWNER, PREVENT OR INTERFERE WITH THE PROGRESS OR COMPLETION OF THE PROPOSED WORK.

PERMITS, FEES AND LICENSES SHALL BE SECURED AND PAID FOR BY THE CONTRACTOR, INCLUDING DISPOSAL CHARGES AS REQUIRED.

WORK SHALL COMPLY WITH THE REQUIREMENTS OF THE GOVERNING AUTHORITIES IN DEMOLITION OF EXISTING PAVEMENT, CURBS AND GUTTERS, DRAINAGE STRUCTURES AND UTILITIES AS MAY BE REQUIRED.

ALL EXISTING UTILITIES TO ANY BUILDINGS SHOWN TO BE RAZED SHALL BE DISCONNECTED AND PLUGGED OR CAPPED AS REQUIRED BY THE CITY.

CONTRACTOR SHALL SAW-CUT ALL JOINTS WHERE EXISTING CURBING, PAVEMENT AND SIDEWALK IS TO BE DEMOLISHED AND NEW CONSTRUCTION JOINS THE EXISTING.

CONTRACTOR SHALL COMPLETELY FILL BELOW GRADE AREAS AND VOIDS FROM DEMOLITION USING APPROVED SELECT FILL MATERIAL.

ALL EXISTING CURBING, CONCRETE, SIDEWALK, ENTRANCES, ASPHALT, BRICK, AND ANY STRUCTURES THAT ARE DEMOLISHED SHALL BE REMOVED FROM THE SITE AND DISPOSED OF BY THE CONTRACTOR. ALL DEBRIS, ETC. SHALL NOT BE USED AS FILL MATERIAL ON THE SITE.

CONTRACTOR SHALL PROVIDE THE FOLLOWINGS PROTECTIONS AT THE JOB SITE:

MAKE ARRANGEMENTS, BEFORE INITIATING DEMOLITION, FOR RELOCATING, DISCONNECTION, REROUTING, ABANDONING, OR SIMILAR ACTION AS MAY BE REQUIRED RELATIVE TO UTILITIES AND OTHER UNDERGROUND PIPING, TO PERMIT WORK TO PROCEED WITHOUT DELAY. ARRANGEMENTS SHALL BE MADE IN ACCORDANCE WITH REGULATIONS OF AUTHORITIES OF UTILITIES MENTIONED, SUCH AS OVERHEAD AND UNDERGROUND POWER AND TELEPHONE LINES AND EQUIPMENT, GAS PIPING, STORM SEWERS, SANITARY SEWERS, OR WATER PIPING. CONTRACTOR SHALL NOT USE WATER WHEN IT MAY CREATE HAZARDOUS OR OBJECTIONABLE CONDITIONS, SUCH AS ICE, FLOODING AND/OR POLLUTION.

ENSURE SAFE PASSAGE OF PERSONS AROUND ALL AREAS OF DEMOLITION.

CONDUCT OPERATIONS TO PREVENT DAMAGE TO ADJACENT BUILDINGS, STRUCTURES, OTHER FACILITIES, OR INJURY TO PERSONS.

PROMPTLY REPAIR DAMAGES CAUSED TO ADJACENT FACILITIES BY DEMOLITION OPERATIONS AT NO COST TO THE OWNER.

MAINTAIN EXISTING UTILITIES INDICATED TO REMAIN. KEEP IN SERVICE, AND PROTECT AGAINST DAMAGE DURING DEMOLITION OPERATIONS. PREVENT INTERRUPTION OF EXISTING UTILITIES SERVING OCCUPIED OR USED FACILITIES, EXCEPT WHEN AUTHORIZED IN WRITING BY AUTHORITIES HAVING JURISDICTION. PROVIDE TEMPORARY SERVICES DURING INTERRUPTIONS TO EXISTING UTILITIES AS ACCEPTABLE TO GOVERNING AUTHORITIES.

USE WATER SPRINKLING AND OTHER SUITABLE METHODS TO LIMIT DUST AND DIRT RISING AND SCATTERING IN AIR TO LOWEST PRACTICAL LEVEL.

COMPLY WITH GOVERNING REGULATIONS PERTAINING TO ENVIRONMENTAL PROTECTION.

EXISTING SANITARY SEWER SCHEDULE:

ex. S.S. MH RIM=916.55' CL INV= 909.20'	ex. S.S. MH RIM=916.46' INV WEST: 909.11 INV NORTH: 906.53 INV EAST: 904.73
ex. S.S. MH RIM=916.53' INV OUT= 911.78'	ex. S.S. MH RIM=916.34' INV WEST: 909.38 INV SOUTH: 906.79 INV EAST: 909.40
ex. S.S. MH RIM=916.39' 15" INV IN= 904.54' 30" INV IN= 904.69' 30" INV OUT= 904.44'	ex. S.S. MH RIM=918.26' CL INV: 912.06
ex. S.S. MH RIM=918.27' 30" INV IN= 910.02' 30" INV OUT= 909.77'	ex. S.S. MH RIM=924.08' CL INV: 912.10
ex. S.S. MH RIM=918.76' 30" INV IN= 909.66' 30" INV OUT= 909.46'	ex. S.S. MH RIM=916.66' CL INV: 903.86
ex. S.S. MH RIM=918.49' 30" INV IN= 909.40' 30" INV OUT= 909.38'	

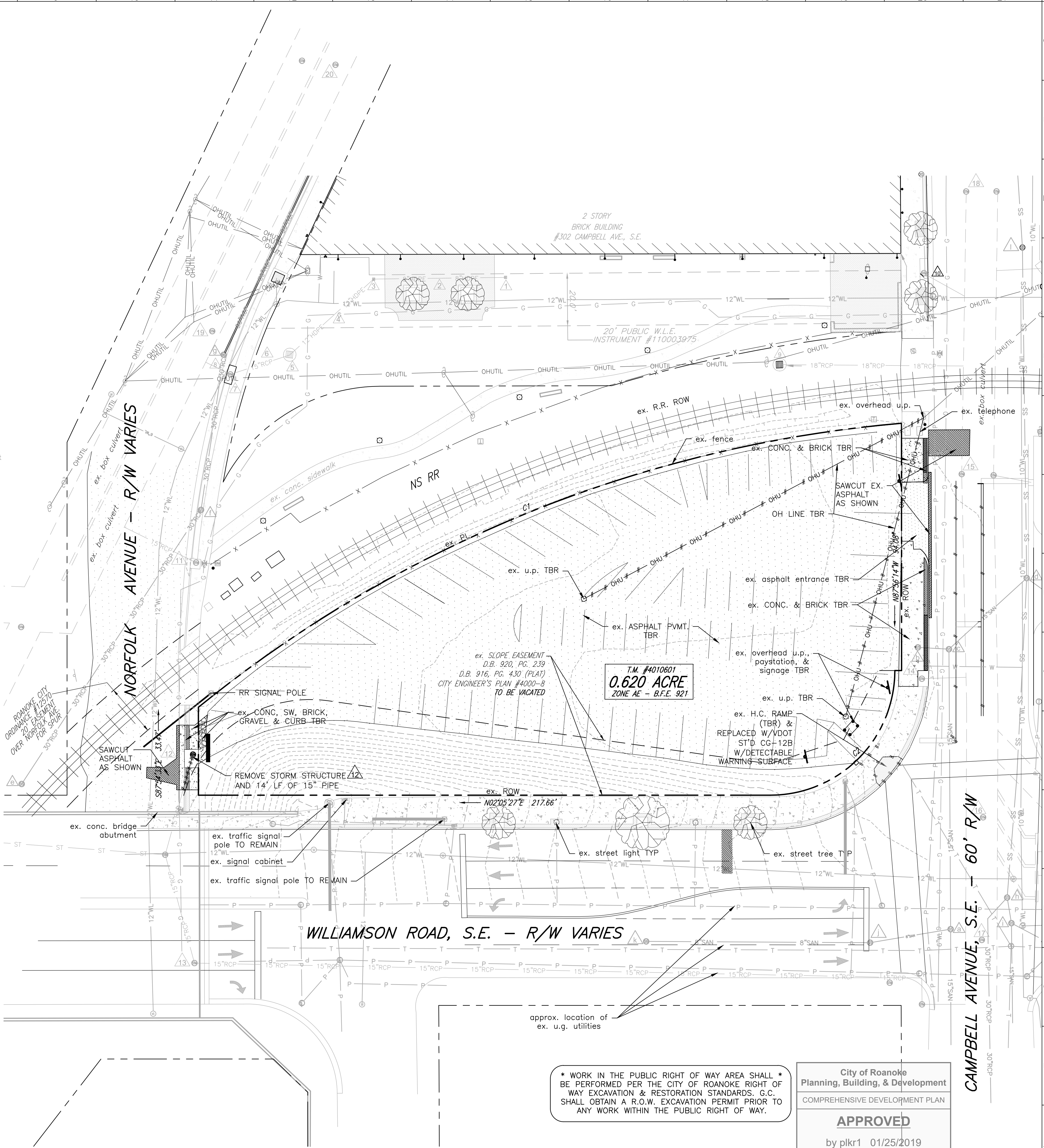
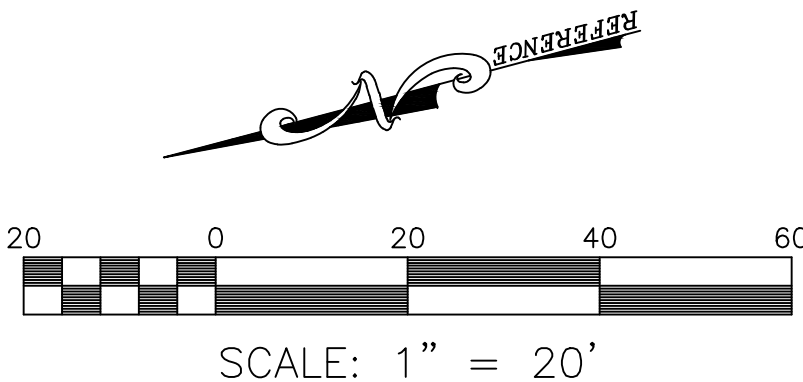
EXISTING STORM SEWER SCHEDULE:

ex. nyloplast inlet w/12" grate TOP=917.11' INV OUT=915.1'	ex. curb inlet (4" THROAT) RIM=918.61' CENTER INV= 915.46'
ex. 50 LF OF 8" HDPE PIPE AT 2.7%	ex. storm mh RIM=918.95' CENTER INV= 914.75'
ex. nyloplast inlet w/12" grate TOP=917.03' INV IN=913.75' INV OUT=913.70'	ex. storm mh RIM=919.92' INV IN= 916.02' INV OUT= 915.77'
ex. 43 LF OF 12" HDPE HDPE PIPE AT 2.42%	ex. curb inlet (6" throat) RIM=916.72' INV OUT= 914.62'
ex. vdot st'd di-3c (6" throat) TOP=918.19' INV IN=912.66' INV OUT=912.80'	ex. storm mh RIM=917.11' INV= 908.01'
ex. 24 LF OF 15" RCP PIPE AT 2.12%	ex. storm mh RIM=916.53' INV= 906.38'
ex. vdot st'd di-3c (6" throat) TOP=918.19' INV IN=912.29' INV OUT=912.21'	ex. storm mh RIM=918.50' INV= 906.50'
ex. ±8 LF OF 15" RCP INTO BOX CULVERT	ex. storm mh RIM=917.38' INV= 907.76'
ex. converted di-3b top to di-1 top TOP=915.20' CENTER INV= 910.94'	ex. storm mh RIM=918.65' INV= 907.55'
ex. converted drop inlet top to vdot st'd di-3c (10" throat) TOP=916.67' CENTER INV= 912.68'	ex. storm mh RIM=918.05' INV= 906.13'

LEGEND:

- EX. PAVEMENT TO BE SAWCUT
- EX. PAVEMENT (TO BE REMOVED)
- EX. CONC. (TO BE REMOVED)

CURVE	RADIUS	ARC LENGTH	CHORD BEARING	CHORD LENGTH	DELTA ANGLE	TANGENT
C1	491.38'	232.92'	S19°53'44"E	288.60'	34°09'17"	150.96'
C2	47.42'	74.50'	N42°55'23"W	67.07'	90°00'49"	47.43'



* WORK IN THE PUBLIC RIGHT OF WAY AREA SHALL *
BE PERFORMED PER THE CITY OF ROANOKE RIGHT OF
WAY EXCAVATION & RESTORATION STANDARDS. G.C.
SHALL OBTAIN A R.O.W. EXCAVATION PERMIT PRIOR TO
ANY WORK WITHIN THE PUBLIC RIGHT OF WAY.

City of Roanoke
Planning, Building, & Development
COMPREHENSIVE DEVELOPMENT PLAN
APPROVED
by plkr1 01/25/2019

BALZER
AND ASSOCIATES INC.
REFLECTING TOMORROW
www.balzer.cc

Roanoke
New River Valley
Richmond
Staunton
Harrisonburg

RESIDENTIAL LAND DEVELOPMENT ENGINEERING
SITE DEVELOPMENT ENGINEERING
LAND USE PLANNING & ZONING
LANDSCAPE ARCHITECTURE
LAND SURVEYING
ARCHITECTURE
STRUCTURAL ENGINEERING
TRANSPORTATION ENGINEERING
ENVIRONMENTAL & SOIL SCIENCE
WETLAND DELINEATIONS & STREAM EVALUATIONS

Balzer and Associates, Inc.
1208 Corporate Circle
Roanoke, VA 24018
540-772-9580
FAX 540-772-8050

COMMONWEALTH OF VIRGINIA
Christopher P. Burns
Lic. No. 047338
12/16/18
PROFESSIONAL ENGINEER

PINNACLE BANK CORPORATE
202 CAMPBELL AVE SOUTHEAST
EX. CONDITIONS & DEMO PLAN

CITY OF ROANOKE, VIRGINIA

DRAWN BY CLL
DESIGNED BY BTC
CHECKED BY BTC
DATE 10/24/2018
SCALE 1"=20'

REVISIONS:
11/16/2018
12/16/2018

SHEET NO.
C2
JOB NO. 03180055.00