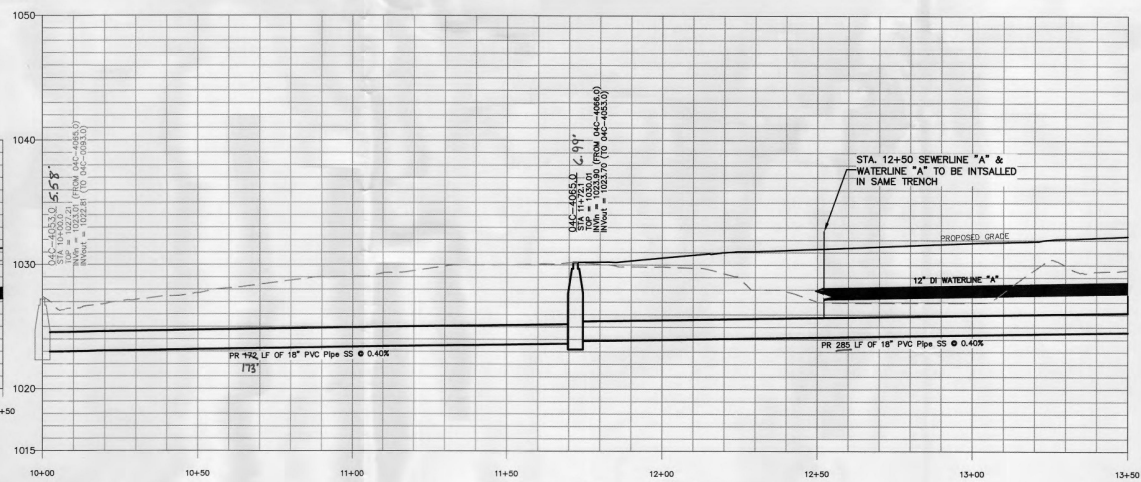
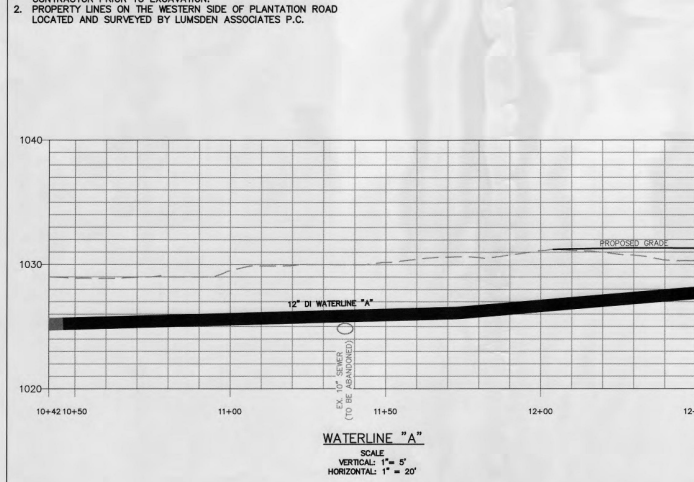


- SURVEY NOTES:**
1. ALL SURVEY FOR THIS PROJECT WAS CONDUCTED USING A COMBINATION OF TOTAL STATION AND RTK GPS EQUIPMENT. THE DATUMS USED FOR THE SURVEY ARE NAD83 & NAVD88. THE COORDINATE SYSTEM USED FOR THE SURVEY IS VIRGINIA STATE PLANE, SOUTH ZONE, US FOOT.
 2. CONTOUR DATA ON THIS PLAN IS GENERALLY ACCURATE TO WITHIN $\pm 0.5'$ WHERE CONTOUR DATA IS PROVIDED.
 3. THIS PLAN WAS PREPARED WITHOUT THE BENEFIT OF A CURRENT TITLE REPORT AND THEREFORE, THERE MAY EXIST ENCUMBRANCES NOT SHOWN HEREON.
 4. WITH OCCASIONAL EXCEPTION, EDGE OF PAVEMENT, GRAVEL, CONCRETE, & BRICK ARE SHOWN BASED ON GEOREFERENCED AERIAL IMAGERY AND ARE TYPICALLY ACCURATE TO WITHIN 1.0'.
 5. WITH OCCASIONAL EXCEPTION, EXISTING BUILDINGS SHOWN ARE BASED ON MUNICIPAL GIS DATA AND GEOREFERENCED AERIAL IMAGERY AND ARE TYPICALLY ACCURATE TO WITHIN 5.0'.
 6. THIS PLAN DOES NOT GUARANTEE THE EXISTENCE, LOCATION, SIZE, MATERIAL OR TYPE OF ANY UNDERGROUND UTILITIES. ALL UNDERGROUND UTILITIES & STRUCTURES SHOWN ON THIS PLAN ARE SHOWN BASED ON SURVEYED ABOVE GROUND STRUCTURES, CCTV SURVEYS, AVAILABLE PUBLIC RECORDS AND BY UTILITY LINE LOCATION MARKINGS ESTABLISHED BY MISS UTILITY OF VIRGINIA TICKET # A822901297. ALL UNDERGROUND UTILITY & STRUCTURE LOCATION SHOULD BE FIELD VERIFIED PRIOR TO THE START OF ANY CONSTRUCTION.



- GENERAL NOTES:**
1. SEWER LATERALS SHOWN ARE BASED ON CCTV FOOTAGE. ADDITIONAL LATERALS & CONFLICTS SHALL BE INVESTIGATED BY CONTRACTOR PRIOR TO EXCAVATION.
 2. PROPERTY LINES ON THE WESTERN SIDE OF PLANTATION ROAD LOCATED AND SURVEYED BY LUMSDEN ASSOCIATES P.C.



SEWERLINE "A" & WATERLINE "A"

SCALE
VERTICAL: 1" = 5'
HORIZONTAL: 1" = 20'

WESTERN VIRGINIA

WATER AUTHORITY

ENGINEERING SERVICES

601 S JEFFERSON ST, SUITE 300

ROANOKE, VA 24011

540-853-5700

PLANTATION ROAD SEWER REPLACEMENT

PLAN & PROFILE

Rev	Description	Date	By

Designed: NSS, DRJ

Drawn: AJC

Checked: DRJ, JWR

Approved: JWR

Date: DEC 2019

Project: SCIP

2

Sheet 2 of 7